



RAYVENTORY[®]

The most comprehensive
Solution for Discovery and
Inventory of Software
and Hardware

Release Notes RayVentry
Data Hub 12.2



**Copyright © Raynet GmbH (Germany, Paderborn HRB 3524). All rights reserved.
Complete or partial reproduction, adaptation, or translation without prior written permission is prohibited.**

Release Notes RayVentory Data Hub RayVentory Data Hub 12.2

Raynet and RayFlow are trademarks or registered trademarks of Raynet GmbH protected by patents in European Union, USA and Australia, other patents pending. Other company names and product names are trademarks of their respective owners and are used to their credit.

The content of this document is furnished for informational use only, is subject to change without notice, and should not be construed as a commitment by Raynet GmbH. Raynet GmbH assumes no responsibility or liability for any errors or inaccuracies that may appear in this document. All names and data used in examples are fictitious unless otherwise noted.

Any type of software or data file can be packaged for software management using packaging tools from Raynet or those publicly purchasable in the market. The resulting package is referred to as a Raynet package. Copyright for any third party software and/or data described in a Raynet package remains the property of the relevant software vendor and/or developer. Raynet GmbH does not accept any liability arising from the distribution and/or use of third party software and/or data described in Raynet packages. Please refer to your Raynet license agreement for complete warranty and liability information.

Raynet GmbH Germany
See our website for locations.

www.raynet.de

Contents

Introduction	4
What's new	5
Migration from previous versions	12
System Requirements	13
Hardware Requirements	13
Software Requirements	13
Additional Information	15

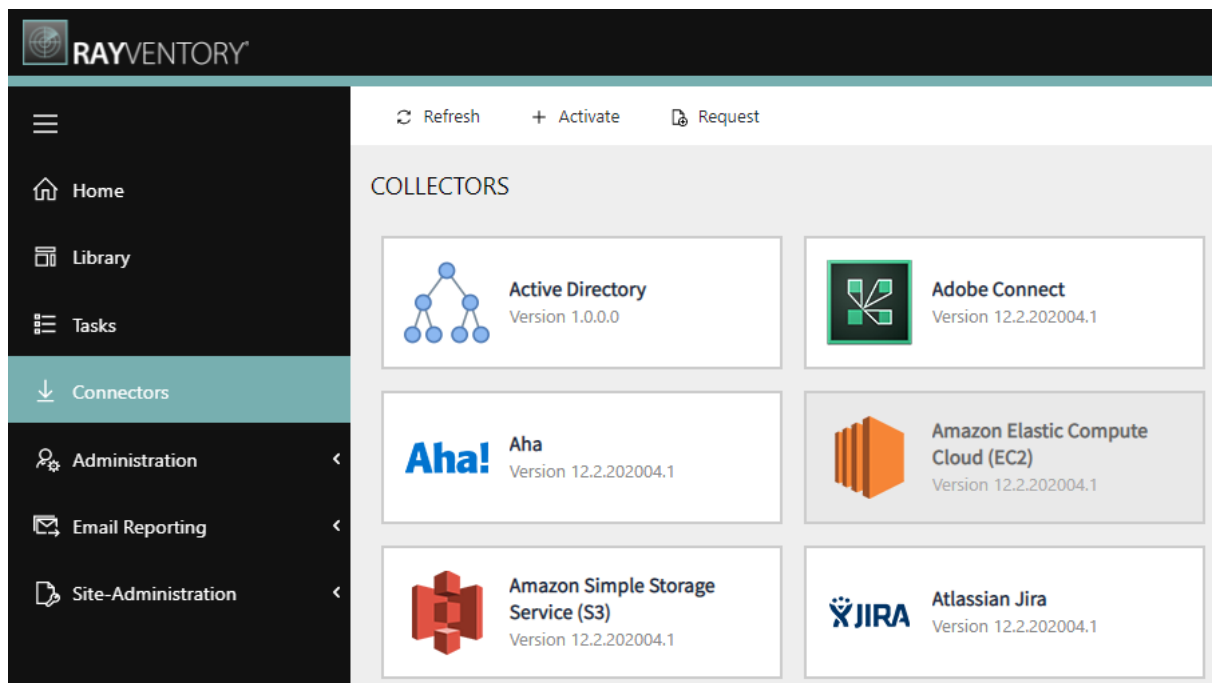
Introduction

This new release 12.2 is a major upgrade to the previous release 12.1. It contains several new features, major product improvements and resolved issues.

What's new

Connector management and licensing

It is now possible to see all connectors in a single overview.



Collectors can be shown and hidden, which affects which tasks are available. Also, the licensing model is now much more flexible, as it is possible to license individual collectors, whereas in the previous release it was only possible for the whole bundle.

New connectors

This version brings several new connectors: Microsoft Dynamics CRM, Microsoft Azure AD, RedHat Virtualization, Slack and RayManageSoft Unified Endpoint Manager.



Unified jobs and tasks

Another place where we simplified the usage pattern was the elimination of the "job" entity. In previous versions, jobs were merely a bridge between connectors and tasks, but this turned out to be causing a big learning curve. Instead, this version has just a single entity called a task, which is a single point of configuration for connectivity, functional and technical parameters.

Add Task ✕

General Configuration Connection Agent Settings Schedule

Authentication

TENANT *
The directory tenant that you want to request permission from. This can be in GUID or friendly name format.

⚡

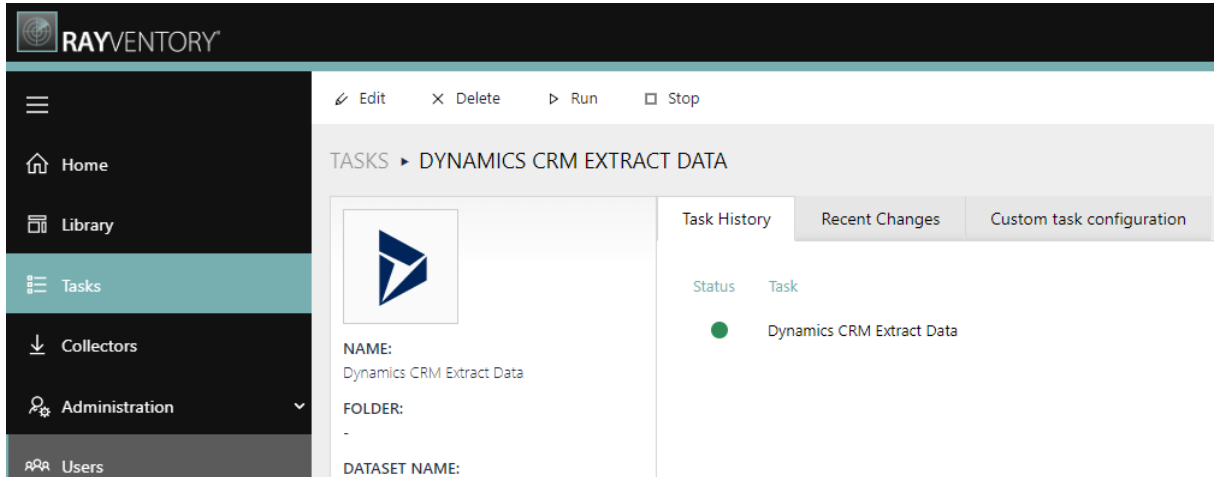
CLIENT ID *
The Application ID that the Azure app registration portal assigned when you registered your app.

⚡

Also, task configuration uses a new term for "table names" which are now called "data sets". This reflects their true dual-purpose, which can be a single table or a namespace for collection of tables

Improved UI

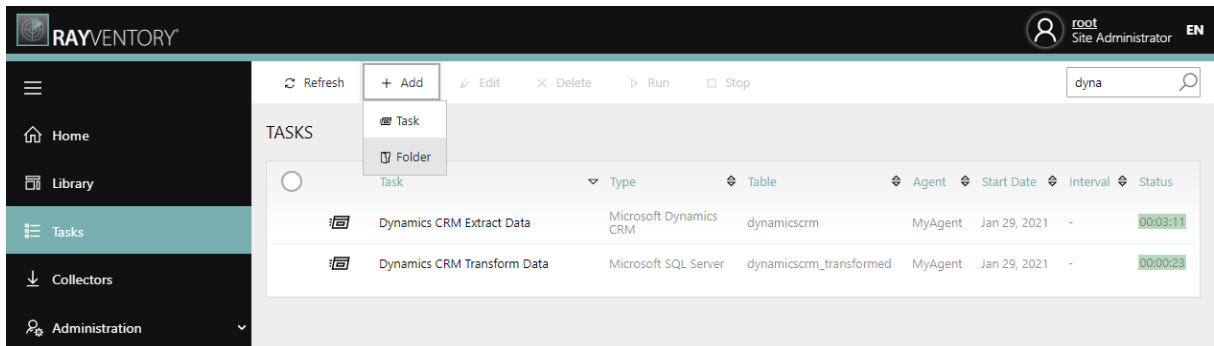
We improved the UI to better use the screen estate and making it easier to navigate around. This affects general layout, design, animations but also some subtle changes like added icons, hidden advanced content and more focus on the important things straight away in every view.



Especially the report designer should benefit from it, as we moved things around and freed some vertical space to be used by the actual report canvas.

Folders for tasks

It is now possible to group tasks (former task and jobs) in folders of unlimited nesting.



Adding reports from the Wizard

There is now even easier way of importing reports, both on initial run but also subsequently as they are needed. A new wizard-driven editor shows which templates are available, what requirements they have, and it makes sure that all things are in place after finishing the import. It is also integrated with the new Variables module, meaning that all sensitive information like credentials or connection strings are abstracted away and automatically added to the Variable store.

Import ×

1 Templates
✓ Parameters
3 Automation
4 Summary
5 Finish

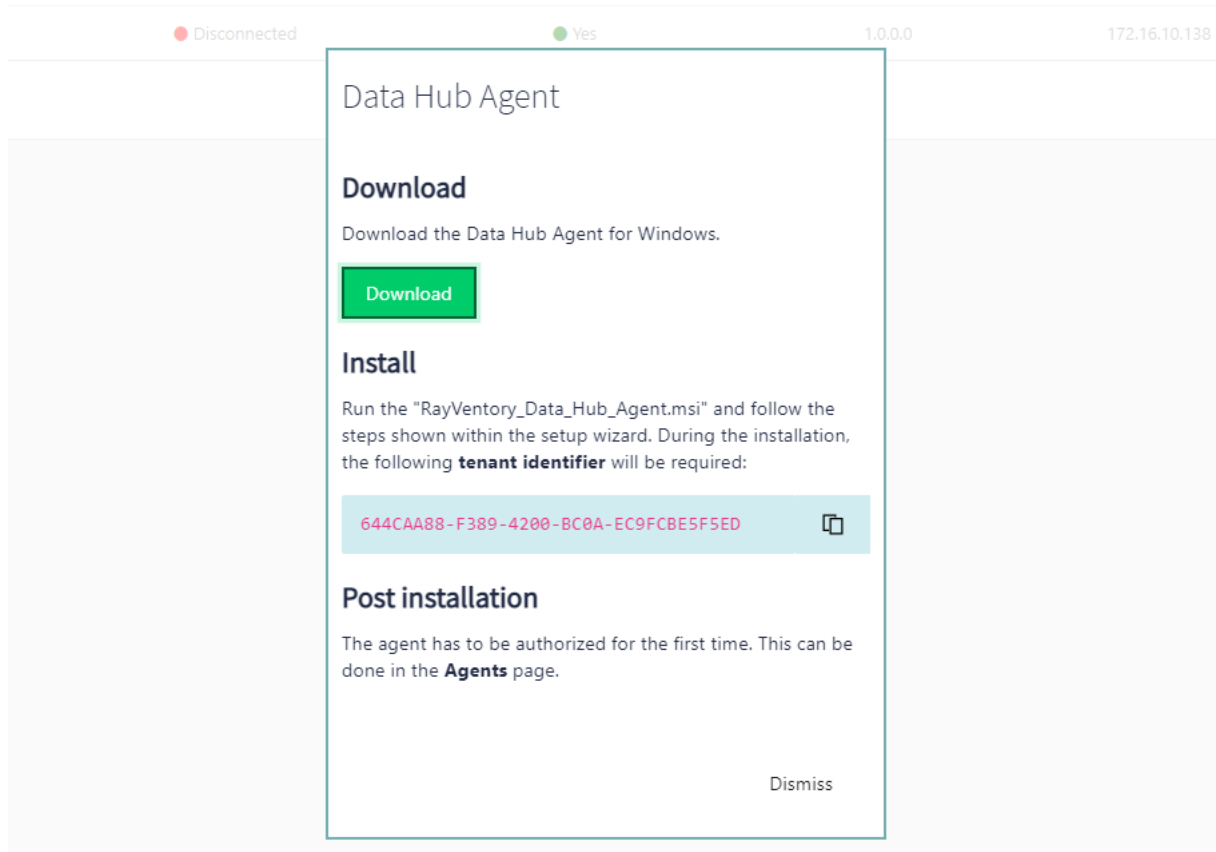
Select one or more objects to import

<input type="checkbox"/>	Name	Type
<input checked="" type="checkbox"/>	Technology Asset Inventory	Dashboard
<input type="checkbox"/>	Cloud Inventory ▼	Section
<input checked="" type="checkbox"/>	Dynamics CRM	Dashboard
<input type="checkbox"/>	Jira User Optimization	Dashboard
<input type="checkbox"/>	Office 365	Dashboard
<input type="checkbox"/>	Connectors ▼	Section
<input type="checkbox"/>	Inventory Data Overview	Dashboard
<input type="checkbox"/>	SCCM Connector	Dashboard

Next

Easier setup of Data Hub agents

We removed the Downloads page, and introduced instead a simple way of downloading the agent. It requires fewer clicks, and provides the most important information right there where it is needed.



Improved installer makes sure that the settings from all previous versions are transferred.

Automated e-mail notifications

It is now possible to send automatic, schedule-driven e-mail notifications, containing the most up-to-date versions of selected reports.

Add Email Template ✕

EMAIL TEMPLATE *

Template Content *

↶ ↷
Size ▼
Font ▼
B *I*

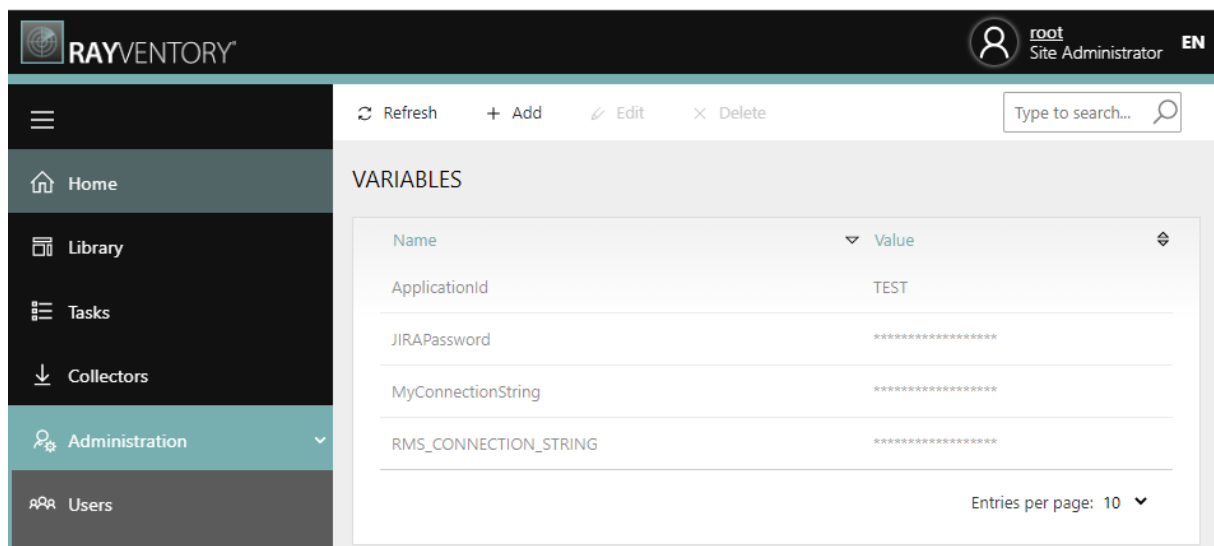
§ U
☰ ☰ ☰ ☰
☰ ☰
Normal text ▼

A^o

” ”

Variables and placeholders for tasks

It is possible to use variables in tasks. The syntax for them is `###VariableName###` where `VariableName` is the name as defined in the new variable store. Variables can be protected (password-like) or open-text and can be used for all task-related parameters (typical use case: connection strings, passwords, usernames, client secrets etc.).



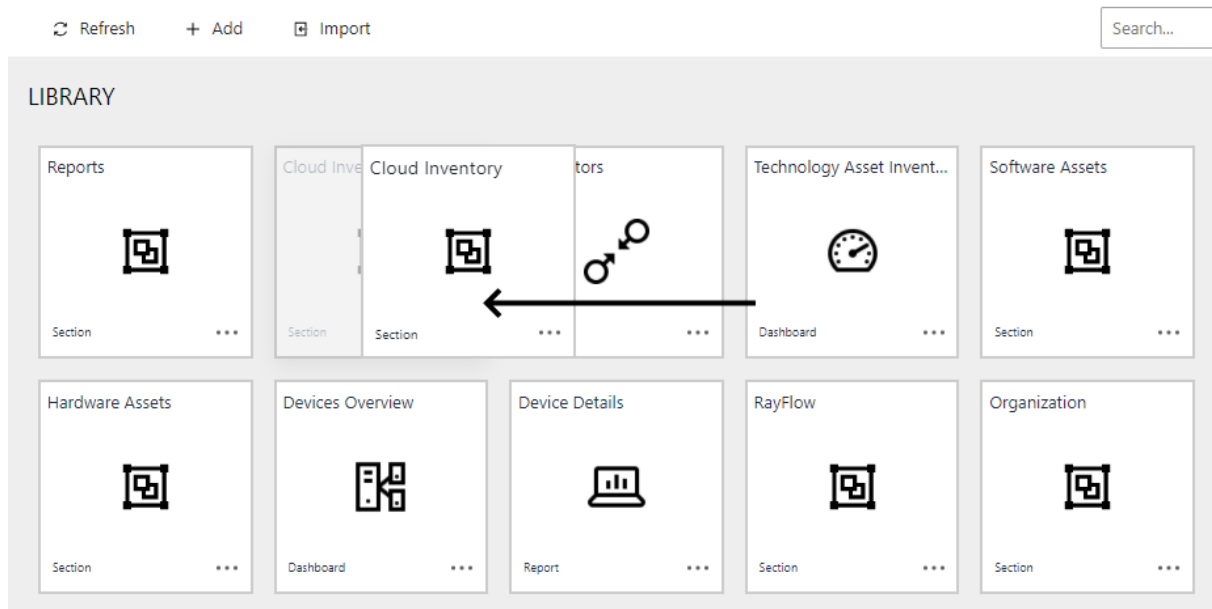
The screenshot shows the RAYVENTORY Administration interface. The top navigation bar includes the RAYVENTORY logo, the user 'root Site Administrator', and the language 'EN'. The left sidebar contains navigation items: Home, Library, Tasks, Collectors, Administration (selected), and Users. The main content area is titled 'VARIABLES' and features a table with columns 'Name' and 'Value'. The table contains the following entries:

Name	Value
ApplicationId	TEST
JIRAPassword	*****
MyConnectionString	*****
RMS_CONNECTION_STRING	*****

At the bottom right of the table, there is a control for 'Entries per page: 10' with a dropdown arrow.

Drag-and-drop reordering in library

The items in library can be now reordered using a drag and drop technique.



Other changes

This version contains several other improvements, performance optimizations and fixes for reported issues.

- Better performance of complex reports and data collection
- Many UI-related improvements
- Adjusted default reports
- Optimized bundle size
- Translation fixes
- Changed terminology: what used to be called a "collector" or "Data Collector" in version 12.1, has been renamed to an "agent" / "Data Hub Agent" in version 12.2. This change also affects the name of the Windows Installer files.

Migration from previous versions

This version is not backward compatible with previous releases 12.0 and 12.1.

- There is no automated migration path from version 12.0
- For version 12.1, there is automated migration, which ensures that both the server and the agent can be migrated, together with user data

For detailed information about the migration process, refer to the **Installation Guide**.

Breaking changes

- The entities **Jobs** and **Downloads** have been removed from this build. REST API relying on their presence may break
- There is a new naming convention for tables saved in the database. Old reports rerun with updated tasks may refer to the old tables, and require manual adjustments
 - There is a coercion mechanism for users of REST API which ensures this happen automatically once preconditions are met
- The server should be always installed with the matching version of the agent. Mixing versions (for example 12.2 Data Hub and 12.1 Data Hub Agent) is not recommended and may lead to unexpected issues

System Requirements

Hardware Requirements

Data Hub

Requirements when SQL Server and RayVentory Data Hub are installed on the same machine:

- Min. 4 CPU cores
- Min. 8 GB of RAM
- Min. 20 GB of disk space

Requirements when only RayVentory Data Hub is installed on the machine:

- Min. 4 CPU cores
- Min. 4 GB of RAM
- Min. 10 GB of disk space

Data Hub Agent

- CPU: Intel Core i5
- RAM: 4GB
- Disk space: 500 MB

Software Requirements

The following are the minimum software requirements for the installation and running of RayVentory Data Hub Server:

- Microsoft Windows Server 2012 R2 or higher

- IIS 8 or higher
- Microsoft .NET Core 3.1 – Windows Server Hosting Bundle (<https://dotnet.microsoft.com/download/dotnet-core/3.1>)
- Microsoft SQL Server 2016 or SQL Server Express 2016

**Note:**

In order to run hosting bundles, the “Universal C Runtime” is required. Modern Windows Servers should already have it, but it may be required to download for older ones. The oldest supported OS is currently Windows Server 2012 R2. More information can be found here: <https://support.microsoft.com/en-us/help/2999226/update-for-universal-cruntime-in-windows>

The following are the minimum software requirements for the installation and running of RayVentory Data Hub Data Hub Agent:

- Windows Vista SP2 / Windows Server 2008 R2 or newer
- .NET Core 3.1 Runtime (<https://dotnet.microsoft.com/download/dotnet-core/3.1>)
- Java / OpenJDK version 8 or newer is required to execute data collection from SaaS platforms

Supported web browsers

- Microsoft Internet Explorer version 9.0 and newer
- Microsoft Edge version 80 and newer
- Mozilla Firefox version 74 and newer
- Google Chrome version 80 and newer

Additional Information

Visit www.raynet.de for further information on RayVentory Data Hub, and take a look at the additional resources available at the Knowledge Base: <http://raynetgmbh.zendesk.com/>.

Raynet is looking forward to receiving your feedback from your RayVentory Data Hub experience. Please contact your Raynet service partner or use our [Support Panel](#) to add your ideas or requirements to the RayVentory Data Hub development roadmap!



Raynet GmbH

Technologiepark 20
33100 Paderborn, Germany
T +49 5251 54009-0
F +49 5251 54009-29
info@raynet.de
support@raynet.de

www.raynet.de