



RAYFLOW[®]

Workflow Management

Release Notes RayFlow
6.5

RayFlow is part of RaySuite.

•rayNET

**Copyright © Raynet GmbH (Germany, Paderborn HRB 3524). All rights reserved.
Complete or partial reproduction, adaptation, or translation without prior written permission is prohibited.**

Release Notes RayFlow RayFlow 6.5

Raynet and RayFlow are trademarks or registered trademarks of Raynet GmbH protected by patents in European Union, USA and Australia, other patents pending. Other company names and product names are trademarks of their respective owners and are used to their credit.

The content of this document is furnished for informational use only, is subject to change without notice, and should not be construed as a commitment by Raynet GmbH. Raynet GmbH assumes no responsibility or liability for any errors or inaccuracies that may appear in this document. All names and data used in examples are fictitious unless otherwise noted.

Any type of software or data file can be packaged for software management using packaging tools from Raynet or those publicly purchasable in the market. The resulting package is referred to as a Raynet package. Copyright for any third party software and/or data described in a Raynet package remains the property of the relevant software vendor and/or developer. Raynet GmbH does not accept any liability arising from the distribution and/or use of third party software and/or data described in Raynet packages. Please refer to your Raynet license agreement for complete warranty and liability information.

Raynet GmbH Germany
See our website for locations.

www.raynet.de

Contents

Introduction	4
What's New?	5
Resolved Issues	9
Migration	11
RayFlow Server	11
RayFlow Client	17
System Requirements	18
RayFlow Server	18
RayFlow Client	20
Additional Information	21

Introduction

This release of RayFlow 6.5 provides new features, as well as functional improvements and fixes for known issues from prior versions. RayFlow is available as a standalone product as well as it can serve as the backbone for the RaySuite Enterprise Solution.



Visit www.raynet.de for further information regarding the product and current community incentives.

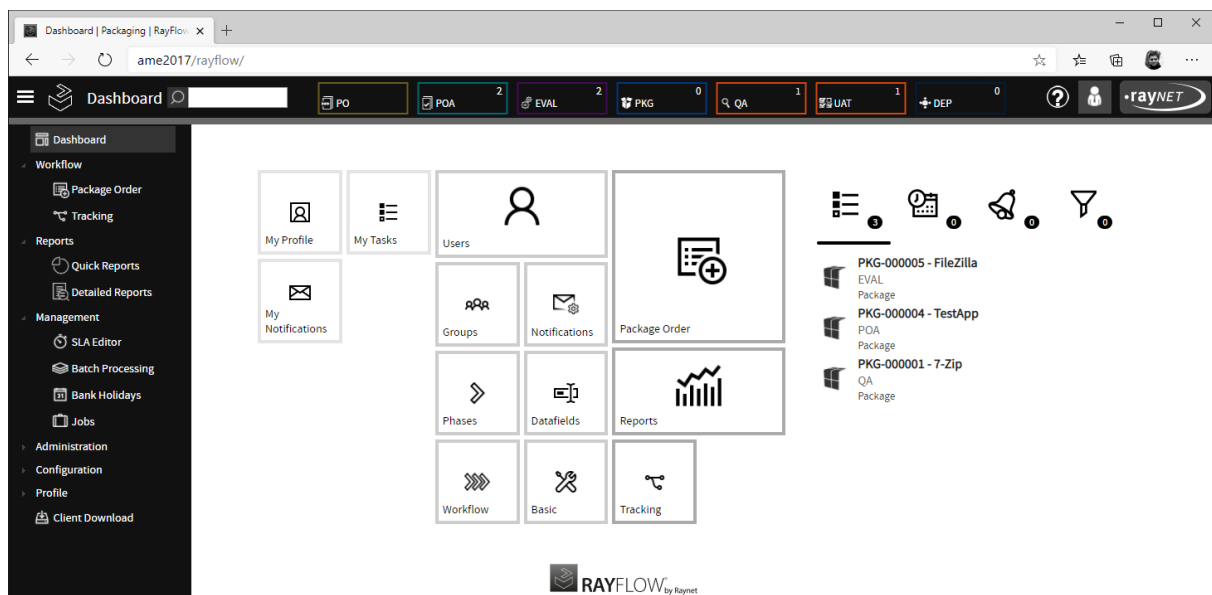
Raynet is looking forward to receiving your feedback from your RayFlow experience. Please contact your Raynet service partner or write an e-mail to sales@raynet.de to add your ideas or requirements to the RayFlow development road map!

What's New?

The following chapters contain an overview of the improvements, resolved issues, and the new features that are part of the new release of RayFlow 6.5.

Refreshed User Interface RF-4621 RF-4026 RF-4690 RF-4712 RF-3959

In this release we have refreshed User Interface of the web component. The style is now consistent with other Raynet products, and several UI/UX improvements have been added to make editing and working with RayFlow easier.



- Task editing now happens on a full screen editor, inline editing has been disabled. Additionally, horizontal screen management has been improved.
- Multi-drop-downs are now clickable on their full width.
- The tool configuration view has now inline editing capabilities and the view is compacted, so that it is not required anymore to scroll horizontally.

- Login History
- Plugins
- Configuration
 - Phases
 - Datafields
 - Task Types
 - Status
 - Workflow
 - Basic
 - Category
 - Clone Mappings
 - Data Mappings
 - Tools
 - Email Templates
 - Appointment
 - Static Pages

Tools

PHASE	NAME	SHOW IN FLOW	CONTEXT MENU	PATH
POA	RayQC Advanced	<input type="checkbox"/>	<input checked="" type="checkbox"/>	..\RayQCAdvanced\RayQCAdCmd.exe
POA	RayQC Advanced	<input checked="" type="checkbox"/>	<input type="checkbox"/>	..\RayQCAdvanced\RayQCAd.exe
EVAL	RayEval	<input checked="" type="checkbox"/>	<input checked="" type="checkbox"/>	..\RayEval\RayEval.exe
PKG	PackBot	<input checked="" type="checkbox"/>	<input checked="" type="checkbox"/>	..\RayPack\RayPack.exe
PKG	PackDesigner	<input checked="" type="checkbox"/>	<input checked="" type="checkbox"/>	..\RayPack\RayPack.exe
PKG	PackRecorder	<input checked="" type="checkbox"/>	<input checked="" type="checkbox"/>	..\RayPack\RayPack.exe
PKG	PackTailor	<input checked="" type="checkbox"/>	<input checked="" type="checkbox"/>	..\RayPack\RayPack.exe
QA	RayQC	<input checked="" type="checkbox"/>	<input checked="" type="checkbox"/>	..\RayQC\RayQC.exe
QA	RayQC Advanced	<input type="checkbox"/>	<input checked="" type="checkbox"/>	..\RayQCAdvanced\RayQCAdCmd.exe
QA	RayQC Advanced	<input checked="" type="checkbox"/>	<input type="checkbox"/>	..\RayQCAdvanced\RayQCAd.exe

Page 1 of 1 (10 Tools) Page size 15

Intune connector RF-3793

In this release we bundled a new utility to connect RayFlow with Intune. After the initial configuration, the tool can be used to pull data from RayFlow and push packages to Intune.

Phase	DEP
Name	Deploy to Intune
Full Name	Deploy to Intune
Description	
Show In Flow	<input type="checkbox"/>
Wait	<input type="checkbox"/>
Context Menu	<input checked="" type="checkbox"/>
No Window	<input type="checkbox"/>
Context Name	Deploy to Intune
Icon	
Path	c:\IntuneForRayFlow\IntuneForRayFlow.exe
Arguments	Deploy -ProjectId #PROJECTID# -TaskId #PACKAGEID# -FileName #IntuneFile# -Architecture #Platform#
Order	600

Refer to the User and Administration Guide for more information about integration of the Intune connector.

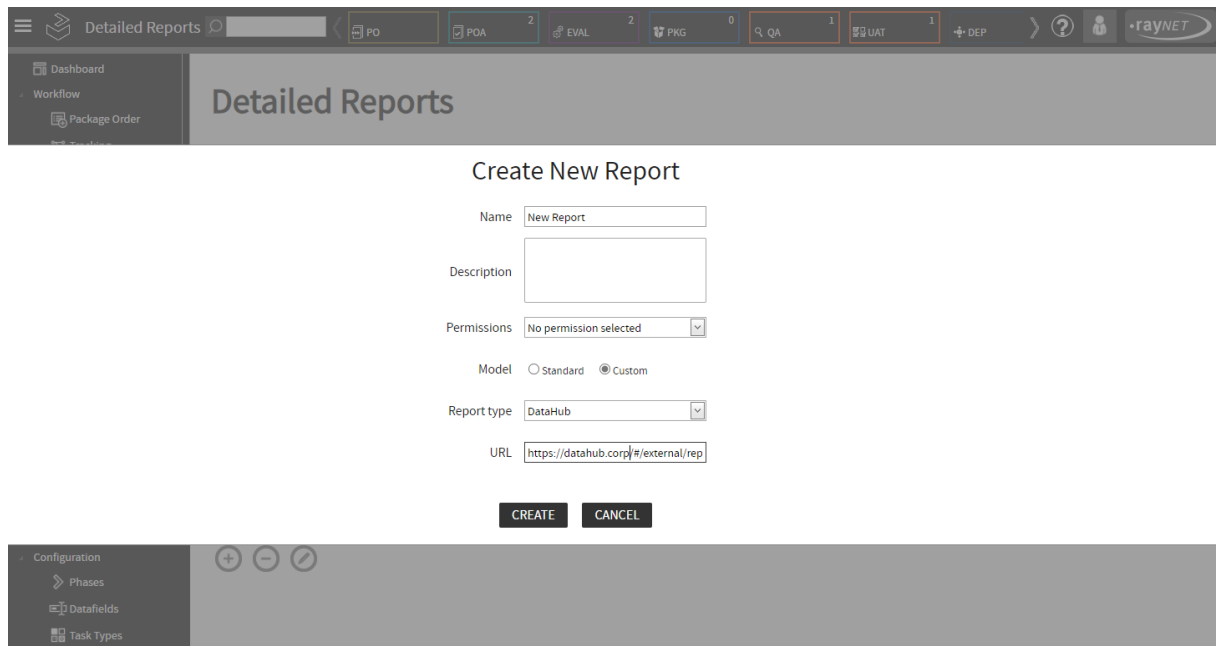
Performance improvements RF-4613 RF-4666 RF-4679

Several backend functions have been optimized in this release. As a result, even huge projects with thousands of packages and fields consume much less RAM and CPU. Several operations are now considerably faster. Below are numbers observed on a real complex instance:

	RayFlow 6.0	RayFlow 6.5
Loading time of phases	30 seconds	20 seconds (-33%) The shorter the better
RAM usage	2000 MB	800 MB (-60%) The smaller the better
CPU Usage spikes	Occasionally 100% CPU	No more CPU spikes

New report type: Data Hub RF-4700

It is now possible to add a new report type - a shared report/dashboard from Data Hub.



Create New Report

Name:

Description:

Permissions:

Model: Standard Custom

Report type:

URL:

Automatic clean-up of jobs and log-in history RF-4644

Historical data is now automatically cleaned-up after a specified period. This on the other hand results in smaller database size and faster query execution. The default rules are:

- Execution history: Purge entries older than 7 days.
- Job history: Purge entries older than 15 days.
- Login history: Purge entries older than 30 days

These settings can be configured by instance root administrator by the usage of new project properties `DATABASE_CLEANUP_EXECUTION_PERIOD`,

DATABASE_CLEANUP_JOBS_PERSIST_PERIOD and
DATABASE_CLEANUP_LOGIN_PERSIST_PERIOD.

Other improvements

- RF-4572 Standard reports have been updated in this release.
- RF-4617 It is now possible to disable or re-enable task types.
- RF-4640 Field "comments" has been added into the "Hold" and "Reject" reports.
- RF-4641 Improved automatic database update.
- RF-4693 All dates stored in database now correctly preserve local time zones.
- RF-4697 Several UI text adjustments to use the wording "task" instead of "order".
- RF-4702 URLs of custom reports are now trimmed after the first instance of ? character.
- RF-4702 Session headers / cookies now use secure settings.
- RF-4710 Improved algorithms for SLA calculation.

Resolved Issues

The following issues from the previous version of RayFlow have been resolved in this release.

- **RF-4215** A rare exception `A generic error occurred in GDI+` has been fixed in this release.
- **RF-4388** When cloning a project, its depot settings were wrongly copied. The issue has been fixed in this release.
- **RF-4401** In PackageStore.com selector, unavailable packages were also shown. The issue has been fixed in this release.
- **RF-4403** Feedback Collector plugin was not resolving some content placeholders. The issue has been fixed in this release.
- **RF-4505** Fixed double negative spelling in some error messages.
- **RF-4520** It was not possible to create a task if any datafield displayed on the Create screen had a quotation mark. The issue has been fixed in this release.
- **RF-4556** It was not possible to add images by dragging and dropping a file on the comment content. The issue has been fixed in this release.
- **RF-4559** An error could be shown when updating a task which had not been owned previously. The issue has been fixed in this release.
- **RF-4568** Icons were missing from the Users and Groups views in the Administration -> Notification view. Missing icons have been added in this release.
- **RF-4593** Quick reports for users were also including disabled users. The issue has been fixed in this release.
- **RF-4601** Column chooser in the Clone task view was not selectable and its window too small. The issue has been fixed in this release.
- **RF-4602** SLA counting was not working properly for specific combinations of settings. The issue has been fixed in this release.
- **RF-4603** Horizontal scrollbar of the Phase view was disappearing on longer task lists. The issue has been fixed in this release.
- **RF-4608** Normal users were unable to update the status of tasks that were not activated prior to selecting the status. Permission checks have been fixed in this release.
- **RF-4609** Normal users were unable to upload files in the Create phase. Permission checks have been fixed in this release.
- **RF-4611** Resizing of grid headers were buggy. The issue has been fixed in this release.

-
- **RF-4622** It was not possible to upload pictures in the comment editor. The issue has been fixed in this release.
 - **RF-4645** Fixed migration from previous version of RayFlow where duplicated menu entries could be created.
 - **RF-4646** Fixed an issue with lookup of data sources not working for auto-completed data fields.
 - **RF-4649** Fixed wrong number of comments returned by Webservice API.
 - **RF-4651** Clone Task was losing field data when task type was changed. The issue has been fixed in this release.
 - **RF-4663** Exporting filtered list was incorrectly exporting all tasks. The issue has been fixed in this release.
 - **RF-4667** Migration script from older versions was not carrying over custom links. The issue has been fixed in this release.
 - **RF-4670** It was not possible to edit or delete a static page. The issue has been fixed in this release.
 - **RF-4673** RayFlow was returning an error when opening a task in a phase containing actionless workflow events. The issue has been fixed in this release.
 - **RF-4715** Fixed Feedback Plugin to only trigger when the Status of the task changes, not any other value like User, ect.

Migration

This chapter of the document is meant to help users upgrade from their existing RayFlow version to RayFlow 6.5.

RayFlow License

If the previously installed RayFlow version has been a version prior to 4.0, it will be necessary to activate the RayFlow using a new `.rsl` license file instead of the old `.license` files that were used previously to 4.0. In this case, reactivate your RayFlow license by using the license activation tool or contact the Support Team using our [Support templates](#). Information on how to reactivate a Raynet Product License can also be found in our [KnowledgeBase](#).

RayFlow Server

Migration from 1.x RayFlow Servers

If migrating from a 1.x RayFlow server to RayFlow 6.5, it is recommended to ask for the help of our consultants.

Migration from 2.x RayFlow Servers or Higher to 6.5

1. Make a Backup of the Current System

(This step is optional but strongly recommended)

A. Uninstall the previous version of RayFlow Server:

- Start the SQL Server Management Studio.
- Right-click on the existing RayFlow database and select **Task > Back Up** from the context menu.

B. Backup the file system:

- Go to the RayFlow Server Installation directory (`%INSTALLDIR%`).
- Right-click on the directory and select **Send To > Compressed Zip Folder**.
- Store the database and the file backups at a safe location.



Note:

The content of the previous related `web.config` file will later be needed for the edition of the new `web.config` file.

2. Uninstall the Previous RayFlow Server

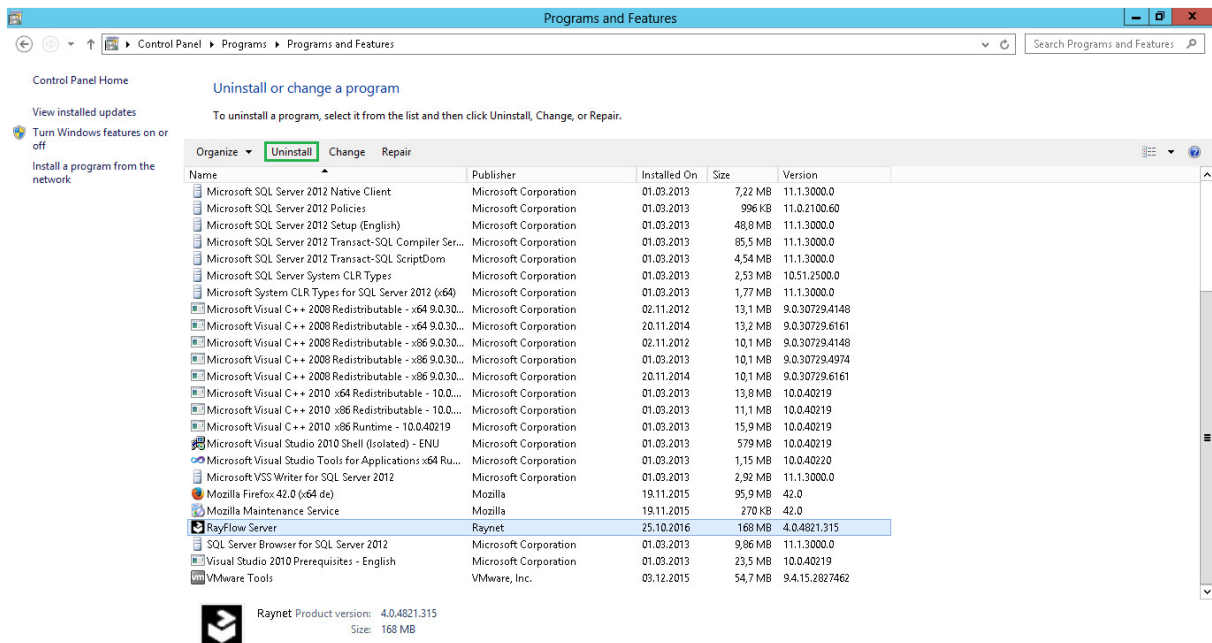


Warning:

If step 1 has been skipped, make sure that the `web.config` file of the previous installation is kept available in a safe location.

After the old `web.config` file has been saved uninstall the old version of RayFlow Server.

To uninstall RayFlow Server use the Windows Control Panel. In the **Uninstall or change a program** section, select the entry for RayFlow Server. Right-click on the entry and select **Uninstall** from the context menu.

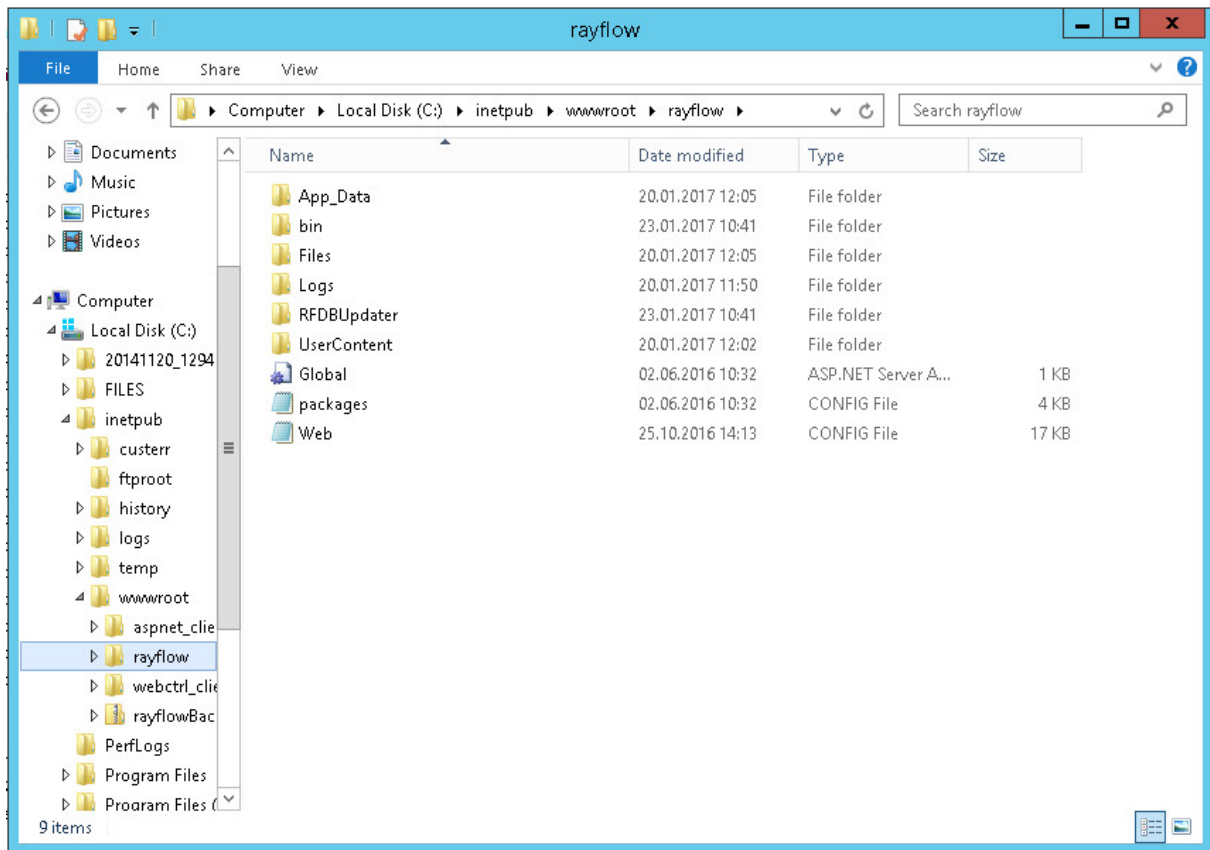


Be aware:

Folders which contain customized data (icons, license files, files uploaded to tasks, etc.) will not be deleted by this action and will remain in the `%INSTALLDIR%` or in its subfolders.

In the screenshot below there is an example of data that will remain after uninstalling the old

RayFlow Server.



3. Installation of RayFlow Server 6.5

Install the current version of the RayFlow Server to the %INSTALLDIR% folder using the MSI installer. Detailed information on how to install the new RayFlow Server can be found in the Server Installation Guide for RayFlow.



Warning:

Skip the database creation during the installation!

4. Edition of the New Web.config File

Open the `web.config` file which is located in the %INSTALLDIR% in a text editor and replace the connection string with the connection string of the old `web.config` file (see either the first or the second step). Save the changes to the new `web.config` file.

Example:

```
<!-- Your connectionstring -->
<connectionStrings>
  <add name="RayflowEntities"
    connectionString="Data Source=(local);Initial Catalog=Rayflow;Integrated
    Security=True;MultipleActiveResultSets=True;App=EntityFramework"
    providerName="System.Data.SqlClient"/>
</connectionStrings>
```

5. Upgrade the RayFlow Database

The database needs to be updated using the RayFlow-Updater. This is a simple console program which contains the four parameters which are necessary to update the RayFlow database to the latest state without the use of SQL scripts.

```
rfDBUpdater.exe -path %INSTALLDIR%\RFDBUpdater\ -upgrade -wait
```

The application itself is located in the following directory of the RayFlow Server installation: %INSTALLDIR%\RFDBUpdater\

Example of how to launch an update from a local folder:

```
rfDBUpdater.exe -upgrade -wait
```

Example of how to launch an update from any folder:

```
rfDBUpdater.exe -path %INSTALLDIR%\RFDBUpdater\ -upgrade -wait (with full path %INSTALLDIR%)
```

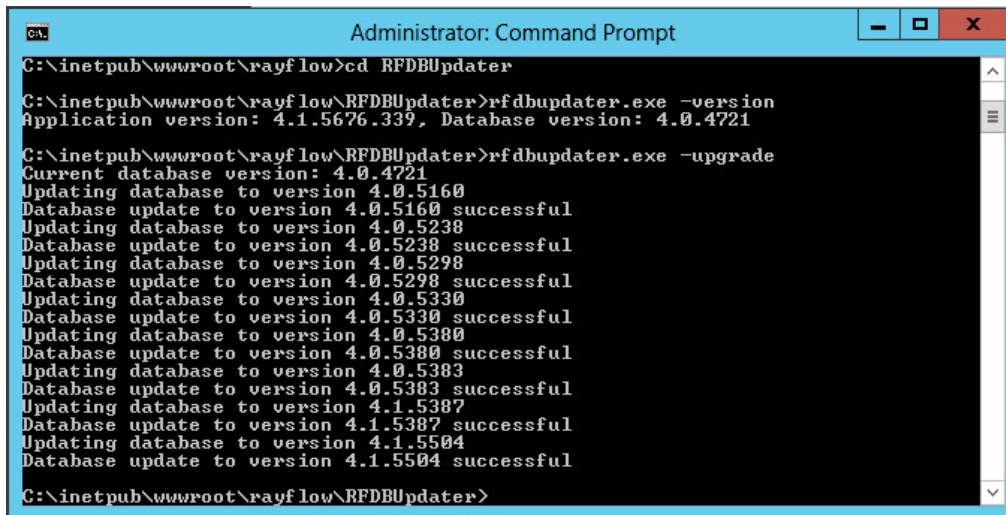
List of Arguments:

-path: The path containing the RayFlow Server installation. It is necessary for the Database/Connection string which will be taken from the `web.config` in the given path. At the same time, the path is the address of the SQL Scripts folder which also resides in the same folder. The path can be omitted if the command is launched from the RayFlow Server installation folder.

-upgrade: Using this parameter will update the database to the latest state.

-version: Get the current version of RayFlow.

-wait: Wait for a key action.



```
Administrator: Command Prompt
C:\inetpub\wwwroot\rayflow>cd RFDBUpdater
C:\inetpub\wwwroot\rayflow\RFDBUpdater>rfdbupdater.exe -version
Application version: 4.1.5676.339, Database version: 4.0.4721
C:\inetpub\wwwroot\rayflow\RFDBUpdater>rfdbupdater.exe -upgrade
Current database version: 4.0.4721
Updating database to version 4.0.5160
Database update to version 4.0.5160 successful
Updating database to version 4.0.5238
Database update to version 4.0.5238 successful
Updating database to version 4.0.5298
Database update to version 4.0.5298 successful
Updating database to version 4.0.5330
Database update to version 4.0.5330 successful
Updating database to version 4.0.5380
Database update to version 4.0.5380 successful
Updating database to version 4.0.5383
Database update to version 4.0.5383 successful
Updating database to version 4.1.5387
Database update to version 4.1.5387 successful
Updating database to version 4.1.5504
Database update to version 4.1.5504 successful
C:\inetpub\wwwroot\rayflow\RFDBUpdater>
```



Note:

If any errors are reported, please contact the support team.

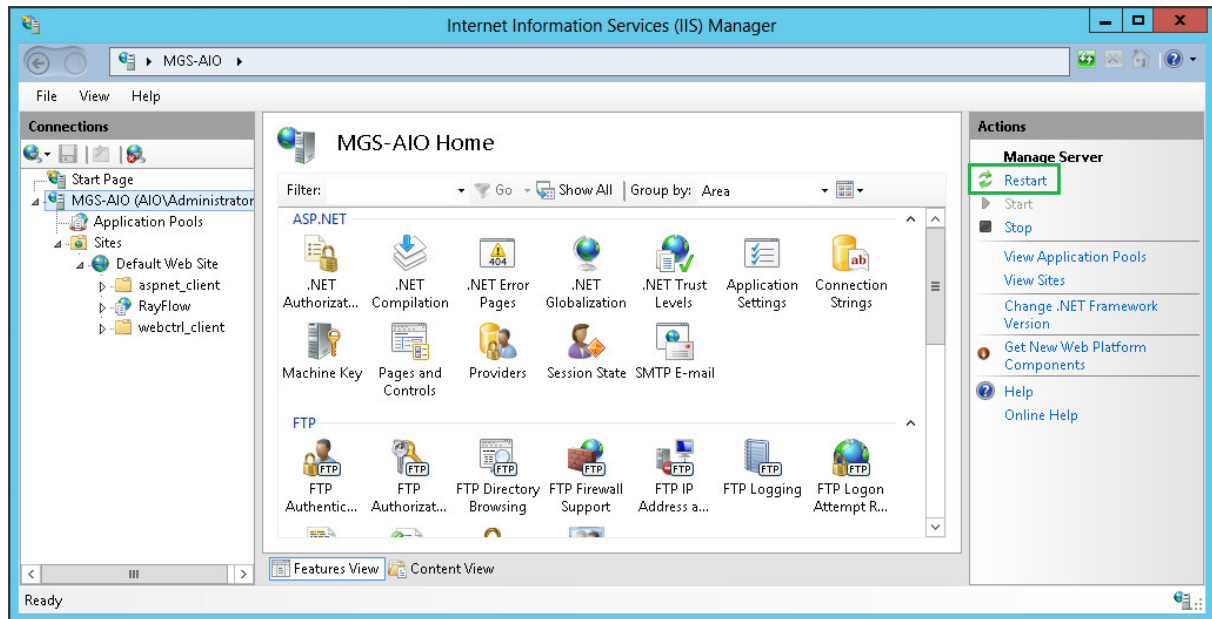
6. Manual Configuration

(The necessity of these steps depends on the environment.)

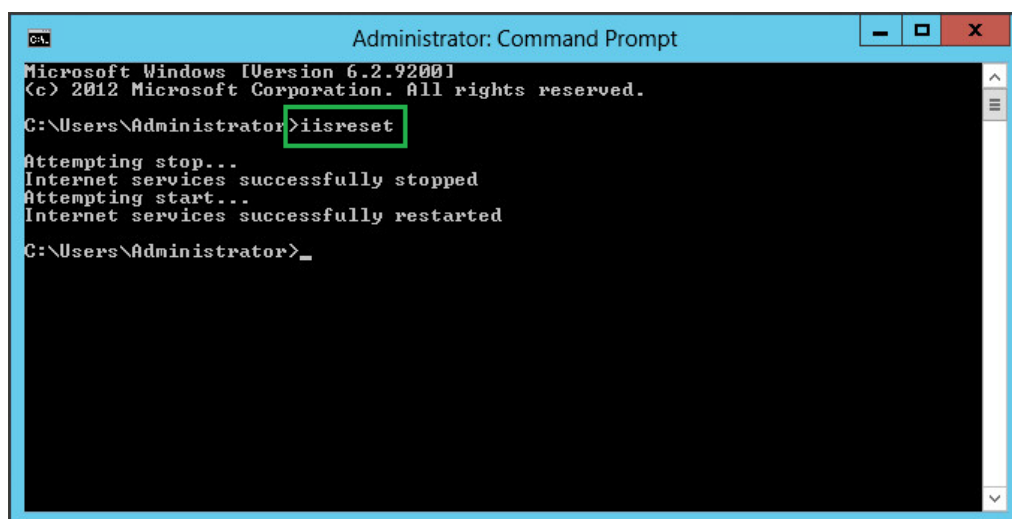
Internet Information Services (IIS) restart

Restart the Internet Information Services either using the Internet Information Services Manager or via Command Prompt using the `iisreset` command line.

Internet Information Services Manager:



"iisreset" command line:



RayFlow Client

Upgrading the RayFlow Application

General upgrade preparations

RayFlow 6.5 is delivered as an MSI software package. In order to install it safely:

1. Download the MSI package for RayFlow 6.5 from the Raynet resource repositories.
(If you have not already received credentials, please contact the Raynet support team via support@raynet.de to get them via email)
2. Copy all files that need to be kept for later reuse or look-up (such as `RayFlow.exe.config` for proxy settings, `dashboard.xml`)
3. Execute the RayFlow 6.5 MSI package and work yourself through the setup routine.

Adjusting the newly installed RayFlow instance

1. Define config files and settings according to the old system state.
2. Launch RayFlow.
3. If there are issues regarding broken or missing functionality, please feel free to contact the Raynet support team via support@raynet.de.

System Requirements

RayFlow Server

Hardware Requirements

Minimal

- Minimum disk space required: 120 GB
- Minimum RAM required: 1GB
- Pentium 4, 2.4 GHz Processor
- Network 100Mbit

Recommended

- CPU Intel Core i5 or i7
- 8GB RAM
- Disc Space: 500 GB RAID 10 (4x250GB)
- Network 100Mbit

Prerequisite Software

The following are the minimum software requirements for the installation and running of RayFlow 6.5.

- Windows Server 2008 SP2 or higher
 - Microsoft SQL Server 2008 or higher
 - IIS 7 or higher
 - .NET 3.5 for SQL Server
 - .NET 4.5
-

**Note:**

Minimum server requirement for .NET Framework 4.5 is Windows Server 2008 SP2. Further information on system requirements for .NET Framework 4.5, can be found under the following link: <https://msdn.microsoft.com/en-us/library/8z6watww%28v=vs.110%29.aspx>

- Microsoft Report Viewer Runtime (Required to view SSRS Reports)

Please refer to the following links for system requirements related to different versions of Microsoft Report Viewer Runtime

Microsoft Report Viewer 2012 Runtime

<http://www.microsoft.com/en-us/download/details.aspx?id=35747>

Microsoft Report Viewer Redistributable 2008

<http://www.microsoft.com/en-us/download/details.aspx?id=577>

- Crystal Report Runtime 2010 13.0.14 (Only required if Crystal Reports are used for reporting)

Supported internet browsers:

- Microsoft Internet Explorer™ version 9.0 and newer
- FireFox version 3 and newer
- Chrome
- Microsoft Edge
- It is recommended to use a screen resolution of at least 1024x768 pixels.
- Although other browsers might work they are not officially recommended.

RayFlow Client

Hardware Requirements

Minimal

- Screen resolution: 1024 x 768 pixels
- Color settings: 16 bit
- RAM: 2GB
- Disk space: 10GB

Recommended

- Screen resolution: 1280 x 1024 pixels
- Color settings: 32 bit
- RAM: 4GB or higher
- Disk space: 100GB or more

Additional Information

Further information regarding RayFlow can be found in several resources which are available.

- The *Operations Supplement* provides information about third-party software and libraries redistributed with RayFlow.
- The *Administration and Configuration Guide* provides detailed information about RayFlow Server.
- The *Installation Guide* provides detailed information on how to setup a RayFlow server instance.
- The *User Guide* provides information for user of the RayFlow client.
- The product website <https://raynet.de/en/Raynet-Products/RayFlow> provides information about the product, news, and support.
- Raynet and its partners offer a range of training courses that can also be customized to meet your requirements. For more information on these courses, speak with your Raynet consultant or contact the Raynet Sales department via sales@raynet.de.



Raynet GmbH

Technologiepark 20
33100 Paderborn, Germany
T +49 5251 54009-0
F +49 5251 54009-29
info@raynet.de
support@raynet.de

www.raynet.de