



RAYMANAGESOFTi[®]

A New Generation of Software Deployment

**Release Notes
RayManageSofti 11.4**



RAYVENTORY[®]
is part of RayManageSofti

RayManageSofti is part of RaySuite.

•rayNET

**Copyright © Raynet GmbH (Germany, Paderborn HRB 3524). All rights reserved.
Complete or partial reproduction, adaptation, or translation without prior written permission is prohibited.**

Release Notes for release 11.4

Raynet and RayFlow are trademarks or registered trademarks of Raynet GmbH protected by patents in European Union, USA and Australia, other patents pending. Other company names and product names are trademarks of their respective owners and are used to their credit.

The content of this document is furnished for informational use only, is subject to change without notice, and should not be construed as a commitment by Raynet GmbH. Raynet GmbH assumes no responsibility or liability for any errors or inaccuracies that may appear in this document. All names and data used in examples are fictitious unless otherwise noted.

Any type of software or data file can be packaged for software management using packaging tools from Raynet or those publicly purchasable in the market. The resulting package is referred to as a Raynet package. Copyright for any third party software and/or data described in a Raynet package remains the property of the relevant software vendor and/or developer. Raynet GmbH does not accept any liability arising from the distribution and/or use of third party software and/or data described in Raynet packages. Please refer to your Raynet license agreement for complete warranty and liability information.

Raynet GmbH Germany
See our website for locations.

www.raynet.de

Contents

Introduction	4
New Feature highlights	5
Improvements & Changes	9
Improvements	9
Resolved Issues	11
Known Issues	19
Breaking changes	20
System Requirements	21
RayManageSofti System Requirements	21
RayManageSofti Hardware Requirements	21
RayManageSofti Prerequisite Software	23
RayVentory System Requirements	30
RayVentory Hardware Requirements	30
RayVentory Prerequisite Software	31
Compatibility	34
Compatible Components	34
Upgrading from Earlier Releases	35
Additional Information	36

Introduction

RayManageSofti 11.4, just like its predecessors, will continue to provide a complete set of products for software and operating system (OS) deployment, as well as security and patch management. The software includes four components for deploying, patching, and securing applications and operating systems, all built on a common infrastructure that includes IT asset discovery, inventory and software asset management. The client-centric architecture leverages existing IT hardware to speed up implementation and reduce costs for mid-size and large organizations.

The release of RayManageSofti 11.4 has a great deal to do with the feedback from our customers since some of its new features and enhancements come as a direct result of that communication.

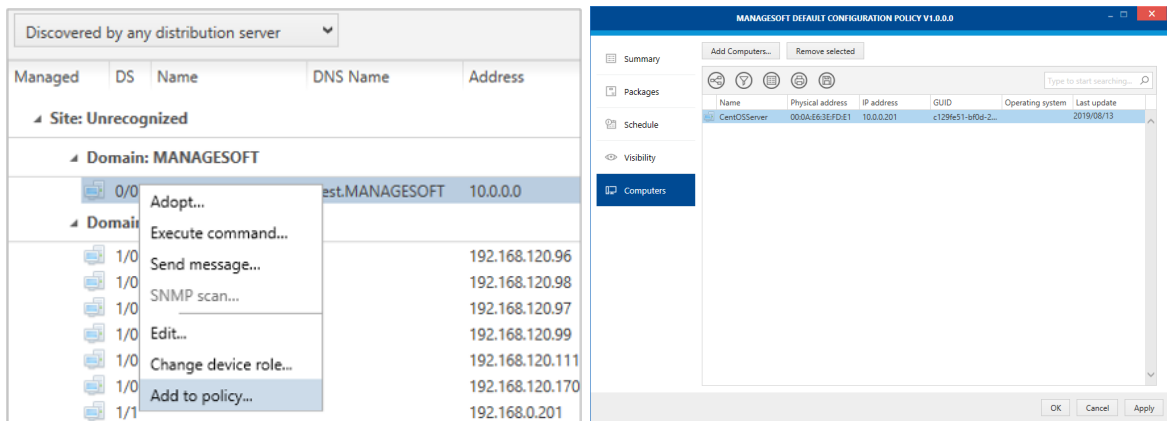
Welcome to RayManageSofti 11.4.



New Feature highlights

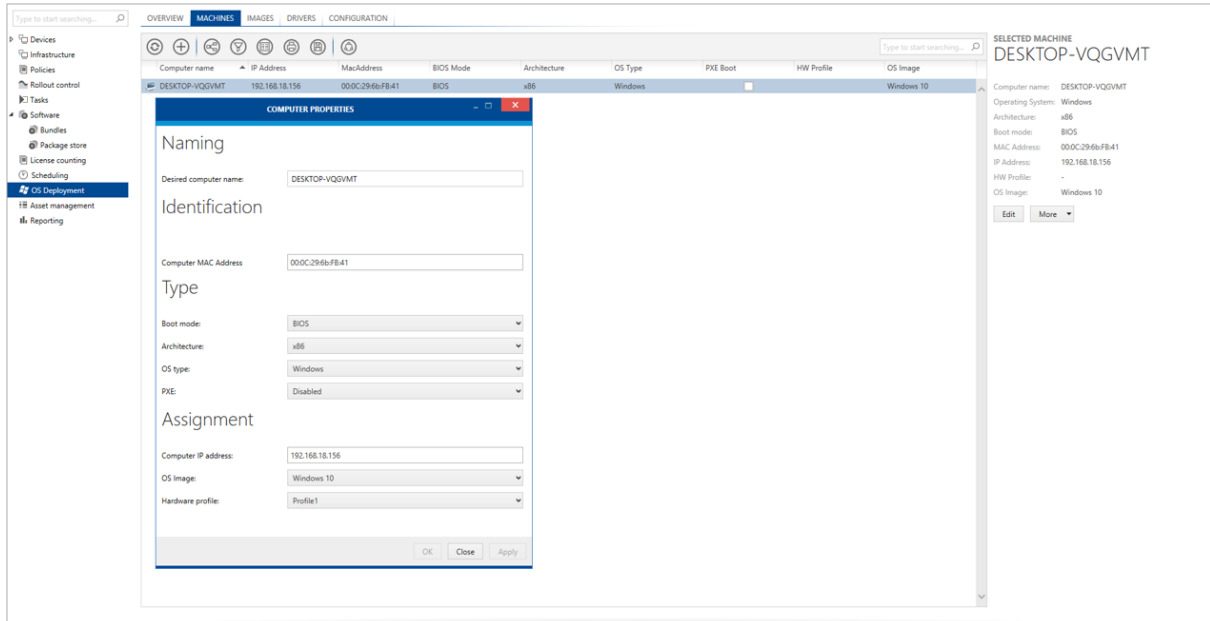
Enhancements for Non-AD Scenarios RMS-3895 RMS-3560

We expanded our native support for non-AD scenarios by porting several features and adding many improvements to non-AD domain handling. This also includes a full support for the ManageSoft domain in the **Patch Automation** module.



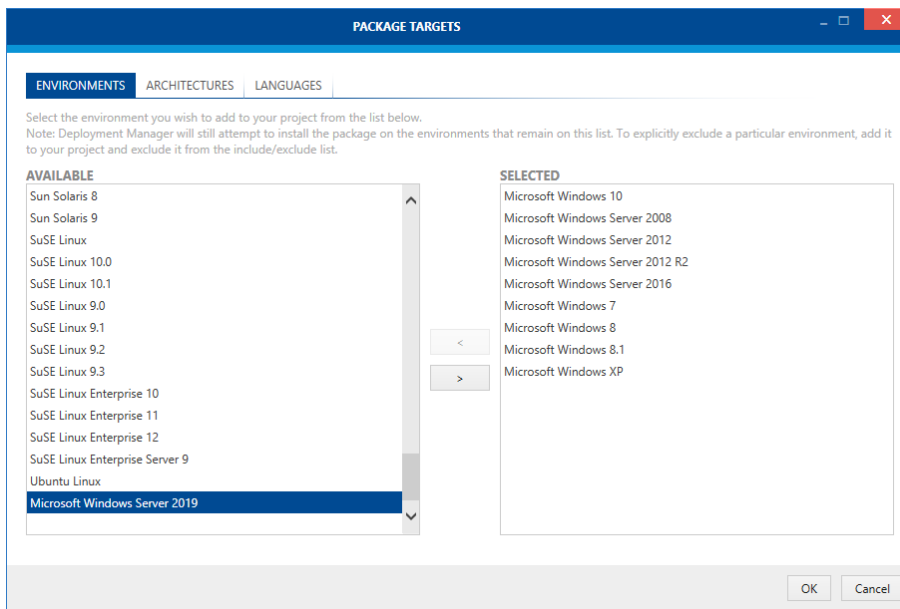
Improved OS Deployment RMS-3836

The OS Deployment module has been rewritten in order to ensure for a better, faster, and more feature-packed support of the Windows and the non-Windows deployment. While the internals have changed, the UI remained largely the same, making the transition to the new version easy.



Support for Microsoft Windows Server 2019 RMS-3305 RMS-4113

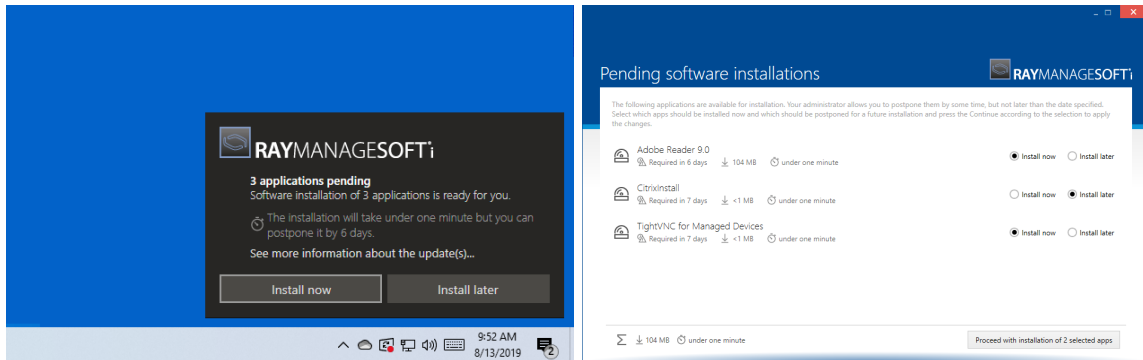
Microsoft Windows Server 2019 has been added to the list of support systems. This also includes the ability to deploy Server 2016 with the **OS Deployment** module.



Modernized look and feel of the User UI (Postponement and Reboot dialogs) RMS-4106

We reworked several key dialogs presented to the end user on Windows systems. From this

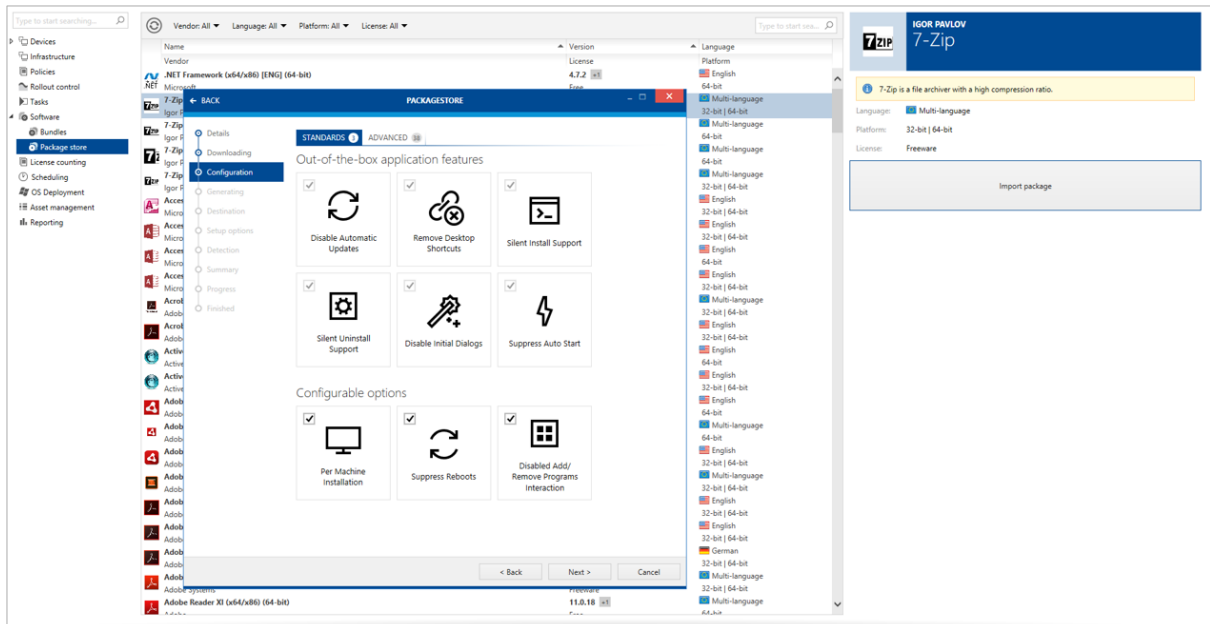
version, they interact with the user using a modern, consistent, Windows-10 inspired UI, which highlights key points and required actions, while hiding background system complexity.



Our non-Windows dialogs received minor updates and clean-up too.

Package Creation with The Package Store Component **RMS-4034**

The **Package Store** snap-in has been reworked. It now offers a true way to create and customize packages from the scratch together with all options offered by our **Package Store** counterpart, like downloading the sources, customizing the package, and pushing to the **RMSi Software Library**.



Availability of this feature depends on Product's license edition.

Support for TLS1.2 and Later **RMS-3838**

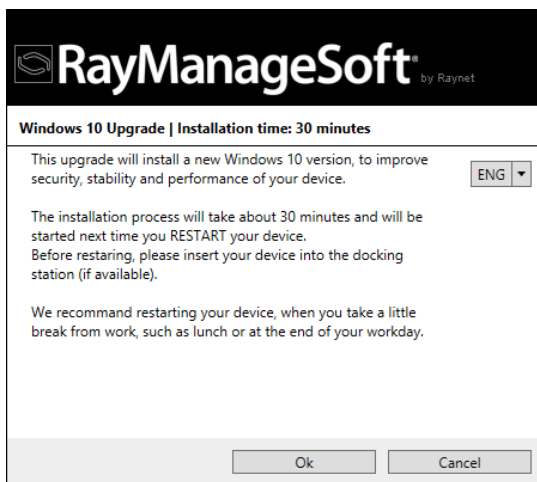
The OpenSSL library has been migrated to a newer version in order to add support for TLS1.2 and later versions in several places.

Improvements & Changes

Improvements

New options for the In-Place upgrade mechanism [RMS-3536](#)

New options have been added to the In-Place Upgrade Mechanism which can be used to control the desired installation time, expected length, and a custom description. These values can be used to give the end-user a proper feedback and indication regarding the in-place upgrade.



Improved Edit as.. option in the Policy snap-in [RMS-3534](#)

The **Edit as...** option in the Policy snap-in has been improved in order to now also work for both AD and non-AD policies. The error messages have also been improved in order to better understand potential issues.

Inclusion of Apps Installed in User-context in Software Inventory Reports [RMS-3840](#)

The Software Inventory reports have been changed to include apps installed in the user-context as well.

Automatic Distributions of Policies within Security Patch Manager

RMS-3841

It is now possible to automatically distribute policies within the **Security Patch Manager** automation.

Improved performance of the Administration Console RMS-3533

The performance of the snap-ins that load information about the organization has been improved. Thanks to this improvement there are fewer calls to DB and the initial loading time of snap-in loading is decreased.

Other improvements

- **RMS-113** In this version, there is a default limit of a maximum of 10 log files with an upper size limit of 100 KB. The default location of the log files has changed to `C:\Windows\Temp\ManageSoft\RmsAliveService\RmsAliveService.log`.
- **RMS-658** The **Infrastructure** snap-in has been improved and does now include a default sorting.
- **RMS-1167** A default size limit of 5000 bytes has been added to the logging module of the **Security Analyzer**. Any exceeding data is logged into a file with the extension `.old`.
- **RMS-1779** It is now possible to discard changes to the **Package Properties** dialog within the **Edit Policy** window.
- **RMS-2549** A new button to trigger the refresh of the **Dashboard** content has been added.
- **RMS-3153** A launch condition that prevents the installation of the Distribution Server Lite on machines that do not have .NET Framework 4.5.1 installed has been added.
- **RMS-3652** We extended the target configuration for the **Windows Malicious Software Removal Tool** (MRT).
- **RMS-3654** The determination of required **Security Patch Manager** actions has been improved to also consider required Bulletins. The previous behavior prevented updates like KB890830 from working in **Patch Automation**.
- **RMS-3655** The logging part of `ndtrack` has been rewritten to use the general tracing for WMI related functionalities.
- **RMS-3679** The performance of the **Hardware Overview** report has been improved.
- **RMS-3809** We improved several reports, for example **Details Report - License Information**, **Details Report - Hyper-V Instance Information**, **Overview Report**, and Oracle sub-reports.

- **RMS-3812** A new checkbox has been implemented which controls whether warnings about a nearly exceeded RayManageSofti license quota should be shown.
- **RMS-3885** A new **Add to policy** option has been added to the context menu in the **Devices** snap-in.
- **RMS-4081** Several functional and performance improvements for Oracle reports have been added.
- **RMS-4168** The property **Source directory** in the **Package Editor** has been changed from required to optional.
- **RMS-4177** Package Editor can now copy imported files to their respective relative locations.. Previously, the files were only referenced which could cause issues during packaging and distribution.
- **RMS-4238** Several reports aggregating information about installed software have been improved.
- **RMS-4242** We liberalized the validation of the application version in the *Copy Package Wizard* for non-Windows packages, so that it is possible to use versions like 1.0.0-a.

Resolved Issues

- **RMS-995** We fixed a problem where the supersede information could have been lost when working with security bulletins.
- **RMS-1002** We fixed a problem with some devices being rebooted several times in a row. The problem was caused by incorrect content of the automatically generated security packages.
- **RMS-1062** We improved the matching of data from security update files. Now, in case that there are no direct matches, the display name can be used as well.
- **RMS-1064** We fixed the internal way non-MS patches are handled by adding some additional internal identifying properties.
- **RMS-1082** We fixed a problem resulting in an error in RMSSA when using WUA by automatically including potentially superseded updates.
- **RMS-1480** We fixed a problem where closing the dialog adds a DL or RL to a group with the option **Go to the selected distribution group after closing the dialog** enabled was not highlighting the entry.
- **RMS-1553** We fixed a problem with saving of MGS policies, where unnecessary access groups were created each time, decreasing the overall performance of the database.
- **RMS-1646** We fixed a problem in the **Security Patch Manager** where the version of the **Adobe**

Reader was not correctly determined from the update information.

- **RMS-1962** We fixed the **Patch Installer** to not show a console window anymore. It will now run fully silent.
- **RMS-2088** We fixed a problem where packaging an SPM package could cause issues with twin GUIDs.
- **RMS-2153** We fixed the behavior of the OSD importer and so that it provides now a valid error message in case of an incomplete package.
- **RMS-2309** We fixed a problem with the **Security Bulletin** report rendering it not being properly registered.
- **RMS-2327** We fixed issues in the **Software** snap-in where the **Detected on** section was showing some devices which actually did not have the software installed.
- **RMS-2410** We fixed a problem with the RMSi Messaging Client MSI installer not checking if the .NET Framework 4.5.2 or later was installed.
- **RMS-3087** We enabled an option to add a new security filter group for non-AD users (ManageSoft OU) if they are permitted. Previously, the option was disabled and only available for permitted AD users.
- **RMS-3092** We fixed a problem where an unnecessary prompt could be shown to the user if he was editing the external installer properties dialog and accepted the changes without touching the source path.
- **RMS-3248** We fixed a problem with the MSI installation and self-repair which was triggering an MSI self-healing repair after removing `etap.trace` and starting the program from an advertised entry point.
- **RMS-3277** We fixed a problem with the creation of the first image in the Boot images library which was not showing the new folder immediately.
- **RMS-3278** We fixed a problem where the RPM importer was not correctly recognizing the target of a package and was therefore not writing this bit of information into the `.ndp` file.
- **RMS-3280** We fixed a problem with the MSI installation of the **Warehouse** component which was not fully supporting a non-standard location.
- **RMS-3284** We fixed a problem with `ndtrack.*` that was resulting in an incorrect recognition of Oracle Linux (which was reported as Redhat Enterprise Linux).
- **RMS-3290** We fixed a problem with the RPM import where the package properties were determined from the file names only. This caused issues with unsupported file name patterns.
- **RMS-3300** We removed a typo from the **OS Image Import Wizard**.

- **RMS-3301** We removed a typo from the **WIM Configuration File Options**.
- **RMS-3372** We fixed a problem with the **Adoption and Inventory** where the snap-in **Devices** could loose the managed device status.
- **RMS-3379** We fixed a problem with the adoption of distribution servers which were not properly copying various RayVentory resources.
- **RMS-3385** We fixed a problem with refreshing counters in the Managed Device launcher which occurred in case of optional packages and exeucted uninstall routines.
- **RMS-3408** We changed some wording in various installation reports.
- **RMS-3421** We fixed a problem where adopted Debian devices were unable to install packages.
- **RMS-3428** We fixed a problem with the Discovery Wizard where the user was unable to continue past the **Discovery Methods** page after selecting the DHCP discovery.
- **RMS-3430** We fixed a crash when creating a policy with the same name in the ManageSoft domain.
- **RMS-3431** We fixed a problem with copying a package that was having a name with the special character "+". Copying such a package was throwing an exception on a later page due to the special character.
- **RMS-3434** We fixed the improper tracking of **touched** and **dirty** input fields in the **RayManageSoft Policy Editor**.
- **RMS-3449** We fixed a problem with the **Package Editor** where removing a folder with shortcuts could result in an exception.
- **RMS-3452** We fixed the Policy Editor dialog where the maximum postponement date could not be changed and was always reverted to the default value when editing a package.
- **RMS-3466** We fixed a problem with the connection of the RMSi Remote Console to a non-domain server where accessing several snap-ins could throw an error about Active Directory issues.
- **RMS-3485** We fixed some upgrade issues that could be encountered in complex scenarios.
- **RMS-3486** We fixed some values of environments being defined in inconsistent ways.
- **RMS-3489** We fixed a problem with the option **Download and import support packages** which was leading to a crash if there was no internet connection.
- **RMS-3491** We fixed a problem with a managed device package for Debian systems whose installation state was reported as failed on Debian devices even tough the installation technically run to the end and installed the product successfully.

- **RMS-3507** We fixed a problem with the inheritance of environments caused by the addition of additional environment tags to the installer entity.
- **RMS-3508** We removed the uninstall context menu from the sidebar in the **Software** snap-in as it was not the right place for package management.
- **RMS-3512** We fixed a problem with the OSD installation that was also applying otherwise to-be-disabled security patches.
- **RMS-3553** We fixed a problem with the Windows Selector where the tab **Expected** was not properly expanded to accommodate its content.
- **RMS-3555** We fixed a problem with *Microsoft Windows 10* being wrongly defined as `Windows 10` instead of `Microsoft Windows 10` and `Microsoft Windows Server 2016` missing in the default target list.
- **RMS-3577** We fixed a wrong wording in messages that are shown in the **Security Patch Manager Automation Rule** dialog.
- **RMS-3612** We fixed the behavior of `ndtrack.exe` which resulted in a recursive scanning of reparse-points.
- **RMS-3621** We fixed a problem in `mgsimport.exe` that was overwriting the **Operating System** caption for SUSE Linux distributions.
- **RMS-3670** We fixed a problem with button **Update Required Patches** where the functionality was sometimes not working.
- **RMS-3686** We fixed the grouping of SPM patches for a proper support of SQL Server 2016 and other versions.
- **RMS-3693** We fixed a problem with the Installer Agent (`ndinstlr`) being unable to communicate over HTTPS on Linux machines.
- **RMS-3696** We fixed an **Security Patch Manager** issue resulting in a `NullReferenceException` when creating a patch for KB4052908.
- **RMS-3711** We fixed a problem with the **Package Dependency** builder where the **Minimum CPU speed** hardware inventory dependency was displayed as **Required CPU speed**.
- **RMS-3728** We added a missing **OS Deployment Manager** installation marker to the MSI installer.
- **RMS-3737** We added a missing dot in the **License Manager** window.
- **RMS-3745** We fixed a problem with the refreshing automation view of the **Security Patch Manager** with more than four tasks displayed which could have resulted in a crash.
- **RMS-3756** We reworked several log strings in the **Security Patch Manager** database.

- RMS-3764 We fixed the **Security Patch Manager** automation rule processing for weekly events which caused issues with the timing of groups.
- RMS-3788 We eliminated several typos in the **In-Place Upgrade Wizard** and the **Package Wizard**.
- RMS-3789 We fixed a crash when creating hardware profiles.
- RMS-3820 We fixed the **Inventory Failure** report failing to open.
- RMS-3862 We eliminated a typo from the license window error panel.
- RMS-3878 We fixed the behavior of `ndtrack.sh` on Ubuntu 12 that prevented it from correctly gathering package names.
- RMS-3908 We fixed loading of large chunks of data in the **Asset Manager**.
- RMS-3917 We fixed a problem with adding to the policy within the **Security Patch Manager Automation Editor** where the field containing the delay (in days) was not saved properly when navigating away from the respective page.
- RMS-3945 We fixed a problem in `ndtrack.sh` that caused crashes on Solaris 10.
- RMS-4001 We fixed an error shown for the validation of local user credentials within the **Task Details** page.
- RMS-4026 We fixed a problem where it was not possible to create a new root folder in the **Files and Folders** part.
- RMS-4028 We fixed a crash of the **Approval Wizard** when working in a workgroup.
- RMS-4080 We fixed a problem with **Security Patch Manager** where **Compliant by** bulletin reports only drilled down to the specialized report via the **Total** column values.
- RMS-4092 We fixed cut off texts in the **Password Store Manager** dialog.
- RMS-4094 We fixed the 404 error when uploading results from AIX machines.
- RMS-4099 We fixed a rare `NullPointerException` thrown when entering the **Policies** snap-in.
- RMS-4117 We fixed a problem where the inventory import failed to import an inventory where a hardware element contained properties with a name but without a value.
- RMS-4134 We fixed a regression in version 11.0 which caused the **Search bar** to disappear from the **Distribution Wizard**.
- RMS-4137 We adjusted the `OpQueries.sql` script by adding the missing `GO` statement and making sure that all stored procedures are created once.

- **RMS-4155** We fixed a problem with non-persistable Group Policy linking.
- **RMS-4160** We fixed a problem with the refreshing of the Device sidebar after adding a package to a policy.
- **RMS-4165** We fixed a performance issue that has been caused by the automatic creation of new access groups every time a ManageSoft Policy was saved for each package.
- **RMS-4174** We fixed the variable `PackDirectory` being set incorrectly during packing a copied package.
- **RMS-4177** We fixed several issues with the import of files to `.ndp` projects mostly related to the **Copy local** option.
- **RMS-4180** We fixed the creation of the default package name when copying an existing package to be of the same format as when creating a new package.
- **RMS-4187** We fixed a problem with the **Copy Package Wizard** where the **Package Path** was not properly displayed if the name was too long to fit into a window frame.
- **RMS-4189** We fixed a problem with the comparison of versions in the **Security Analyzer** module where the display version was incorrectly compared if the left and the right side had different numbered version units.
- **RMS-4195** We fixed a problem with the removal of software packages where the removal could end with an `IndexOutOfRangeException` exception.
- **RMS-4196** We fixed a problem where the non-Windows selector was missing an icon in the top right corner.
- **RMS-4199** We fixed a problem with the **RPM Package Import Wizard**. Certain packages could not be added to a ManageSoft policy.
- **RMS-4207** We fixed an issue with the UI in the **Software library** where the list was not refreshing after importing an RPM package.
- **RMS-4208** We fixed an issue with the **Software Usage Tracking** where the data could remain intact after a related computer entry was deleted.
- **RMS-4212** We fixed several issues with the installation of the **RMSi Client Service**.
- **RMS-4216** We fixed a problem with the removal of orphan packages in the **Software library** where removing such entries was leading to incorrect tree structures being shown.
- **RMS-4219** We improved the UI of the Package Editor by ensuring that the sidebar behavior in case of an empty selection shows a consistent message.
- **RMS-4228** We fixed some issues with the merging of policies where in certain scenarios the resulting `.npl` files were incorrectly merged.

- **RMS-4229** We fixed an issue where the RPM Import Wizard was incorrectly treating the imported version as major version, using 0 as value for the other fields.
- **RMS-4230** We fixed a problem with the **Image Import Wizard** which lead to a `NullReferenceException` when importing a new image.
- **RMS-4231** We fixed an issue with the **OS Deployment** UI where policies assigned to a device were not shown in the right-hand sidebar.
- **RMS-4234** We fixed a problem where it was not possible to save changes when using the **RPM Package Editor**.
- **RMS-4235** We fixed a problem where policies assigned to a device were not shown in the right-hand sidebar when in the **Devices** view.
- **RMS-4287** We fixed some minor issues with the Package editor, where the window caption was not displayed and some settings were improperly hidden.
- **RMS-4303** We fixed a problem with an infinite loading of the details pane for HW profile and Make&Model entries after creating a new entry.
- **RMS-4304** We fixed a problem where adding an existing driver to a HW profile or Make&Model object required three clicks on a single checkbox.
- **RMS-4306** We fixed a rare problem with **Security Patch Manager**, where updating of required patches did not work with hidden required bulletins.
- **RMS-4338** We fixed a problem with the **License Counter** finishing with error after adding entries in case of certain `Null` database values.
- **RMS-4339** We fixed an incorrect formatting of versions (using commas instead of dots) in dialogs **Hardware Profiles** and **Make and Model**.
- **RMS-4344** We fixed OS Deployment **Make and Model** windows to use proper titles when adding new items (without brackets around).
- **RMS-4352** We fixed the version format to use dots instead of commas in the **Infrastructure** snap-in sidebar.
- **RMS-4362** We fixed invalid tooltips for buttons *Send Message* and *Discovery* in the **Devices** view.
- **RMS-4370** We fixed a typo in a toggle button inside of the **Bundles** snap-in.
- **RMS-4373** We fixed a problem with missing device names in the details panel of the Tasks history screen
- **RMS-4397** We fixed a problem with **Policy Credential Manager** dialog, where *Close* button was initially inactive, and the labels were incorrectly upper-cased.

- **RMS-4398** We fixed some minor issues in the **Policy Credential Manager** (duplicated descriptions and activated context menu even if no items were present in the list).

Known Issues

For a list known issues in RayManageSofti refer to the Raynet [Knowledge Base](#). If there are any known issues, the respective information can be found here and will be kept up-to-date.

- **RMS-4243** Compliance reports may be sometimes blank. If that is the case, make sure to clean-up the database from orphaned *Computerentries*, having no corresponding *NetworkDevice*
- **RMS-4246** Adoption of an unmanaged non-AD Windows device works only with built-in Administrator account. As a workaround, use built-in accounts.
- **RMS-4298** Triggerring a reboot with a remotely executed `RMSReboot.exe` may return a failure message "The device rejected the command." although the machine could be successfully rebooted. This issue can be workarounded by calling the legacy file `Reboot.exe` instead of `RMSReboot.exe` with the exact set of parameters.
- **RMS-4333** Non-AD mode functionality is not fully available for Unix/Linux/Mac devices. These devices still use a single MGS policy and are not targeted by the new policy filtering capabilities.
- **RMS-4363** Debian and Ubuntu use Linux Adoption Package instead of Debian adoption package.
- **RMS-4364** Solaris packages cannot be imported due to unsupported keyboard inputs.
- **RMS-4374** Deleted managed device settings are not removed from database.
- **RMS-4378** It is not possible to open Selector in RHEL 7 due to an unidentified platform.
- **RMS-4379** Only computers being in the `MANAGESOFT` domain are manageable by the ManageSoft policy. In order to workaround this, download and implement an updated settings package and then perform policy association in order for those devices to comply with their desired state.
- **RMS-4395** After binding a device to a computer, its domain is not automatically refreshed in the UI. The user has to refresh the grid to update the value.
- **RMS-4402** OS Deployment may sometimes show an error *The memory could not be rea* after installing Windows. This message can be ignored by pressing the OK button, it does not have any negative impact on deployment and performance.

Breaking changes

- **RMS-4110** We were forced to remove Java and Adobe Shockwave from the SPM Targeting because due to their servicing and licensing changes we are no longer able to support their patching processes
- **RMS-4106** New client dialogs for Postponement and Reboot require .NET Framework 4.5. This is a new prerequisite, which was not required by previous versions. If this is not feasible, consider downgrading to old dialogs by setting custom commands for both dialogs. Both executable files `postpone.exe` and `reboot.exe` are still available in their original location for backward compatibility.

System Requirements

RayManageSofti System Requirements

This section describes the compatibility of RayManageSofti 11.4. If installing any components of RayManageSofti on the same server, the version of that component must also be 11.4.

RayManageSofti Hardware Requirements

Basic Requirements

For devices running the Deployment Manager Administration Console or the Managed Device Selector

- Minimum screen resolution: 1024 x 768 pixels
- Minimum color settings: 8 bit (256 colors)

Core Servers

- Minimum RAM: 1 GB
- Recommended RAM: 8 GB or higher
- Minimum disk space: 1 GB

Reports Servers

- Minimum RAM: 2 GB
- Recommended RAM: 8 GB or higher
- Minimum disk space: 1 GB

Data Servers

- Minimum RAM: 2 GB
- Recommended RAM: 8 GB or higher
- Minimum disk space: 1 GB
 - Additional 40 GB for systems including OS Deployment Manager
 - Additional 30 GB for systems including Security Manager

Site Servers

- Minimum RAM: 1 GB
- Recommended RAM: 2 GB or higher
- Minimum disk space: 100 MB

Remote Console

- Minimum RAM: 1 GB
- Recommended RAM: 2 GB or higher
- Minimum disk space: 700 MB

Distribution Servers

- Minimum RAM: 1 GB
- Recommended RAM: 2 GB or higher
- Minimum disk space: 1 GB
 - Additional 20 GB for systems including OS Deployment Manager
 - Additional 30 GB for systems including Security Manager

Managed Devices

- Minimum RAM: 512 MB
- Recommended RAM: 1 GB or higher
- Minimum disk space: 300 MB

RayManageSofti Prerequisite Software

The table below describes the supported operating systems and software prerequisites of RayManageSofti 11.4 at the time of release.

Component	Operating system	Prerequisite software
Core Server	<ul style="list-style-type: none"> • Windows 2016 Server • Windows 2012 R2 Server • Windows 2012 Server • Windows 2008 R2 Server1 • Windows 2008 Server SP1-SP2 • Windows 2008 Server x64 SP1-SP21 	<ul style="list-style-type: none"> • .NET Framework 4.5.2 • Jre-7u45-windows-i586 x86 • Internet Explorer 7.0 to 11.0 • Microsoft Internet Information Services 6.0 to 8.5 <p>For OS Deployment Manager:</p> <ul style="list-style-type: none"> • Microsoft Windows Automated Installation Kit (WAIK) with WinPE 3.0 or 3.1 for Windows versions from XP to 7 • Windows Assessment and Deployment Kit (ADK) with WinPE 3.1 or later for Windows 8, 8.1, 10 • Microsoft Windows Deployment Services (WDS - required only if you intend to use PXE support) • Microsoft Sysprep
Remote Console	<ul style="list-style-type: none"> • Windows 2016 Server • Windows 2012 R2 Server • Windows 2012 Server • Windows 2008 R2 Server • Windows 2008 Server SP1-SP2 • Windows 2008 Server x64 SP1-SP2 • Windows 10 • Windows 10 x64 • Windows 8.1 	<ul style="list-style-type: none"> • .NET Framework 4.5.2 • Internet Explorer 7.0 to 11.0

	<ul style="list-style-type: none"> • Windows 8.1 x64 • Windows 8 • Windows 8 x64 • Windows 7 • Windows 7 x64 • Windows Vista • Windows Vista x64 	
Data Server	<ul style="list-style-type: none"> • Windows 2016 Server • Windows 2012 R2 Server • Windows 2012 Server • Windows 2008 R2 Server • Windows 2008 Server SP1-SP2 • Windows 2008 Server x64 SP1-SP2 	<ul style="list-style-type: none"> • SQL Server 2008 • SQL Server 2008 R2 with Reporting Services • SQL Server 2012 with Reporting Services • SQL Server 2014 with Reporting Services • SQL Server 2016 with Reporting Services • SQL Server Tools and Workstation Components 2005, SQL Server 2008, SQL Server 2012, SQL Server 2014 • Features: Client Tools Connectivity, Management Tools • .NET Framework 4.5.2
Reports Server	<ul style="list-style-type: none"> • Windows 2016 Server • Windows 2012 R2 Server1 • Windows 2012 Server1 • Windows 2008 R2 Server1 • Windows 2008 Server SP1-SP2 • Windows 2008 Server x64 SP1-SP21 	<ul style="list-style-type: none"> • .NET Framework 4.5.2 • Reporting Services (same release as the database) • Microsoft Internet Information Services 6.0 to 8.5
Site Server (OS Deployment Manager only)	<ul style="list-style-type: none"> • Windows 2012 R2 Server • Windows 2012 Server • Windows 2008 R2 Server 	<ul style="list-style-type: none"> • Windows Assessment and Deployment Kit (ADK) with WinPE 3.1 or later for Windows 8, 8.1, 10



	<ul style="list-style-type: none">• Windows 2008 Server SP1-SP2• Windows 2008 Server x64 SP1-SP2 <p>Supported, but not recommended:</p> <ul style="list-style-type: none">• Windows 10• Windows 10 x64• Windows 8.1• Windows 8• Windows 8 x64• Windows 7• Windows 7 x64• Windows Vista• Windows Vista x64	<ul style="list-style-type: none">• Microsoft Windows Deployment Services (WDS required only if you intend to use PXE support)
Managed Device	<ul style="list-style-type: none">• Windows 2016 Server• Windows 2012 R2 Server• Windows 2012 Server• Windows 2008 R2 Server Core• Windows 2008 R2 Server• Windows 2008 Server Core• Windows 2008 Server• Windows 2008 Server Core x64• Windows 2008 Server x64• Windows 10• Windows 10 x64• Windows 8.1• Windows 8.1 x64• Windows 8• Windows 8 x64• Windows 7• Windows 7 x64• Windows Vista	<ul style="list-style-type: none">• Internet Explorer 7.0 to 11.0 (Windows platforms only)• Java SE Runtime Environment (build 1.6.0) (Mac OS X only)

	<ul style="list-style-type: none"> • Windows Vista x64 • RedHat Linux 8 and 9 • RedHat Enterprise Linux 3, 4, 5, 6, 6.1 • SuSE Professional/OpenSuSE 9, 10, 11 • SuSE Enterprise Server (SLES) 9, 10, 11 • Mac OS X 10.8, 10.9, 10.10 • Windows XP2 • Windows XP x642 • Windows 2003 R2 Server2 • Windows 2003 R2 Server x642 • Windows 2003 Server2 • Windows 2003 Server x642 • Solaris 9, 10, 11 (Intel)2 • Solaris 8, 9, 10, 11 (SPARC)2 • CentOS 6.x, 7.x2 • Fedora 212 • AIX 5.2, 5.3, 6.1, 7.12 • HP-UX 11.00, 11i, 11i v2, 11iv32 	
Snapshot Wizard	<ul style="list-style-type: none"> • Windows 2016 Server • Windows 2012 R2 Server • Windows 2012 Server • Windows 2008 R2 Server • Windows 2008 Server • Windows 2008 Server x64 • Windows 10 • Windows 10 x64 • Windows 8.1 • Windows 8.1 x64 • Windows 8 	

	<ul style="list-style-type: none"> • Windows 8 x64 • Windows 7 • Windows 7 x64 • Windows Vista • Windows Vista x64 	
Distribution Server	<ul style="list-style-type: none"> • Windows 2016 Server • Windows 2012 R2 Server • Windows 2012 Server • Windows 2008 R2 Server Core • Windows 2008 R2 Server • Windows 2008 Server Core • Windows 2008 Server • Windows 2008 Server Core x64 • Windows 2008 Server x64 <p>Supported, but not recommended:</p> <ul style="list-style-type: none"> • Windows 10 • Windows 10 x64 • Windows 8.1 • Windows 8.1 x64 • Windows 8 • Windows 8 x64 • Windows 7 • Windows 7 x64 	<ul style="list-style-type: none"> • Jre-7u45-windows-i586 x86
Inventory	<ul style="list-style-type: none"> • Windows 2016 Server • Windows 2012 R2 Server • Windows 2012 Server • Windows 2008 R2 Server Core • Windows 2008 R2 Server • Windows 2008 Server Core • Windows 2008 Server 	<ul style="list-style-type: none"> • Java SE Runtime Environment (build 1.6.0) (Mac OS X only)

- Windows 2008 Server Core x64
- Windows 2008 Server x64
- Windows 2003 R2 Server
- Windows 2003 R2 Server x64
- Windows 2003 Server SP2
- Windows 2003 Server x64 SP2
- Windows 10
- Windows 10 x64
- Windows 8.1
- Windows 8.1 x64
- Windows 8
- Windows 8 x64
- Windows 7
- Windows 7 x64
- Windows Vista
- Windows Vista x64
- Windows XP Professional
- Windows XP Professional x64
- Windows XP Home

- RedHat Linux 8 and 9
- RedHat Enterprise Linux 6.x, 7.x
- CentOS 6.x, 7.x
- Fedora 21
- SuSE Professional/OpenSuSE 9, 10, 11
- SuSE Enterprise Server (SLES) 9, 10, 11
- Solaris 9, 10, 11 (Intel)
- Solaris 8, 9, 10, 11 (SPARC)
- Mac OS X 10.8, 10.9, 10.10
- AIX 5.2, 5.3, 6.1, 7.1

-
- | | | |
|--|--|--|
| | <ul style="list-style-type: none">• HP-UX 11.00, 11i, 11i v2, 11i v3 | |
|--|--|--|
-

**Warning:**

Managed devices with operating systems which use OpenSSH 6.9 or higher are not supported!

¹ Requires IIS to run in 32 bit mode

² Advanced support

RayVentory System Requirements

This section describes the compatibility of RayVentory 11.4.

RayVentory Hardware Requirements

RayVentory Server

- Minimum RAM: 2 GB
- Recommended RAM: 8 GB or higher
- Minimum disk space 8 GB

RayVentory Server (1 - 4.000 devices)

- Dual Core CPU
- 8 GB RAM
- 60 GB disk space for OS
- 40 GB disk space for database

RayVentory Server (4.001 - 10.000 devices)

- Dual Core CPU
- 16 GB RAM
- 60 GB disk space for OS
- 100 GB disk space for database

RayVentory Portal

- Minimum RAM: 2 GB
- Recommended RAM: 4 GB or higher
- Minimum disk space: 2 GB

RayVentory Prerequisite Software

The table below describes the supported operating systems and software prerequisites of RayVentory 11.4 at the time of release.

Component	Operating system	Prerequisite software
RayVentory Server	<ul style="list-style-type: none"> • Windows 2016 Server • Windows 2012 R2 Server • Windows 2012 Server • Windows 2008 R2 Server x64 • Windows 2008 Server x86 SP2 • Windows 2008 Server x64 SP2 	<ul style="list-style-type: none"> • .NET Framework 4.5.2 • PowerShell 3 • SQL Server 2008 - 2016 Express or higher edition • Microsoft Internet Information Services 6.0 to 8.5
RayVentory Portal	<ul style="list-style-type: none"> • Windows 2016 Server • Windows 2012 R2 Server • Windows 2012 Server • Windows 2008 R2 Server x64 • Windows 2008 Server x86 SP2 • Windows 2008 Server x64 SP2 • Windows 10 • Windows 10 x64 • Windows 8.1 • Windows 8.1 x64 • Windows 8 • Windows 8 x64 • Windows 7 • Windows 7 x64 	<ul style="list-style-type: none"> • .NET Framework 4.5.2
RayVentory for OS Inventory (Agentless inventory)	<ul style="list-style-type: none"> • Windows 2016 Server • Windows 2012 R2 Server • Windows 2012 Server • Windows 2008 R2 Server 	<ul style="list-style-type: none"> • Internet Explorer 7.0 to 11.0 (Windows platforms only) • Java SE Runtime Environment (build 1.6.0) (Mac OS X agent inventories only)

	<p>Core</p> <ul style="list-style-type: none">• Windows 2008 R2 Server• Windows 2008 Server Core• Windows 2008 Server• Windows 2008 Server Core x64• Windows 2008 Server x64• Windows 10• Windows 10 x64• Windows 8.1• Windows 8.1 x64• Windows 8• Windows 8 x64• Windows 7• Windows 7 x64• Windows Vista• Windows Vista x64• RedHat Linux 8 and 9• RedHat Enterprise Linux 3, 4, 5, 6, 6.1• SuSE Professional/ OpenSuSE 9, 10, 11• SuSE Enterprise Server (SLES) 9, 10, 11• Mac OS X 10.8, 10.9, 10.10• Windows XP• Windows XP x64• Windows 2003 R2 Server• Windows 2003 R2 Server x64• Windows 2003 Server• Windows 2003 Server x64• Solaris 9, 10, 11 (Intel)• Solaris 8, 9, 10, 11 (SPARC)• CentOS 6.x, 7.x	
--	---	--

	<ul style="list-style-type: none"> • Fedora 21 • AIX 5.2, 5.3, 6.1, 7.1 • HP-UX 11.00, 11i, 11i v2, 11iv3 	
RayVentry for vSphere Inventory	vSphere Components <ul style="list-style-type: none"> • VMware ESX Server 3.0 and higher • VMware ESXi Server • VMware vCenter Server 	<ul style="list-style-type: none"> • .NET Framework 4.5.2
RayVentry for Oracle Inventory	Database Components <ul style="list-style-type: none"> • Oracle Database 9i • Oracle Database 10g • Oracle Database 11g • Oracle Database 12c 	<ul style="list-style-type: none"> • Java Runtime 1.4.2 - Java 8 • Any operating system supporting Oracle JRE


Warning:

Managed devices with operating systems which use OpenSSH 6.9 or higher are not supported!

Compatibility

This section describes the compatibility of RayManageSofti 11.4 . If installing any components of RayManageSofti on the same server, the version of that component must also be 11.4.

Compatible Components

Versions of distribution servers and managed devices that can be managed by Deployment Manager 11.4:

Component	Compatible versions
Deployment Manager for distribution servers	10.x
Deployment Manager for managed devices (Windows)	10.x
Deployment Manager for managed devices (Linux)	10.x
Deployment Manager for managed devices (Solaris)	10.x
Deployment Manager for managed devices (Mac OS X)	10.x
Deployment Manager for managed devices (AIX)	10.x
Deployment Manger for managed devices (HP-UX)	10.x

Versions of distribution servers and managed devices that can be managed by OS Deployment Manager 11.4 and Security Manager 11.4:

Component	Compatible versions
Deployment Manager for distribution servers	10.x
Deployment Manager for managed devices (Windows)	10.x

Upgrading from Earlier Releases

The last version before this release was 11.0; therefore, this upgrade path is regarded as the RayManageSofti/RayVentory standard upgrade procedure. To upgrade from releases earlier than 11.0, please consult your Raynet support representative.

Please note that the system requirements have changed since the last release. Make sure to meet the system requirements during each step of the migration process to ensure a stable system status at all times.

Additional Information

Information	Description
<u>Product Page</u>	Visit our product page for further information on RayManageSofti.
<u>Knowledge Base</u>	Take a look at the additional resources available at the Knowledge Base.
<u>Support Panel</u>	Please contact your Raynet service partner or use our Support panel to add your ideas or requirements to the RayManageSofti development roadmap.
<u>Download Page</u>	Simply download for further documentations.
<u>Newsletter Registration</u>	Our newsletter informs you about all important topics concerning our products and solutions as well as upcoming events and more.

RayManageSofti is part of the RaySuite

More information online
www.raynet.de



Raynet GmbH

Technologiepark 20
33100 Paderborn, Germany
T +49 5251 54009-0
F +49 5251 54009-29
info@raynet.de

www.raynet.de