



**RAYVENTORY**<sup>®</sup>

The most comprehensive  
Solution for Discovery and  
Inventory of Software  
and Hardware

Release Notes RayVentry  
Portal  
11.3



**Copyright © Raynet GmbH (Germany, Paderborn HRB 3524). All rights reserved.  
Complete or partial reproduction, adaptation, or translation without prior written permission is prohibited.**

Release Notes RayVentory Portal

Raynet and RayFlow are trademarks or registered trademarks of Raynet GmbH protected by patents in European Union, USA and Australia, other patents pending. Other company names and product names are trademarks of their respective owners and are used to their credit.

The content of this document is furnished for informational use only, is subject to change without notice, and should not be construed as a commitment by Raynet GmbH. Raynet GmbH assumes no responsibility or liability for any errors or inaccuracies that may appear in this document. All names and data used in examples are fictitious unless otherwise noted.

Any type of software or data file can be packaged for software management using packaging tools from Raynet or those publicly purchasable in the market. The resulting package is referred to as a Raynet package. Copyright for any third party software and/or data described in a Raynet package remains the property of the relevant software vendor and/or developer. Raynet GmbH does not accept any liability arising from the distribution and/or use of third party software and/or data described in Raynet packages. Please refer to your Raynet license agreement for complete warranty and liability information.

Raynet GmbH Germany  
See our website for locations.

[www.raynet.de](http://www.raynet.de)

---

## Table of Contents

<b>Introduction</b> .....	4
<b>What's New?</b> .....	5
<b>Resolved Issues</b> .....	10
<b>Known Issues</b> .....	11
<b>System Requirements</b> .....	12
Hardware Requirements .....	12
Prerequisite Software .....	12
<b>Additional Information</b> .....	16

# Introduction

RayVentory Portal provides a complete set of products for operating system (OS) inventory, as well as Oracle database, VMware vSphere / ESX, Hyper-V and SNMP inventory. The software includes components which perform:

- Discovery and import of devices and services,
- Agent based and agentless (remote execution, zero-touch) inventory,
- Interfaces for communication between clients and RayManageSoft / RayVentory Distribution and Administration Servers,
- PowerShell automation library to automate daily tasks,
- Task scheduler service to trigger inventories and other operations at specified intervals.

Simplified deployment, flexible configuration, and handful of different inventory methods wrapped in the user friendly interface of RayVentory Portal to provide flexibility for network administrators and IT managers with minimal impact on the existing infrastructure.

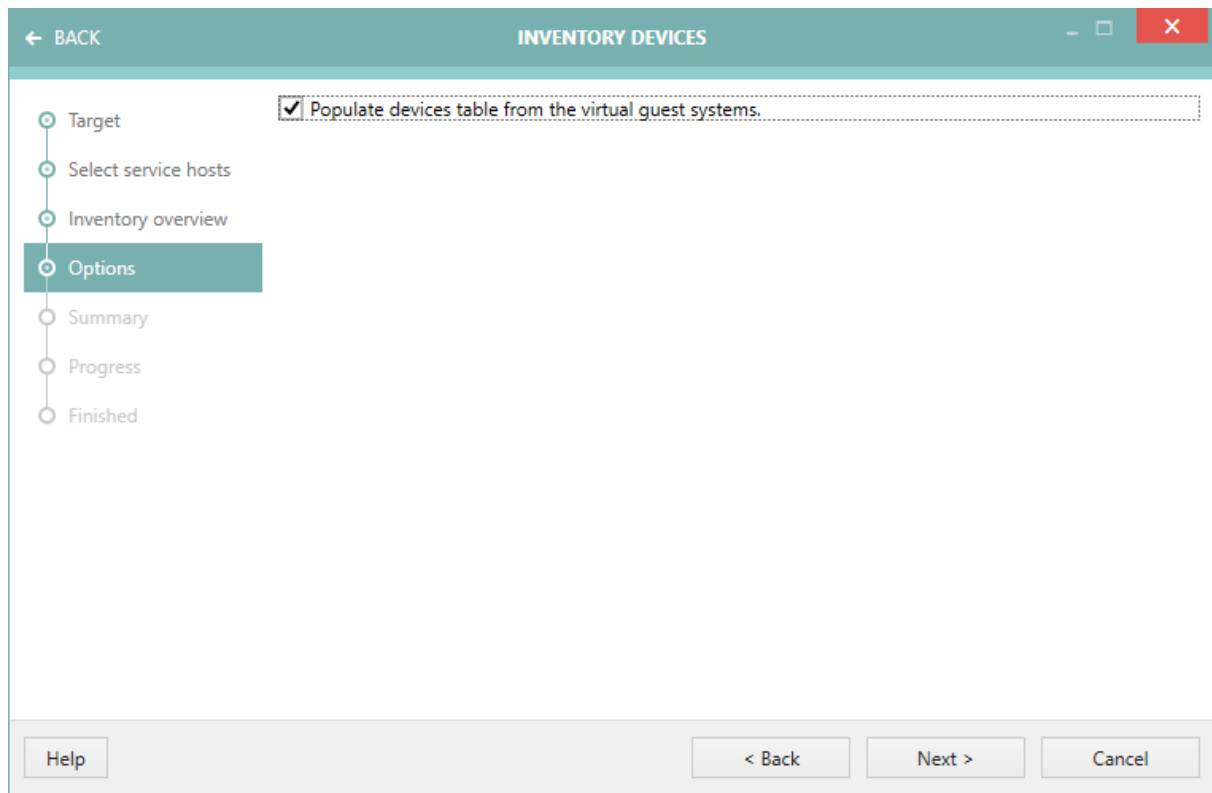
This new release 11.3 is a major upgrade to the previous release, which contains several major product improvements, new features, and resolved issues.

# What's New?

## Feature Highlights

### Automatic Creation of Connection Entries from vSphere Scan Results RVP-229

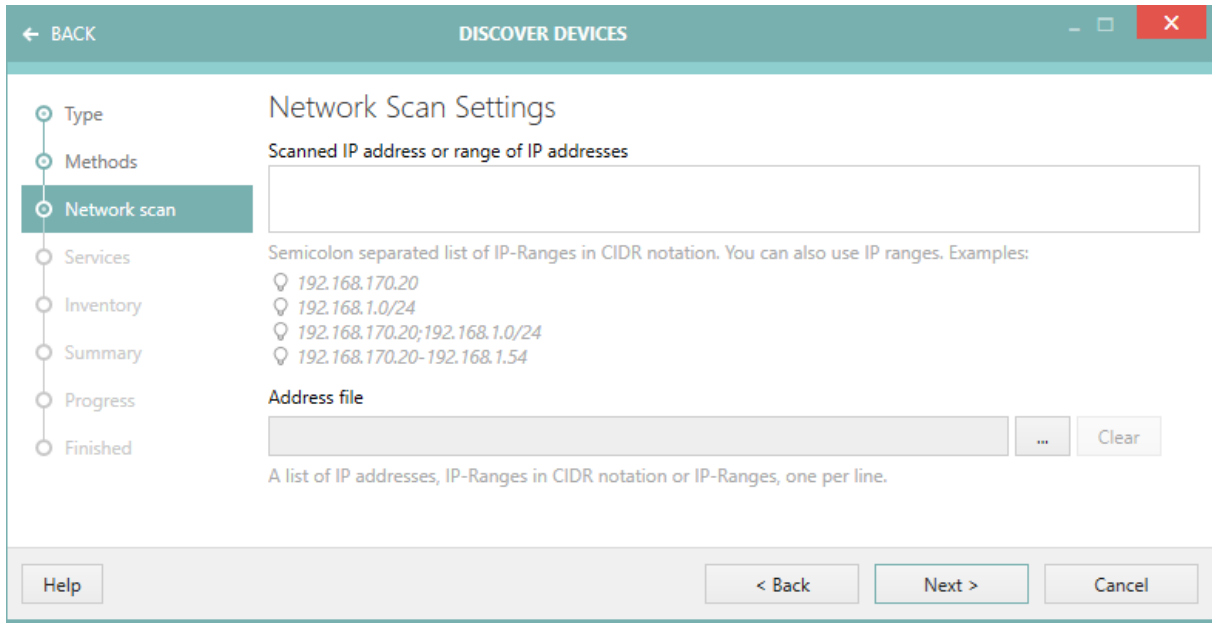
This is a new option to automatically create the connection entries from the vSphere scan results. This greatly simplifies the process of the discovery, because the accurate data coming from the vSphere instance makes it easy to find the devices, operating systems, and types, without a need to import from Active Directory or unnecessary network traffic (pinging and port scanning). Once the virtual machines have been discovered, they can be easily inventoried by using typical inventory methods, available directly from the *Inventory Wizard*.



It is now possible to enable a checkbox in order to create devices from virtual guest systems.

### Ability to Discover Devices from a File-based List of IP Addresses and Ranges RVP-302

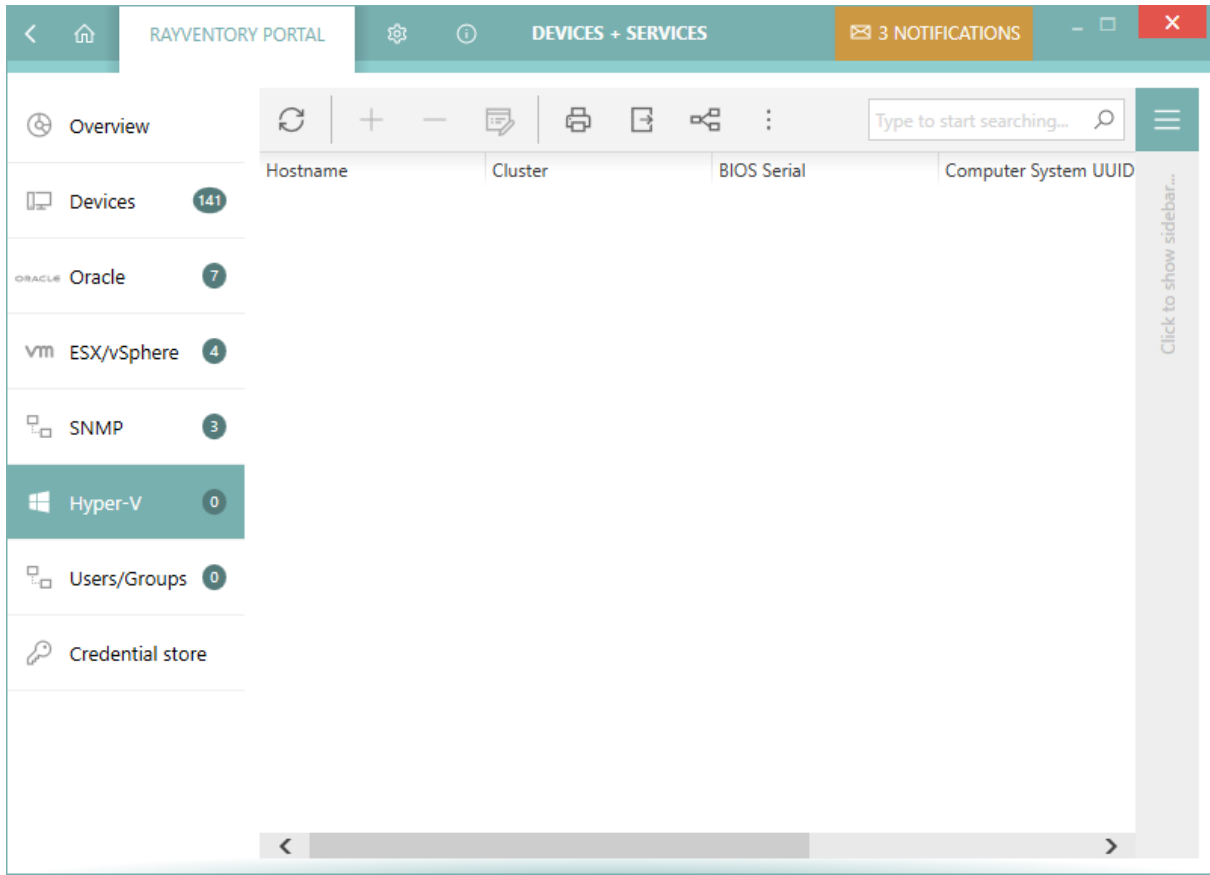
In previous versions, scanning for complex ranges of IP addresses required from the user to type them manually in. In this new release, we added an option to import the ranges from external files, which decreases the manual work required from the user.



Instead of a plain list of addresses, it is possible to select a source file instead.

### New Aggregated View and Details for Hyper-V Machines RVP-154

In this release we added a new tab **Hyper-V**. It shows data aggregated from the devices, but with more details tailored for Hyper-V. For example, it is possible to review the details and see the virtual machines running on a specific instance.



The left sidebar now contains the tow new features: Hyper-V and Users/Groups.

### Active Directory User and Group Management [RVP-154](#)

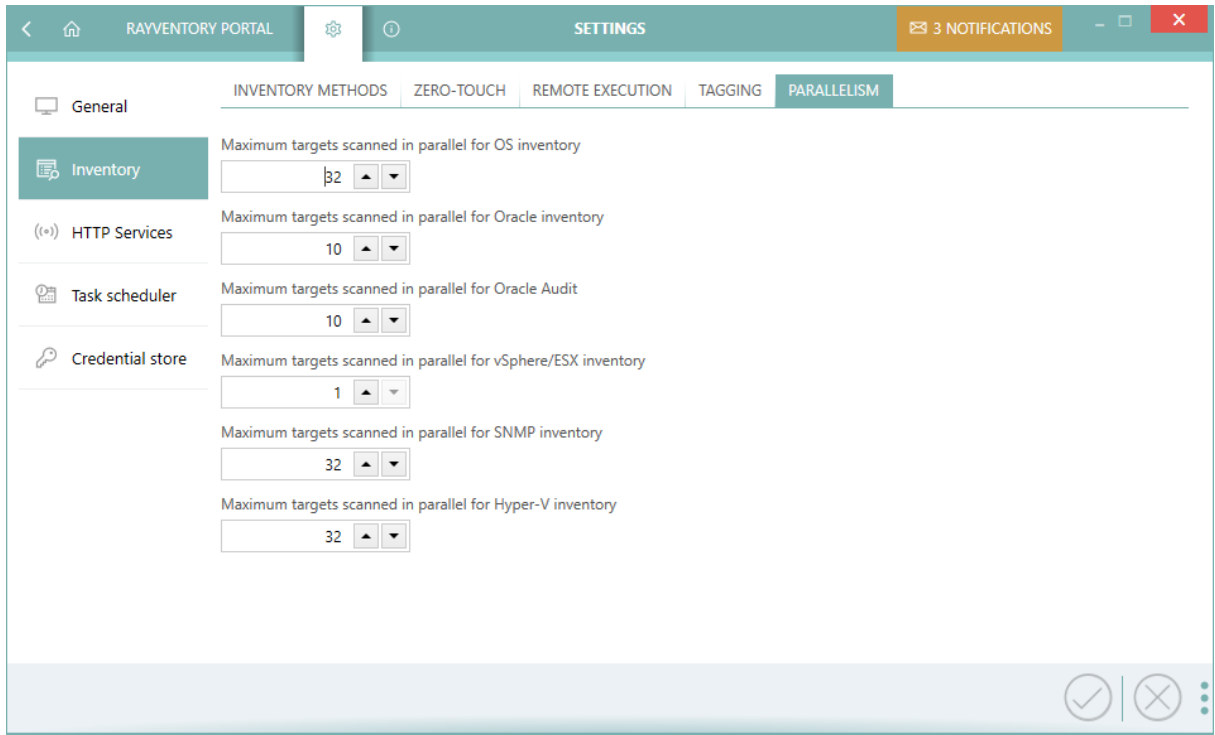
We added a new screen and wizards to import the data about Users and Groups from Active Directory. The data is also uploaded to parent RMSi/RV servers, making it possible to deliver an input for a complete asset and identity management.

### A File Scan for UNIX Inventory Is Now Available [RVP-226](#)

It is now possible to perform a file scan for Unix inventory.

### Parallelism Settings [RVP-246](#)

Several settings to control the number of active scans / tasks have been added. These can be used to add additional efficiency on powerful machines and to get a better performance / quality tradeoff on lower-end devices or in environments with a limited network load..



The new Settings screen which can be used to control the level of parallelism and the performance of various scans.



## Other New Features and Improvements

- **RVP-111** The display of timeout errors in the **Devices** pie chart has been improved (they should now be grouped under the **Timeout** category).
- **RVP-161** We improved remote scanning of UNIX machines that do not support various parameters of `sudo` (for example `-s, -k, -n, -h`).
- **RVP-206** It is now possible to customize the parameters passed to `ndtrack.sh` or `ndtrack.exe`.
- **RVP-207** The Oracle Discovery methods have been changed. The connection test now works without credentials.
- **RVP-208** The icon column in the **Recent** view has been improved in order to show different icons for Windows and Linux / UNIX devices.
- **RVP-211** The **Name** column in the **Oracle** and **vSphere** screens is now resizable.
- **RVP-214** It is now possible to enter empty pass phrases in the SSH Credentials editor.
- **RVP-244** We improved the performance of loading of vSphere details in the inventory viewer.
- **RVP-321** We added an extra check for settings to prevent saving "zero" values of the "Delay between connection test" option.
- **RVP-329** We improved the settings for extra logging options, that were previously not accepting files without extensions. Additionally, we improved our checks for the correctness of user input values.
- **RVP-335** Zero-touch scanning of AIX machines has been improved by capturing data on partitioning (LPAR) and to adjust the format to be compatible with the format of `ndtrack.*`.
- **RVP-341** We added an option to control whether pinging/port scanning of devices should be used to determine their type if it was not declared before.
- **RVP-369** We improved the memory consumption of the Scheduler.

# Resolved Issues

The following is the list of issues that have been resolved in RayVentory Portal in 11.3.

- **RVP-7** A problem where incorrect numbers were shown in the sidebar view in case of multi-selection of devices has been fixed.
- **RVP-188** A problem with `oratrack` running on JRE 1.4 has been fixed.
- **RVP-199** An issue resulting in unsupported methods being shown in the wizard even if they had been previously disallowed in the settings has been fixed.
- **RVP-200** A wrong description in the Oracle Import wizard has been fixed.
- **RVP-201** A problem with the Oracle view not refreshing when new items were being added has been fixed.
- **RVP-202** A problem which resulted in different scopes being reported by the Zero-Touch and the Remote-Execution inventory methods has been fixed.
- **RVP-203** A problem where values could have `null` values in the generated NDI files from a vSphere scan has been fixed. This caused troubles when importing them into the RMS / RV console.
- **RVP-205** The display of file contents in the RAW view in the NDI Inventory Viewer has been fixed.
- **RVP-209** Some issues in the Scheduled Tasks scheduler module have been fixed. They now run on time without any unplanned delays.
- **RVP-213** An issue which prevented the settings to open in case of non-standard migration of the credentials encryption key has been fixed.
- **RVP-220** A bug in the HTTP Upload Server which had a strong dependency on the English UI and names of build-in accounts has been fixed.
- **RVP-222** A `NullPointerException` on empty host arguments in RIW has been fixed and the HTTP Method has been changed to PUT for compatibility with the RVP and RMS default configuration.
- **RVP-224** Some incorrect labels for Oracle, ESX, and vSphere that were using a wording appropriate for computers have been fixed.
- **RVP-245** Some minor issues resulting in differences between `.ndi` files created by Zero-Touch and Remote-Execution scans have been fixed.
- **RVP-368** We fixed the results of scanning of Oracle Linux machines so that the results are compatible with `ndtrack` behavior, specifically for `Name`, `Caption` and `CSName` properties.
- **RVP-374** We fixed the import of `tnsnames.ora` where instead of both a single address or a list of addresses only a list was accepted.
- **RVP-376** We fixed a problem with Oracle inventory not working with custom encryption key.
- **RVP-380** We fixed a problem with IP address ranges where the initial and last IP address could be omitted from the scan.

## Known Issues

For a list known issues in RayVentory Portal refer to the Raynet [Knowledge Base](#). If there are any known issues, the respective information can be found here and will be kept up-to-date.

# System Requirements

## Hardware Requirements

This section lists the minimal hardware requirements for devices running RayVentory Portal.

### Minimal

- Screen resolution: 1024 x 768 pixels
- Color settings: 16 bit
- RAM: 2GB
- Disk space: 100MB

### Recommended

- Screen resolution: 1280 x 1024 pixels
- Color settings: 32 bit
- RAM: 4GB or higher
- Disk space: 1GB or more

**Note:**

The installation of the RayVentory Portal framework itself requires about 400MB of disk space. The amount of additional space needed depends on the size and number of incoming inventory results.

## Prerequisite Software

### General Prerequisites

The following operating systems are supported for the installation and running of RayVentory Portal at the time of release.

- Windows Vista
- Windows 7
- Windows 8
- Windows 8.1

- Windows 10
- Windows Server 2008 SP1-SP2
- Windows Server 2008 R2
- Windows Server 2012
- Windows Server 2012 R2
- Windows Server 2016

### **Required Software**

- .NET Framework 4.5.2

## **Operating System Inventory**

The following systems are supported:

- Windows 2016 Server
- Windows 2012 R2 Server
- Windows 2012 Server
- Windows 2008 R2 Server Core
- Windows 2008 R2 Server
- Windows 2008 Server Core
- Windows 2008 Server
- Windows 2008 Server Core x64
- Windows 2008 Server x64
- Windows 10
- Windows 10 x64
- Windows 8.1
- Windows 8.1 x64
- Windows 8
- Windows 8 x64
- Windows 7
- Windows 7 x64
- Windows Vista
- Windows Vista x64
- RedHat Linux 8 and 9
- RedHat Enterprise Linux 3, 4, 5, 6, 6.1

- SuSE Professional/OpenSuSE 9, 10, 11
- SuSE Enterprise Server (SLES) 9, 10, 11
- Mac OS X 10.8, 10.9, 10.10
- Windows XP
- Windows XP x64
- Windows 2003 R2 Server
- Windows 2003 R2 Server x64
- Windows 2003 Server
- Windows 2003 Server x64
- Solaris 9, 10, 11 (Intel)
- Solaris 8, 9, 10, 11 (SPARC)
- CentOS 6.x, 7.x
- Fedora 21
- AIX 5.2, 5.3, 6.1, 7.1
- HP-UX 11.00, 11i, 11i v2, 11iv3

### **Required Software**

- Java SE Runtime Environment (build 1.6.0) (Mac OS X agent inventories only)

### **VMware ESX/ESXi Inventory**

The following platforms are supported:

- VMware ESX Server 3.0 and higher
- VMware ESXi Server
- VMware vCenter Server

### **Oracle Inventory**

The following database components are supported:

- Oracle Database 9i
- Oracle Database 10g
- Oracle Database 11g
- Oracle Database 12c

---

## Required Software

- Java Runtime 1.4.2 - Java 10
- Any operating system supporting Oracle JRE

---

## Additional Information

Visit [www.raynet.de](http://www.raynet.de) for further information on RayVentory Portal, and take a look at the additional resources available at the Knowledge Base: <http://knowledgebase.raymanagesoft.com>.

Raynet is looking forward to receiving your feedback from your RayVentory Portal experience. Please contact your Raynet service partner or use our [Support Panel](#) to add your ideas or requirements to the RayVentory Portal development roadmap!

More information on RayVentory can be found in the *Release Notes with Technical Specifications* for RayVentory.



# RayVentory Portal is part of the RaySuite

More information online  
[www.raynet.de](http://www.raynet.de)



Raynet GmbH

Technologiepark 20  
33100 Paderborn, Germany  
T +49 5251 54009-0  
F +49 5251 54009-29  
[info@raynet.de](mailto:info@raynet.de)

[www.raynet.de](http://www.raynet.de)