



**RAYFLOW**<sup>®</sup>

Workflow  
Management

**Release Notes RayFlow 6.0**

RayFlow is part of RaySuite.

•**rayNET**

---

**Copyright © Raynet GmbH (Germany, Paderborn HRB 3524). All rights reserved.  
Complete or partial reproduction, adaptation, or translation without prior written permission is prohibited.**

Release Notes RayFlow RayFlow 6.0

Raynet and RayFlow are trademarks or registered trademarks of Raynet GmbH protected by patents in European Union, USA and Australia, other patents pending. Other company names and product names are trademarks of their respective owners and are used to their credit.

The content of this document is furnished for informational use only, is subject to change without notice, and should not be construed as a commitment by Raynet GmbH. Raynet GmbH assumes no responsibility or liability for any errors or inaccuracies that may appear in this document. All names and data used in examples are fictitious unless otherwise noted.

Any type of software or data file can be packaged for software management using packaging tools from Raynet or those publicly purchasable in the market. The resulting package is referred to as a Raynet package. Copyright for any third party software and/or data described in a Raynet package remains the property of the relevant software vendor and/or developer. Raynet GmbH does not accept any liability arising from the distribution and/or use of third party software and/or data described in Raynet packages. Please refer to your Raynet license agreement for complete warranty and liability information.

Raynet GmbH Germany  
See our website for locations.

[www.raynet.de](http://www.raynet.de)

---

## Table of Contents

<b>Introduction</b> .....	4
<b>What's New?</b> .....	5
RayFlow Server .....	7
RayFlow Client .....	10
<b>Resolved Issues</b> .....	11
RayFlow Server .....	11
RayFlow Client .....	12
<b>Migration</b> .....	13
RayFlow Server .....	13
RayFlow Client .....	19
<b>System Requirements</b> .....	20
RayFlow Server .....	20
RayFlow Client .....	21
<b>Additional Information</b> .....	22

# Introduction

This release of RayFlow 6.0 provides new features, as well as functional improvements and fixes for known issues from prior versions. RayFlow is available as a standalone product as well as it can serve as the backbone for the RaySuite Enterprise Solution.



Visit [www.raynet.de](http://www.raynet.de) for further information regarding the product and current community incentives.

Raynet is looking forward to receiving your feedback from your RayFlow experience. Please contact your Raynet service partner or write an e-mail to [sales@raynet.de](mailto:sales@raynet.de) to add your ideas or requirements to the RayFlow development road map!

# What's New?

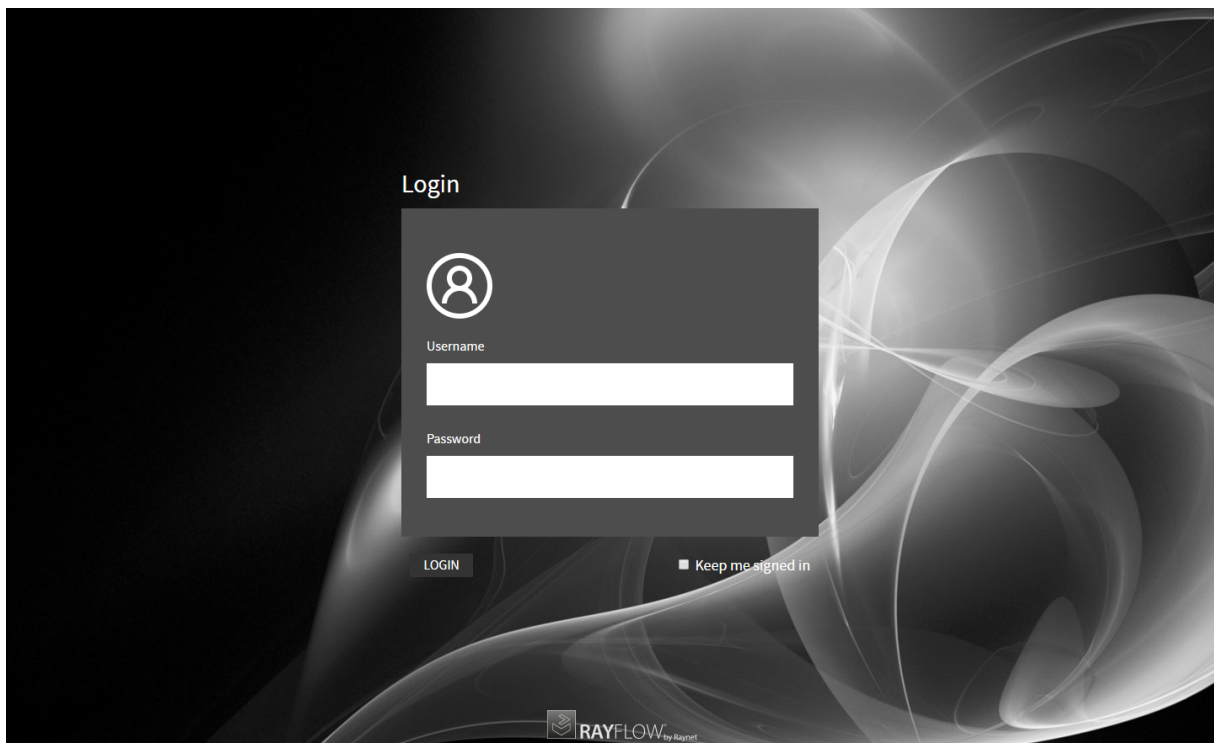
The following chapters contain an overview of the improvements, resolved issues, and the new features that are part of the new release of RayFlow 6.0.

## General

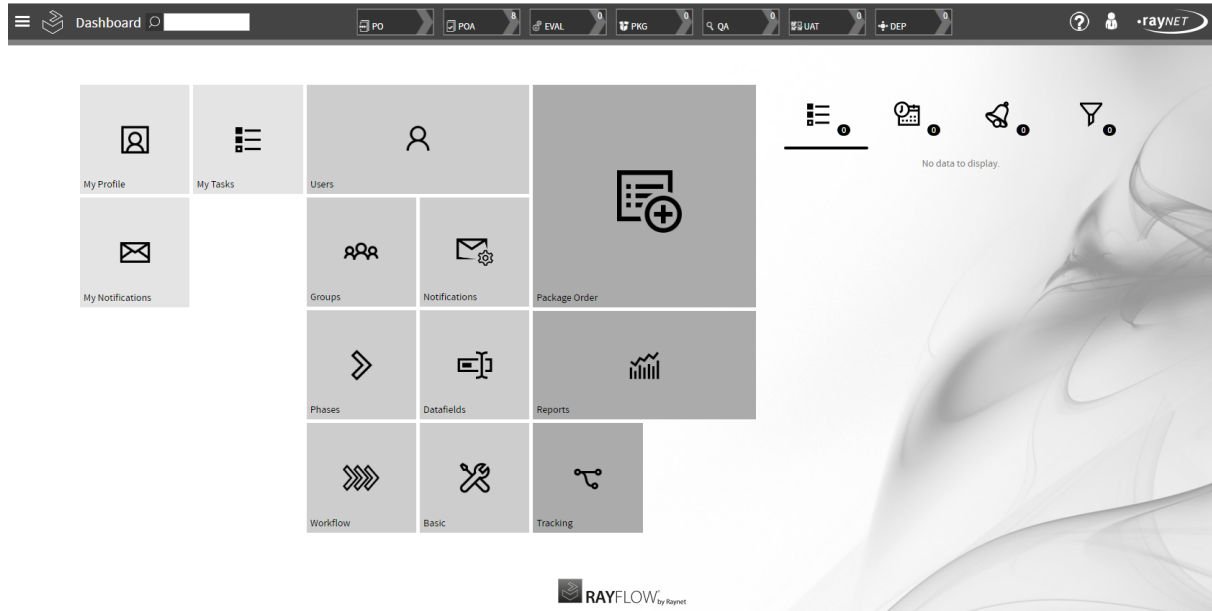
The following features and improvements affect both, RayFlow Server and RayFlow Client.

**The UI and the Dashboard of RayFlow Have Been Redesigned** RF-4351; RF-4359; RF-4382; RF-4383; RF-4384; RF-4390; RF-4393; RF-4398; RF-4399; RF-4409

RayFlow Server and RayFlow Client received an overhaul of the user interface. The new design now matches the design of the Packaging Suite products.



The new login screen in RayFlow 6.0.



The new Dashboard design in RayFlow 6.0.

## Other

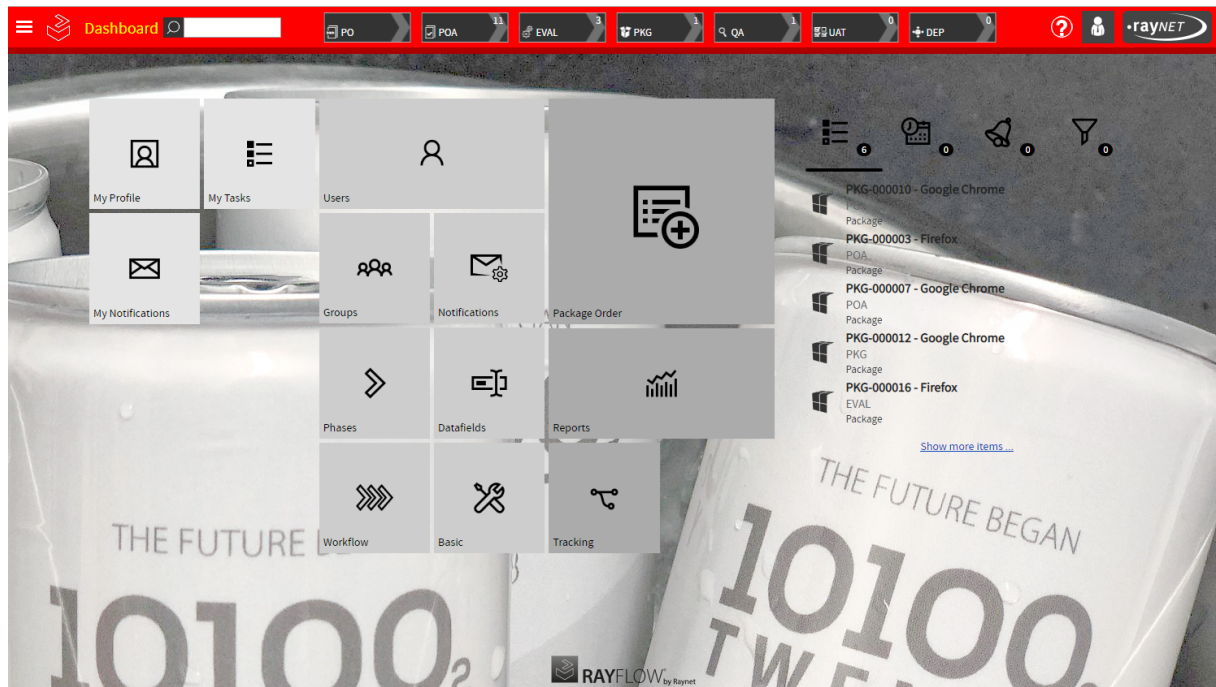
- RF-2989 The number of characters allowed for a multi-line datafield has been increased to 10.000 characters.
- RF-1243; RF-3892 The dropdown menu sort sequence for RayFlow Server and RayFlow Client has been improved.
- RF-4247 The layout for mandatory validation on multiline textboxes has been improved.
- RF-4410 The custom filters defined in **Tracking** are now shown on the **Dashboard**.
- RF-4402 DevExpress has been migrated to 18.2.5.
- RF-4483 The images and the background of the MSI installation has been updated.
- RF-4537 The command line tools for several RayPack Studio apps have been adjusted.
- RSC-590 Error reporting in case of an unsuccessful activation using the Activation Tool has been improved.

# RayFlow Server

This section highlights the new features and improvements which affect the RayFlow Server.

## The Customization Options of RayFlow Have Been Enhanced [RF-4432](#); [RF-4433](#); [RF-4450](#)

There are now even more possibilities to customize the layout of RayFlow to fit your corporate design. The options for customization are no longer limited to the **Login** page and can even be configured on a per project basis..



## A New User Interface for the Creation of New Task Is Now Available [RF-4396](#); [RF-4397](#)

The Package Order section of RayFlow has been improved and a new user interface which divides the creation of tasks into several steps has been added.



The first page of the new task order interface.

### Up to Five Tasks, Appointments, Notifications, and Filters Are Now Shown on the Profile Panel RF-4360

A maximum of up to five tasks, appointments, notifications, and filters are now shown on the profile panel. If the number of items exceeds five, a **Show more...** button is shown which will open the next five continuous items.



### Other

- RF-4050 Datafield values can now be linked to custom placeholders for the email templates.
- RF-4359 When creating a new project, the **Dashboard** will be set to the defaults.
- RF-4362 The tooltip for the **Link** button has been improved.
- RF-4365 A column chooser has been added to the **Linked Tasks** table.



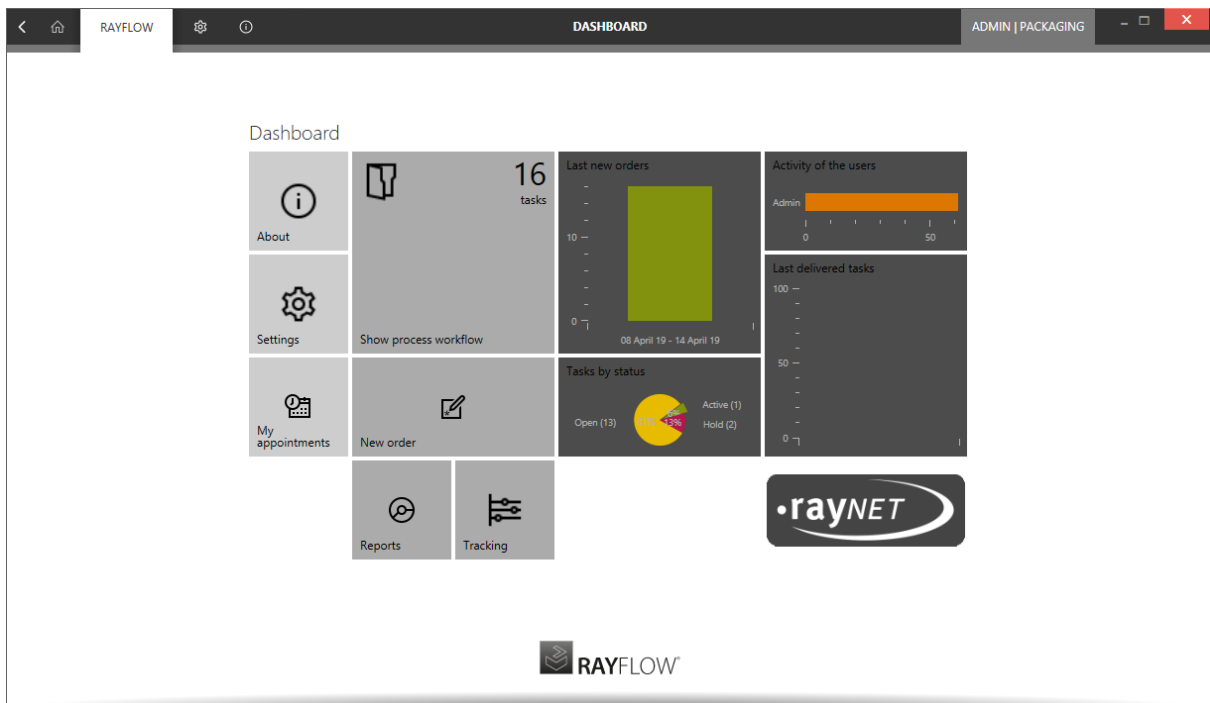
- RF-4366 It is now possible to copy the configuration of existing phases and use this configuration for new phases.
- RF-4367 A filter for task types has been added to the **Phase View** table.
- RF-4368 It is now possible to export reports directly from the **Phase View**.
- RF-4369 When cloning a task, it is now possible to choose which parts of the tasks will be cloned and which will be dropped.
- RF-4375 Datamapping for RayFlow has been extended.
- RF-4391; RF-4392 The Dashboard will now be set to the defaults when creating a new project.
- RF-4377 Notification filters which can filter for the task type have been added.
- RF-4412 The submenu entries for **Tracking** and **Package Order** have been combined into one main menu entry.
- RF-4413 Direct links for the navigation to **MyTasks**, **MyAppointments**, and **MyNotifications** have been added to the **Project Selection** view.
- RF-4422 The visibility of some of the icons in the tables has been improved.
- RF-4434 There have been minor transitions and style changes.

# RayFlow Client

This section highlights the new features and improvements which affect the RayFlow Client.

## The Design of RayFlow Client Received an Overhaul [RF-4418](#)

The Design of RayFlow Client has now been changed to match the RayFlow Server design.



The new design of the Dashboard of RayFlow Client.

## The Performance of the RayFlow Client Has Been Improved [RF-4435](#)

The performance of the RayFlow Client when loading projects has been vastly improved.

### Other

- [RF-1168](#) A button has been added which can be used to manually hide the phases and its sub-phases while in the **TASKS** view.
- [RF-3036](#) The unassign functionality is now disabled for their own tasks for users with edit rights.

# Resolved Issues

The following issues from the previous version of RayFlow have been resolved in this release.

## General

The following issues which affected both, RayFlow Server and RayFlow Client have been resolved in the latest version.

- RF-4270 The path configuration has been extended to match the standard RayPack Studio paths.
- RF-4273 RayFlow arguments are now imported into RayEval in the correct form.
- RF-4411 The task status images are now available in the **POA** table.
- RF-4419 The status icons are now available in the status drop-down menu.
- RF-4429 An issue where the properties could not be changed in the basic configuration has been resolved.
- RF-4430 A message will now be shown after a project has been copied.
- RF-4440 The menu items in the searchbar results have now the intended size.
- RF-4441 An issue has been resolved where the first element of the list was always deleted when deleting properties from the basic configuration.
- RF-4442 The **Project Selection** page has received a rework.
- RF-4446 The plugin parameter MultiSelect is now rendering correctly.

## RayFlow Server

The following issues have been resolved in the latest version of RayFlow Server.

- RF-3680 An issue where users without permissions to a report were able to access it from the **Dashboard** has been fixed.
- RF-4058 "." in a name is no longer replaced by "\_" when downloading files from a webDAV depot while using the Microsoft Edge browser.
- RF-4124 The **Project Manager** user can no longer perform project configuration actions in the demo **Packaging** project.
- RF-4201 The PackageStore page now loads if the server is connected via a proxy.
- RF-4203 Inactive options are no longer displayed in the dropdown list of multi-dropdown datafields.
- RF-4218 The software library path values on the **Basic > Deployment Settings** page now match the datafields included in the **Packaging** project.

- **RF-4361** The **Linked Tasks** element has been fixed and is now showing the correct mousepointer.
- **RF-4381** Error messages for the Package Store import have been fixed.
- **RF-4388** The file depot settings of the source project are no longer destroyed when executing when copying a project.
- **RF-4414** Flexboxes and grids are now shown correctly in the Internet Explorer 11.
- **RF-4424** The default tool configuration for RayQC Advanced has been fixed.
- **RF-4426** The correct error message is now shown when changing the status from the dropdown menu in the table view.
- **RF-4445** Plugins can now be saved after editing them in the **Edit** mode.
- **RF-4452** The correct menu entry of the left sidebar menu is now highlighted when navigating to **Package Order** and when selecting the first sub-menu entry of static pages.
- **RF-4484** The `Datetime` datafields were incorrectly saving and retrieving values resulting in the wrong time zones being persisted.
- **RF-4521** When the **Admin** user was listening to all events and any other user commented on a task that was assigned to the **Admin** user, no email was sent.
- **RSC-591** The activation tool was showing a generic RayPack Studio branding instead of a RayFlow branding when being started for RayFlow server.

## RayFlow Client

The following issues have been resolved in the latest version of the RayFlow Client.

- **RF-4113** An exception regarding extra long filenames has been fixed.
- **RF-4237** After closing the **Link more tasks** pop-up the **LINKED TASKS** tab will now be selected.
- **RF-4240** The status of foreign tasks can now be changed by privileged users.
- **RF-4256** The filename handling for filenames with special characters has been fixed.
- **RF-4263** There will no longer be an error message when successfully downloading files that contain special characters in the filename.

# Migration

This chapter of the document is meant to help users upgrade from their existing RayFlow version to RayFlow 6.0.

## RayFlow License

If the previously installed RayFlow version has been a version prior to 4.0, it will be necessary to activate the RayFlow using a new `.rs1` license file instead of the old `.license` files that were used previously to 4.0. In this case, reactivate your RayFlow license by using the license activation tool or contact the Support Team using our [Support templates](#). Information on how to reactivate a Raynet Product License can also be found in our [KnowledgeBase](#).

## RayFlow Server

### Migration from 1.x RayFlow Servers

If migrating from a 1.x RayFlow server to RayFlow 6.0, it is recommended to ask for the help of our consultants.

### Migration from 2.x RayFlow Servers or Higher to 6.0

#### 1. Make a Backup of the Current System

**(This step is optional but strongly recommended)**

##### A. Uninstall the previous version of RayFlow Server:

- Start the SQL Server Management Studio.
- Right-click on the existing RayFlow database and select **Task > Back Up** from the context menu.

##### B. Backup the file system:

- Go to the RayFlow Server Installation directory (`%INSTALLDIR%`).
- Right-click on the directory and select **Send To > Compressed Zip Folder**.
- Store the database and the file backups at a safe location.

**Note:**

The content of the previous related `web.config` file will later be needed for the edition of the new `web.config` file.

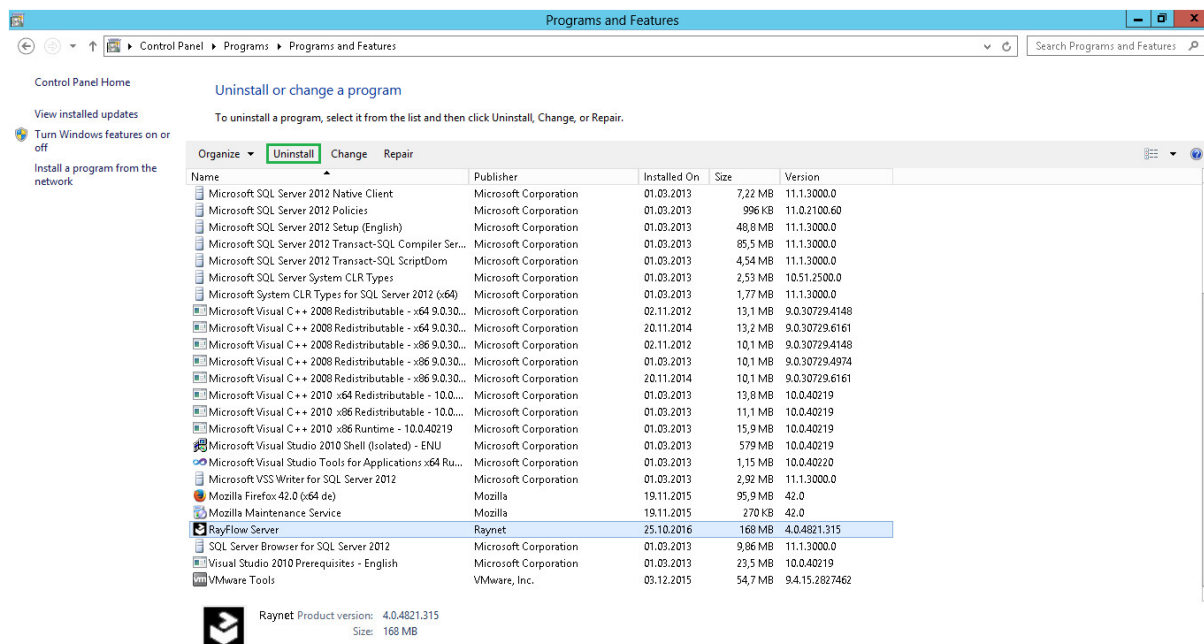
## 2. Uninstall the Previous RayFlow Server

**Warning:**

If step 1 has been skipped, make sure that the `web.config` file of the previous installation is kept available in a safe location.

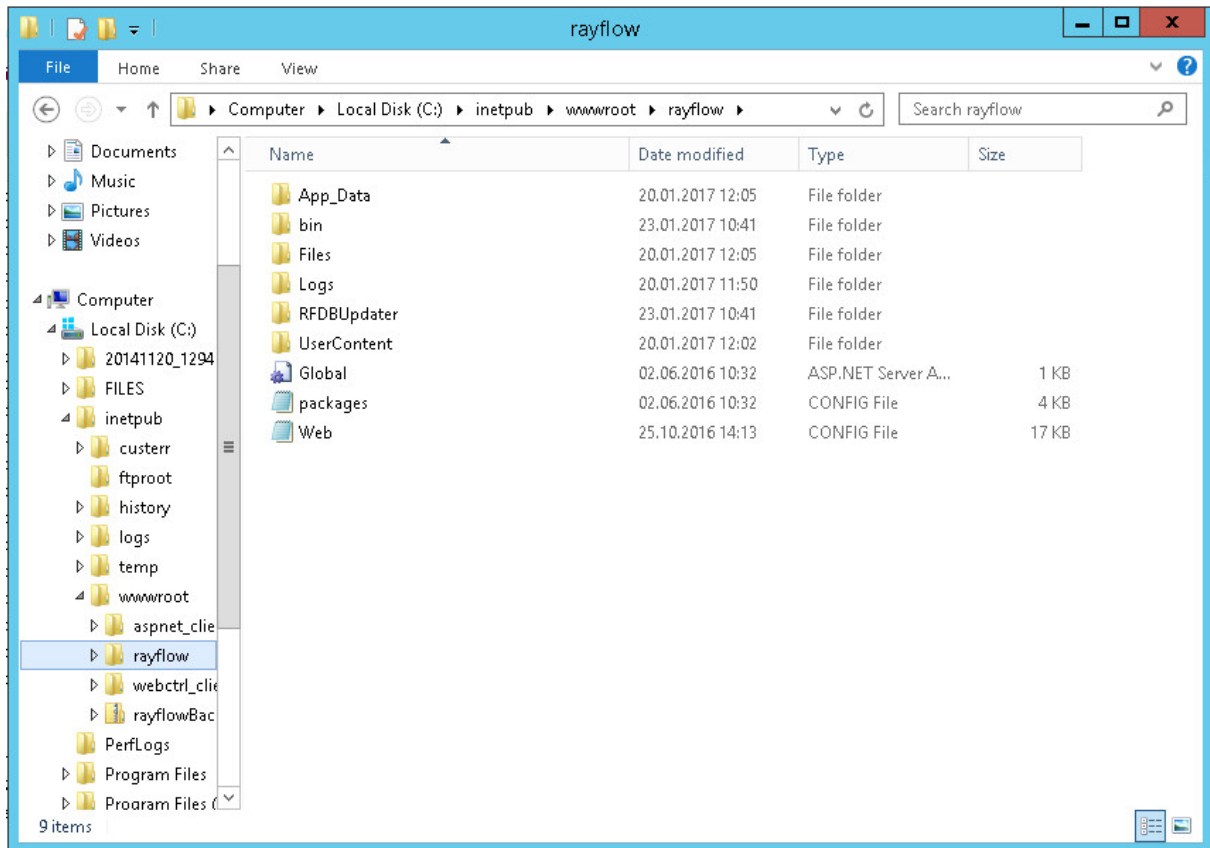
After the old `web.config` file has been saved uninstall the old version of RayFlow Server.

To uninstall RayFlow Server use the Windows Control Panel. In the **Uninstall or change a program** section, select the entry for RayFlow Server. Right-click on the entry and select **Uninstall** from the context menu.

**Be aware:**

Folders which contain customized data (icons, license files, files uploaded to tasks, etc.) will not be deleted by this action and will remain in the `%INSTALLDIR%` or in its subfolders.

In the screenshot below there is an example of data that will remain after uninstalling the old RayFlow Server.



### 3. Installation of RayFlow Server 6.0

Install the current version of the RayFlow Server to the %INSTALLDIR% folder using the MSI installer. Detailed information on how to install the new RayFlow Server can be found in the Server Installation Guide for RayFlow.



#### Warning:

Skip the database creation during the installation!

### 4. Edition of the New Web.config File

Open the `web.config` file which is located in the %INSTALLDIR% in a text editor and replace the connection string with the connection string of the old `web.config` file (see either the first or the second step). Save the changes to the new `web.config` file.

Example:

```
<!-- Your connectionstring -->
<connectionStrings>
  <add name="RayflowEntities"
    connectionString="Data Source=(local);Initial Catalog=Rayflow;Integrated
    Security=True;MultipleActiveResultSets=True;App=EntityFramework"
    providerName="System.Data.SqlClient"/>
</connectionStrings>
```

## 5. Upgrade the RayFlow Database

The database needs to be updated using the RayFlow-Updater. This is a simple console program which contains the four parameters which are necessary to update the RayFlow database to the latest state without the use of SQL scripts.

```
rfDBUpdater.exe -path %INSTALLDIR%\RFDBUpdater\ -upgrade -wait
```

The application itself is located in the following directory of the RayFlow Server installation: %INSTALLDIR%\RFDBUpdater\

**Example of how to launch an update from a local folder:**

```
rfDBUpdater.exe -upgrade -wait
```

**Example of how to launch an update from any folder:**

```
rfDBUpdater.exe -path %INSTALLDIR%\RFDBUpdater\ -upgrade -wait (with full path %
INSTALLDIR%)
```



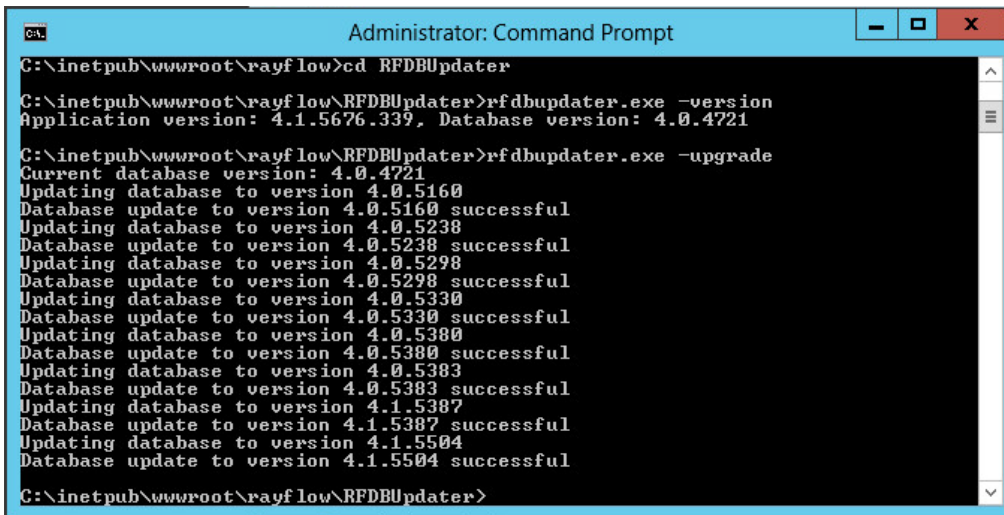
**List of Arguments:**

-path: The path containing the RayFlow Server installation. It is necessary for the Database/Connection string which will be taken from the `web.config` in the given path. At the same time, the path is the address of the SQL Scripts folder which also resides in the same folder. The path can be omitted if the command is launched from the RayFlow Server installation folder.

-upgrade: Using this parameter will update the database to the latest state.

-version: Get the current version of RayFlow.

-wait: Wait for a key action.



```
C:\inetpub\wwwroot\rayflow>cd RFDBUpdater
C:\inetpub\wwwroot\rayflow\RFDBUpdater>rfdbupdater.exe -version
Application version: 4.1.5676.339, Database version: 4.0.4721
C:\inetpub\wwwroot\rayflow\RFDBUpdater>rfdbupdater.exe -upgrade
Current database version: 4.0.4721
Updating database to version 4.0.5160
Database update to version 4.0.5160 successful
Updating database to version 4.0.5238
Database update to version 4.0.5238 successful
Updating database to version 4.0.5298
Database update to version 4.0.5298 successful
Updating database to version 4.0.5330
Database update to version 4.0.5330 successful
Updating database to version 4.0.5380
Database update to version 4.0.5380 successful
Updating database to version 4.0.5383
Database update to version 4.0.5383 successful
Updating database to version 4.1.5387
Database update to version 4.1.5387 successful
Updating database to version 4.1.5504
Database update to version 4.1.5504 successful
C:\inetpub\wwwroot\rayflow\RFDBUpdater>
```

**Note:**

If any errors are reported, please contact the support team.

## 6. Manual Configuration

(The necessity of these steps depends on the environment.)

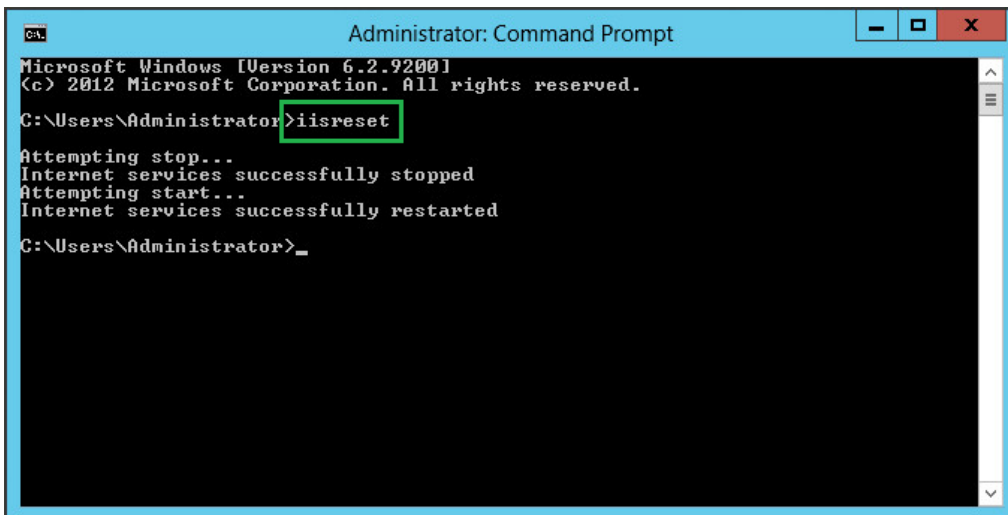
### Internet Information Services (IIS) restart

Restart the Internet Information Services either using the Internet Information Services Manager or via Command Prompt using the `iisreset` command line.

## Internet Information Services Manager:



## "iisreset" command line:



```
Administrator: Command Prompt
Microsoft Windows [Version 6.2.9200]
(c) 2012 Microsoft Corporation. All rights reserved.
C:\Users\Administrator>iisreset
Attempting stop...
Internet services successfully stopped
Attempting start...
Internet services successfully restarted
C:\Users\Administrator>_
```

# RayFlow Client

## Upgrading the RayFlow Application

### General upgrade preparations

RayFlow 6.0 is delivered as an MSI software package. In order to install it safely:

1. Download the MSI package for RayFlow 6.0 from the Raynet resource repositories.  
(If you have not already received credentials, please contact the Raynet support team via [support@raynet.de](mailto:support@raynet.de) to get them via email)
2. Copy all files that need to be kept for later reuse or look-up (such as `RayFlow.exe.config` for proxy settings, `dashboard.xml`)
3. Execute the RayFlow 6.0 MSI package and work yourself through the setup routine.

### Adjusting the newly installed RayFlow instance

1. Define config files and settings according to the old system state.
2. Launch RayFlow.
3. If there are issues regarding broken or missing functionality, please feel free to contact the Raynet support team via [support@raynet.de](mailto:support@raynet.de).

# System Requirements

## RayFlow Server

### Hardware Requirements

#### Minimal

- Minimum disk space required: 120 GB
- Minimum RAM required: 1GB
- Pentium 4, 2.4 GHz Processor
- Network 100Mbit

#### Recommended

- CPU Intel Core i5 or i7
- 8GB RAM
- Disc Space: 500 GB RAID 10 (4x250GB)
- Network 100Mbit

### Prerequisite Software

The following are the minimum software requirements for the installation and running of RayFlow 6.0.

- Windows Server 2008 SP2 or higher
- Microsoft SQL Server 2008 or higher
- IIS 7 or higher
- .NET 3.5 for SQL Server
- .NET 4.5

**Note:**

Minimum server requirement for .NET Framework 4.5 is Windows Server 2008 SP2. Further information on system requirements for .NET Framework 4.5, can be found under the following link: <https://msdn.microsoft.com/en-us/library/8z6watww%28v=vs.110%29.aspx>

- Microsoft Report Viewer Runtime (Required to view SSRS Reports)

Please refer to the following links for system requirements related to different versions of Microsoft Report Viewer Runtime

#### **Microsoft Report Viewer 2012 Runtime**

<http://www.microsoft.com/en-us/download/details.aspx?id=35747>

#### **Microsoft Report Viewer Redistributable 2008**

<http://www.microsoft.com/en-us/download/details.aspx?id=577>

- Crystal Report Runtime 2010 13.0.14 (Only required if Crystal Reports are used for reporting)

#### **Supported internet browsers:**

- Microsoft Internet Explorer™ version 9.0 and newer
- FireFox version 3 and newer
- Chrome
- Microsoft Edge
- It is recommended to use a screen resolution of at least 1024x768 pixels.
- Although other browsers might work they are not officially recommended.

## RayFlow Client

### Hardware Requirements

#### Minimal

- Screen resolution: 1024 x 768 pixels
- Color settings: 16 bit
- RAM: 2GB
- Disk space: 10GB

#### Recommended

- Screen resolution: 1280 x 1024 pixels
- Color settings: 32 bit
- RAM: 4GB or higher
- Disk space: 100GB or more

# Additional Information

Further information regarding RayFlow can be found in several resources which are available.

- The *Operations Supplement* provides information about third-party software and libraries redistributed with RayFlow.
- The *Administration and Configuration Guide* provides detailed information about RayFlow Server.
- The *Installation Guide* provides detailed information on how to setup a RayFlow server instance.
- The *User Guide* provides information for user of the RayFlow client.
- The product website <https://raynet.de/en/Raynet-Products/RayFlow> provides information about the product, news, and support.
- Raynet and its partners offer a range of training courses that can also be customized to meet your requirements. For more information on these courses, speak with your Raynet consultant or contact the Raynet Sales department via [sales@raynet.de](mailto:sales@raynet.de).



Raynet GmbH

Technologiepark 20  
33100 Paderborn, Germany  
T +49 5251 54009-0  
F +49 5251 54009-29  
[info@raynet.de](mailto:info@raynet.de)  
[support@raynet.de](mailto:support@raynet.de)

[www.raynet.de](http://www.raynet.de)