

RMS UEM 3.1

3.1.3018.767 [Update 11]

Released on Jan 17, 2025

Resolved issue

Agent version identification is now more robust and does not depend on the presence or absence of the RMS UEM AppCenter. Previously this caused problems as removing the AppCenter application on MacOS rendered this mechanism ineffective. In this release, RMS UEM can read the package information correctly to address this shortcoming.

Please note that this issue only affects customers who choose to remove RMS UEM AppCenter from their MacOS endpoints. [RDEP-89](#)

3.1.3012.762 [Update 10]

Released on Oct 11, 2024

UEM Agent is now a native Apple Silicon app [RMSC-2670](#) [ZEN-28046](#)

We're excited to announce a significant performance upgrade for UEM AppCenter on macOS. Previously, the complete agent was emulated on macOS systems. Now, we've compiled it to run natively on Apple Silicon processors. This optimization brings improved speed, efficiency, and battery life for users with M1 and M2 Macs. The native support also ensures a smoother experience and better integration with the latest Apple hardware.

Other improvements

- Improved opening of details dialogs on postponable packages on macOS. [RMSC-2687](#)
- Improved package status updates in the RMS UEM AppCenter on macOS. [RMSC-2694](#)
- Improved postponable package information in the RMS UEM AppCenter on macOS. [RMSC-2686](#)

Resolved issues

- Resolved issues with incomplete inventory raw data information, where applications with the same name and version but different installation directory/path were incorrectly detected. [RMSC-2760](#)
 - This release fixes several issues with the MacOS Agent. Fixes include
 - Resolved wrong direct installation of optional packages. [RMSC-2700](#)
 - Resolved issues with reinstalling uninstalled postponable packages. [RMSC-2689](#)
 - Resolved issues with self-heal on empty packages where the run commands were executed even though their scope was limited to the initial installations. [RMSC-2734](#)
 - Resolved issues with RMS UEM AppCenter crashing when RMS UEM Server was unavailable. [RMSC-2071](#)
 - Resolved issues with superfluous installation log entries for inapplicable packages. [RMSC-2681](#)
 - Resolved issues with upgrading packages on MacOS where the same package would not install correctly after upgrading the package version unless a subsequent policy update was triggered. [RMSC-2344](#)
 - Resolved issues with uninstalling packages using `ndlaunch`. [RMSC-2535](#)
-

3.1.3007.759 [Update 9]

Released on Aug 16, 2024

Resolved issues

- Optional packages will now automatically upgrade when a new version is assigned. **RMSC-2442** **ZEN-28222**

3.1.3005.758 [Update 8]

Released on Aug 16, 2024

Resolved issues

- Resolved issues with unpredictable behavior of the macOS agent, where certain operations (such as closing a laptop lid) could cause policies to stop updating or inventory files to stop being sent. For more granular control, a configurable global timeout setting has been added, and actions executed by the JVM have a default timeout of one hour, so that these events are resolved as quickly as possible. **RMSC-2305** **ZEN-26793** **ZEN-27004** **ZEN-27188** **ZEN-27208**

3.1.2999.752 [Update 7]

Released on Jun 17, 2024

Resolved issues

- Enhanced RMS UEM AppCenter resilience. Corrupted files will not longer cause the crashing of the AppCenter. **RMSC-2534**
- Finalized support for `EffectiveFrom` and `EffectiveUntil` policy properties in AppCenter to correctly hide assigned packages not in the defined interval. **RMSC-2343**
- Resolved profile selection when an installation of a package is started from within the RMS UEM AppCenter. **RMSC-2598**

3.1.2995.748 [Update 6]

Released on Apr 30, 2024

Resolved issues

- On the frontend docker image the embedded 7z application was updated to version `24.00` to support a new compression format for parsing `.dmg` files. **RMSC-2256**
- Improved SQL Server connectivity, to circumvent random issues of type `System.Data.SqlClient.SqlException (0x80131904): Timeout expired.` **RMSC-2569**

3.1.2991.746 [Update 5]

Released on Apr 17, 2024

Resolved issues

- Improved SQL Server connectivity, to circumvent random issues of type `System.Data.SqlClient.SqlException (0x80131904): Timeout expired.` **RMSC-2569**

- Improved the way RMS UEM identifies which packages are installed on managed devices. This fixes an issue where, in some cases, the installation state was not updated correctly. **RMSC-2567**
-

3.1.2987.745 [Update 4]

Released on Mar 28, 2024

Resolved issues

- Fixed an issue in the RayVentoryServer integration that could cause timeout problems during the connection test. Both values `Timeout` and `MaxAttempts` can now be configured similar to the Catalog integration. **RMSC-2562**

Migration notes

If you are migrating from a previous version, be sure to set defaults for new properties. For example, if the original container setup was created using Docker Compose, make sure to add the following lines to the environment configuration file:

```
1 Integration__RayVentoryServer__Timeout = 200000
2 Integration__RayVentoryServer__MaxAttempts = 2
```

Finally, re-create the RayVentory Server integration in your tenant after the update is applied.

3.1.2984.743 [Update 3]

Released on Mar 11, 2024

Resolved issues

- Resolved an issue in the software normalization module that could cause duplicate entries to be displayed for a single raw software evidence in the Products tab. **RMSC-2538**
 - **DATA HUB** Improved performance of the API and Data Hub connector accessing the RayManageSoft UEM data. **RMSC-2414**
 - Note: This change requires the Data Hub Agent / RMS UEM Connector to be updated.
 - Resolved reporting issues with child relation data. **RMSC-2461**
 - Resolved reporting inconsistencies in version-level support status assessment. **RMSC-2371**
-

3.1.2976.742 [Update 2]

Released on Mar 4, 2024

Resolved issues

This release addresses issues with the import functionality from Azure Active Directory **RMSC-2547**. In addition to improved overall performance, the following reported issues have been fixed:

- Resolved an issue where groups were incomplete after the import process.
- Resolved an issue with incorrect Azure identifiers for merged devices.
- Resolved issues with the synchronization of group relationships between RayManageSoft UEM and Azure Active Directory.

3.1.2974.741 [Update 1]

Released on Feb 21, 2024

Resolved issues

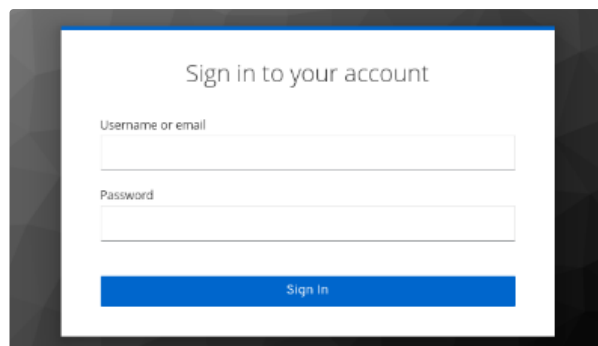
- Fixed an issue where the changes to the advanced package configuration could not be persisted when switching to another (not-default / latest) version. In this version, user settings are persisted and correctly restored upon switching to another version. **RMSC-2537**
- Fixed an issue that could cause inconsistent search results in the Package Store when changing the desired operating system platform. **RMSC-2478**
- Fixed an issue where duplicates of packages present on the initial Package Store screen could be displayed in the list. **RMSC-2340**
- Improved handling of Package Store packages whose versions do not follow a standard version format. This problem affected a number of popular packages, including but not limited to preview versions or any version strings that contained additional meta information (e.g. GIT commit identifiers or parts thereof). From this release, such packages will be handled correctly by the packaging module. **RMSC-2536 RMSC-2518 RMSC-2339 ZEN-26324 ZEN-25490**
- Fixed an issue where parsing of MacOS package manifests (`Info.plist`) could return an error for some specific packages with unexpected or unconventional values. In this release, such issues are handled correctly and will not cause the package building process to fail. **RMSC-2507 ZEN-26325**

3.1.2965.738 [RTM]

Released on Nov 30, 2023

Single sign on with Keycloak **RMSC-1147**

RMS UEM supports the Keycloak service for user authentication instead of RMS UEM internal users. The integration of Keycloak with RMS UEM brings user authentication to a new level of security and efficiency. This enhancement not only strengthens the security posture of RMS UEM, but also provides users with a streamlined and standardized authentication experience through the robust capabilities of Keycloak.



Sign in screen

Enhanced UI and Data Grids **RMSC-2106**

RMS UEM now has an enhanced data table that provides better filtering and searching capabilities. In addition, a column selector is supported, allowing users to customize the display of columns based on their preferences. This new feature increases user flexibility and improves the overall usability of the RMS UEM interface, providing a more personalized and efficient experience for managing and analyzing data.

COMPUTER DEVICES

🔄 ✕ Delete ✎ Edit ⬇️ Download agent

🔍 Filter 📄 Column 🔍 Search...

<input type="checkbox"/>	Type	Hostname	Domain	Last inventory ↓	Serial number	Machine GUID	Managed
	desktop-1ph6in		WORKGROUP	Nov 29, 2023, 5:35:01 PM	VMware-56-4d-4e-97-6a-b6-bf-d7-00-67-4f-10-59-bc-2a	{5662D883-156E-4868-AA80-94DE7CAF6987}	Yes
	mac-2		MANAGESOFT	Nov 29, 2023, 4:25:01 PM	C07GG000001	{1D3E565F-748E-4761-3677-81336D6281D6}	Yes
	rmsqavm-c07gg04lph8		MANAGESOFT	Nov 29, 2023, 4:25:01 PM	C07GG04LPH8	{C12FFAC3-065D-423C-C064-2749104C0FC2}	Yes
	desktop-mi7avdj		AIO.local	Nov 29, 2023, 7:20:02 AM	VMware-56-4d-69-b2-fc-09-28-ff-66-7e-82-1f-d2-53-94-06	{C94AA48E-96CA-4C26-B2B6-8F7F406D49D0}	Yes

data table

Dynamic groups RMSC-2016 RMSC-2104

The extension of groups now includes optional device matching conditions, enabling automatic assignment or removal of managed devices. This enhancement simplifies the process of patching applications with minimal effort. The increased flexibility facilitates efficient device management and organization, contributing to a more streamlined and effective workflow.

General Device matching

CASE SENSITIVE CONDITION MATCHING

i Match text device properties (e.g. Hostname) and software conditions case sensitive or insensitive.

And +

- ✕ OS type **Equals** Windows
- ✕ Software **Installed** Google | Chrome | <=119.0.6045.160

Dynamic group condition

Security assessment RMSC-2101

Reviewing vulnerability information within the system is facilitated by the Security Assessment feature. Using this feature, the product enables users to identify the most vulnerable devices and pinpoint the specific product versions responsible for those vulnerabilities, providing guidance on necessary upgrades for resolution.

SECURITY ASSESSMENT

Vulnerabilities Products Devices
🔍 Search...

CVE ID	CWE name	Score ↓	Status	Affected products	Affected devices
CVE-2015-3051	Improper Restriction of Operations within the Bounds of a Memory Buffer	10	PUBLISHED	1	2
CVE-2015-5104	Improper Restriction of Operations within the Bounds of a Memory Buffer	10	PUBLISHED	1	5
CVE-2015-3076	Improper Restriction of Operations within the Bounds of a Memory Buffer	10	PUBLISHED	1	2
CVE-2012-1716	Improper Restriction of Operations within the Bounds of a Memory Buffer	10	PUBLISHED	1	5
CVE-2013-2384	Improper Restriction of Operations within the Bounds of a Memory Buffer	10	PUBLISHED	1	5
CVE-2015-3050	Improper Restriction of Operations within the Bounds of a Memory Buffer	10	PUBLISHED	1	2

Vulnerabilities overview

SECURITY ASSESSMENT

Vulnerabilities Products Devices

Search...

Name	Publisher	Edition	Vulnerabilities count	Devices count
Chrome	Google	Stable	1807	176
Acrobat Reader	Adobe		1026	86
Firefox	Mozilla		967	73
Edge	Microsoft	Beta	729	4
Firefox	Mozilla	ESR	386	19
Acrobat	Adobe		328	67
Java Runtime Environment (JRE)	Oracle	Standard	264	41

Vulnerable products overview

Upgrade package for agents **RMSC-792**

Commencing with RMS UEM version 3.1, we introduce support for upgrading RMS UEM agents. Upgrade packages are available in the application library, enabling seamless deployment throughout your system.

APPLICATIONS

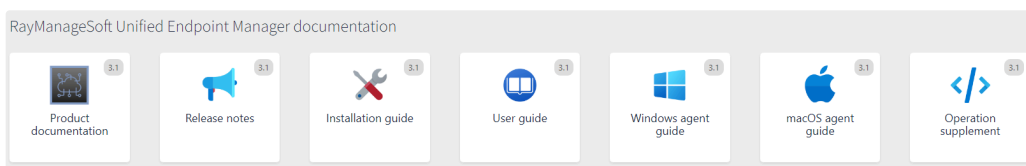
+ Add X Delete Edit + Add folder Filter Folder view Column

Status	Type	Icon	Name	Display name	Version	Manufacturer
●	Windows	Upgrade package for Windows agent	Upgrade package for Windows agent	Upgrade package for Windows agent	13.1.0.12161	raynet
●	macOS	Upgrade package for macOS agent	Upgrade package for macOS agent	Upgrade package for macOS agent	13.1.0.12168	raynet

Agent upgrade packages

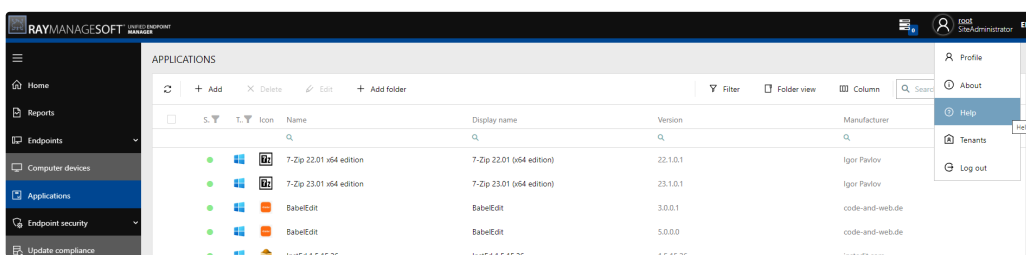
Online documentation and direct help **RMSC-2152** **RMSC-2226**

The RMS UEM documentation is now accessible online and undergoes regular updates. The comprehensive set of documentation can be located on the about page, providing a full set of resources for reference.



Online documentation

Additionally, RMS UEM now offers direct help for the current page. While in a specific section or dialog, selecting 'Help' will seamlessly guide you to the corresponding chapter in our updated user guide.



Direct help

Other improvements/changes

- Improved handling of creating installers for existing packages. [RMSC-2041](#)
- Run commands support file usage. [RMSC-1419](#)
- Files to be added to the third-party package are sorted for easier viewing. [RMSC-1985](#)
- Branding details of a third-party package are mandatory. [RMSC-2230](#)
- Added the ability to download and upload package files. [RMSC-2007](#)
- Text files inside packages can be edited directly. [RMSC-2018](#)
- Implementation of a lock for intentional renaming of the package name during editing. [RMSC-2010](#)
- Targeting is now also supported for installers and run commands. [RMSC-2019](#)
- Postponed package can be viewed directly in the MacOS AppCenter. [RMSC-2042](#)
- The "Patch Management" section has been renamed "Third-Party Patching" and is now part of the "Endpoint Security" section. [RMSC-2100](#)
- MST has been introduced for a silent installation of the Windows Agent. [RMSC-2105](#)
- The 'Deployment Targets' in the Package Details view support dynamic loading. [RMSC-2146](#)
- macOS system components are now filtered during fingerprint creation on catalog service. [RMSC-2210](#)
- MacOS 14 (Sonoma) can now be selected as target OS. [RMSC-2219](#)
- The file store cleanup job can be configured to issue warnings only, instead of directly deleting files from the store.. [RMSC-2249](#)
- Azure AD import now supports group device relationship. [RMSC-2285](#)
- The ability to associate files with the installer has been deprecated. Instead, the uploaded file now automatically creates the association based on its location relative to the installer folder.. [RMSC-1420](#)

Resolved Issues

- Resolved an issue with command processing in the MacOS agent during package installation. Now exit codes of completed commands are processed correctly during the ongoing installation process. [RMSC-1110](#)
- Resolved an issue where configured contact information was not displayed in the MacOS AppCenter. [RMSC-2037](#)
- System logs on the server should be free of third-party library info messages. [RMSC-2126](#)
- Resolved an issue where the MacOS AppCenter did not update the list of installed packages during a user-initiated installation. [RMSC-1994](#)
- Resolved an issue with processing of update compliance policy packages on the managed device side. [RMSC-1710](#)
- Resolved an issue where repairing a package in the MacOS AppCenter caused inconsistent installation states on the server side. [RMSC-2013](#)
- Resolved an issue where special characters in package properties were handled incorrectly during OSD and NDC generation. [RMSC-826](#) [RMSC-1995](#)
- Support for scheduled tasks now includes cancellation, and deleting a task automatically ends any ongoing execution. [RMSC-2005](#)
- System logs on the server should be free of any third-party library info messages. [RMSC-2046](#)
- Resolved an issue where blank and whitespace values were incorrectly accepted for certain package properties. [RMSC-2048](#)
- Resolved an issue with incomplete package names in the Package Store package selection. [RMSC-2063](#) [RMSC-2086](#)
- Resolved an issue with adding a device to a group with the Administrator role. [RMSC-2114](#)
- Resolved an issue with group identification for devices/packages to be added in the Automation tool. [RMSC-2384](#)
- Resolved an issue where a package with dependencies could not be added to the policy. [RMSC-2362](#)
- Resolved an issue with reading IPv6 address information displayed in the Device Details view. [RMSC-2295](#)
- Resolved an issue with re-importing Azure AD information to match existing devices, groups, and relationships. [RMSC-2314](#)

Known Issues

- **Packaging of a package sometimes fails due to a MinIO connection issue**

Sometimes, due to connection problems a change could not be uploaded to MinIO and therefore the packaging will fail. If this is the case, redo the change. In most cases, the next upload will work directly. [RMSC-1098](#)

- **Applicable package in combination with NotApplicable dependency package issue**

When a package gets processed for installation that is applicable but has a dependency package that is not applicable the main package wrongly is shown in AppCenter as installed and processing of install state is incorrect.

[RMSC-1238](#)

- **Drag&Drop issue in applications tree view**

It is possible to drag and drop a package onto another package. In this case, the dropped package is moved to the root folder. [RMSC-1898](#)

- **Dynamic group condition processing ignores the operating system kind**

When condition of the group is processed for a certain device the operating system kind are yet not considered. Make sure to have the condition consistent created with the operating system kind specified for the group. [RMSC-2257](#)

- **Agent for macOS does not directly apply changes of installed schedule**

Immediately after the installation of a new schedule by the agent, the changes are not applied. A reboot is required.

[RMSC-2305](#)

- **Background color for selected rows changes color**

You might experience two different background colors for selected rows. [RMSC-2337](#)

- **AppCenter for Windows displays package with inactive lifetime as optional**

In case the lifetime of a package expires AppCenter will still display the assigned package for optional installation.

[RMSC-2343](#)

- **AppCenter for MacOS does not display the upgraded package**

When the package installation completes the upgrade, AppCenter does not display the package. After a second application of the policy, the package will be available in AppCenter. [RMSC-2344](#)

- **Loosing selection of rows on scrolling in data table**

The selection is reset when scrolling through the table. [RMSC-2421](#)