



 **RayVentry[®]**
is part of RayManageSoft *i*



RayManageSoft[®] *i*

10.5.1
Patch Notes



Copyright © Raynet GmbH (Germany, Paderborn HRB 3524). All rights reserved.

Complete or partial reproduction, adaptation, or translation without prior written permission is prohibited.

Patch Notes

for release 10.5.1 *infinity*

Raynet and RayFlow are trademarks or registered trademarks of Raynet GmbH protected by patents in European Union, USA and Australia, other patents pending. Other company names and product names are trademarks of their respective owners and are used to their credit.

The content of this document is furnished for informational use only, is subject to change without notice, and should not be construed as a commitment by Raynet GmbH. Raynet GmbH assumes no responsibility or liability for any errors or inaccuracies that may appear in this document. All names and data used in examples are fictitious unless otherwise noted.

Any type of software or data file can be packaged for software management using packaging tools from Raynet or those publicly purchasable in the market. The resulting package is referred to as a Raynet package. Copyright for any third party software and/or data described in a Raynet package remains the property of the relevant software vendor and/or developer. Raynet GmbH does not accept any liability arising from the distribution and/or use of third party software and/or data described in Raynet packages. Please refer to your Raynet license agreement for complete warranty and liability information.

Raynet GmbH Germany

See our website for locations.

www.raynet.de



Table of Contents

Introduction	4
Resolved Issues	4
Links	12

Introduction

This patch fixes issues for RayManageSoft / RayVentory 10.5.

Since this patch is delivered as MSI, please refer to the RayManageSoft / RayVentory Upgrade Guide for instructions on how to upgrade to RayManageSoft / RayVentory 10.5.1.

The last version before this release was 10.5. Therefore, this upgrade path is regarded as the RayManageSoft / RayVentory standard upgrade procedure. To upgrade from releases earlier than 10.5, please consult your Raynet support representative.

**Warning:**

Prerequisites have changed for users using the RayManageSoft Web user interface. To use this feature, at least ReportViewer version 11.0.0.0 is required. The ReportViewer is provided with the RayManageSoft installation sources and can be found in the `Third Party Software` folder.

Resolved Issues

The application of this patch resolves issues and introduces improvements to the various features offered by the RayManageSoft / RayVentory 10.5. This chapter of the Patch Release Notes gives an overview of those issues and improvements.

Package editor improvements [RMS-322]

Parallel working with multiple windows for the Package Editor has been significantly improved. Furthermore, several minor fixes in the dialogs of the editor have been applied.

Reordering of packages in frozen bundles [RMS-390]

It is no longer possible to change the order of packages in a bundle that has already been added to a policy. This has been disabled to avoid conflicts that might occur with other bundles and packages which are part of the policy the bundle has been added to. Possible conflicts for a bundle are checked when the package is added to the policy and then the order of the packages for that bundle is expected to be frozen.

Loading of policies and their properties has been improved [RMS-629]

The loading function for policies and their properties has been reworked. Loading has been improved by parallel communication with the RayManageSoft database as well as with the active directory.

Security packages causing multiple reboots [RMS-1002]

In some cases, the target of an automatically generated security package was not correct. Because of this, some installers of this packages were not executed and the device was not patched. After the installation of the security package a reboot for the device was triggered but, because the device had never been patched, this resulted in a reboot cycle on the managed device. Now, a new `RMSPatchInstaller` has been implemented which is being called by the security packages. The `RMSPatchInstaller` uses the information of the **RMS Security Analyzer** (Resource GUIDs) and starts the installation of the resources that have been determined as required. The `RMSPatchInstaller` is active for newly created packages.



Be aware:

The current version of the **RMS Security Analyzer** needs to be deployed!

Reboot information issue for received packages [RMS-1071]

The reboot information on the side-bar of the software snap-in was not correct for received packages. The reading from the prepacked packages which caused this has been fixed now.

Remove package from policy in the software snap-in [RMS-1075, RMS-1585]

When a user had no read access for some policies (usually non-RayManageSoft policies), there was an error message in the Removal Wizard when deleting a package from all policies. Now these policies will be skipped. Policies with allocated packages will not be skipped.

Update package name issue [RMS-1076]

When a package had been received via `MGSReceive` the existing entries within the database were updated correctly but the package name was not updated regarding case sensitivity. This has been fixed.

Search function in Software library tree view [RMS-1089]

The tree view in the software library has been improved. When using the search mechanism, the collapsed nodes are also considered now.

Wrong status of packages in software snap-in [RMS-1097]

The status of the software packages in the software library was shown as "**unknown**". The stored procedure for determining the status of the packages has been fixed now.

Update package parent relation [RMS-1279]

When a package had been received via `MGSReceive` the existing entries within the database were updated correctly, but the package parent relation was not updated. This has been fixed.

Distribute prerequisite packages [RMS-1363]

The Distribution Wizard now offers the possibility to consider the dependencies of a package selected for distribution. On the summary page of the Distribution wizard the set of dependency packages is displayed. These packages will be distributed in addition to the selected package if the dependency distribution is selected. The library snap-in and the **Package Editor** have also been enhanced to detect and show cycles in the dependencies of packages. Furthermore, a warning will occur when trying to distribute a package that has a dependency cycle.

Non-Microsoft Patching only in Security Management [RMS-1457]

Security Patch Management can now also be used for non-Microsoft patching only. The conditions which required files for windows patching to be available have been removed. The **RMS Security Analyzer** does the offline scan depending on the presence of the files required for the scan.

**Be aware:**

The current version of the **RMS Security Analyzer** needs to be deployed!

Problem with too long Remote Execution Commands [RMS-1601]

The error message from Windows was '`stub received bad data`'. The remote execution command used not to work as soon as it exceeds 1023 characters.

Missing dependencies during installation of package [RMS-1604]

During the installation of a package, dependencies with the default target created in a package were not considered correctly. This issue has been resolved.

Immediate reboot issue [RMS-1622]

When policies with at least two packages with immediate reboot were processed on a managed device, the policy was not processed completely. Now, after the reboots, the processing of the policy will continue as expected.

Precalculation in Reporting [RMS-1626]

We introduced a precalculation mechanism for `SoftwarePackageInstallationSummary`, `SecurityPatchInstallationSummary`, and `ComplianceByBulletinSummary` reports to improve the performance. This feature is optional and can be easily activated/deactivated and addresses possible time out issues for the named reports because of too much data to be calculated. Three new tables and jobs have been added. The jobs which are triggering the precalculation are called every day every three hours between 7 am to 10 pm. The data is written to the new tables and is accessed from the reports instead of reading and processing raw data.

Logging issues for Policy Editor [RMS-1644]

By default, logging is deactivated. For some parts it is used to write logs anyway causing the log file size to increase. The log file can be found in the user profile under the name `rms_ldap_log`.

ADBrowser issue [RMS-1649]

There was an issue where the nodes were not displayed when the **ADBrowser** was reading from the database. When double-clicking on a node, the node itself was getting a child object which was the same node again. This issue is fixed.

License Term issue with RmsSoftwareRecognition [RMS-1651]

An issue with the license term `RmsSoftwareRecognition` has been addressed. The activated license term will now be identified correctly.

Wrong AD-tree structure in reports [RMS-1665]

In the tree on the first page of the reports snap-in a wrong structure of the active directory objects was displayed. For some entries the parent - child relation was not correct. This issue has been fixed.

Timeout on reporting [RMS-1666]

The **Bundles Installation Summary** report and the respective stored procedures have been reworked to improve the performance of data being processed for the report.

Package Editor Windows shifting in the background [RMS-1670]

The **Package Editor** windows used to shift in the background. This issue applied to the following windows:

- **Files and folder** - After a new file has been added via file window
- **Run commands** - After a working directory has been selected and after clicking on **OK** and **Cancel**.
- **Services** - After a path to an executable has been selected and either **Saving** or **Cancel** has been selected.
- **Shortcuts** - After a working directory or a target has been selected and after clicking on **OK** and **Cancel**.
- **Installers** - After a source directory has been selected and after clicking on **Saving** and **Cancel**.

Daily database maintenance SQL job issue [RMS-1717]

The daily database maintenance SQL job could not be executed. The **Populate discovery from inventory** step failed. An issue in the `PopulateNetworkDevices` stored procedure was fixed to resolve this issue.

Incorrect 'pending display in reporting [RMS-1723]

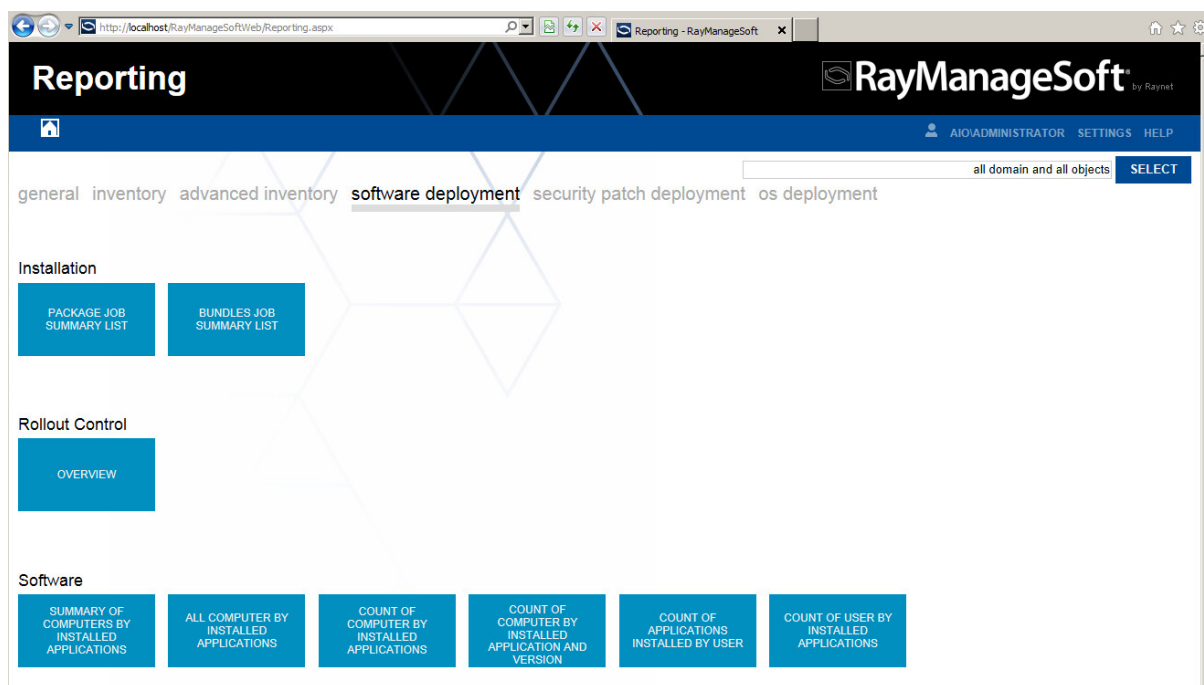
Certain bundles were falsely shown as **pending** in the bundle reporting. This was due to the corresponding GPO that only affected a certain set of devices and some other devices were still taken into account.

Incorrect 'out-of-policy' display in reporting [RMS-1723]

In the installation reporting (package installation summary) all packages used to be incorrectly marked as **Out of policy**. The stored procedure of that report has been fixed.

Optimization of Web Interface [RMS-1724]

The web user interface has been reworked. There is only one reporting snap-in available, all other snap-ins have become deprecated. It is executable for all members of the group **MGS Report Users** (without any admin right) and provides full access to the new RayManageSoft reports.



To be able to use this feature, at least **ReportViewer** version 11.0.0.0 is required. The **ReportViewer** is provided with the RayManageSoft installation sources and can be found in the `Third Party Software` folder.

Improved search function in the ADBrowser [RMS-1734]

The search function in the **ADBrowser** does not show any results when the nodes are not expanded. For the **ADBrowser** reading from Active Directory, this is by design because the domains are not loaded completely. Only nodes that are manually expanded are then loaded step by step. The **ADBrowser** reading from the RayManageSoft database has been improved and is now considering the complete structure.

Further improvements for the search function in the **ADBrowser** while reading from active directory are planned for future releases. When this has been integrated these can be found in the release notes under our internal reference number RMS-1795.

GPO MMC issue [RMS-1738]

There was an issue with the group selection in the security filtering when working with a policy of one domain and editing a package trying to add a new allow group in the GPO MMC. In some cases it was not possible to select a security group of a domain other than the root domain. Only the root domain and its security groups were visible.

Package distribution priority [RMS-1744]

The **Distribution Wizard** used to create distribution jobs with a wrong priority. This issue has been fixed.

Loading of policies in policy snap-in improved [RMS-1761]

The active directory in the policy snap-in is only queried for visible policies. All other policies are loaded using the RayManageSoft database with the date of the last polmerge. This ensures that policies which are not being relevant for the software deployment are omitted correctly and are not having any negative impact on the performance when the the policy snap-in is loaded.

Calling remote execution on computer device [RMS-1763]

The actual device role of a device in the devices snap-in was not read correctly which was then causing issues in the user interface. Due to this, a remote execution was not offered where it was expected. This has been fixed.

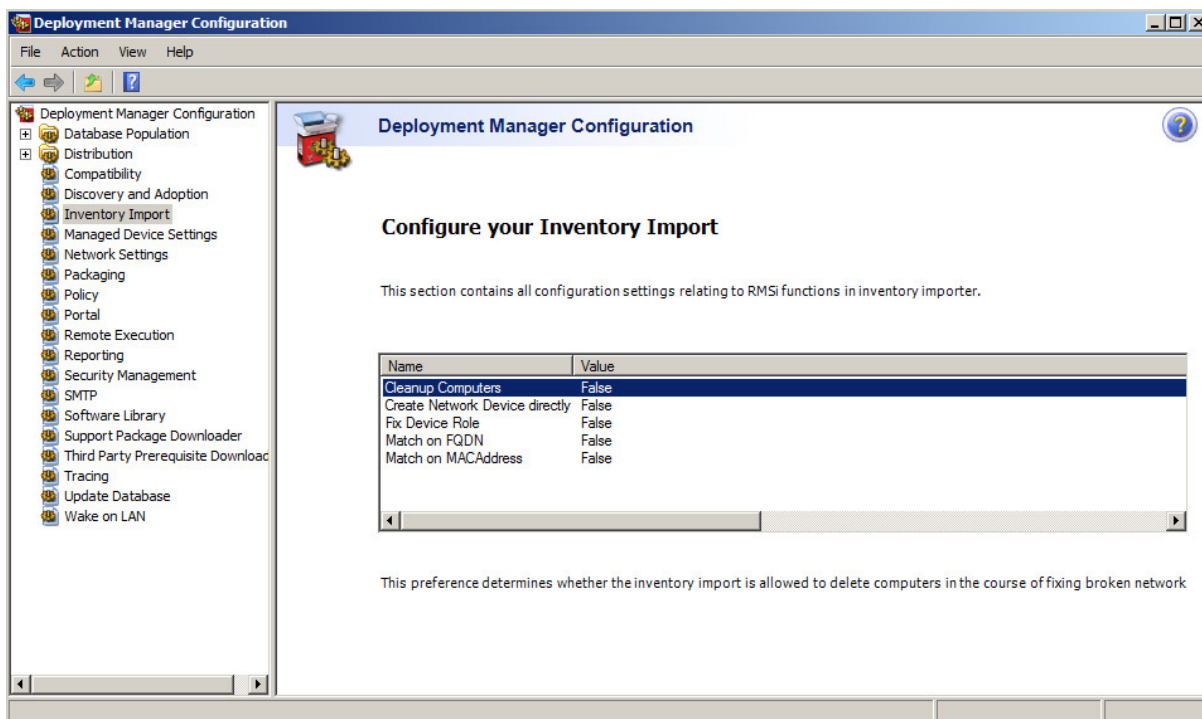
RMS ADBrowser and the communication with active directory [RMS-1776]

The **ADBrowser** has been improved in regard to the management of multi-domain and multi-forest environments while working with the policy editor and editing packages or adding packages to a policy. It correctly uses the given credentials and communicates to the active directory querying only the domains that are in the RayManageSoft database. Furthermore, the performance of the communication with the active directory has been improved.

Computers disappearing after inventory import [RMS-1777]

A problem with missing entries in the `Computer` and `NetworkDevices` table has been solved. The matching and merging of duplicated network devices has been improved and is now performed directly when the inventory is being imported.

There was also an issue with machines having several network devices with the same MAC address active which was causing a faulty merging and cleanup in the `Computer` and `NetworkDevices` table. These network devices which are not having an IP address are not omitted correctly.



Note:

Please make sure to check the RayManageSoft **Deployment Manager Configuration** and activate the new mechanism in the inventory import tab.

Package creation issues for "Create a new version of this application" [RMS-1803, RMS-1813]

In the software snap-in if a package was copied with the option **Create a new version of this application**, the project was not created correctly. The files were not correctly copied and the destination path was faulty.

Furthermore, if a copy was created after this option had been used, the sources were not removed correctly. Because of this, trying to create a new copy with the same version as the one that got deleted, resulted in an error message which stated that the folder was not empty and a path to a non-existing or empty folder had to be selected.

Links

Visit www.raymanagesoft.com for further information on RayManageSoft / RayVentory, and take a look at the additional resources available at the Knowledge Base: <https://raynetgmbh.zendesk.com/hc/en-us>.

Raynet is looking forward receiving your feedback on your RayManageSoft / RayVentory experience. Please contact your Raynet service partner or write an e-mail to: support@raynet.de to add your ideas or requirements to the RayManageSoft / RayVentory development roadmap!

RayManageSoft / RayVentory is part of the RaySuite

More information online
www.raynet.de



Raynet GmbH

Technologiepark 20
33100 Paderborn, Germany
T +49 5251 54009-0
F +49 5251 54009-29
info@raynet.de

www.raynet.de