

# Release Notes RayPack 2.1



**Copyright © Raynet GmbH (Germany, Paderborn HRB 3524). All rights reserved.  
Complete or partial reproduction, adaptation, or translation without prior written permission is prohibited.**

#### Release Notes

Raynet and RayFlow are trademarks or registered trademarks of Raynet GmbH protected by patents in European Union, USA and Australia, other patents pending. Other company names and product names are trademarks of their respective owners and are used to their credit.

The content of this document is furnished for informational use only, is subject to change without notice, and should not be construed as a commitment by Raynet GmbH. Raynet GmbH assumes no responsibility or liability for any errors or inaccuracies that may appear in this document. All names and data used in examples are fictitious unless otherwise noted.

Any type of software or data file can be packaged for software management using packaging tools from Raynet or those publicly purchasable in the market. The resulting package is referred to as a Raynet package. Copyright for any third party software and/or data described in a Raynet package remains the property of the relevant software vendor and/or developer. Raynet GmbH does not accept any liability arising from the distribution and/or use of third party software and/or data described in Raynet packages. Please refer to your Raynet license agreement for complete warranty and liability information.

Raynet GmbH Germany  
See our website for locations.

[www.raynet.de](http://www.raynet.de)

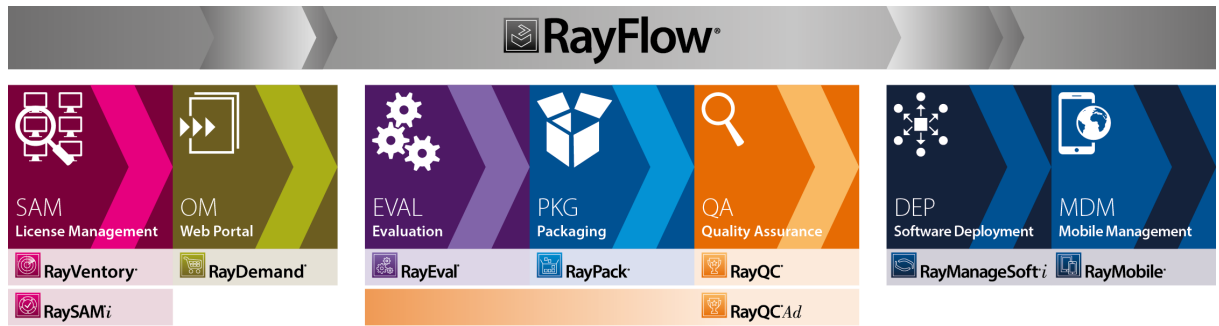
---

## Table of Contents

<b>Introduction</b> .....	4
<b>What's New?</b> .....	5
New Features .....	5
Improvements & Enhancements .....	9
Resolved Issues .....	10
<b>Migration</b> .....	12
<b>System Requirements</b> .....	14
Hardware Requirements .....	14
Supported OS .....	15
Prerequisite Software .....	15
<b>Additional Information</b> .....	17

# Introduction

RayPack 2.1 is the next iteration of Raynet's framework for the creation and management of software packages. It is designed to support a broad variety of package formats, target operating systems and deployment systems. RayPack is available as a stand-alone product as well as having the ability to be integrated into the RaySuite solution powered by RayFlow.



Enterprise Application Lifecycle Management

The RaySuite components allow enterprises to implement well-structured processes, which control package evaluation, creation, manipulation, import, export, validation, storage, and deployment.

In the upcoming RayPack release, several improvements have been added, issues have been resolved and new features have been added..

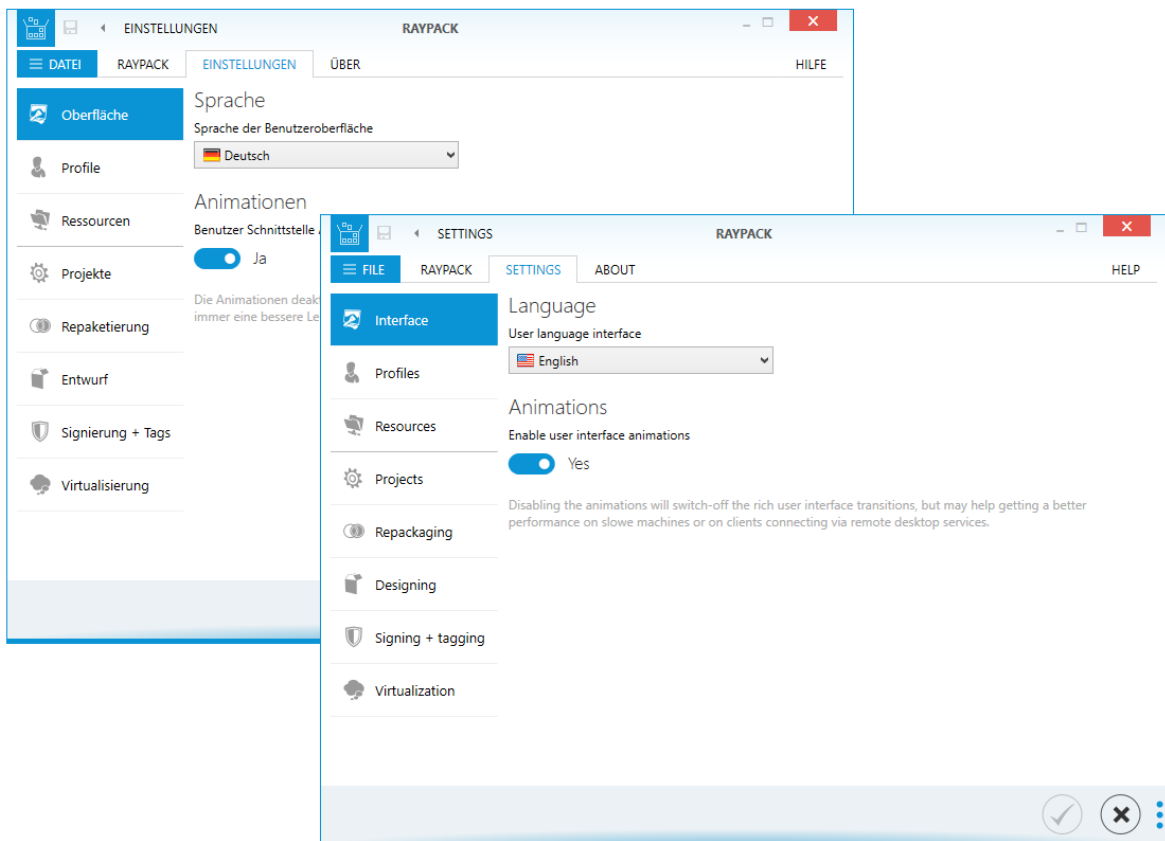
# What's New?

The following chapters contain an overview of the improvements, resolved issues, and the new features that are part of the new release of RayPack 2.1.

## New Features

### Multilingual User Interface [RPK-1735]

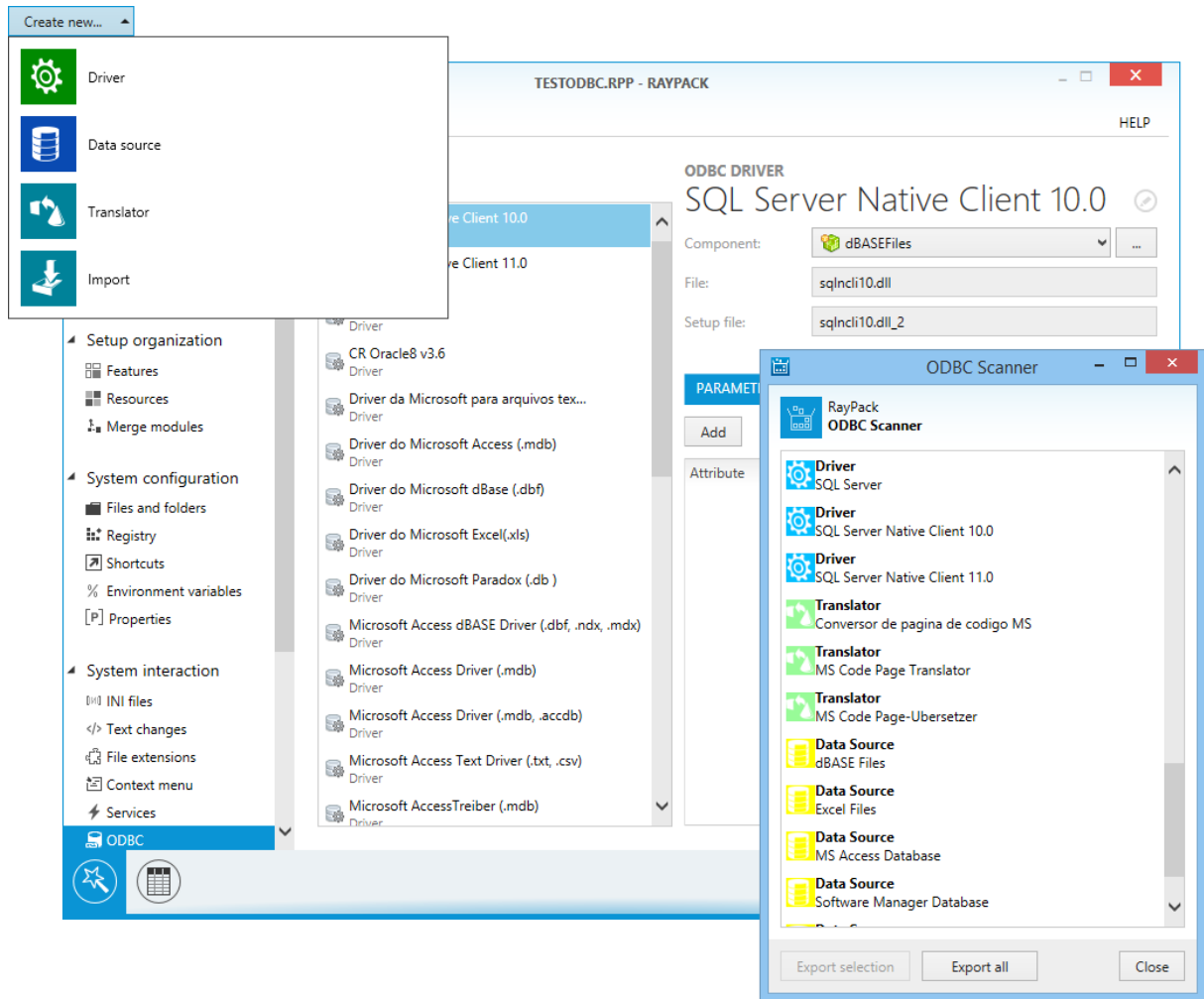
Now that RayPack is available with user interface language packs for English (default), German, and Polish, we finally have the initial answer for the repeated user requests we received about this topic. Users simply select their preferred language from the Settings area, restart the application, and benefit from the plus of usability our fully localized UI offers.



At present, extending the available options with Dutch and French is planned for upcoming product release cycles. As the RaySuite development roadmap is user driven to the greatest possible extent, we welcome your suggestions for further language packs that will boost your productivity.

## Additional Standalone Tool: ODBC Scanner [RPK-1092]

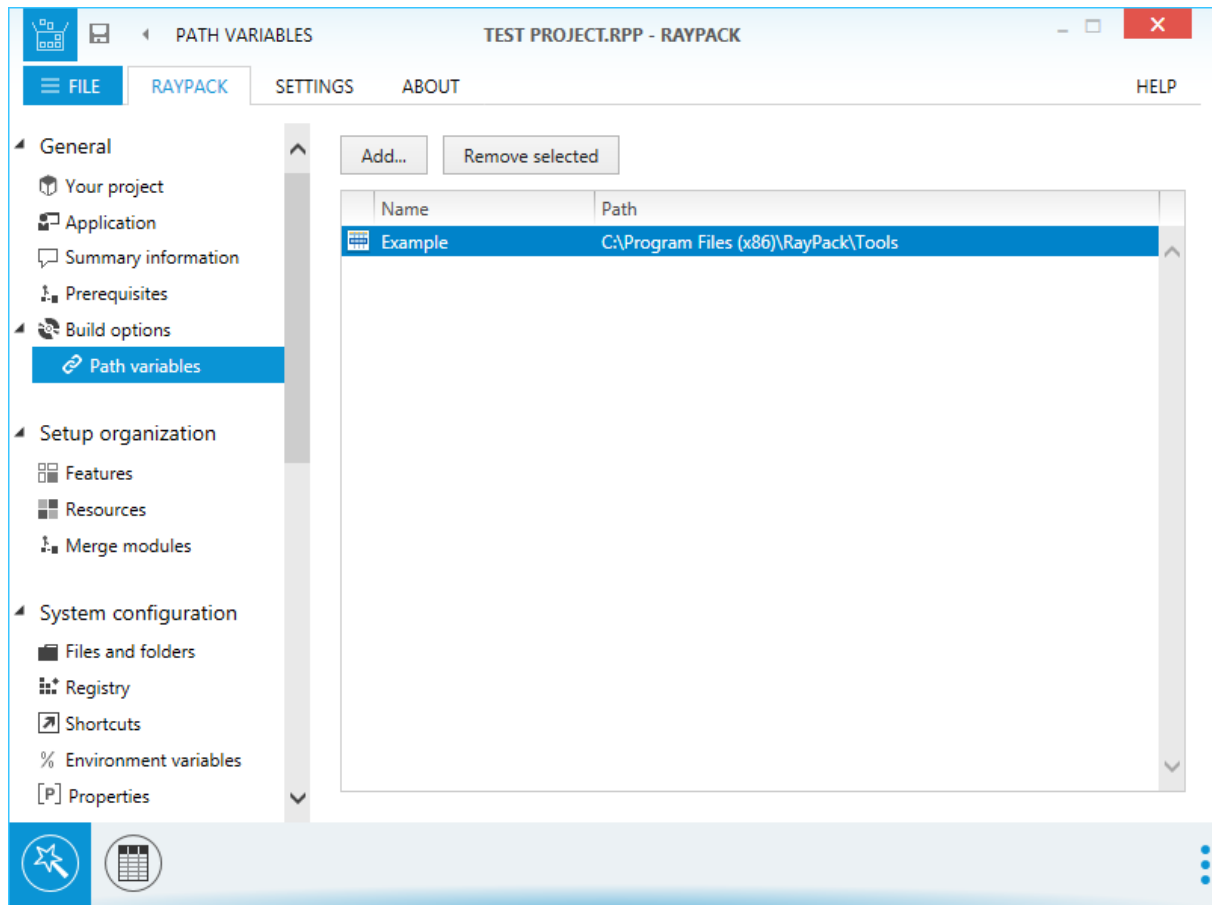
Especially RayPack users from the setup development sector will benefit from the provision of this new standalone tool. With this additional scanner module, it is easy as pie to scan any device for ODBC settings and transfer the scan result files (. rpoDBC) to the packaging workstation, where they may be imported into any MSI, MST, or RayPack Packaging Project (. rpp).



All standalone scanners are provided in the `Tools` folder within each RayPack 2.1 installation (typically `C:\Program Files (x86)\RayPack\`). Their interactive GUI can be used to view and pick-up the right object(s) to be exported. Standalone scanners can be used on any system without a RayPack license. The license is only required to import the results back into MSI/RPP projects on the packaging workstation.

## Support for custom variables and path management [RPK-1909]

With this release, support for user defined variables for `RpSourcePath` resolvers/compactors has been added to RayPack.



## App-V 5.1 and 5.0 SP3 feature support for build options [RPK-1841]

Whilst former releases of RayPack allowed to create virtual packages in compliance to format standards of App-V 5.0 SP3 and 5.1, the latest improvements additionally allow to modify application package settings that are format specific.

	App-V 4.6	App-V 5.x
Shortcuts	✓	✓
Files	✓	✓
Registries	✓	✓
Extensions	✗ not supported	✓
ProgID	✗ not supported	✓
Verb	✗ not supported	✓
MIME	✗ not supported	✓
EnvironmentVariables	✓	✓
COM	✗ not supported	✓
Services	✗ not supported	✓
Fonts	✗ not supported	✓
Application Paths	✗ not supported	✓
URL Protocol handlers	✗ not supported	✓

## ThinApp Converter has been extended [RPK-1931]

The ThinApp Converter now supports the conversion of extensions and URL protocols. These are now automatically converted and added to the file.



# Improvements & Enhancements

## **Improved sequencing of newly created elements** [RPK-1806,1807,1808,1809,1810]

The sequencing of newly created elements (IIS, permissions, scheduled tasks, and text changes) has been improved and will now return the values that would be expected.

## **Better handling of InstallShield conversion** [RPK-1913,1922]

Custom variable paths from ISM are now transferred to `.rpp` during the conversion which preserves the file source paths. There were further improvements in the handling of the InstallShield conversion.

## **User information in the SQL database creation wizard has been improved** [RPK-1183]

The user name in the **Select User** dialog and the **Create SQL Database** wizard are now the same. Previously, the wizard displayed the identifier of the user object and the Select User dialog displayed the user name.

## **Improved keyboard navigation for the RCP files & folders** [RPK-836]

When using the rightward arrow in a directory that has children, the directory will now be expanded. Previously, the directory was not expanded, but the pointer did move to the next directory.

## **Navigation within feature tree structure has been improved** [RPK-417]

After creating a new child feature, this will now be selected. Furthermore, when being on a parent and using the downward key, the child folder will now be selected.

## **Listing of existing file extension objects has been reworked** [RPK-214]

The listing of existing file extension objects now also shows the related object. Previously, only the name of the extension was displayed.

## **Improved clipboard handling for interoperability with other table-editing tools** [RPK-1915]

The clipboard handling in the tables view has been changed to improve the interoperability with other table-editing tools. Copying rows from/to RayPack's Table Editor has become a seamless matter of simple clicks.

## **Improved command line tool** [RPK-1956, 1960]

New commands and parameters have been added, therefore some old commands and parameters have become deprecated, to improve the overall usability of the command line tool.

## Resolved Issues

The following issues from the previous version of RayPack have been resolved in this release:

- Removing a file extension via visual designer does not remove related context menu objects. [RPK-253]
- The edit context menu form is irritated by the creation of a new file extension. [RPK-261]
- Tooltip with validation result text may overflow the RayPack application boundaries. [RPK-331]
- Removing a feature does not remove all resources assigned to a feature. [RPK-345]
- AppSearch wizard produces incorrect values for folder and file searches. [RPK-448]
- Language is not correctly determined on file import on a non-English OS. [RPK-966]
- Adding a new ODBC Translator creates incorrect features. [RPK-1027]
- Content of driver view is cropped for minimal window dimensions. [RPK-1161]
- When a driver object is removed, database table contents are not removed. [RPK-1164]
- Automatically detected supporting files for new driver are not stored in separate components even though the wizard option is activated. [RPK-1165]
- There is a misleading object reference in the delete SQL database confirmation dialog. [RPK-1168]
- Broken MSI formatted string selector interface within the create SQL script wizard step 3. [RPK-1185]
- RayPack shortcut does not work if PackPoint is configured on a shared network drive and the network is down. [RPK-1281]
- The value field inside the language selection of merge module is not in the center. [RPK-1435]
- The first startup of an application creates a project and snapshot directory on the root drive regardless of the previous settings. [RPK-1442]
- The symbol icon of RayPack is blurred. The image cannot be recognized. [RPK-1456]
- Checkbox for object/container inheritance is not restored to a correct value when opening permissions editor. [RPK-1459]
- Setting up a new component ID from outside of the package is not possible in the system search wizard. [RPK-1464]
- The snapshot comparison tool is generating corrupted snapshots on specific systems. [RPK-1606]
- Recent files list has a different behavior for missing projects between file menu and dashboard. [RPK-1634]
- Extra characters are added to the custom path of the ThinApp bin directory. [RPK-1712]
- It is possible to add prerequisites to a project even if they are not downloaded. [RPK-1720]
- When using multiselection in registry view, only one item is processed. [RPK-1760]
- MIME page of the extension wizard allows incorrect values. [RPK-1845]
- Main window parameters are not behaving correctly on first-time resize/maximization. [RPK-1860]

- Command line builder fails to build .rpp project with relative paths. [RPK-1914]
- Cannot open a project with attribute value 32 in the Component column. [RPK-1937]
- Adding merge modules to an .rpp project and then building it to an MSI erases summary information stream. [RPK-1945]
- Provide a way that the "Save as" functionality can produce uncompressed resources. [RPK-1946]
- Cannot import an icon if the table icon is missing. [RPK-1948]
- Replacing an icon in an MST causes an application crash.. [RPK-1957]
- RayPack crashes after adding launch conditions table to a 7zip MSI. [RPK-1958]
- When the option **Use a template for Windows Installer Transforms** is active, the template always overwrites options that are defined in the template when editing a transform in RayPack. [RPK-1977]
- Incorrect handling of references in `SecureCustomProperties` properties. [RPK-1979]
- Could not open properties dialog for a folder containing a linked folder definition in an opened RPP project. [RPK-1980]
- **Export registry from a component** exports the whole registry. [RPK-1983]

# Migration

## Migration from 2.0 to 2.1

The migration from version 2.0 is a straightforward process. In order to migrate, simply start the setup of the RayPack 2.1 installation media.

It is recommended to install RayPack 2.1 on a clean machine having no previous version of PackPoint. Clean install ensures the newest adjustments and enhancements will be enabled out-of-the-box. If you want to re-generate the PackPoint content from 2.1 resources, simply remove the PackPoint folder (C : \RayPack \PackPoint by default) and re-run RayPack 2.1. The User Guide contains further information about command line interface of RpCmd.exe tool, which also provides PackPoint management capabilities.

When a previous version of PackPoint is detected during the installation, 2.1 will offer an upgrade option.

### LICENSING

- **New licensed feature for PackCommander, PowerShell Custom Action, Universal Apps Import Wizard and Linked folders**

If you are migrating from RayPack 2.0 or earlier, your license data does not contain the necessary information to activate these features, making them inaccessible via RayPack UI. In this case simply reactivate RayPack using the same order number, and the necessary license information will be automatically downloaded from the server.

## Migration from older versions

Refer to the RayPack Knowledge Base for information about migration paths from version 1.4 and older.

# Troubleshooting

If you experience abnormal symptoms (like program not starting, missing features etc.) after the upgrade, we highly recommend to perform the clean installation of RayPack 2.1. In order to do that, please perform the following steps:

- 1) Locate your product order number. If you can't find it, contact our support.
- 2) Make a backup of your license file (by default installed to C:\Program Files (x86)\RayPack \\*.license)
- 3) Uninstall the previous version of RayPack
- 4) Delete the content of the installation folder (by default C:\Program Files (x86)\RayPack)
- 5) Install RayPack 2.1.
- 6) Start the main application (raypack.exe) to re-activate RayPack again.

If the issues are not resolved after performing the steps described above, the following steps will revert the profile to the original state:

7) Close RayPack

8) Backup and then remove the content of the following folders:

- %AppData%\RayPack
- AppData\Local\Raynet
- Optionally, you can also revert the PackPoint to the default state by removing the PackPoint folder (standard installation path is C:\RayPack\PackPoint)

9) Start RayPack again.

If the procedures given above did not resolve the issue, please contact our support.

# System Requirements

## Hardware Requirements

This section lists the minimal hardware requirements for devices running RayPack.

### Minimal

- Screen resolution: 1024 x 768 pixels
- Color settings: 16 bit
- RAM: 2GB
- Disk space: 10GB

### Recommended

- Screen resolution: 1280 x 1024 pixels
- Color settings: 32 bit
- RAM: 4GB or higher
- Disk space: 100GB or more

**Note:**

The installation of the RayPack framework itself requires about 400MB of disk space. The amount of additional space needed depends on the volume of your packaging material and the location of the data store.

---

# Supported OS

The following operating systems are supported for the installation and running of RayPack.

- Windows Server 2003 R2 Server
- Windows Server 2003 SP2
- Windows Server 2008 R2
- Windows Server 2008 SP1-SP2
- Windows Server 2012
- Windows Server 2012 R2
- Windows Server 2016
- Windows XP Professional SP3
- Windows Vista
- Windows 7
- Windows 8
- Windows 8.1
- Windows 10 (up to build 10240)

**Note:**

Packages generated with RayPack have their own, individual set of target OS. The list above is not designed to display which target OS are reachable by RayPack packages.

# Prerequisite Software

- .NET 4.0 Client & Full for Windows XP up to Windows 7 systems (both 32bit and 64bit)

## Virtualization pack prerequisites

- In order to create SWV packages, the Symantec Workspace Virtualization Agent 7.5 has to be installed on the packaging machine.
- In order to create Thin-App packages, the VMware ThinApp has to be installed on the packaging machine.

**Note:**

It is recommended to install RayPack on a virtual machine. This allows the packaging machine to always be in a "clean state" and ensures that any packages created are not "polluted" with information (files, registry keys etc.) from other sources other than the package that is to be packaged.

## PackCommander

Contact our Support / Sales to obtain a license for the PackCommander module.



## Additional Information

Visit [www.raypack.net](http://www.raypack.net) for further information regarding the product and current community incentives. It's also recommended taking a look at additional resources available at the Knowledge Base for Raynet products: <http://knowledgebase.raypack.net>

Raynet is looking forward to receiving your feedback from your RayPack experience. Please contact your Raynet service partner or write an e-mail to [beta@raypack.net](mailto:beta@raypack.net) to add your ideas or requirements to the RayPack development roadmap!

Our Raynet support team gladly assists you on any question or issue you encounter regarding RayPack. Feel free to sign in and open incidents via our Raynet support panel, or by simply sending an email to [support@raynet.de](mailto:support@raynet.de) if you are an already registered Raynet customer.

# RayPack is part of the RaySuite

More information online  
[www.raynet.de](http://www.raynet.de)

## Raynet GmbH

Technologiepark 20  
33100 Paderborn  
Germany

T +49 5251 54009-0  
F +49 5251 54009-29

General information: [info@raynet.de](mailto:info@raynet.de)  
Product support: [support@raynet.de](mailto:support@raynet.de)