

# Release Notes RayQC 2.2



19.02.2016

RayQC 2.2 Release Notes



---

**Copyright © Raynet GmbH (Germany, Paderborn HRB 3524). All rights reserved.  
Complete or partial reproduction, adaptation, or translation without prior written permission is prohibited.**

RayQC 2.2 Release Notes

Raynet and RayFlow are trademarks or registered trademarks of Raynet GmbH protected by patents in European Union, USA and Australia, other patents pending. Other company names and product names are trademarks of their respective owners and are used to their credit.

The content of this document is furnished for informational use only, is subject to change without notice, and should not be construed as a commitment by Raynet GmbH. Raynet GmbH assumes no responsibility or liability for any errors or inaccuracies that may appear in this document. All names and data used in examples are fictitious unless otherwise noted.

Any type of software or data file can be packaged for software management using packaging tools from Raynet or those publicly purchasable in the market. The resulting package is referred to as a Raynet package. Copyright for any third party software and/or data described in a Raynet package remains the property of the relevant software vendor and/or developer. Raynet GmbH does not accept any liability arising from the distribution and/or use of third party software and/or data described in Raynet packages. Please refer to your Raynet license agreement for complete warranty and liability information.

Raynet GmbH Germany  
See our website for locations.

[www.raynet.de](http://www.raynet.de)

---

## Table of Contents

<b>Introduction</b> .....	4
<b>New Features</b> .....	5
<b>Improvements &amp; Enhancements</b> .....	11
<b>Resolved Issues</b> .....	13
<b>Known Issues</b> .....	15
<b>System Requirements</b> .....	16
<b>Additional Information</b> .....	17
<b>Need Help?</b> .....	18

# Introduction

RayQC is a rule-based tool used to create and execute test criteria using one or more checklists. It offers various modules to check the quality of applications and software packages all along the Application Lifecycle Management process.

Executing quality checks is possible using manual and / or automated procedures, which may utilize an extendable plug-in interface to integrate individually scripted check routines, tailored exactly towards specific mission scenario needs

RayQC Advanced is an extension module of Raynet's quality control tool i.e. RayQC. This extension is meant to provide packagers with the ability to execute automatic collision and conformity tests on software packages, merge modules, legacy setups, and OS snapshots. Additionally, a package can also be verified for virtualization against standard visualization technologies.

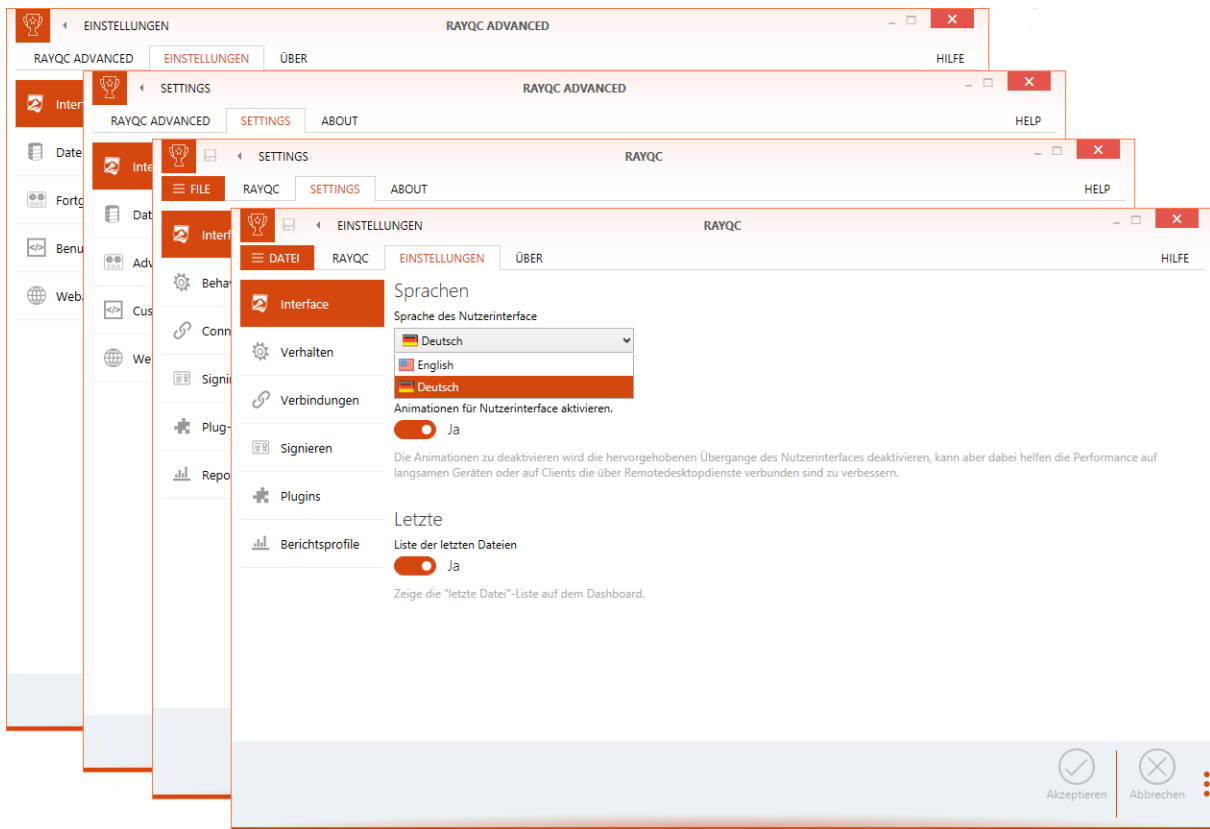
With this solution a user can execute tests on a package or a set of packages, which can either be located on a disk or maintained in the built-in package catalog library. Backed by a SQL Server database, this library maintains imported packages and their historical test results.

The release of RayQC 2.2 presents the user with the ability to directly fix issues that have been found when a System Readiness Check has been performed. Furthermore, RayQC and RayQC Advanced have been localized and are now available in German. Also, with this release, full App-V support and a new migration wizard have been added to RayQC Advanced.

# New Features

## Multilingual User Interface [RTS-1241, RTS-1325, RQC-198]

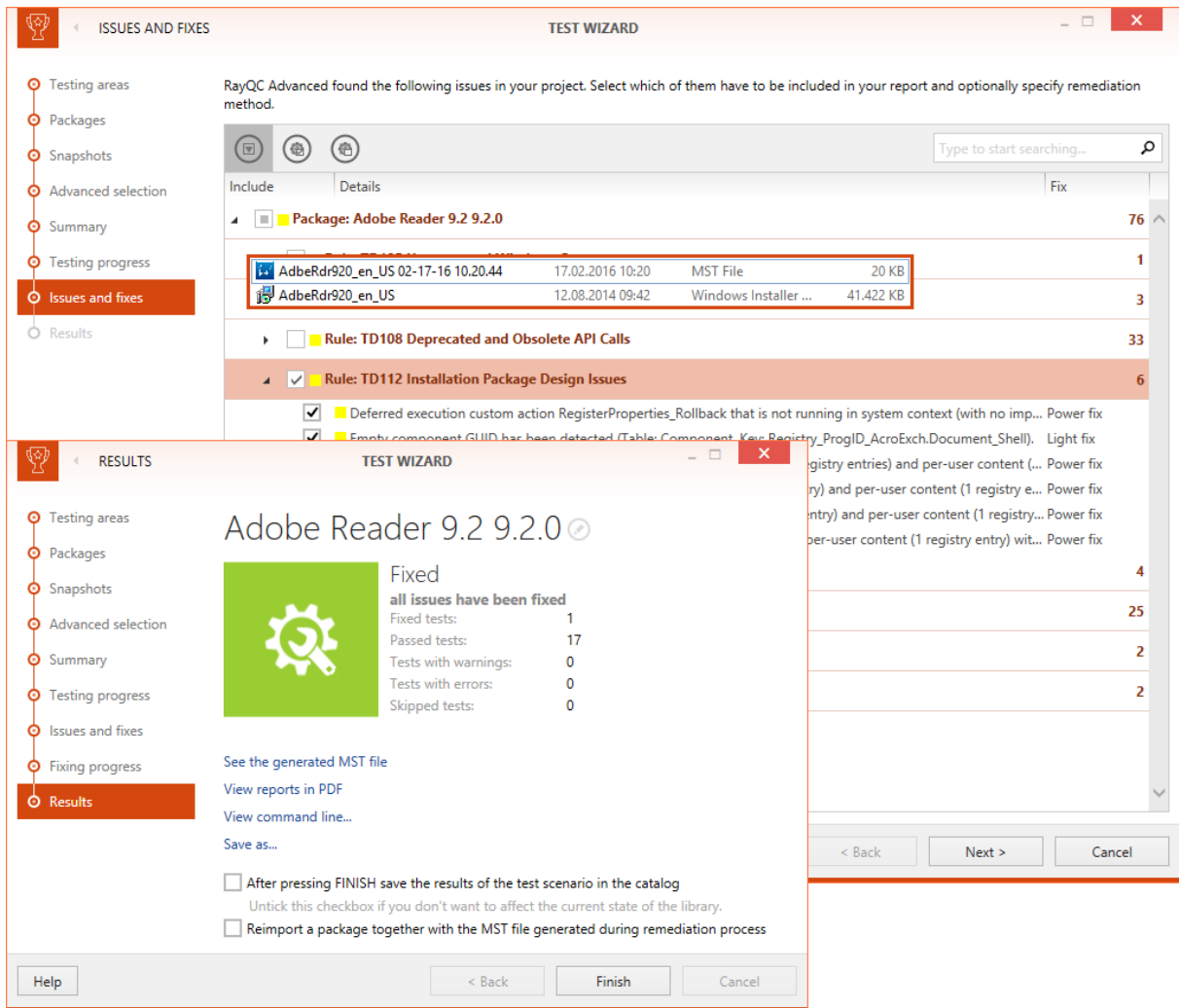
Now that RayQC is available with user interface language packs for English (default) and German, we finally have the initial answer for the repeated user requests we received about this topic. Users simply select their preferred language from the Settings area, restart the application, and benefit from the plus of usability our fully localized UI offers.



At present, extending the available options with other languages is planned for upcoming product release cycles. As the RaySuite development roadmap is user driven to the greatest possible extent, we welcome your suggestions for further language packs that will boost your productivity.

## Remediation functionality for System Readiness Rules [RTS-1082, RTS-1162, RTS-1172]

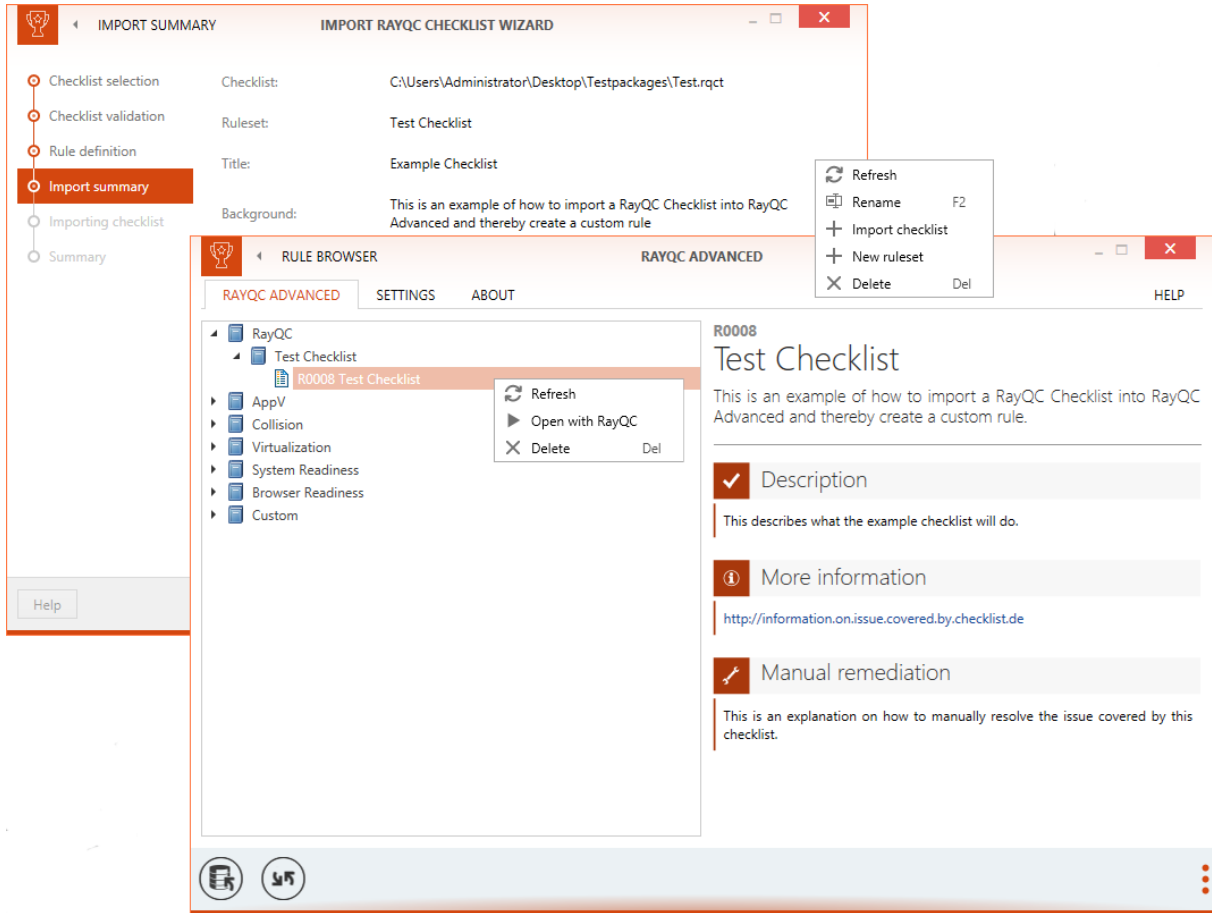
A new remediation functionality is now available for the System Readiness tests. Issues which have been found while testing the System Readiness of a package can be fixed before even leaving the Test Wizard of RayQC Advanced.



After the tests themselves are finished, the Test Wizard will now offer "Power fixes" and "Light fixes" to directly fix issues which have been found during a System Readiness test. The fixes will be applied by generating .mst files for the packages that have been tested. Fixes themselves are divided into "Power fixes" which have a higher impact on the package and should only be used by experienced packagers and "Light fixes" for which no packaging experience is necessary.

## Custom Rules for RayQC Advanced [RTS-1176, RTS-1205, RTS-1206, RTS-1277]

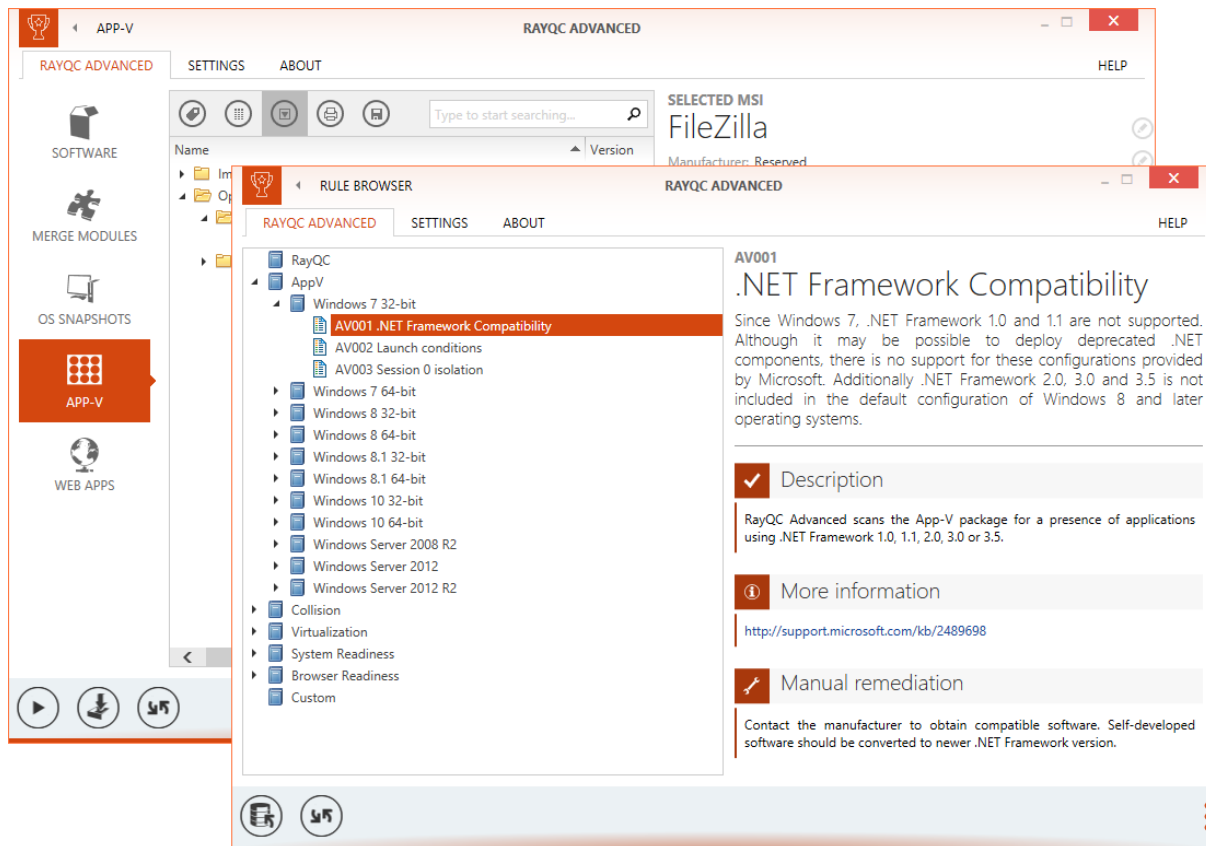
Individual needs can now be covered by creating custom rules for RayQC Advanced. Just create a checklist in RayQC and import it into RayQC Advanced.



Create new rules by importing RayQC Checklists into the RayQC Advanced **RULE BROWSER**. After the checklists have been imported they are available for testing.

## App-V Support [RTS-1032, RTS-1272, RTS-1273, RTS-1275, RTS-1373, RTS-1374, RTS-1375, RTS-1376, RTS-1380, RTS-1433]

With this release, RayQC Advanced now also fully supports the import and testing of App-V packages.

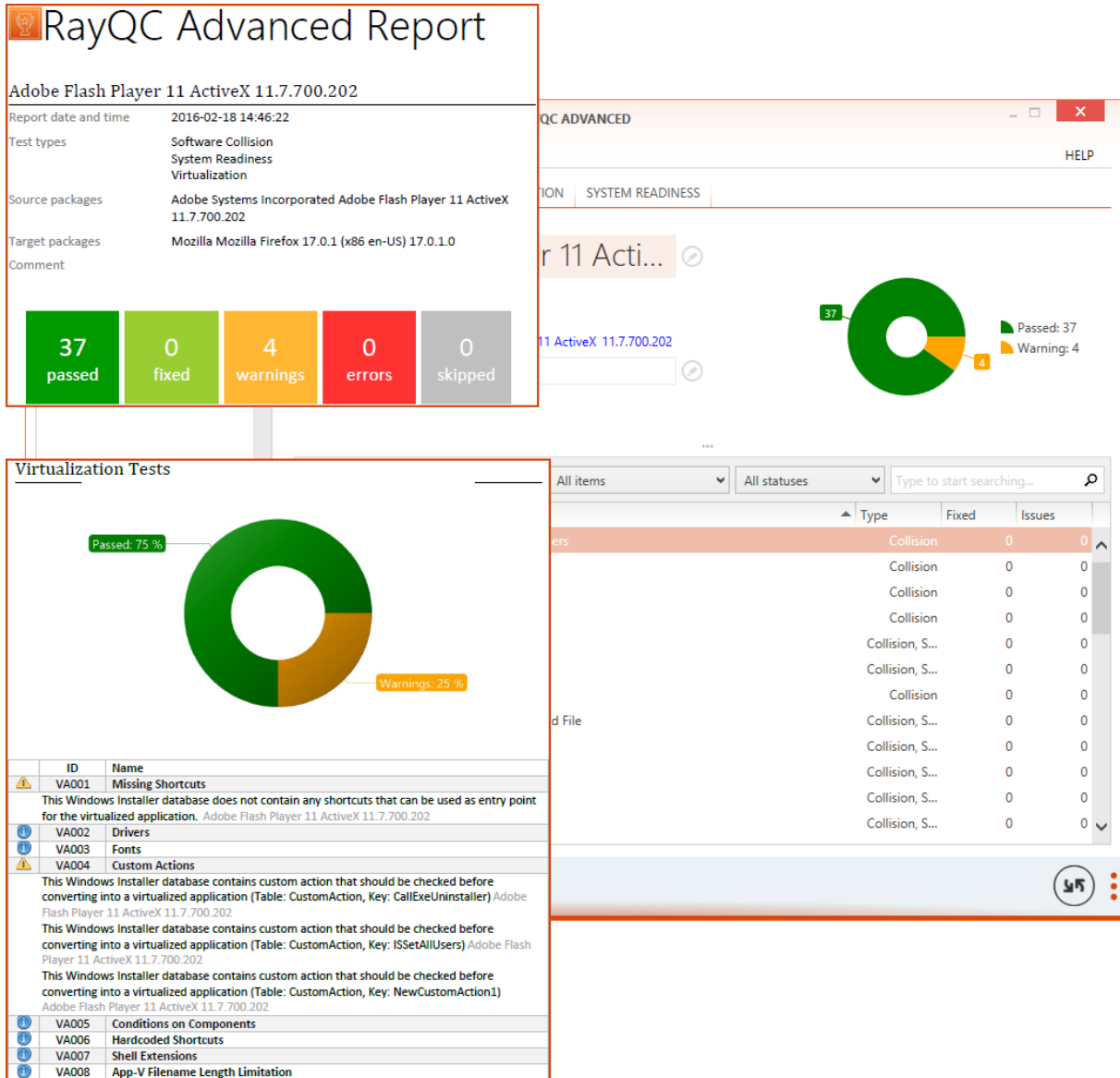


For full App-V support a new area has been added to the library and new App-V specific rules have been added to the **RULE BROWSER**.



## Improved Reports and Reporting [RTS-1235, RTS-1092, RTS-1098, RTS-401, RTS-423, RTS-1035, RTS-1092, RTS-1099, RTS-1174, RTS-1189, RTS-1190, RTS-1208, RTS-1292, RTS-1430]

The whole reporting of RayQC Advanced has been re-engineered and optimized to improve the user experience and the performance of the RayQC Advanced reporting.



**RayQC Advanced Report**

**Adobe Flash Player 11 ActiveX 11.7.700.202**

Report date and time: 2016-02-18 14:46:22

Test types: Software Collision, System Readiness, Virtualization

Source packages: Adobe Systems Incorporated Adobe Flash Player 11 ActiveX 11.7.700.202

Target packages: Mozilla Mozilla Firefox 17.0.1 (x86 en-US) 17.0.1.0

Comment:

37 passed, 0 fixed, 4 warnings, 0 errors, 0 skipped

Summary: Passed: 37, Warning: 4

**Virtualization Tests**

Passed: 75 %, Warnings: 25 %

ID	Name
VA001	Missing Shortcuts
This Windows Installer database does not contain any shortcuts that can be used as entry point for the virtualized application. Adobe Flash Player 11 ActiveX 11.7.700.202	
VA002	Drivers
VA003	Fonts
VA004	Custom Actions
This Windows Installer database contains custom action that should be checked before converting into a virtualized application (Table: CustomAction, Key: CallExeUninstaller) Adobe Flash Player 11 ActiveX 11.7.700.202	
This Windows Installer database contains custom action that should be checked before converting into a virtualized application (Table: CustomAction, Key: ISetAllUsers) Adobe Flash Player 11 ActiveX 11.7.700.202	
This Windows Installer database contains custom action that should be checked before converting into a virtualized application (Table: CustomAction, Key: NewCustomAction1) Adobe Flash Player 11 ActiveX 11.7.700.202	
VA005	Conditions on Components
VA006	Hardcoded Shortcuts
VA007	Shell Extensions
VA008	App-V Filename Length Limitation

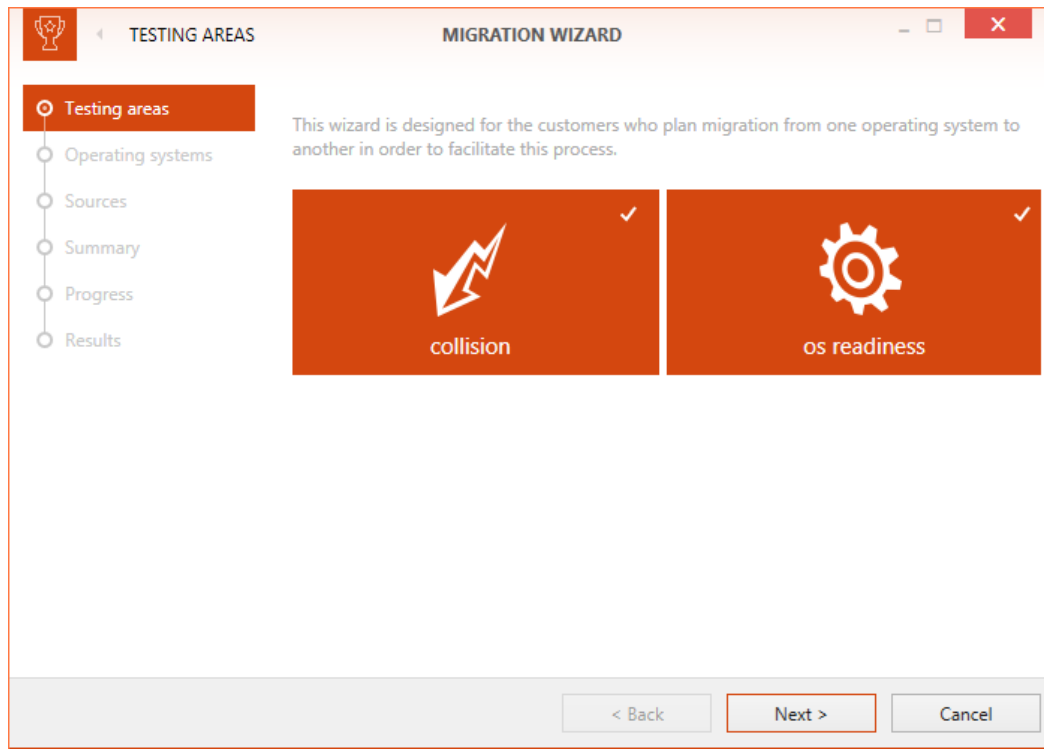
Table with columns: Type, Fixed, Issues

Type	Fixed	Issues
Collision	0	0
Collision	0	0
Collision	0	0
Collision, S...	0	0
Collision, S...	0	0
Collision	0	0
Collision, S...	0	0
Collision, S...	0	0
Collision, S...	0	0
Collision, S...	0	0
Collision, S...	0	0

Furthermore, the report templates have been redesigned. Reports can be saved as .pdf, .docx, .doc, .html, .xps, and .xml files.

## New Migration Wizard [RTS-651]

The new **MIGRATION WIZARD** that has been added to RayQC Advanced has been designed to help with the planning and execution of a migration from one operating system to another. With the **MIGRATION WIZARD**, Collision and OS Readiness checks can be performed against whole sets of packages at once.



It can be easily started by selecting the new **migration** tile from the dashboard.

# Improvements & Enhancements

- Users can now archive a package from the software library. [RTS-887]
- A "collapse/uncollapse all" toggle button has been implemented in the Toolbar. [RTS-890]
- During the start-up of RayQC Advanced, the application now checks if the database has been updated. [RTS-934]
- An option has been added which enables users to launch RayQC, RayQC Advanced, and the Release Notes from the installation wizard after the setup has been completed. [RTS-1001]
- Support for polish characters has been added. [RTS-1040]
- It is now possible to check if the URL filter works correctly. [RTS-1041]
- All pop-up windows appear in the middle of their parent window. [RTS-1048]
- RayQC Advanced styles and resources have been reorganized. [RTS-1058]
- A URL filter/Crawled links dialog has been added. [RTS-1063]
- Longer name/titles which do not fit in the field now end with '!...'. [RTS-1064]
- The **More Information** link in rule number 19 in the Browser Compatibility rule set has been changed. [RTS-1068]
- A new browser compatibility rule named **Binary Elements Behaviours Binding** has been implemented. [RTS-1069]
- The About content in RayQC Advanced has been improved. [RTS-1080]
- It is now possible to switch between single and multi import. [RTS-1081]
- A column chooser has been added into the restore window. [RTS-1087]
- The Issue screen in the Test Wizard has been improved. [RTS-1106]
- It is now possible to expand or collapse all items in the software library browser. [RTS-1120]
- An option to reveal the command line before testing is performed has been added. [RTS-1124]
- **NOT PERFORMED TESTS** has been renamed into **SKIPPED**. [RTS-1125]
- Buttons for fixes selection in the issue page of the Test Wizard have been added. [RTS-1140]
- The database schema has been improved. [RTS-1169]

- The previously existing collision rules have been improved. [RTS-1199]
- Testing the severity in the collision rules has been improved. [RTS-1202]
- Pages in the Test wizard have been reordered to improve the user experience. [RTS-1203]
- The Test wizard now automatically imports packages during testing. [RTS-1204]
- The migration engine has been improved to allow migration from XML report data into the table structure in the database. [RTS-1208]
- The virtualization rule VA004 has been improved to exclude some custom actions. [RTS-1303]
- It is now possible to create custom properties and assign those custom properties to a package. [RTS-1309]
- The RayQC Advanced dashboard view in offline mode has been changed to match the behavior of other Raynet products. [RTS-1369]
- The testing areas page in the Test wizard has been improved. [RTS-1381]
- The exception handling has been improved. [RTS-1431]
- It is now possible to perform compatibility and collision tests in RayQC via the RayQC Advanced plugin. [RQC-432]
- A tile which enables users to call RayQC Advanced from RayQC has been added to the RayQC dashboard. [RQC-459]
- A sample checklist for RayQC Advanced plugin usage has been added to the **GET STARTED** tab in the RayQC **ABOUT** screen. [RQC-469]

# Resolved Issues

The following issues from the previous version of RayQC have been resolved in this release:

- Start of application takes much time [RTS-856]
- Update RaySuite common library and resource dictionary usage [RTS-1044]
- Highlight the destination folder while drop-down package [RTS-1100]
- Txx13 - wrong results of fixing in the Test Wizard and Report [RTS-1125]
- Improve the Package Family description within the user guide [RTS-1129]
- Importing of packages fails in certain situations [RTS-1166]
- Cannot import package [RTS-1195]
- Change character encoding in XML checks [RTS-1213]
- Improve RayQC Advanced installer to display information about the status of installation [RTS-1217]
- [Performance] Sample checklist stops during test [RTS-1227]
- Information in "Custom"-tab in Library [RTS-1231]
- Question about saving report files [RTS-1244]
- Double downloading in Multiimport [RTS-1264]
- Information in "Related packages"-tab in Library [RTS-1269]
- Log information about missing DLL's at application startup [RTS-1324]
- Packages page in Test Wizard should be improved to display selected packages [RTS-1345]
- Vague error message on checklist loading error [RQC-428]
- Savings Settings [RQC-436]
- Unable to create or open a checklist (combined RayQC + Advanced installer) [RQC-437]
- When clicking on help in the dashboard, the helpfile doesn't open [RQC-440]
- RayQC -help should be shown differently [RQC-447]
- [known issues] Opening RayQC Advanced report [RQC-450]

- `.rqct` and `.rqcp` files do not have RayQC icon [RQC-455]
- Implement checking of license term on application startup [RQC-458]
- Opening sample project and template from About > Get Started does not work [RQC-460]
- Webapps in Test [RQC-464]
- Black Bypass message [RQC-465]
- JPG Multiselection in Supporting Files [RQC-466]
- Incorrect logging configuration [RQC-471]
- License conflict [RQC-474]
- Changed settings are saved without acceptance [RQC-484]
- Progressbar do not change status [RQC-485]
- Change settings screen to fit new screen pattern [RQC-490]
- Color in plugins [RQC-492]
- False error message by reject checklist without signature [RQC-499]

# Known Issues

The following list is a summary of known issues present in RayQC 2.2.

- Install Wizard: Next button when entering order number is grayed out [RTS-808]
- Log file about Webapps missing description [RTS-1042]
- Empty board when searching for packages in searchbox [RTS-1165]
- Empty list of given systems on the Snapshot step [RTS-1180]
- Missing information that no packages are connected with tag [RTS-1255]
- License update during installation failed [RTS-1260]
- Problem with rule Txx07 / Txx1 if user used already prepared Environment tests and chose more than one system [RTS-1400]
- [TestWizard] Progressbar does not stop at 100 % [RTS-1405]
- Different language in RayQC Advanced after importing or testing checklist [RTS-1480]
- Incorrect error message when trying to import checklist with RayQC not licensed [RTS-1484]
- Missing German translation for Reports Dashboard [RTS-1490]

# System Requirements

## Hardware Requirements

### Minimal

- CPU Pentium IV / Core2 processor
- 2 GB RAM
- 1 GB free hard disk
- 1280x1024 screen resolution

### Recommended

- CPU Intel Core i5 or i7
- 8GB RAM
- 40 GB free hard disk (software library usage)

## Supported OS

- Windows 10 x64 (up to build 10240)
- Windows 10 (up to build 10240)
- Windows 8.1 x64
- Windows Server 2012 R2
- Windows 8
- Windows 8 x64
- Windows Server 2012
- Windows 7
- Windows 7 x64
- Windows Server 2008 SP1
- Windows Server 2008 R2
- Windows Vista SP1
- Windows Vista x64
- Windows XP Professional SP3
- Windows Server 2003 SP1 x64

## Prerequisite Software

- .Net 4.0 Full (32bit or 64bit)
- Windows Management Framework (including Windows PowerShell 2.0, WinRM 2.0, and BITS 4.0)  
Please verify if the named or later versions are available on your device before using internal or external plugins in checklists.  
For further details and download resources, visit <http://support.microsoft.com/en-us/kb/968929>.
- Microsoft SQL Server Express 2008 or higher is required for RayQC Advanced. The server can either be locally hosted or on a remote machine.



### Be aware:

In order to be able to use external plugins with RayQC, it has to be ensured that the PowerShell version supported by the device that hosts the application matches the PowerShell version of the actual plugin script. It is highly recommended to synchronize the PowerShell version among all devices that are assigned for QA execution to prevent compatibility issues in the first place.



## Additional Information

Further information regarding RayQC can be found in several resources.

- The *Operations Supplement* provides information about third-party software packages and libraries redistributed with RayQC.
- The *Installation Guide* provides IT professionals with a guide on how to install RayQC for the first time.
- The *User Guide* provides detailed information about both, the RayQC Checklist management tool and the RayQC Collision management tool.
- The *Get Started Guide* provides a new user with an introduction and tips on the use of the RayQC Checklist management tool.
- The *Get Started Advanced Module Guide* provides a new user with an introduction and tips on the use of the RayQC Collision management tool.
- The product website [www.rayqc.de](http://www.rayqc.de) provides information about the product, news, and support.
- Raynet and its partners offer a range of training courses that can also be customized to meet your requirements. For more information on these courses, speak with your Raynet consultant.

# Need Help?

## Request RayQC support

Our Raynet support team gladly assists you on any question or issue you encounter regarding RayQC. Feel free to sign in and open incidents via our Raynet support panel, or by simply sending an email to [support@raynet.de](mailto:support@raynet.de) if you are an already registered Raynet customer.

## Join the RaySuite community

The RaySuite community resides within our Knowledge Base: <https://raynet.de/Support/>. Once you have signed up for access to the Raynet support panel, you automatically have access to the Knowledge Base, too. You will surely come to a point where you would love to suggest a new feature for the future development of RayQC. Maybe you need to find some tips & tricks to hit your target right. the RaySuite community is your place for discussing such topics, for sharing and expanding your own experience.

## Contact your Raynet sales representative

Our sales team is the right contact for any license or edition question you might encounter. Would you like to benefit from a professional RayQC training? Ask for dates and locations to find the right training to meet your needs. You are highly welcome to step in contact via [sales@raynet.de](mailto:sales@raynet.de).

# Software Packaging Quality Control

RayQC is part of the RaySuite<sup>®</sup>.

More information online  
[www.raynet.de](http://www.raynet.de)

## Raynet GmbH

Technologiepark 20  
33100 Paderborn  
Germany

T +49 5251 54009-0  
F +49 5251 54009-29

General information: [info@raynet.de](mailto:info@raynet.de)  
Product support: [support@raynet.de](mailto:support@raynet.de)