

# 10.0 Release Notes





## Table of Contents

<b>Introduction</b> .....	3
<b>Deployment Manager</b> .....	3
New Features in Deployment Manager .....	3
<b>Security Manager</b> .....	6
New Features in Security Manager .....	6
<b>OS Deployment Manager</b> .....	8
New Features in OS Deployment Manager .....	8
Resolved Issues .....	9
<b>System Requirements</b> .....	9
Hardware requirements .....	9
Pre-requisite software .....	11
<b>Compatibility</b> .....	16
Compatible components .....	16
<b>Links</b> .....	16

# Introduction

RayManageSoft 10.0 provides a complete set of products for software and operating system (OS) deployment, as well as security and patch management. The software includes four components for deploying, patching and securing applications and operating systems, all built on a common infrastructure that includes IT asset discovery, inventory and software asset management. The RayManageSoft client-centric architecture leverages existing IT hardware to speed up implementation and reduce costs for mid-size and large organizations.

## Deployment Manager

Deployment Manager is the component of RayManageSoft that transforms desktops, servers, and mobile devices into self-managing, smart devices that continuously align with enterprise IT policies.

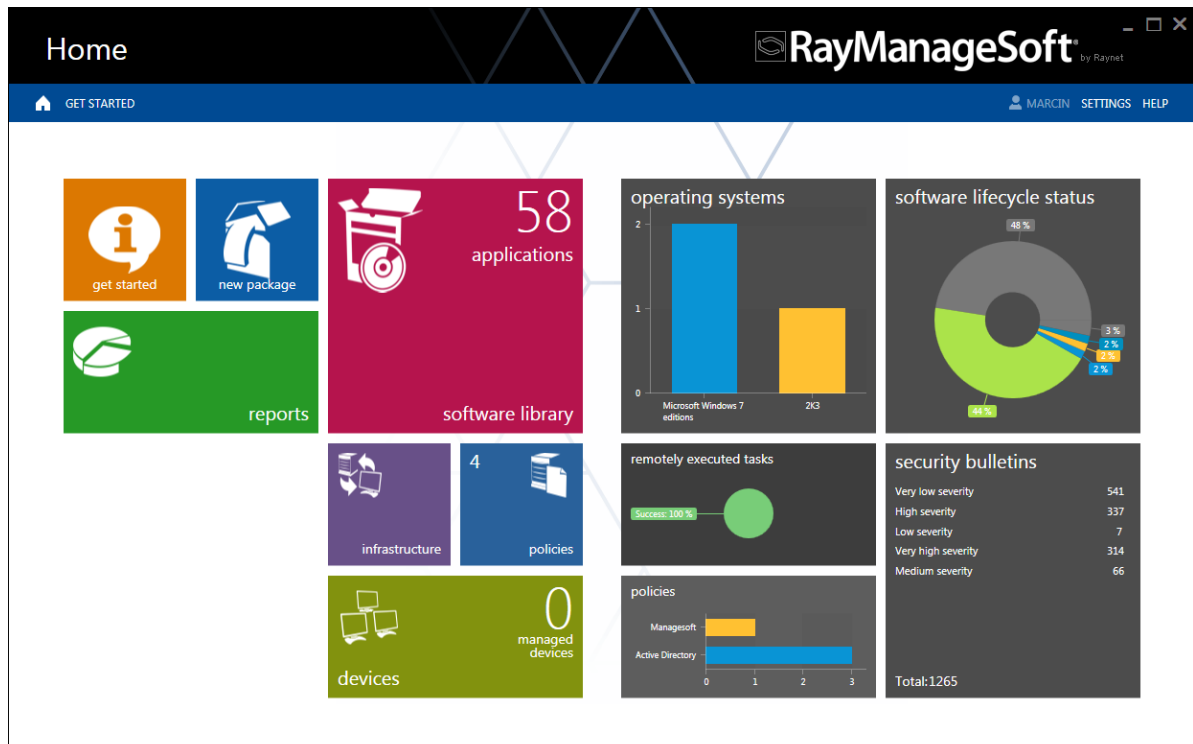
### New Features in Deployment Manager

#### Enhanced Admin Server user interface

RayManageSoft 10.0 is available as stand-alone product as well as having the ability to be integrated into the RaySuite solution powered by RayFlow. Its new administration server user interface provides a variety of improvements to ease access, overview and handling of data. Deployment Manager has a flat Windows 8-inspired style and uses a whole set of unified presentation elements to support users with an elaborate, responsive and comfortable interface.

#### New view: Dashboard

On startup RayManageSoft 10.0 displays a configurable summary of statistics and quick access points to key functions.



Built from XML-based tiles it provides access to both dynamically updated key figures and quick links to underlying content. Due to its flexible design the dashboard is highly customizable and enables the integration of custom data providers.

## New user interface: Software (former “Software Library”)

The former menu item "Packaging" has been relocated to the Software menu. Packages are displayed in a dynamic grid view, consisting of a package list to the left of the display and a sidebar with detailed information on a selected package on the right. Data displayed in the tabular list can easily be sorted, filtered, grouped, printed and exported, whereas the tree view is designed for a clear drilldown of filtered and sorted package data.

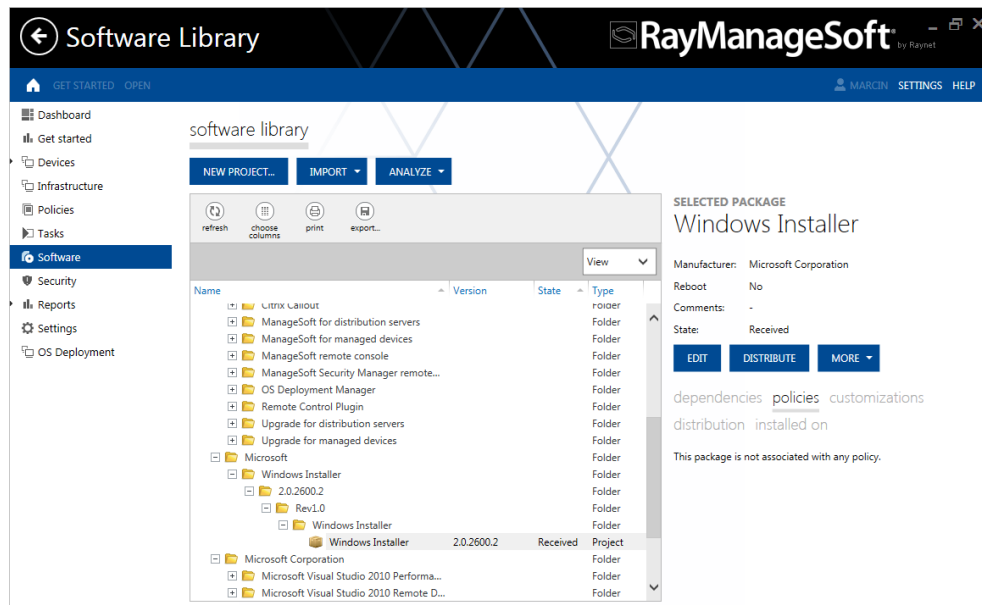
Basic library actions, such as importing, analyzing or receiving packages, are available from the action bar above the grid.

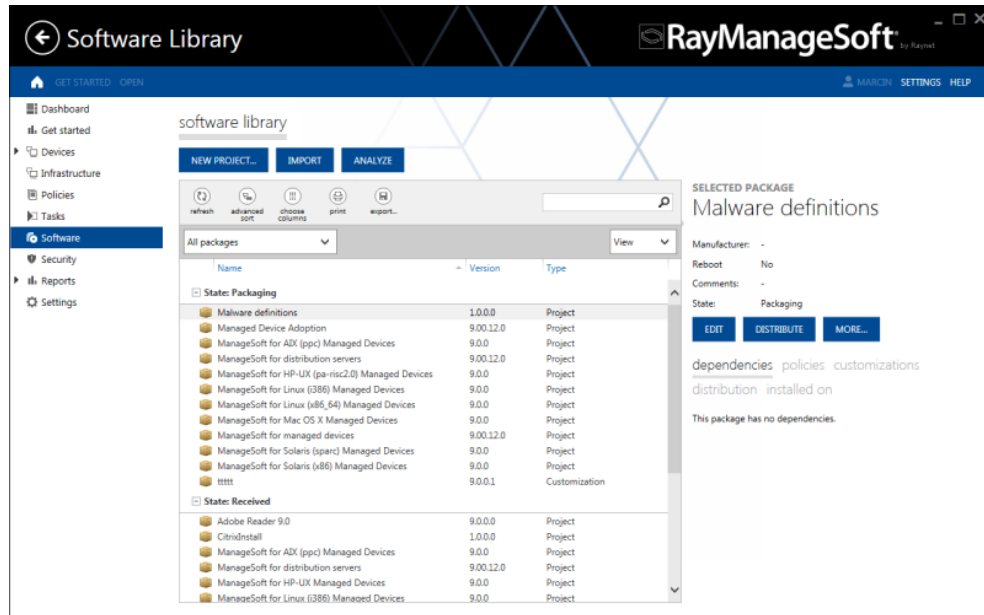
Within the sidebar on the right users can either display properties of a single package (including the dependencies, policies, customizations, distributions and installations recorded in the RayManageSoft database), or take a look at a status distribution diagram for selections of several packages.

The full set of package properties can be edited – either for a single package or several packages at the same time. Compare changes by simply placing dialogues side by side. The package editor has also been enhanced to display nested dependencies.

Adding clarity to the edition of package properties, groups were built that can be handled within one dialogue. For example: registry, files, shortcuts, services and other similar items have been grouped under “resources”.

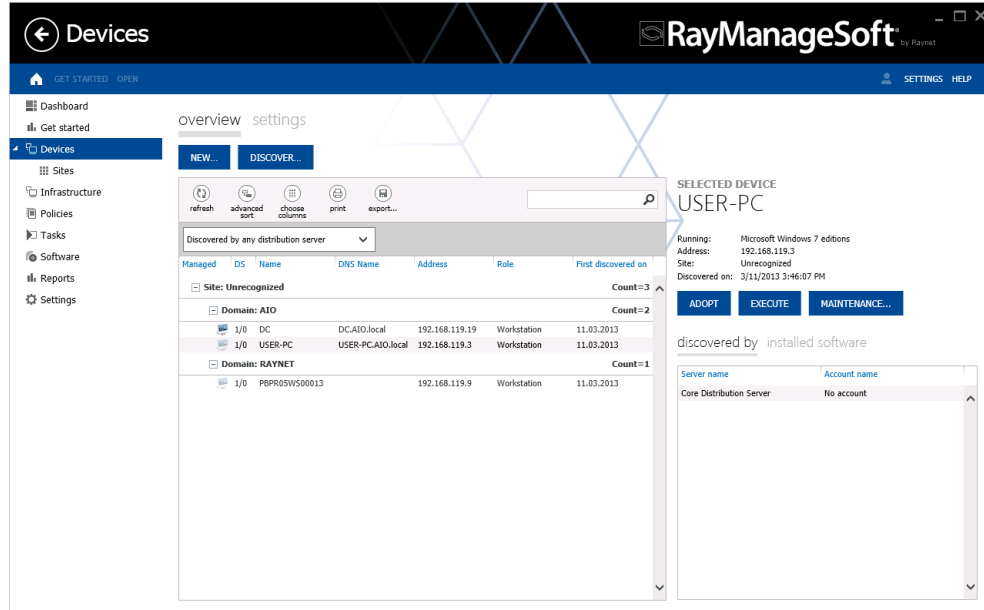
Architectures, languages and environments have been grouped to “targets”.





### New user interface: Devices (former “Discovery and Adoption”)

Devices are displayed in a dynamic grid view, consisting of a device list on the left side of the view and a sidebar with detailed information of a selected device on the right. The information displayed includes the distribution servers that discovered the device, the credentials that were used and an inventory based list of the currently installed software. Data displayed in the list can easily be sorted, filtered, grouped and printed.



To configure sites, RayManageSoft offers a separate snap-in, available from the submenu of the devices node.

### New user interface: Remote execution (former “Remote Task Manager”)

Tasks are displayed in a dynamic grid view, consisting of a list on the left side of the display and a sidebar with detailed information of a selected task on the right. This includes distribution servers and devices affected by the task. Data displayed in the list can easily be sorted, filtered, grouped, printed and exported. Execution results are easily accessible by simply hovering over, or clicking on a task.

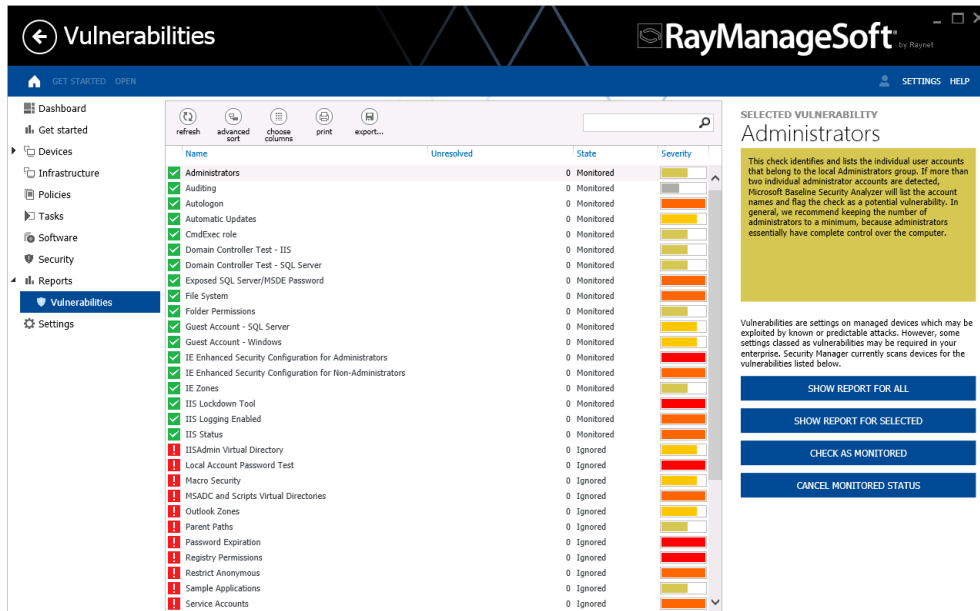
## New user interface: Policies (former "Policy")

Editing of policies has been improved by allowing for bulk operations. Displayed data can easily be sorted, filtered, grouped and printed. Available policies are displayed as a list on the left-hand side, while applications of a currently selected policy are displayed on the right side. To reduce the list of policies, the commonly used ones, you can exclude hidden or empty policies from the current view by using a newly added filter function. As different operators have different requirements on which policies need to be displayed, filtering policies is a user specific setting. The filter is set by using a new option from the context menu of policy list items.

## New user interface: Reports (former "Reporting")

RayManageSoft 10.0 will replace Internet Explorer WebControls with a new jQuery component for providing reports. This revision does not only release customers from installing the deprecated WebControls, but also improves data representation options, security aspects and performance.

Vulnerabilities have been moved from the Security Patch Manager to Reports. Vulnerabilities are displayed in a dynamic grid view, consisting of a list on the left hand side of the display and a sidebar with detailed information on a selected vulnerability on the right. The sidebar contains possible actions that can be carried out on the selected item from the list. Data displayed in the list can easily be sorted, filtered, grouped and printed.



Name	Unresolved	State	Severity
Administrators	0	Monitored	High
Auditing	0	Monitored	Low
Autologon	0	Monitored	Low
Automatic Updates	0	Monitored	Low
CmExec role	0	Monitored	Low
Domain Controller Test - IIS	0	Monitored	Low
Domain Controller Test - SQL Server	0	Monitored	Low
Exposed SQL Server/MSDE Password	0	Monitored	Low
File System	0	Monitored	Low
Folder Permissions	0	Monitored	Low
Guest Account - SQL Server	0	Monitored	Low
Guest Account - Windows	0	Monitored	Low
IE Enhanced Security Configuration for Administrators	0	Monitored	Low
IE Enhanced Security Configuration for Non-Administrators	0	Monitored	Low
IE Zones	0	Monitored	Low
IIS Lockdown Tool	0	Monitored	Low
IIS Logging Enabled	0	Monitored	Low
IIS Status	0	Monitored	Low
IISAdmin Virtual Directory	0	Ignored	Low
Local Account Password Test	0	Ignored	Low
Macro Security	0	Ignored	Low
MSADC and Scripts Virtual Directories	0	Ignored	Low
Outlook Zones	0	Ignored	Low
Parent Paths	0	Ignored	Low
Password Expiration	0	Ignored	Low
Registry Permissions	0	Ignored	Low
Restrict Anonymous	0	Ignored	Low
Sample Applications	0	Ignored	Low
Service Accounts	0	Ignored	Low

# Security Manager

Security Manager protects organizations by automatically monitoring the authoritative sources of patch data for Windows devices. It provides alerts for new patches and streamlines the process of deploying patches to devices across the enterprise. Flexible workflows allow patch deployment to the entire enterprise, specific organizational units or individual users and computers.

## New Features in Security Manager

### Enhanced Admin Server user interface

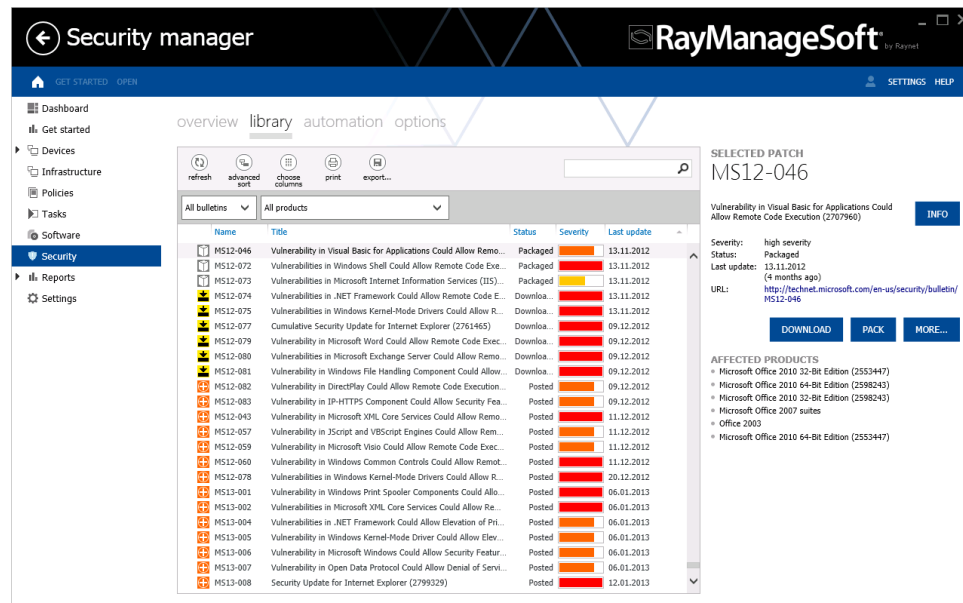
As an optional extension to RayManageSoft 10.0 Deployment Manager, Security Manager benefits from the new administration server user interface, which provides a variety of improvements to ease access, overview and

handling of data.

Security Manager has a flat Windows 8-inspired style and uses a whole set of unified presentation elements to support users with an elaborate, responsive and comfortable interface. Below the overall header, essential views are split into three areas of activity: Main menu, content and a context-sensitive sidebar.

## New user interface: Security (former "Security Patch Manager")

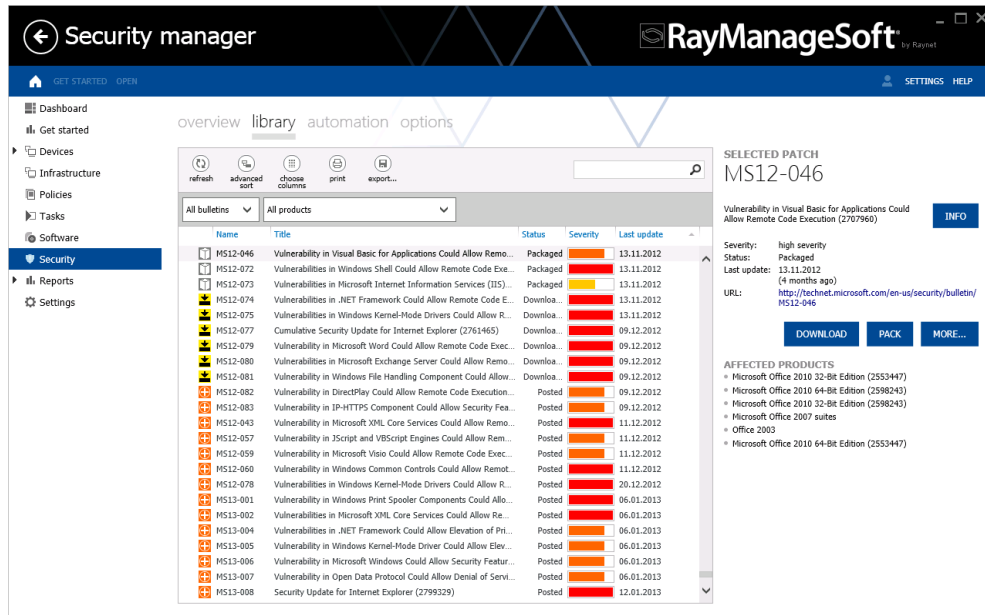
Bulletins are displayed in a dynamic grid view, consisting of a list on the left and a sidebar with detailed information on a selected bulletin on the right. They can be handled by bulk operations to speed up repeating tasks of security management. The main grid view combines all necessary interfaces for downloading, progressing and approving bulletins. Displayed data is sortable, filterable, exportable, printable and multi-level groupable.



## Enhanced Patch Management

RayManageSoft 10.0 Security Manager introduces automated downloading, packaging, and distribution of patches. This update significantly improves the performance of re-occurring security patch management tasks.

By defining significant events as triggers for automated patch distribution, administrators reduce reaction times while keeping full overview on system activity with advanced logging functions.



# OS Deployment Manager

OS Deployment Manager automates the process of deploying and installing Microsoft Windows® XP, Vista, 7, 8, Windows Server® 2003, 2008 and 2012 operating systems on computers throughout the IT estate, even with limited connectivity or IT support. It eases the migration from one OS version to another and is an essential tool for a Windows 8 deployment.

## New Features in OS Deployment Manager

### Advanced OS support

RayManageSoft 10.0 adds support for deploying Microsoft® Windows Server 2012 and Windows 8 by providing ADK technology to prepare a set of images ready for deployment. With the 10.0 release, deployment managers can actually generate native 64bit WinPE images.

Combined with the new environment options for software package deployment, companies running RayManagesoft 10.0 are fully equipped for upgrading their system to the latest generation of Windows operating systems.

### Hardware profile management

Hardware profiles define sets of drivers for typical device types. Deploying these sets to site servers is a basic prerequisite for automatic driver installation during OS rollouts. Hardware profiles include information about installable operating systems and architectures.

### Mapped driver deployment

Capturing mappings between hardware profiles, OS images and devices enables driver assignment before the deployment of operating systems. Due to this new feature, the preparation of workstations for software



package deployment is accomplished in one single step, including OS and driver installation.

The utilization of name mapping reduces the execution time for OS deployment rollouts, and supports the administrative objective of persistent information management.

## Site server configuration by architecture

With OS Deployment Manager 10.0 site servers can be configured to provide 32 and / or 64 bit OS images. The image configuration is used for PXE booting and server initiated builds.

## Policy-based image preparation

OS Deployment Manager Images can be filled with policy based packages before deployment. The integration of packages into WIM / OS images saves significant amounts of network traffic and deployment time during image transfer from distribution server to managed device. The installation process is also accelerated.

## Enhanced Linux support

RayManageSoft 10.0 for managed devices is available as native x64 application for Linux.

## Answer file preparation

Unattended OS installations make use of answer files, which include information to emulate manual user input of attended installations. OS Deployment Manager 10.0 supports the configuration of unattended installation procedures by providing a step-by-step wizard on answer file preparation. During the OS image import process<sup>1</sup>, users can decide to apply a RayManageSoft answer file, the answer file that is available from the import sources, or no answer file at all. Once the image import is finished, answer file contents are editable via wizard functionality.

## Resolved Issues

### Image drive selection for OS installation

Prior OS Deployment Manager Versions had issues with image drive options that could cause errors during the installation of Windows operating systems later than XP. These issues are fixed in OS Deployment Manager 10.0.

# System Requirements

## Hardware requirements

### Core servers

- Minimum RAM: 2GB
- Recommended RAM: 4GB or higher

---

<sup>1</sup> For Windows operating systems later than XP

- 
- Minimum disk space: 1GB

### **Reports servers**

- Minimum RAM: 2GB
- Recommended RAM: 4GB or higher
- Minimum disk space: 1GB

### **Data servers**

- Minimum RAM: 2GB
- Recommended RAM: 4GB or higher
- Minimum disk space: 1GB (40GB for systems including OS Deployment Manager)

### **Site servers**

- Minimum RAM: 1GB
- Recommended RAM: 2GB or higher
- Minimum disk space: 100MB

### **Remote console**

- Minimum RAM: 1GB
- Recommended RAM: 2GB or higher
- Minimum disk space: 700MB

### **Distribution servers**

- Minimum RAM: 1GB
- Recommended RAM: 2GB or higher
- Minimum disk space: 1GB (20GB for systems including OS Deployment Manager)

### **Managed devices**

- Minimum RAM: 512MB
- Recommended RAM: 1GB or higher
- Minimum disk space: 300MB

## Pre-requisite software

The table below describes the supported operating systems and software pre-requisites of RayManageSoft 10.0 at the time of release.

Component	Operating system	Pre-requisite software
Core Server	<ul style="list-style-type: none"> <li>Windows 2012 Server</li> <li>Windows 2008 R2 Server<sup>2</sup></li> <li>Windows 2008 Server SP1-SP2</li> <li>Windows 2008 Server x64 SP1-SP2<sup>2</sup></li> <li>Windows 2003 R2 Server</li> <li>Windows 2003 R2 Server x64<sup>2</sup></li> <li>Windows 2003 Server SP2</li> <li>Windows 2003 Server x64 SP2<sup>2</sup></li> </ul>	<ul style="list-style-type: none"> <li>.NET Framework 4.0</li> <li>Internet Explorer 7.0 to 10.0</li> <li>Microsoft Internet Information Services 6.0 to 8.0</li> </ul> <p><u>For OS Deployment Manager:</u></p> <ul style="list-style-type: none"> <li>Microsoft Windows Automated Installation Kit (WAIK) for Windows versions from XP to 7</li> <li>Windows Assessment and Deployment Kit (ADK) for Windows 8</li> <li>Microsoft Windows Deployment Services (WDS - required only if you intend to use PXE support)</li> <li>Microsoft Sysprep</li> <li>Symantec Ghost Corporate Edition 7.5 or 8.0 Ghost Server (required only if Symantec Ghost is to be used for imaging)</li> <li>Microsoft Excel 2000 or later (required only for asset discovery import from Excel)</li> </ul>
Remote Console	<ul style="list-style-type: none"> <li>Windows 2012 Server</li> <li>Windows 2008 R2 Server</li> <li>Windows 2008 Server SP1-SP2</li> <li>Windows 2008 Server x64 SP1-SP2</li> <li>Windows 2003 R2 Server</li> <li>Windows 2003 R2 Server x64</li> <li>Windows 2003 Server SP2</li> <li>Windows 2003 Server x64 SP2</li> <li>Windows 8</li> <li>Windows 8 x64</li> <li>Windows 7</li> <li>Windows 7 x64</li> <li>Windows Vista</li> </ul>	<ul style="list-style-type: none"> <li>.NET Framework 4.0</li> <li>Internet Explorer 7.0 to 10.0</li> </ul>

Component	Operating system	Pre-requisite software
	<ul style="list-style-type: none"> <li>Windows Vista x64</li> <li>Windows XP Professional</li> <li>Windows XP Professional x64</li> </ul>	
Web Browser	<ul style="list-style-type: none"> <li>Internet Explorer 7.0 to 10.0</li> <li>Firefox 10.0 to 17.0</li> </ul>	
Data Server	<ul style="list-style-type: none"> <li>Windows 2012 Server</li> <li>Windows 2008 R2 Server</li> <li>Windows 2008 Server SP1-SP2</li> <li>Windows 2008 Server x64 SP1-SP2</li> <li>Windows 2003 R2 Server</li> <li>Windows 2003 R2 Server x64</li> <li>Windows 2003 Server SP2</li> <li>Windows 2003 Server x64 SP2</li> </ul>	<ul style="list-style-type: none"> <li>SQL Server 2005 SP2 to SP4 with Reporting Services</li> <li>SQL Server 2008 with Reporting Services</li> <li>SQL Server 2008 SP1 with Reporting Services</li> <li>SQL Server 2008 R2 with Reporting Services</li> <li>SQL Server 2012 with Reporting Services</li> <li>SQL Server Tools and Workstation Components 2005, SQL Server 2008, SQL Server 2012 Features: Client Tools Connectivity, Management Tools</li> <li>.NET Framework 4.0</li> </ul>
Reports Server	<ul style="list-style-type: none"> <li>Windows 2012 Server<sup>2</sup></li> <li>Windows 2008 R2 Server<sup>2</sup></li> <li>Windows 2008 Server SP1-SP2</li> <li>Windows 2008 Server x64 SP1-SP2<sup>2</sup></li> <li>Windows 2003 R2 Server</li> <li>Windows 2003 R2 Server x64<sup>2</sup></li> <li>Windows 2003 Server SP2</li> <li>Windows 2003 Server x64 SP2<sup>2</sup></li> </ul>	<ul style="list-style-type: none"> <li>.NET Framework 4.0</li> <li>Internet Explorer 7.0 to 10.0</li> <li>Reporting Services (same release as the database)</li> <li>Internet Information Services 6.0 to 8.0</li> </ul>
Site Server  (OS Deployment Manager only)	<ul style="list-style-type: none"> <li>Windows 2012 Server</li> <li>Windows 2008 R2 Server</li> <li>Windows 2008 Server SP1-SP2</li> <li>Windows 2008 Server x64 SP1-SP2</li> <li>Windows 2003 R2 Server</li> <li>Windows 2003 R2 Server x64</li> <li>Windows 2003 Server SP2</li> <li>Windows 2003 Server x64 SP2</li> </ul>	<ul style="list-style-type: none"> <li>Microsoft Windows Automated Installation Kit (WAIK) for Windows versions from XP to 7</li> <li>Windows Assessment and Deployment Kit (ADK) for Windows 8</li> <li>Microsoft Windows Deployment Services (WDS required only if you intend to use PXE support)</li> <li>Symantec Ghost Corporate Edition 7.5 or 8.0 Ghost Server (required only if Symantec</li> </ul>

Component	Operating system	Pre-requisite software
	<ul style="list-style-type: none"> <li>• Windows 8</li> <li>• Windows 8 x64</li> <li>• Windows 7</li> <li>• Windows 7 x64</li> <li>• Windows Vista</li> <li>• Windows Vista x64</li> <li>• Windows XP Professional</li> <li>• Windows XP Professional x64</li> </ul>	<p>Ghost is to be used for imaging<sup>3)</sup></p> <ul style="list-style-type: none"> <li>• Internet Explorer 7.0 to 10.0</li> </ul>
<b>Managed Device</b>	<ul style="list-style-type: none"> <li>• Windows 2012 Server</li> <li>• Windows 2008 R2 Server Core</li> <li>• Windows 2008 R2 Server</li> <li>• Windows 2008 Server Core</li> <li>• Windows 2008 Server</li> <li>• Windows 2008 Server Core x64</li> <li>• Windows 2008 Server x64</li> <li>• Windows 2003 R2 Server</li> <li>• Windows 2003 R2 Server x64</li> <li>• Windows 2003 Server SP2</li> <li>• Windows 2003 Server x64 SP2</li> <li>• Windows 8</li> <li>• Windows 8 x64</li> <li>• Windows 7</li> <li>• Windows 7 x64</li> <li>• Windows Vista</li> <li>• Windows Vista x64</li> <li>• Windows XP Professional</li> <li>• Windows XP Professional x64</li> <li>• Windows XP Home</li> </ul> <p><u>For Deployment Manager:</u></p> <ul style="list-style-type: none"> <li>• RedHat Linux 8 and 9</li> <li>• RedHat Enterprise Linux 3, 4, 5, 6, 6.1</li> <li>• CentOS 4, 5, 6</li> </ul>	<ul style="list-style-type: none"> <li>• Internet Explorer 7.0 to 10.0 (Windows platforms only)</li> <li>• Java SE Runtime Environment (build 1.6.0) (Mac OS X 10.7 only)</li> </ul>

Component	Operating system	Pre-requisite software
	<ul style="list-style-type: none"> <li>• Fedora 6 - 11</li> <li>• SuSE Professional/OpenSuSE 9, 10, 11</li> <li>• SuSE Enterprise Server (SLES) 9, 10, 11</li> <li>• Solaris 9, 10, 11 (Intel)</li> <li>• Solaris 8, 9, 10, 11 (SPARC)</li> <li>• Mac OS X 10.3, 10.4, 10.5, 10.6, 10.7</li> <li>• AIX 5.2, 5.3, 6.1, 7.1</li> <li>• HP-UX 11.00, 11i, 11i v2, 11i v3</li> </ul>	
Packaging Server	<ul style="list-style-type: none"> <li>• Windows 2012 Server</li> <li>• Windows 2008 R2 Server</li> <li>• Windows 2008 Server</li> <li>• Windows 2008 Server x64</li> <li>• Windows 2003 R2 Server</li> <li>• Windows 2003 R2 Server x64</li> <li>• Windows 2003 Server SP2</li> <li>• Windows 2003 Server x64 SP2</li> <li>• Windows 8</li> <li>• Windows 8 x64</li> <li>• Windows 7</li> <li>• Windows 7 x64</li> <li>• Windows Vista</li> <li>• Windows Vista x64</li> <li>• Windows XP Professional</li> <li>• Windows XP Professional x64</li> </ul>	<ul style="list-style-type: none"> <li>• .NET Framework 4.0</li> <li>• Internet Explorer 7.0 to 10.0</li> </ul>
Snapshot Wizard	<ul style="list-style-type: none"> <li>• Windows 2012 Server</li> <li>• Windows 2008 R2 Server</li> <li>• Windows 2008 Server</li> <li>• Windows 2008 Server x64</li> <li>• Windows 2003 R2 Server</li> <li>• Windows 2003 R2 Server x64</li> <li>• Windows 2003 Server SP2</li> <li>• Windows 2003 Server x64 SP2</li> </ul>	



Component	Operating system	Pre-requisite software
	<ul style="list-style-type: none"><li>• Windows 8</li><li>• Windows 8 x64</li><li>• Windows 7</li><li>• Windows 7 x64</li><li>• Windows Vista</li><li>• Windows Vista x64</li><li>• Windows XP Professional</li><li>• Windows XP Professional x64</li></ul>	
Distribution Server	<ul style="list-style-type: none"><li>• Windows 2012 Server</li><li>• Windows 2008 R2 Server Core</li><li>• Windows 2008 R2 Server</li><li>• Windows 2008 Server Core</li><li>• Windows 2008 Server</li><li>• Windows 2008 Server Core x64</li><li>• Windows 2008 Server x64</li><li>• Windows 2003 R2 Server</li><li>• Windows 2003 R2 Server x64</li><li>• Windows 2003 Server SP2</li><li>• Windows 2003 Server x64 SP2</li><li>• Windows 8</li><li>• Windows 8 x64</li><li>• Windows 7</li><li>• Windows 7 x64</li><li>• Windows Vista</li><li>• Windows Vista x64</li><li>• Windows XP Professional</li><li>• Windows XP Professional x64</li></ul>	<ul style="list-style-type: none"><li>• .NET Framework 4.0</li><li>• Internet Explorer 7.0 to 10.0</li></ul>

<sup>2</sup> Requires IIS to run in 32 bit mode

<sup>3</sup> Please be aware of the fact that there are no intentions to provide ongoing support for later versions of Symantec Ghost.

# Compatibility

This section describes the compatibility of RayManageSoft 10.0 products. If installing any components of RayManageSoft on the same server, the version of that component must also be 10.0.

## Compatible components

Versions of distribution servers and managed devices that can be managed by Deployment Manager 10.0:

Component	Compatible versions
Deployment Manager for distribution servers	10.0
Deployment Manager for managed devices (Windows)	10.0
Deployment Manager for managed devices (Linux)	10.0
Deployment Manager for managed devices (Solaris)	10.0
Deployment Manager for managed devices (Mac OS X)	10.0
Deployment Manager for managed devices (AIX)	10.0
Deployment Manager for managed devices (HP-UX)	10.0

Versions of distribution servers and managed devices that can be managed by OS Deployment Manager 10.0 and Security & Patch Manager 10.0:

Component	Compatible versions
Deployment Manager for distribution servers	10.0
Deployment Manager for managed devices (Windows)	10.0

## Links

Visit [www.RayManageSoft.com](http://www.RayManageSoft.com) for further information on RayManageSoft, and take a look at the additional resources available at the Knowledge Base: <http://knowledgebase.raymanagesoft.com>.

Raynet is looking forward receiving your feedback on your RayManageSoft experience. Please contact your Raynet service partner or write an e-mail to: [support@raynet.de](mailto:support@raynet.de) to add your ideas or requirements to the RayManageSoft development roadmap!



# RayManageSoft is part of the RaySuite

More information online  
[www.raynet.de](http://www.raynet.de)

## Raynet GmbH

Technologiepark 20  
33100 Paderborn  
Germany

T +49 5251 54009-0  
F +49 5251 54009-29

General information: [info@raynet.de](mailto:info@raynet.de)  
Product support: [support@raynet.de](mailto:support@raynet.de)