

Release Notes RayPack 1.0 SP3



**Copyright © Raynet GmbH (Germany, Paderborn HRB 3524). All rights reserved.
Complete or partial reproduction, adaptation, or translation without prior written permission is prohibited.**

Release Notes RayPack

Raynet and RayFlow are trademarks or registered trademarks of Raynet GmbH protected by patents in European Union, USA and Australia, other patents pending. Other company names and product names are trademarks of their respective owners and are used to their credit.

The content of this document is furnished for informational use only, is subject to change without notice, and should not be construed as a commitment by Raynet GmbH. Raynet GmbH assumes no responsibility or liability for any errors or inaccuracies that may appear in this document. All names and data used in examples are fictitious unless otherwise noted.

Any type of software or data file can be packaged for software management using packaging tools from Raynet or those publicly purchasable in the market. The resulting package is referred to as a Raynet package. Copyright for any third party software and/or data described in a Raynet package remains the property of the relevant software vendor and/or developer. Raynet GmbH does not accept any liability arising from the distribution and/or use of third party software and/or data described in Raynet packages. Please refer to your Raynet license agreement for complete warranty and liability information.

Raynet GmbH Germany
See our website for locations.

www.raynet.de

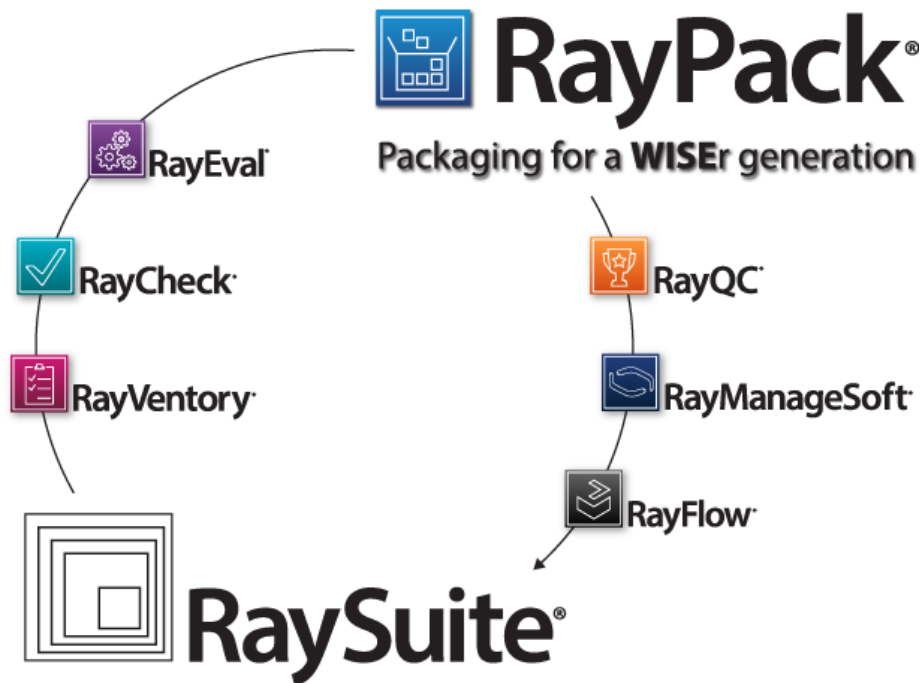


Table of Contents

Introduction	4
Development Roadmap	4
What's new?	5
PackDesigner	5
PackRecorder	8
RayPack Core	9
Previous changelogs	9
System Requirements	14
Hardware Requirements for Devices RunningRayPack	14
Supported OS for RayPack Framework Installations	15
Prerequisite Software	15
Known Issues	16
Additional Information	18

Introduction

RayPack is a framework for the creation and management of software packages. It is designed to support a broad variety of package formats, target operating systems and deployment systems. RayPack is available as stand-alone product as well as having the ability to be integrated into the RaySuite solution powered by RayFlow.



The RayPack components allow enterprises to implement well-structured processes, which control package evaluation, creation, manipulation, import, export, validation, storage, and deployment.

In the upcoming release of 1.0 SP3, Raynet introduces core components of the framework, which allow users to create MSI packages from scratch or build them based upon the result of installation capturing processes on Windows platforms. It is also possible to extend standard installations with transform files (MST), and edit their native contents, and to create App-V packages from packaging projects.

Development Roadmap

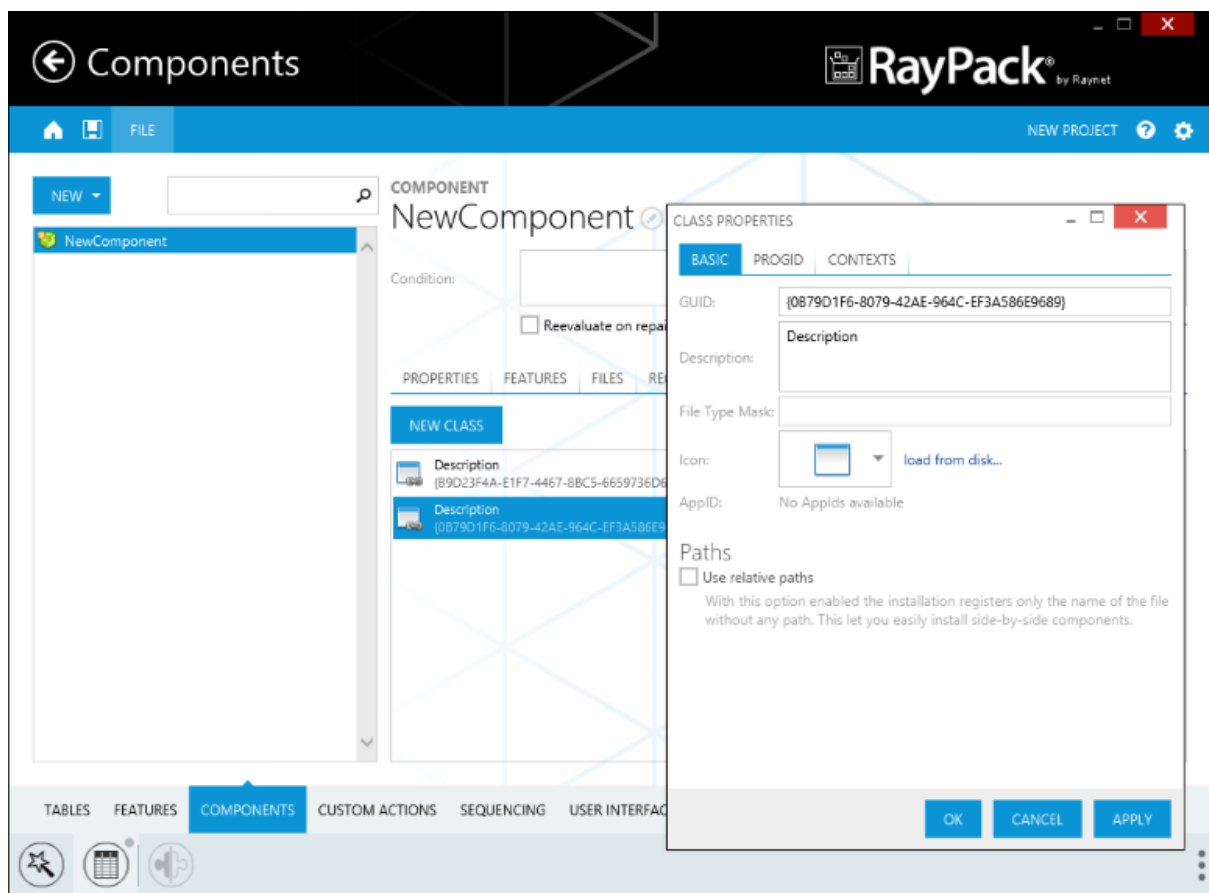
Upcoming releases will introduce additional components, such as the PackBench packaging workflow management tool, the PackLib package database, and the PackBot for automated application conversion. Please contact your sales representative to take a detailed look at the RayPack development roadmap.

What's new?

PackDesigner

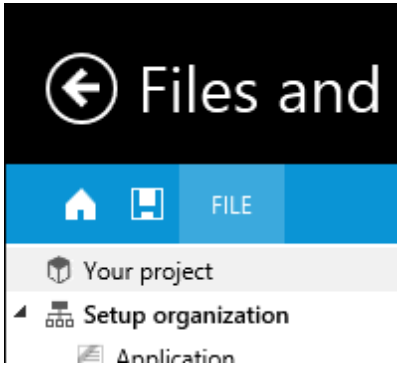
COM classes / ProgId editor

Beginning with RayPack 1.0 SP3, the PackDesigner supports COM classes / ProgId entries in the Visual Designer. The new class editor is available as a tab in the component view.



Quick save button

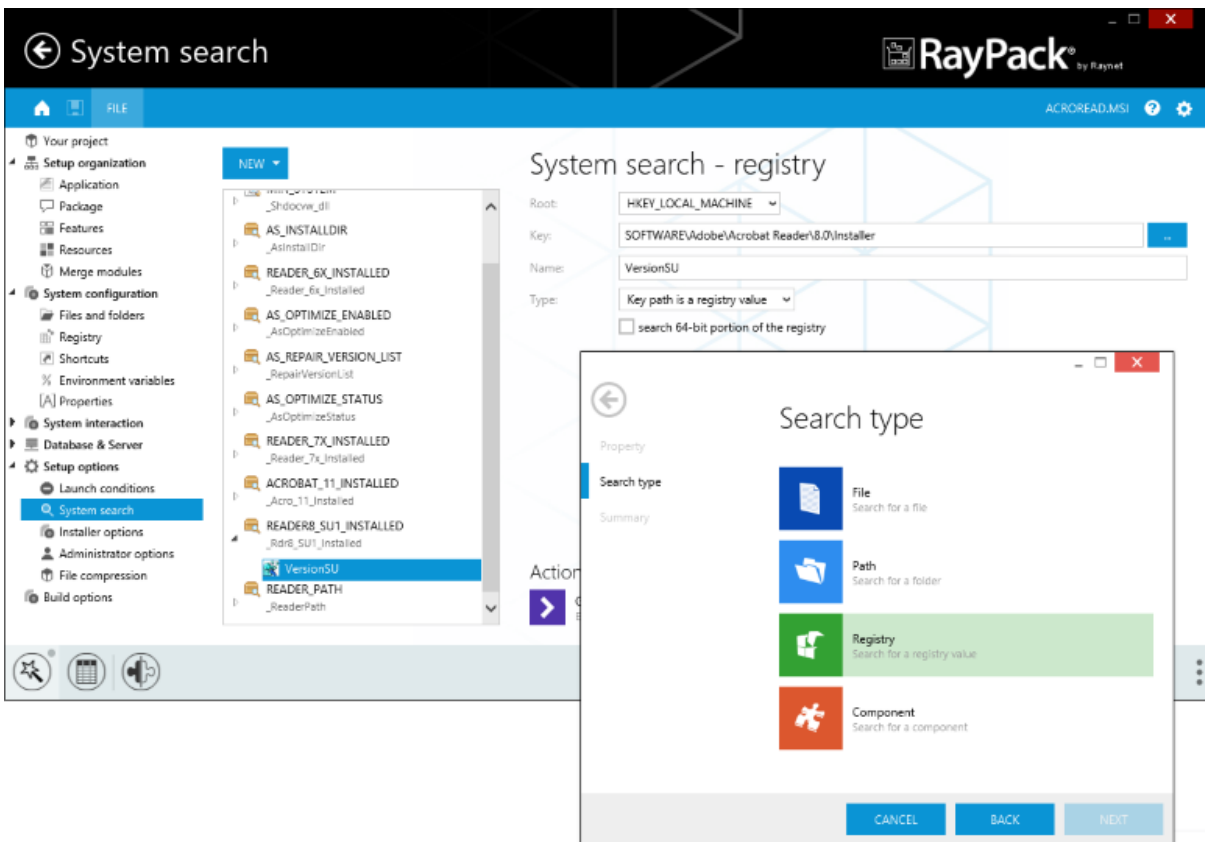
As requested by many RayPack users, we added a new quick save button in the main menu.



Additionally, we decided to enlarge and highlight the file menu to make it more prominent and easier to click.

System search

The SP3 version supports system searches out-of-the-box. The functionality will be expanded in next releases, for example with more predefined searches.

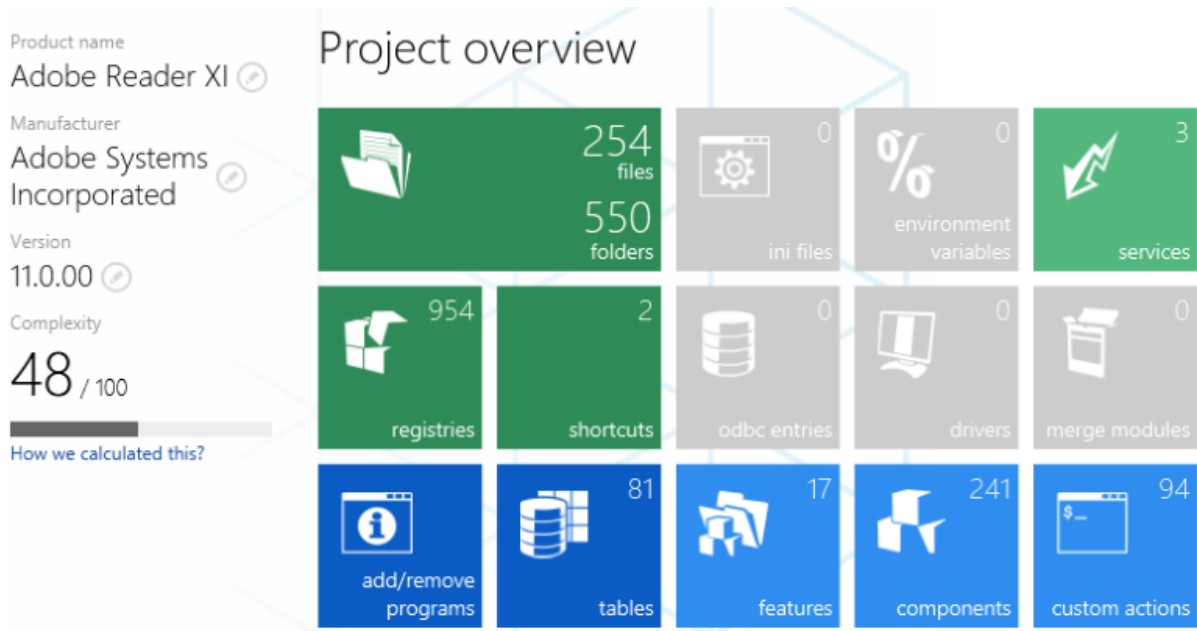


Improved the Your Project screen

The Your Project screen provides a convenient way of jumping to the Add/Remove programs information and

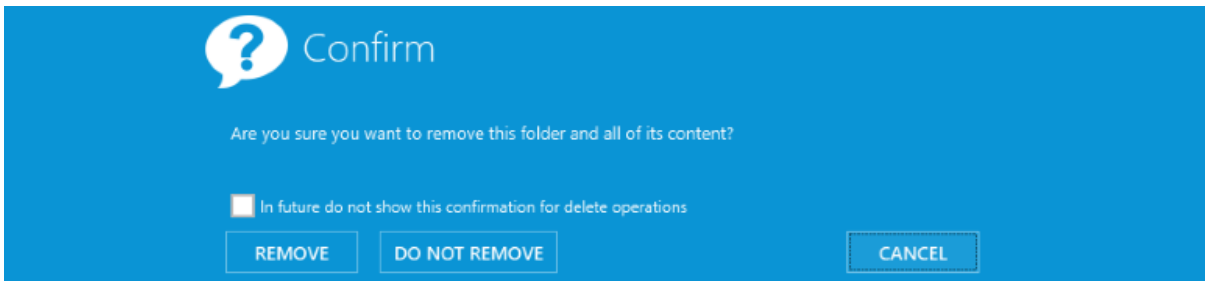
tables view. It can also display the number of folders in the currently edited package.

We also grouped similar functionality together and made the tiles view scale down correctly on low-resolution devices.



Confirmation on delete

The confirmation dialog has now a checkbox to skip future prompts:



This setting can be also configured in the user profile:



User interface

- Ask for confirmation before deleting**
When this option is selected, RayPack will require a confirmation before deleting an item (a file, registry etc.) in the VisualDesigner view.

PackRecorder

New exclusion lists

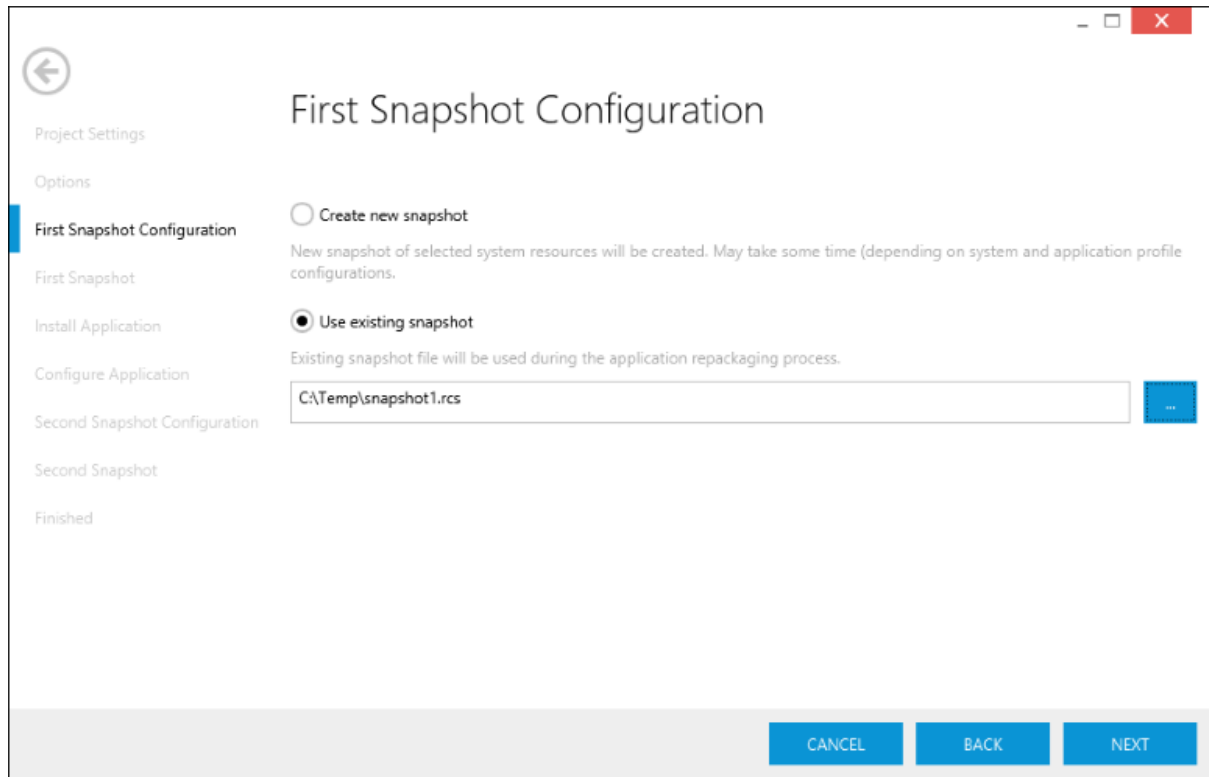
[NEW IN SP3] The new exclusion lists

All OS	Common filters for all Windows OS versions
Aggressive	An aggressive list of exclusions (produces cleaner output, but may require additional attention for complex packages)
Legacy and MSI Installer	A list of exclusions for standard repackaging

NOTE: If you are upgrading RayPack from older versions you may need to clear your user profile (%AppData%\RayPack) in order to see the new exclusions in the repackaging wizard.

Ability to save and reuse system snapshots

The improved repackaging wizard provides a convenient way of saving snapshots. The snapshots can be reused - instead of creating a new snapshot, one can load an already created snapshot. This works for both initial and final snapshot:



NOTE: In order to see these advanced options, the EXPERT repackaging mode has to be enabled in RayPack options.

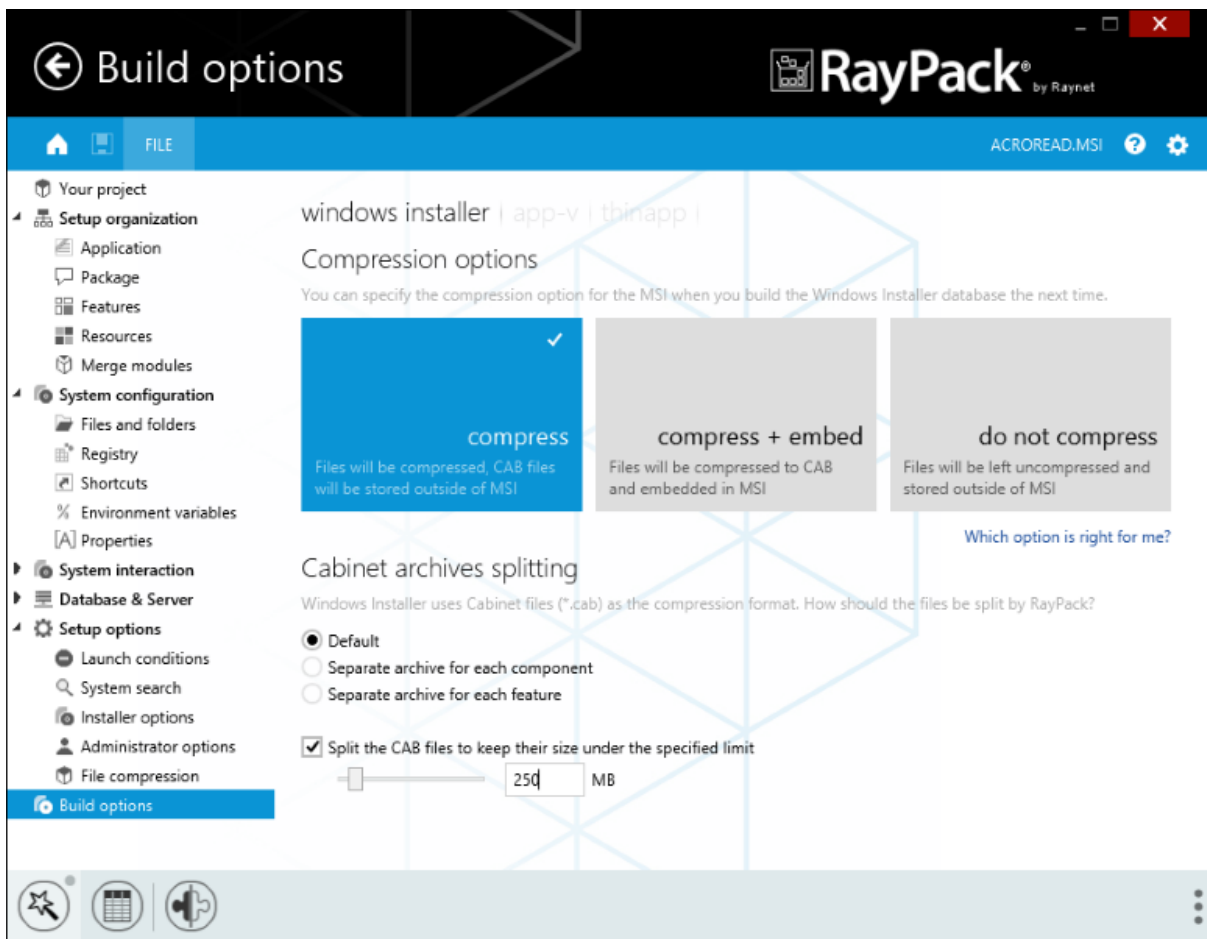
RayPack Core

- Many enhancements based on user feedback
- **[FIXED]** The size and position of all RayPack windows is now saved and restored between sessions.
- **[IMPROVED]** Improved features view
- **[IMPROVED]** Stability and performance optimizations
- **[NEW]** New activation wizard, providing a one-click import of existing license file.

Previous changelogs

Improved building process and advanced CAB management

[NEW IN SP2] This version brings a revamped way of managing and rebuilding files supported by RayPack. An exclusive CAB splitting functionality has been added:

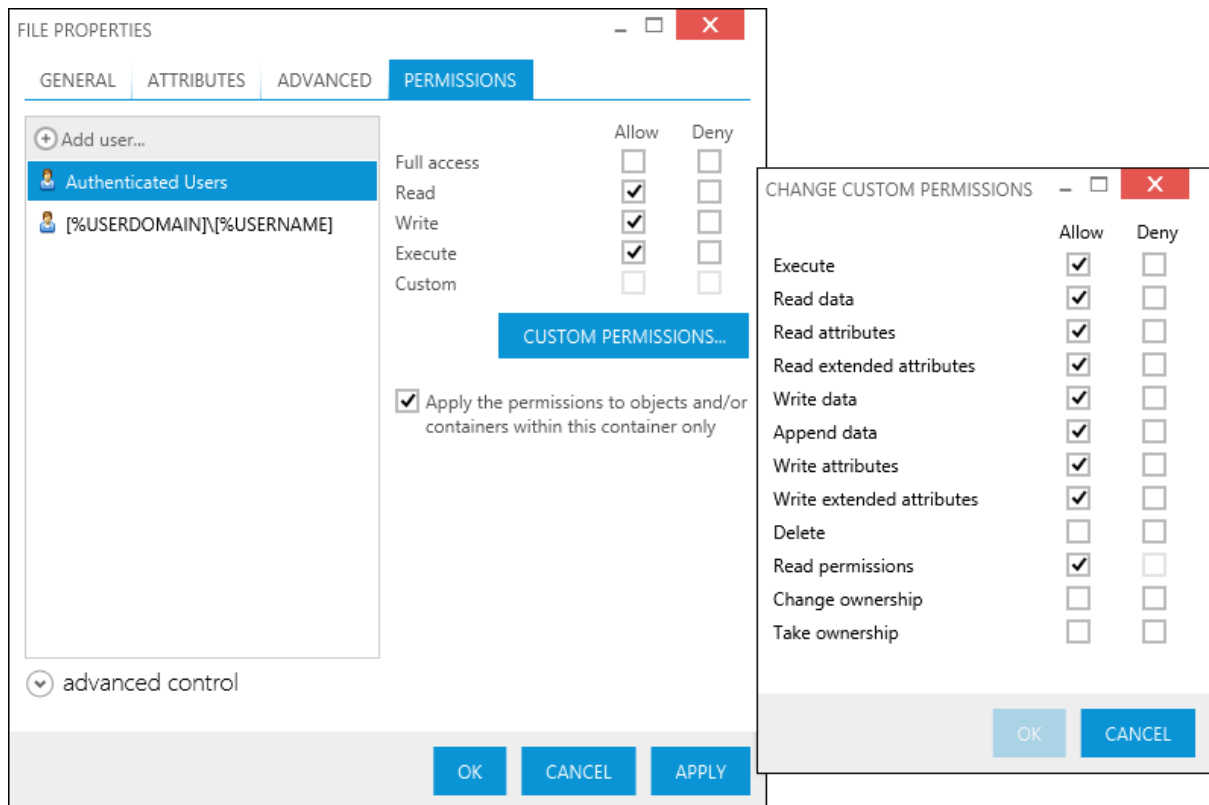


Additionally, there is a new option BUILD / EXPORT available from the main menu. The following table shows what format are available when working with different types of project:

Format	SAVE / SAVE AS	BUILD / EXPORT
RPP	<ul style="list-style-type: none"> RPP 	<ul style="list-style-type: none"> MSI (full rebuild according to the build settings) APPV
MSI	<ul style="list-style-type: none"> MSI (only new files are compiled) MST (only new files are compiled) 	<ul style="list-style-type: none"> MSI (full rebuild according to the build settings) RPP (conversion to RayPack format) APPV
MST	<ul style="list-style-type: none"> MSI (only new files are compiled) MST (only new files are compiled) 	<ul style="list-style-type: none"> MSI (full rebuild according to the build settings) RPP (conversion to RayPack format) APPV

Permissions management

[NEW IN SP1] RayPack supports a powerful mechanism of permissions management for a deployed file, folder or registry entry.



The mechanism supports SECEDIT like way of defining permissions plus formatted MSI properties and dynamic resolving of user/group names on run-time.

Auto-complete functionality for formatted strings

[NEW IN SP1] This exclusive feature displays the suggestions and offers auto completion as-you-type the values like target of shortcut, value of registry and other, marked by square brackets:

Registry value

Type:

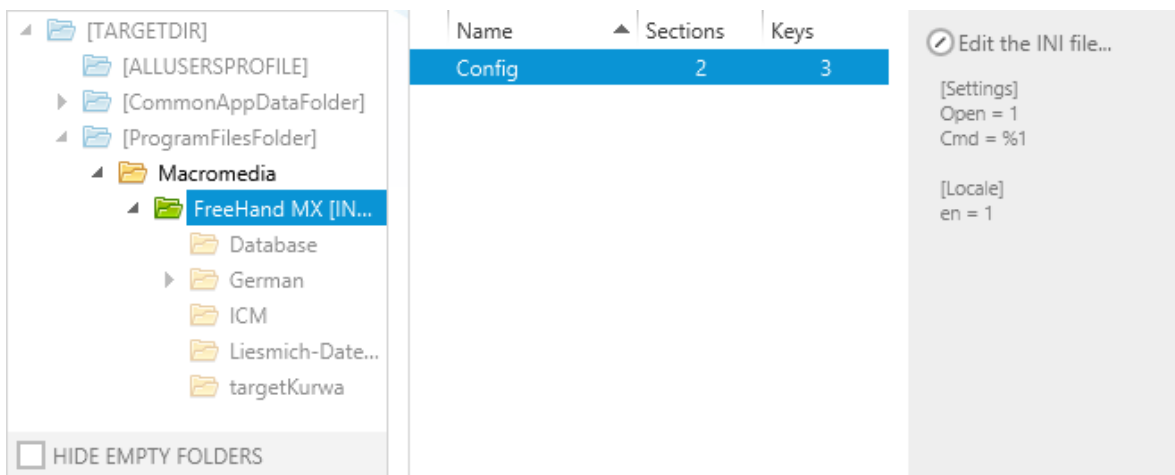
Value:

[Product]	[A] <property "Product">
[ProductCode]	[A] {78786EFA-D411-445F-9...
[ProductID]	[A] none
[ProductLanguage]	[A] 1033
[ProductName]	[A] FreeHand MX
[ProductState]	[A] <undefined>
[ProductVersion]	[A] 11

It supports not only properties from the Property table, but also recognizes the standard MSI properties, paths to files, folders, environment variables etc. And as additional value-added, it displays the preview of resolved syntax next to each item.

Improved user interface

[NEW IN SP2] Some areas have been improved based on user feedback, for example the new INI file browser:



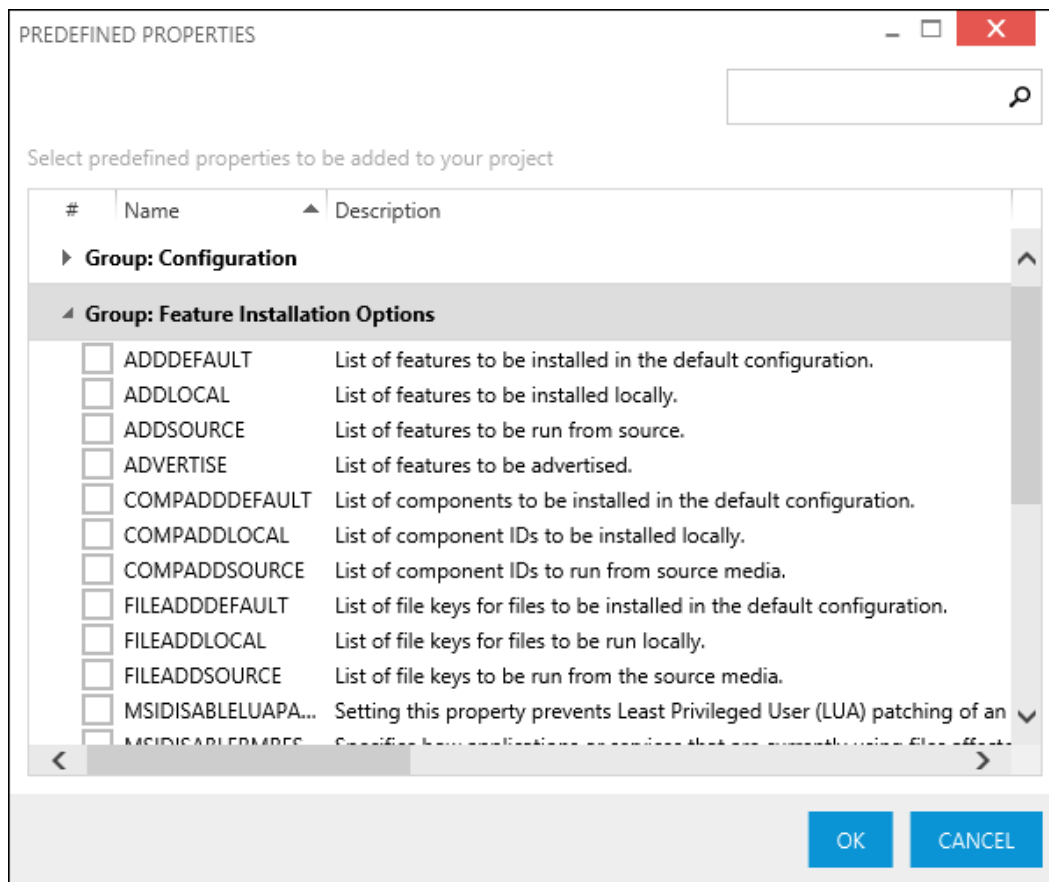
Additionally:

- New wizards has been added to simplify tasks like text replacements management, SQL scripts/databases operations etc.

- Multi-selection for features/components view has been added (allowing a bulk operations on them)
- New interactive cells in tables view (dropdowns for predefined set of values or referenced values etc.)

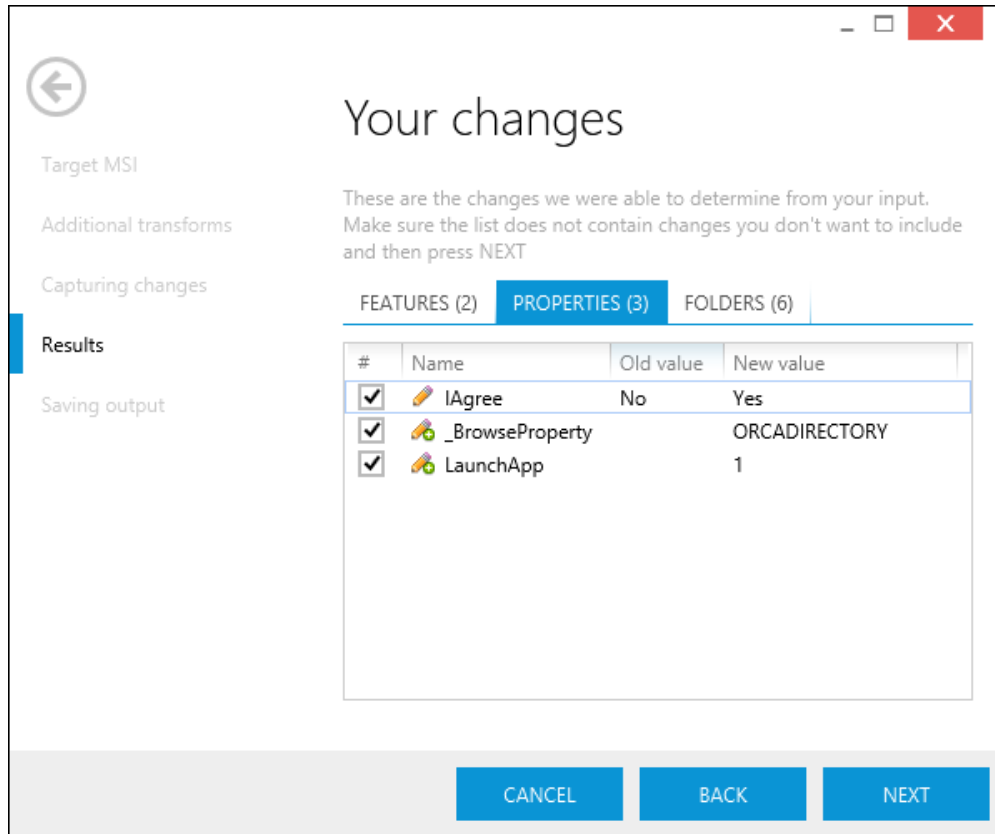
The property manager

[NEW IN SP1] The new property manager provides an easy way to manage the properties in your package and to insert predefined MSI properties, without referring to the documentation or memorizing the name and purpose of each one. For convenience, a search functionality is also provided.



PackTailor

[NEW IN SP1] PackTailor is a new module for producing response transforms created from user input and interaction with MSI dialogs,



Other enhancements & new features

- **[NEW IN SP2]** Ability to import and export Windows *.REG files in the registry view
- **[NEW IN SP1]** Support for MSI features: creation of folder (via CreateFolder table), removal of folder (via RemoveFile table) etc.
- **[IMPROVED IN SP2]** The text replacements mechanism can be now used to easily append the content
- **[IMPROVED IN SP2]** Improved support for Administrative Image
- **[FIXED IN SP2]** Fixed a rare issues causing the profile changes not to be persisted

System Requirements

Hardware Requirements for Devices Running RayPack

This section lists the minimal hardware requirements for running RayPack.

Minimal

- Screen resolution: 1024 x 768 pixels
- Color settings: 16 bit
- RAM: 2GB
- Disk space: 10GB

Recommended

- Screen resolution: 1280 x 1024 pixels
- Color settings: 32 bit
- RAM: 4GB or higher
- Disk space: 100GB or more



Note:

The installation of the RayPack framework itself requires about 100MB of disk space. The amount of additional space needed depends on the volume of your packaging material and the location of the data store.

Supported OS for RayPack Framework Installations

The following operating systems are supported for the installation and running of RayPack.

- Windows 8.1
- Windows 8.1 x64
- Windows 8
- Windows 8 x64
- Windows 7
- Windows 7 x64
- Windows Vista
- Windows Vista x64
- Windows XP Professional SP3
- Windows XP Professional SP3 x64
- Windows 2012 R2 Server
- Windows 2012 Server
- Windows 2008 R2 Server
- Windows 2008 Server SP1-SP2
- Windows 2008 Server x64 SP1-SP2
- Windows 2003 R2 Server
- Windows 2003 R2 Server x64
- Windows 2003 Server SP2
- Windows 2003 Server x64 SP2

**Note:**

Packages generated with RayPack have their own, individual set of target OS. The list above is not designed to display which target OS are reachable by RayPack packages.

Prerequisite Software

- .NET 4.0 Client & Full for Windows XP up to Windows 7 systems (both 32bit and 64bit)

As a packaging best practice, it is recommended to install available .NET versions onto the base instead of including it within a package.

Known Issues

Since RayPack is introduced as a brand new product, there are some features which are implemented at a basic level, but need fine-tuning and polishing to fully meet Raynet's high quality standards. The following list of Known Issues is provided to inform about upcoming addons:

RayPack Core

App-V

- The App-V / SFT Editor interface for direct package manipulation is under construction
- Generating App-V v4 is not available at present

PackDesigner

The PackDesigner interface already contains preview sections regarding upcoming functionality. The following views are not implemented within RayPack 1.0 SP3:

- Merge Modules
- IIS
- User interface

Additionally, there are some inactive buttons included to indicate upcoming features.

Files & Folders

- Advanced drag, drop, and clipboard operations will be added
- The performance of imports including large amounts of files or folders will be improved

Registry

- Advanced drag, drop, and clipboard operations will be added
- Moving keys or values from one component to another is not available yet
- The performance of imports including large amounts of registry objects will be improved

Setup Options

- Launch Conditions: Predefined launch conditions and advanced condition management are missing
- Installer Options: The status of the elevation option is not reflected within the MSI database

Table Editor

- Advanced database management features, such as creating custom tables, editing the schema of existing tables, or dropping tables are not implemented yet

Additional Information

Visit www.raypack.net for further information regarding the product and current community incentives. It's also recommended taking a look at additional resources available at the Knowledge Base for Raynet products: <http://knowledgebase.raypack.net>

Raynet is looking forward to receiving your feedback from your RayPack experience. Please contact your Raynet service partner or write an e-mail to beta@raypack.net to add your ideas or requirements to the RayPack development roadmap!

Our Raynet support team gladly assists you on any question or issue you encounter regarding RayPack. Feel free to sign in and open incidents via our Raynet support panel, or by simply sending an email to support@raynet.de if you are an already registered Raynet customer.

RayPack is part of the RaySuite

More information online
www.raynet.de

Raynet GmbH

Technologiepark 20
33100 Paderborn
Germany

T +49 5251 54009-0
F +49 5251 54009-29

General information: info@raynet.de
Product support: support@raynet.de