

Release Notes RayPack 1.1



**Copyright © Raynet GmbH (Germany, Paderborn HRB 3524). All rights reserved.
Complete or partial reproduction, adaptation, or translation without prior written permission is prohibited.**

Release Notes RayPack

Raynet and RayFlow are trademarks or registered trademarks of Raynet GmbH protected by patents in European Union, USA and Australia, other patents pending. Other company names and product names are trademarks of their respective owners and are used to their credit.

The content of this document is furnished for informational use only, is subject to change without notice, and should not be construed as a commitment by Raynet GmbH. Raynet GmbH assumes no responsibility or liability for any errors or inaccuracies that may appear in this document. All names and data used in examples are fictitious unless otherwise noted.

Any type of software or data file can be packaged for software management using packaging tools from Raynet or those publicly purchasable in the market. The resulting package is referred to as a Raynet package. Copyright for any third party software and/or data described in a Raynet package remains the property of the relevant software vendor and/or developer. Raynet GmbH does not accept any liability arising from the distribution and/or use of third party software and/or data described in Raynet packages. Please refer to your Raynet license agreement for complete warranty and liability information.

Raynet GmbH Germany
See our website for locations.

www.raynet.de

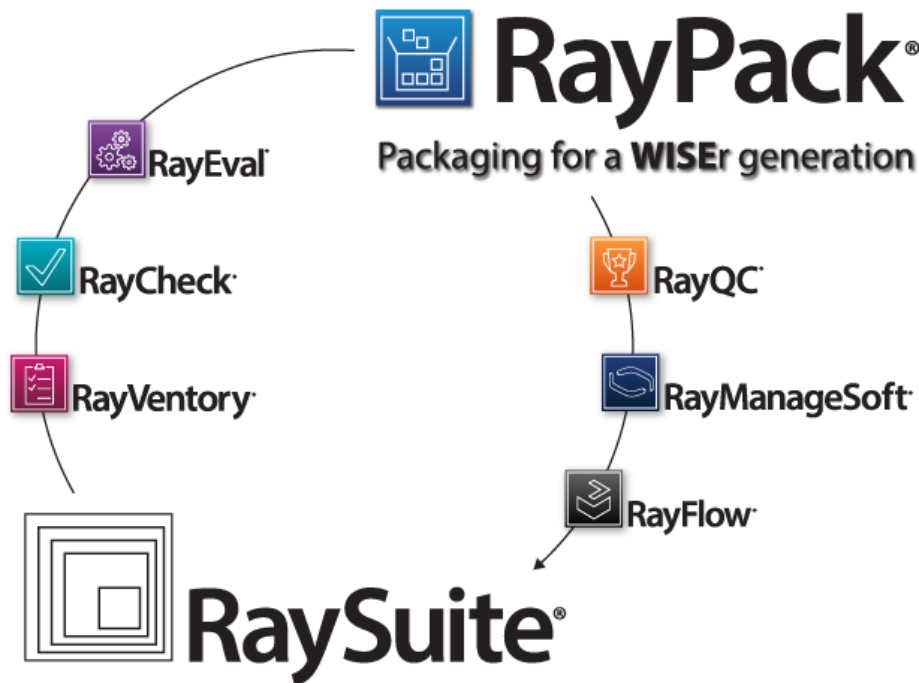


Table of Contents

Introduction	4
Development Roadmap	4
What's new?	5
PackDesigner	5
PackRecorder	14
PackTailor	16
Migration	18
System Requirements	19
Hardware Requirements for Devices RunningRayPack	19
Supported OS for RayPack Framework Installations	20
Prerequisite Software	20
Additional Information	21

Introduction

RayPack 1.1 is a next iteration of framework for the creation and management of software packages. It is designed to support a broad variety of package formats, target operating systems and deployment systems. RayPack is available as stand-alone product as well as having the ability to be integrated into the RaySuite solution powered by RayFlow.



The RayPack components allow enterprises to implement well-structured processes, which control package evaluation, creation, manipulation, import, export, validation, storage, and deployment.

In the upcoming release 1.1, Raynet introduces core components of the framework, which allow users to create MSI packages from scratch or build them based upon the result of installation capturing processes on Windows platforms. It is also possible to extend standard installations with transform files (MST), and edit their native contents, and to create App-V packages from packaging projects.

Development Roadmap

Upcoming releases will introduce additional new components and features, resulting in boosted productivity, time and resource saving and improving the product experience. The development of RayPack is customer-oriented - should you have any ideas or suggestions of how you see your ideal packaging tool simply let us know and see the product growing according to your business needs. Our sales team will be happy to help you, also make sure to check our website <http://raynet.de> to never miss our next releases, announcements,, special offers and product trainings.

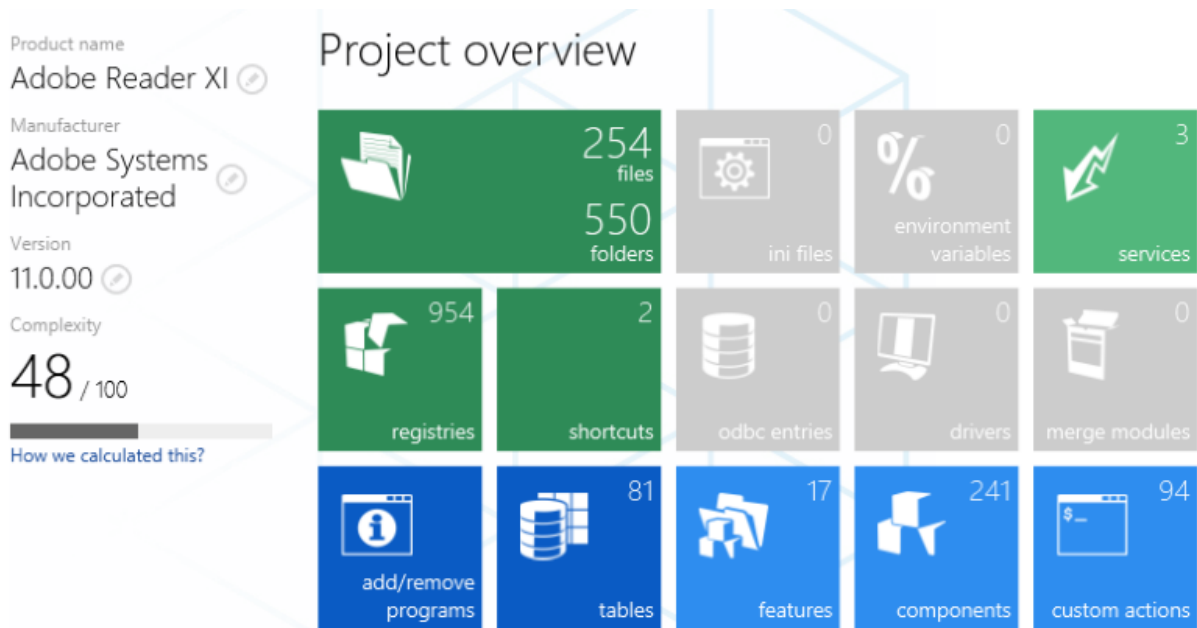
What's new?

PackDesigner

Improved project overview

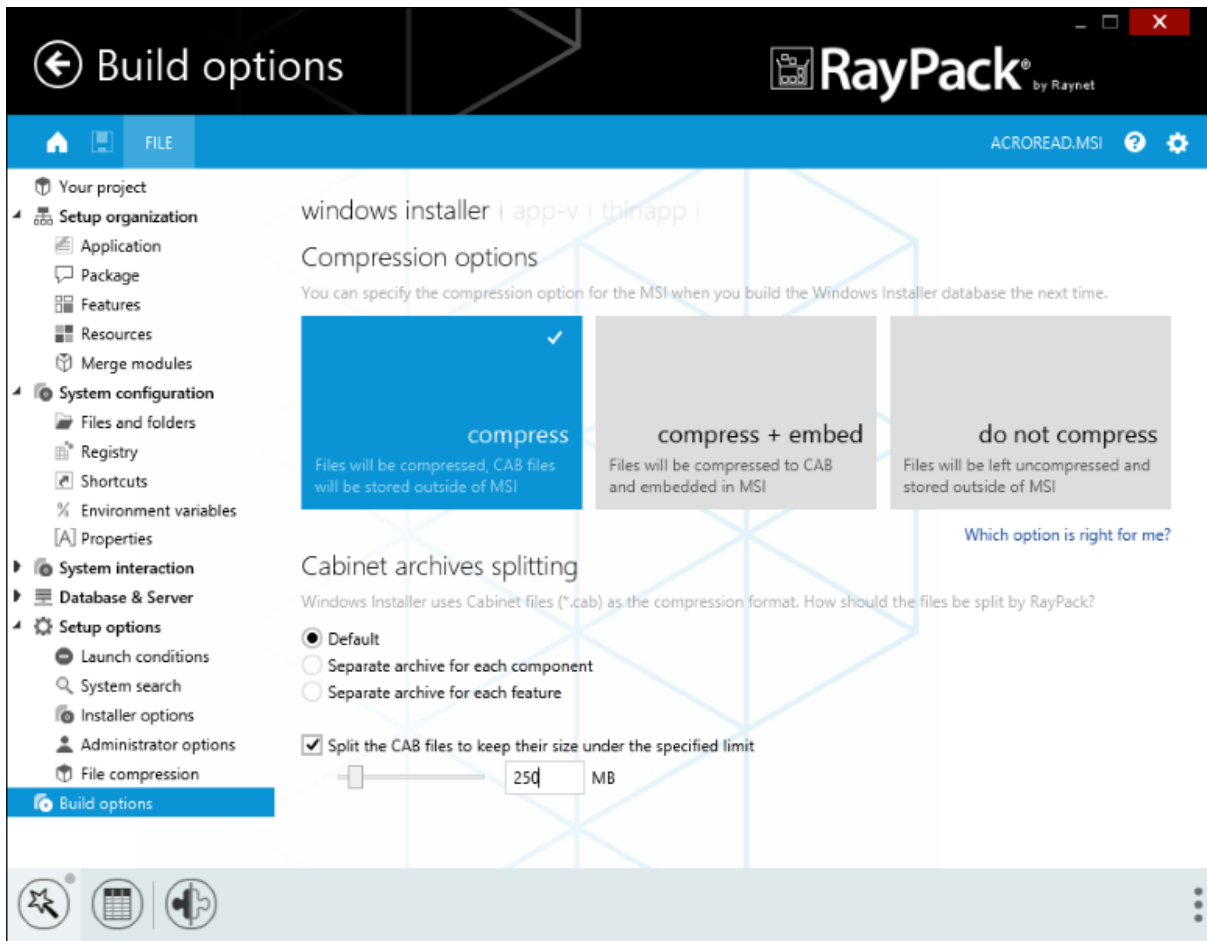
The improved Your Project screen provides a convenient way of jumping to the Add/Remove programs information and tables view. It can also display the number of folders in the currently edited package.

We also grouped similar functionality together and made the tiles view scale down correctly on low-resolution devices.



Redefined building process and advanced CAB management

The version 1.1 brings a revamped way of managing and rebuilding project files supported by RayPack. Also, the exclusive CAB splitting functionality has been added:

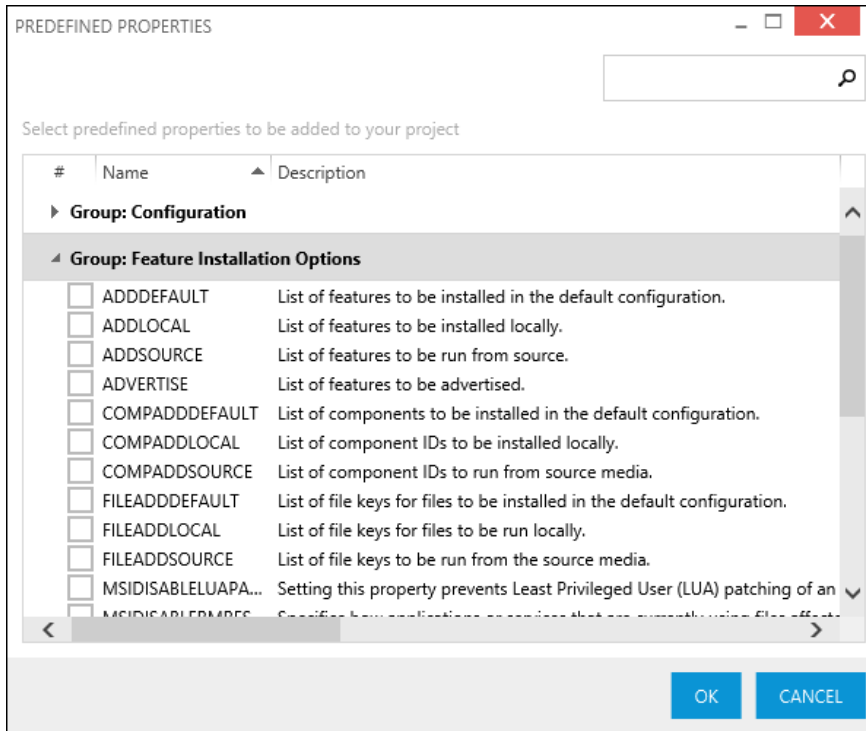


Additionally, there is a new option BUILD / EXPORT available from the main menu. The following table shows which formats are available when working with different types of projects:

Format	SAVE / SAVE AS	BUILD / EXPORT
RPP	<ul style="list-style-type: none"> RPP (quick save - no compilation) 	<ul style="list-style-type: none"> MSI (full rebuild according to the build settings) APPV
MSI	<ul style="list-style-type: none"> MSI (quick compile - only new files are compiled) MST (quick compile - only new files are compiled) 	<ul style="list-style-type: none"> MSI (full rebuild according to the build settings) RPP (conversion to RayPack format) APPV
MST	<ul style="list-style-type: none"> MSI (quick compile - only new files are compiled) MST (quick compile - only new files are compiled) 	<ul style="list-style-type: none"> MSI (full rebuild according to the build settings) RPP (conversion to RayPack format) APPV

The property manager

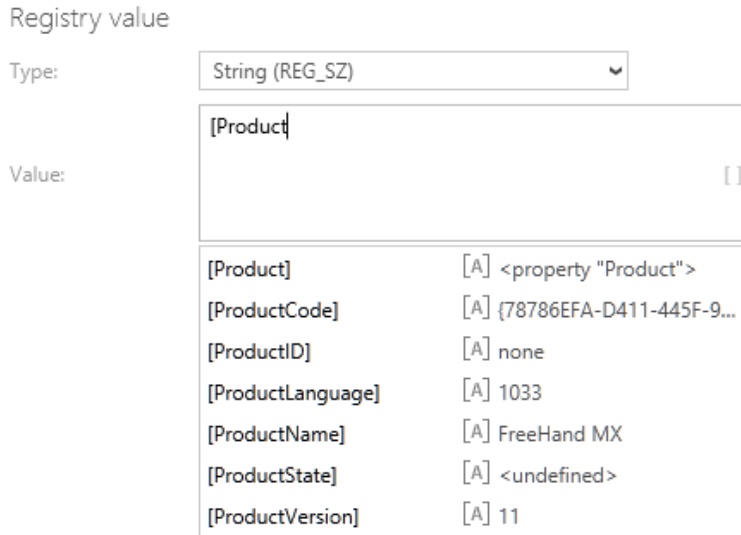
We implemented a new property manager in version 1.1. It provides an easy way to manage the properties in your package and to insert predefined MSI properties, without referring to the documentation or memorizing the name and purpose of each one. For convenience, a search functionality is also provided.



The list is highly configurable via simple XML editing.

Auto-complete functionality for formatted strings

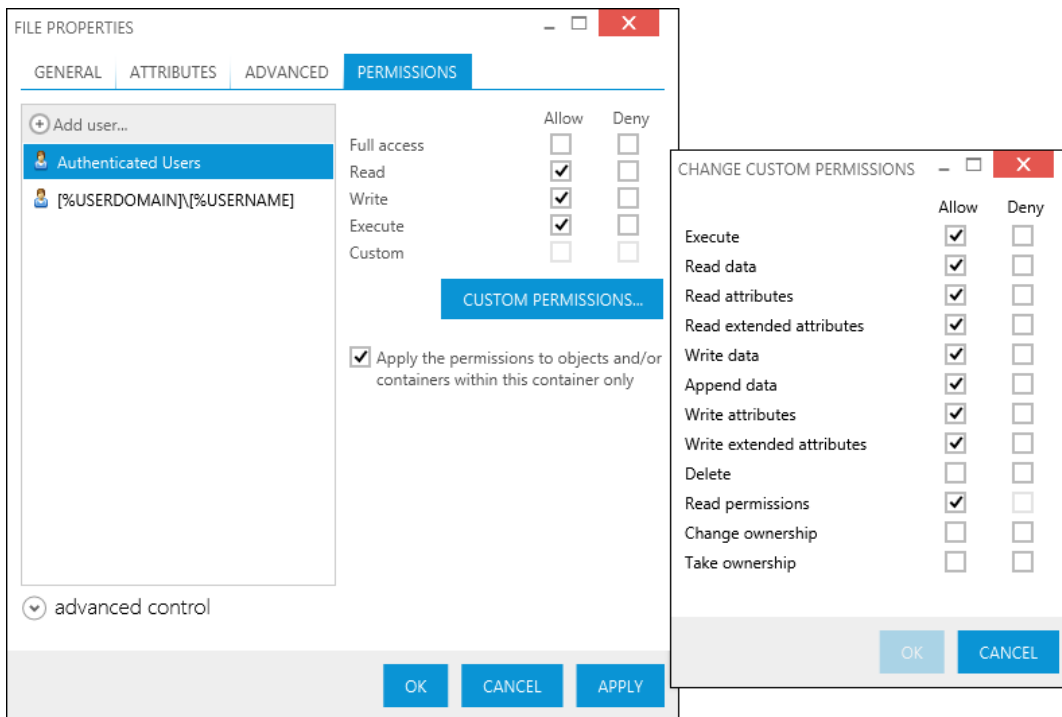
This exclusive feature available in version 1.1 makes it easy to write valid MSI formatted string syntax. Simply start typing in field marked by square brackets, and RayPack will offer auto completion and list of suggestions.



Both keyboard and mouse navigation is supported. The list of suggestions shows not only properties from the Property table, but also recognizes the standard MSI properties (even if they are missing in your project) with their default values, paths to files, folders, environment variables etc. And as additional value-added, it displays the preview of resolved syntax next to each item.

Permissions management

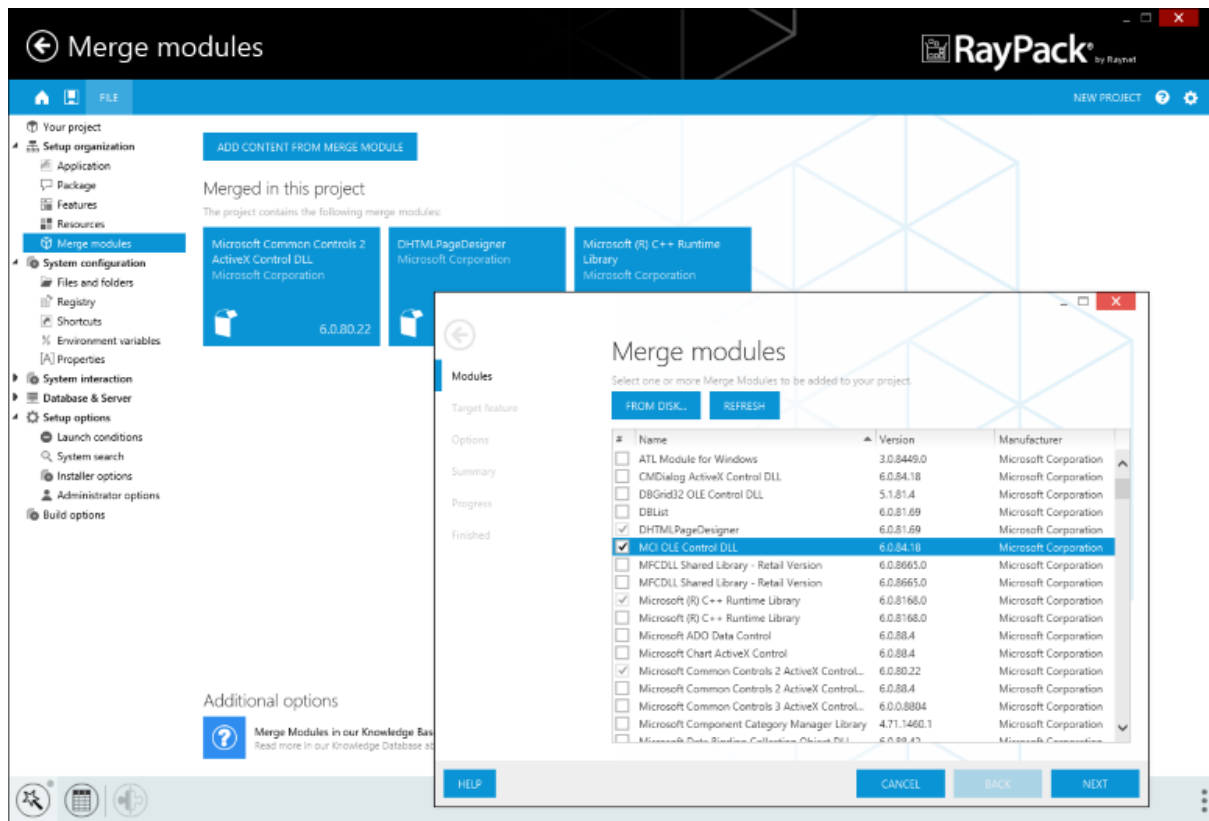
RayPack supports a powerful mechanism of permissions management for a deployed file, folder or registry entry.



The mechanism supports SECEDIT-inspired way of defining permissions plus formatted MSI properties and dynamic resolving of user/group names on run-time.

Merge Modules support

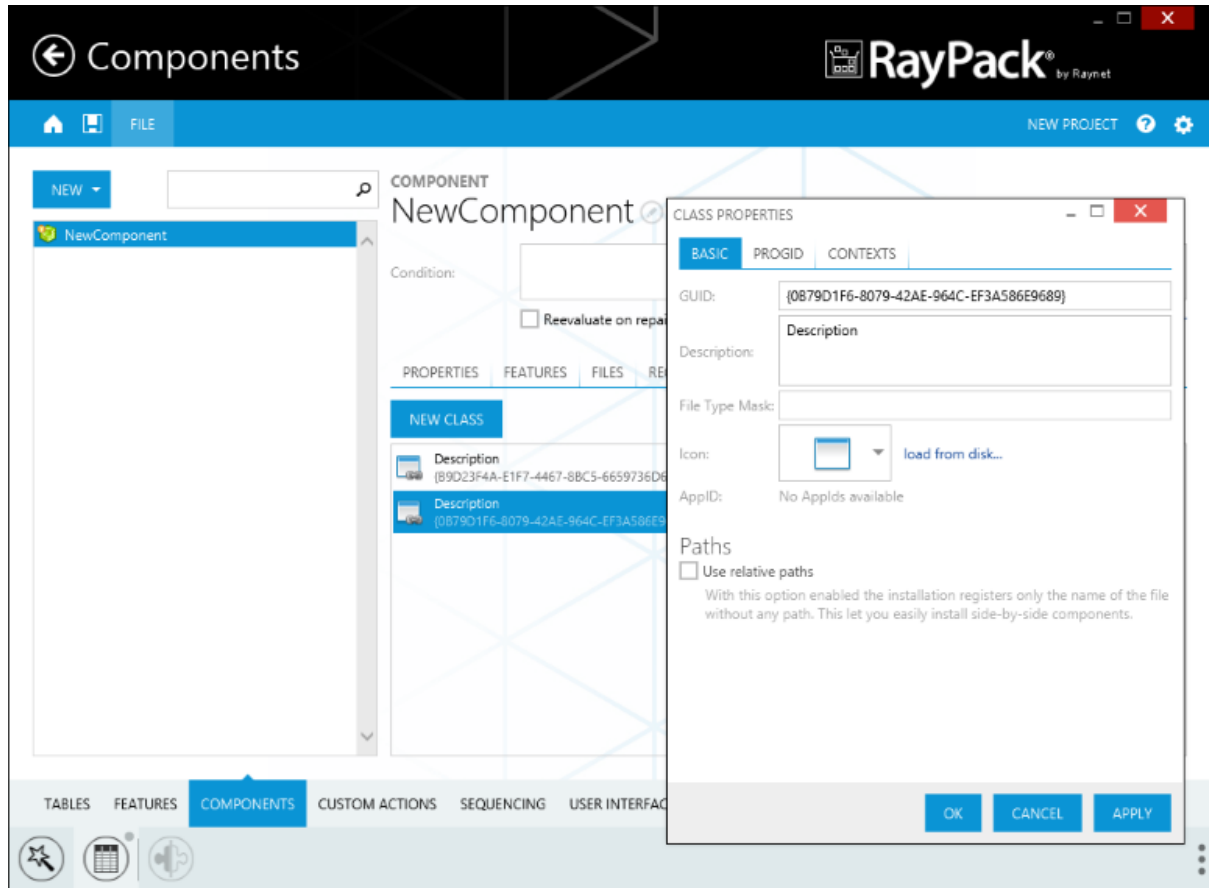
RayPack 1.1 supports viewing and adding merge modules. Merge modules provide a standard method by which developers deliver shared Windows Installer components and setup logic to their applications. Many popular merge modules come preinstalled with RayPack. The library can be simply customized (via XML configuration), adding a merge module outside of library is also possible.



When working on RPP project, RayPack offers a choice whether selected merge modules should be included immediately (standard behavior) or merged at build time, assuring that the content is always up-to-date.

COM classes / ProgId editor

RayPack 1.1 comes with out-of-the-box support for COM classes and ProgId entries in the Visual Designer. The new class editor is available as a tab in the component view.

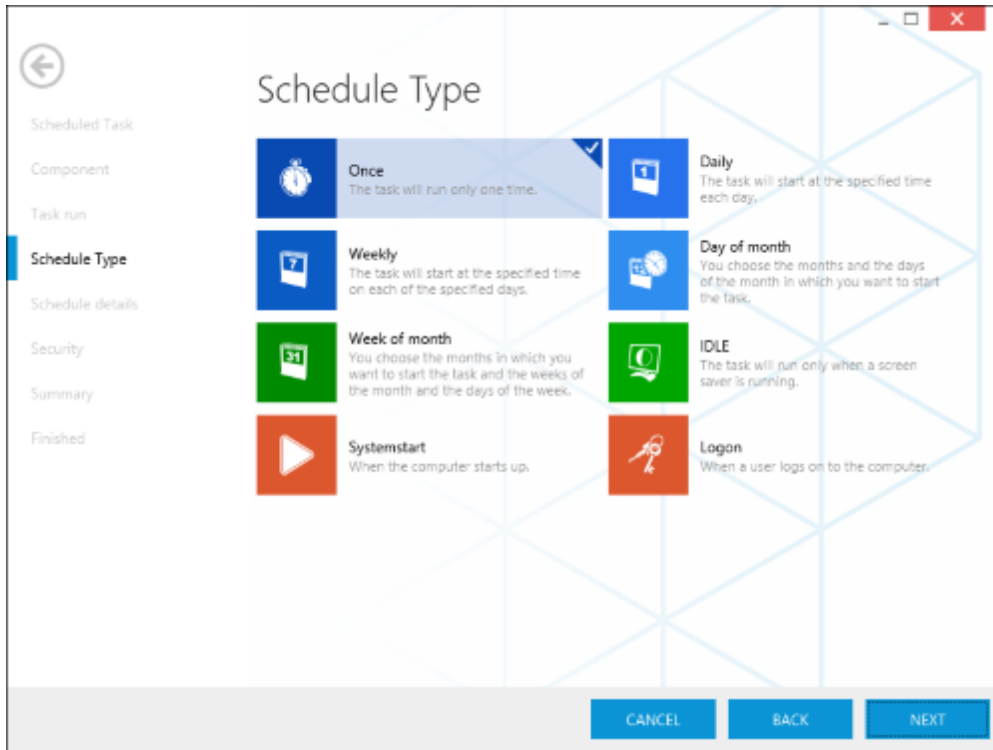


Standard Windows Installer advertised tables (Class, ProgId) are supported.

New database and server features

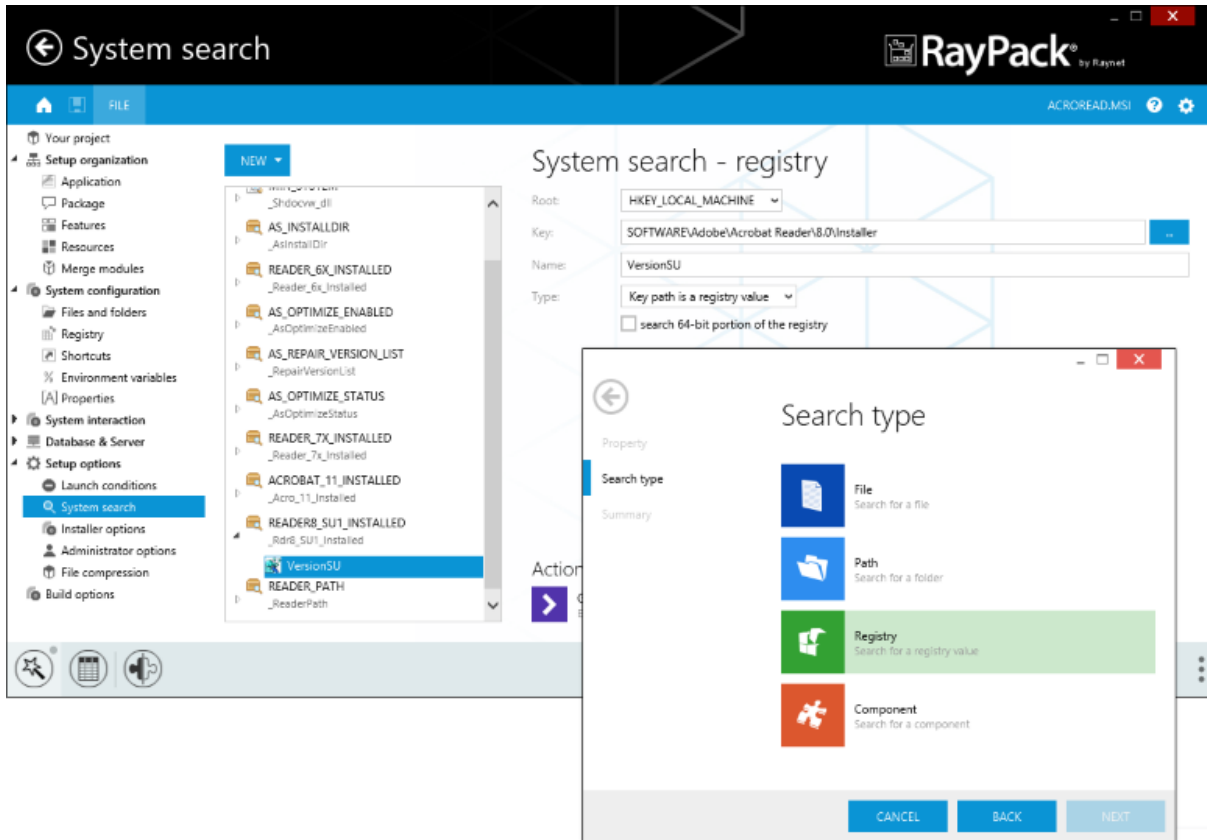
Version 1.1 offers a simple to use and feature-rich control over various database- and server-related features:

- Adding a website, configuring a pool or web service extension is just right a few clicks away with the new IIS snap-in.
- The SQL databases and custom SQL scripts can be created and deployed easily with the new SQL Databases and SQL Scripts snap-ins.
- A powerful configuration of task scheduler is available within the new Scheduled tasks snap-in. It supports virtually all combinations supported by Windows, including scheduling on a given date, day of the week, month, logon, idle and many more.



System search

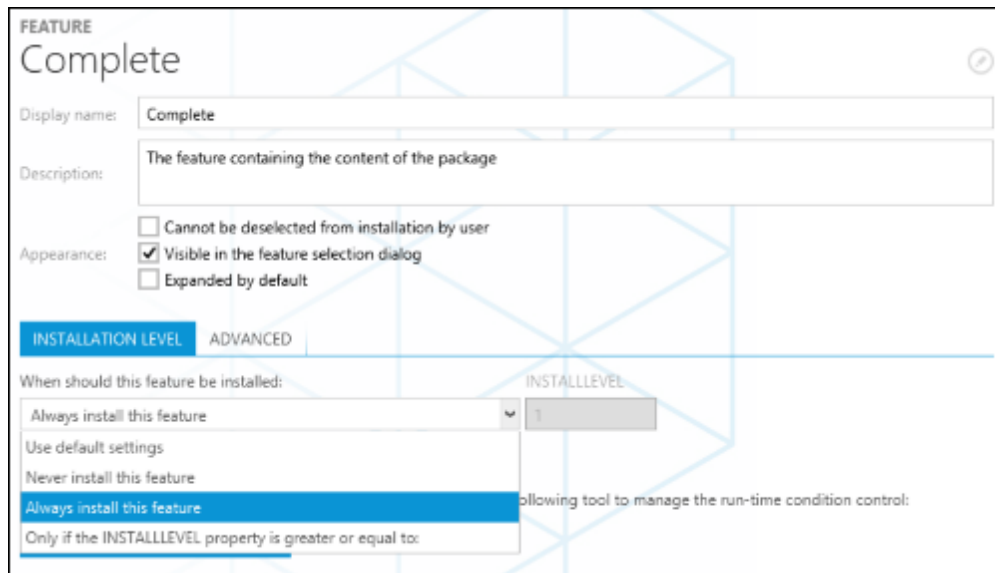
A powerful system search mechanism provides a convenient way of finding required files, folders, registry values, INI values on installation run time.



As an additional value, RayPack comes with a handy set of predefined searches, to make this process just as simple as a few clicks in the System Search wizard.

Improved features view

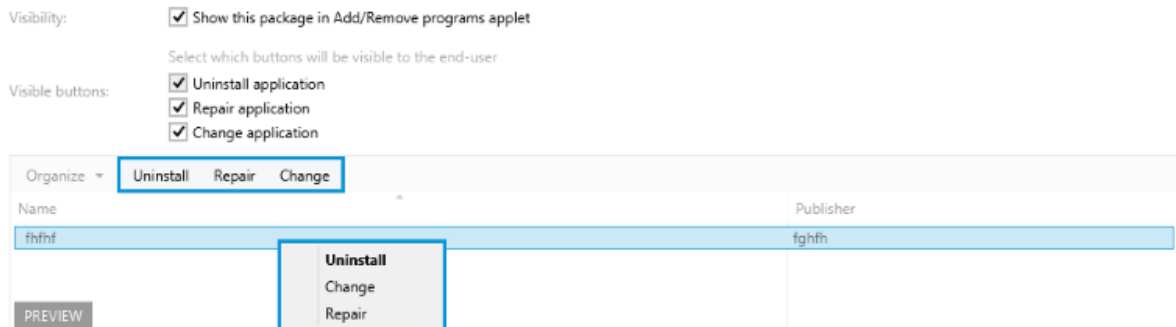
The features view has been redesigned, allowing easy handling of install conditions.



Improved Add/Remove Programs view

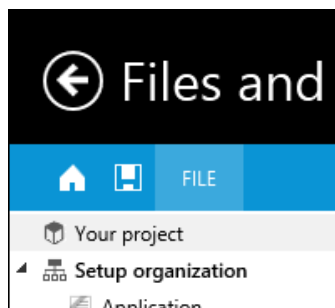
The new design of Application view provides easy and transparent editor of Add/Remove Programs applet properties.

Add/remove programs



Streamlined main toolbar

A highly demanded shortcut to save the current project has been added next to the file menu.



Additionally, we decided to enlarge and highlight the file menu to make it more prominent and easier to click.

More new or enhanced features

In comparison to version 1.0, RayPack 1.1 offers even faster, robust and feature-packed packaging experience. We added many new wizards, dialogs and included several improvements suggested by our users. Some notable places worth to check:

- The new streamlined INI files view,
- Improved overall performance
- Tables view show drop-down pop-ups for cells supporting static range of values,
- Ability to clear the visual indication of changes (the colored background of rows, cells and tables) indicating added rows, changed values,
- Ability to control the style of setting installation directory (a default behavior that resolves folder at parent or a classic behavior that sets the identifiers directly)
- Expanded configuration, including suggested naming conventions
- Ability to import and export registry to and from *.reg file
- Support for the folder operations from the folder properties dialog (visual editing of entries saved in the CreateFolder and RemoveFile tables)
- The confirmation dialog before deleting items can be now disabled by clicking a checkbox or in the PackDesigner options
- The MSI templates for new RPP and new RCP projects were merged into a single one

PackRecorder

New exclusion lists

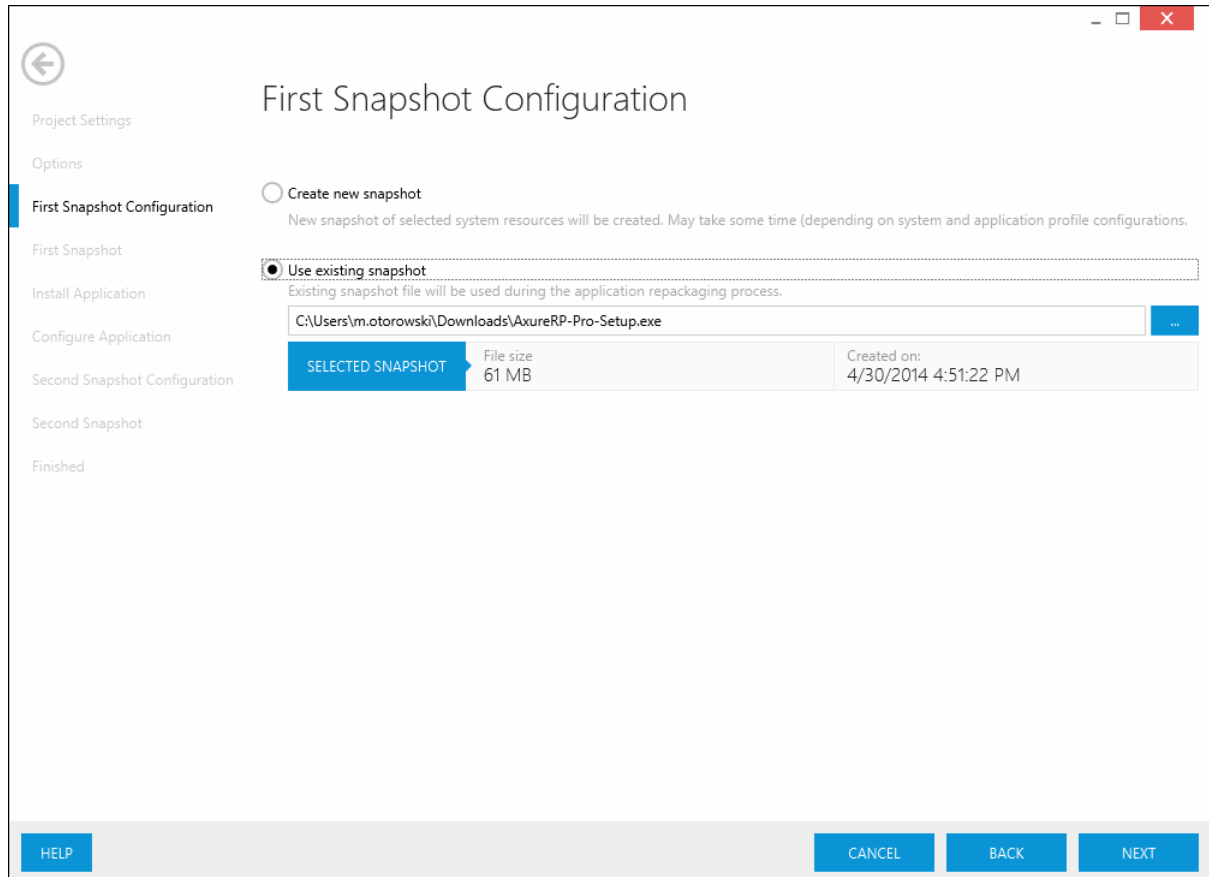
The 1.1 release has a predefined set of configurable exclusion lists

All OS	Common filters for all Windows OS versions
Aggressive	An aggressive list of exclusions (produces cleaner output, but may require additional attention for complex packages)
Legacy and MSI Installer	A list of exclusions for standard repackaging

NOTE: If you are upgrading RayPack from older versions you may need to clear your user profile (%AppData%\RayPack) in order to see the new exclusions in the repackaging wizard.

Ability to save and reuse system snapshots

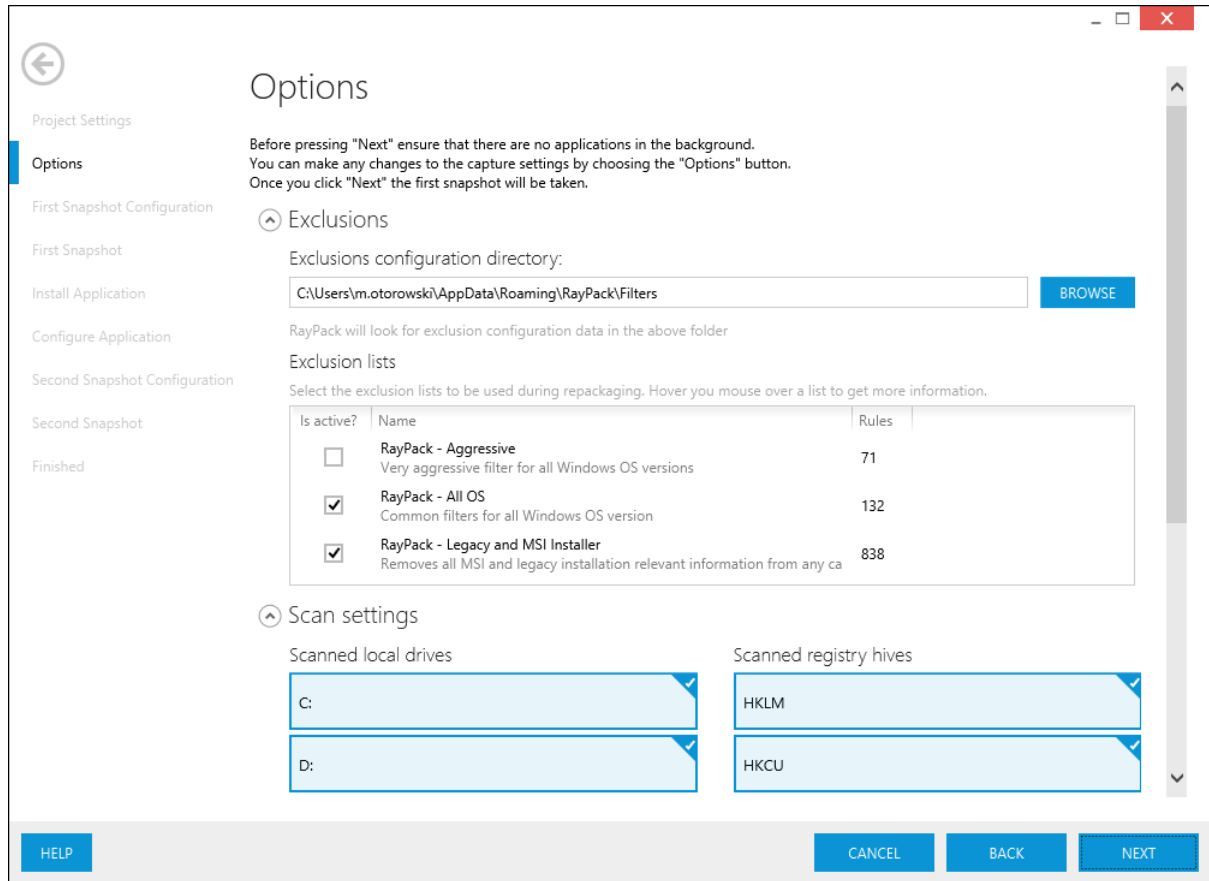
The improved repackaging wizard provides a convenient way of saving snapshots. The snapshots can be reused - instead of creating a new snapshot, one can load an already created snapshot. This works for both initial and final snapshot:



NOTE: In order to see these advanced options, the EXPERT repackaging mode has to be enabled in RayPack options.

New exclusions selector

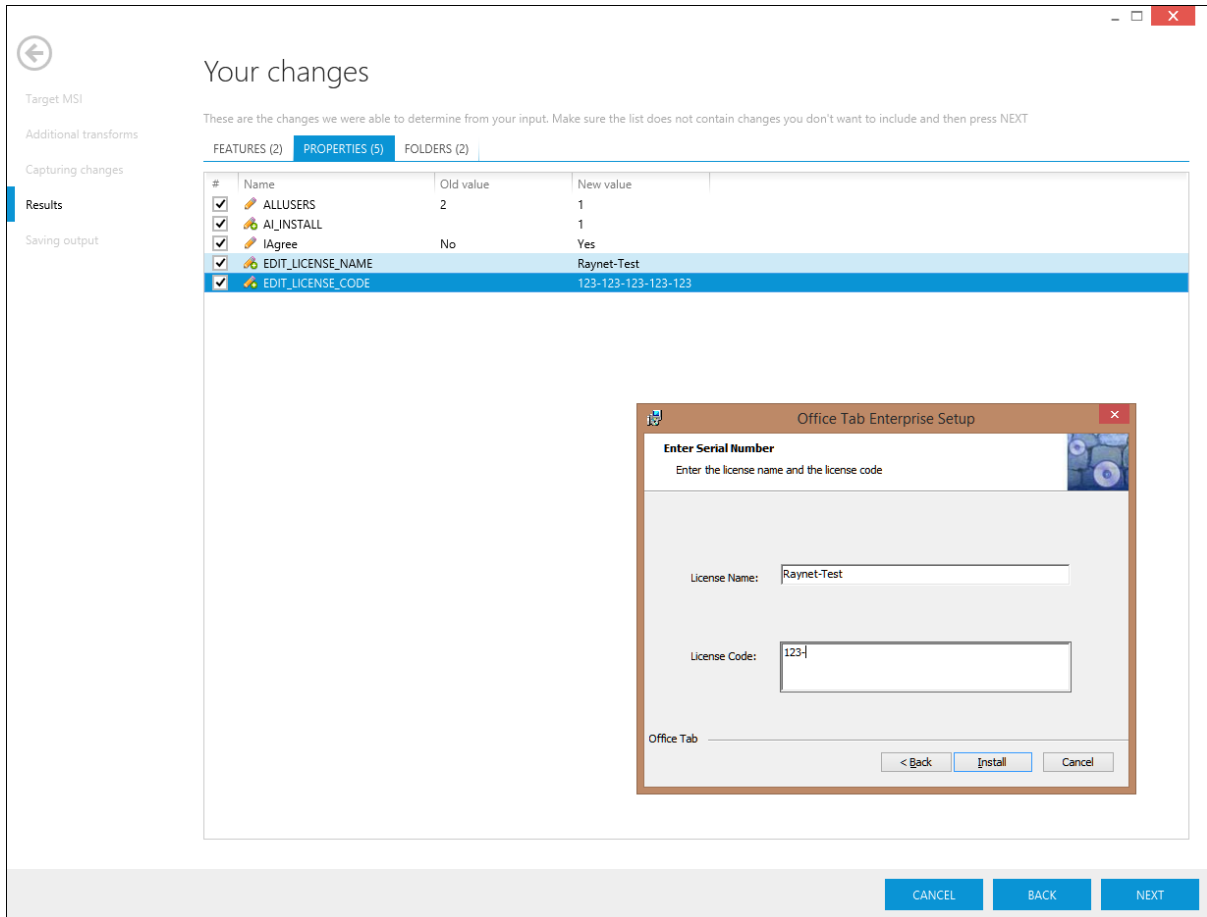
The improved exclusion selector shows the basic information at the first glance



Many other PackRecorder settings pages have been also reworked.

PackTailor

PackTailor is a new module for producing response transforms created from user input and interaction with MSI dialogs,



←

Your changes

Target MSI

Additional transforms

Capturing changes

Results

Saving output

These are the changes we were able to determine from your input. Make sure the list does not contain changes you don't want to include and then press NEXT

FEATURES (2) **PROPERTIES (5)** FOLDERS (2)

#	Name	Old value	New value
<input checked="" type="checkbox"/>	ALLUSERS	2	1
<input checked="" type="checkbox"/>	AI_INSTALL	1	1
<input checked="" type="checkbox"/>	IAgree	No	Yes
<input checked="" type="checkbox"/>	EDIT_LICENSE_NAME		Raynet-Test
<input checked="" type="checkbox"/>	EDIT_LICENSE_CODE		123-123-123-123

Office Tab Enterprise Setup

Enter Serial Number

Enter the license name and the license code

License Name:

License Code:

Office Tab

< Back Install Cancel

CANCEL BACK NEXT

Migration

When migrating from an older version of RayPack, the following topics have to be taken into consideration:

License

The licensing system in RayPack 1.1 is far more flexible, allowing tailoring your license to actual business needs. Therefore, all licenses generated for version 1.0 have to be reactivated again.

Please make sure that you delete all *.license files from the installation folder (default C:\Program Files (x86)\RayPack) and then simply start RayPack or contact our support in order to get a new license.

Of course all order numbers generated for the version 1.0 are still valid and were automatically converted to the new edition.

Profiles

In release 1.1 we improved the settings and packaging environment by merging the templates for the new MSI (RPP) and repackaged projects (RCP). For the best experience it is recommended to clear the old profiles folder on the machine the upgrade will be performed. The old profiles are located in %AppData%\RayPack folder.

If you already had a highly customized profile, please contact our support, we will be happy to assist you on migration.

System Requirements

Hardware Requirements for Devices Running RayPack

This section lists the minimal hardware requirements for running RayPack.

Minimal

- Screen resolution: 1024 x 768 pixels
- Color settings: 16 bit
- RAM: 2GB
- Disk space: 10GB

Recommended

- Screen resolution: 1280 x 1024 pixels
- Color settings: 32 bit
- RAM: 4GB or higher
- Disk space: 100GB or more

**Note:**

The installation of the RayPack framework itself requires about 100MB of disk space. The amount of additional space needed depends on the volume of your packaging material and the location of the data store.

Supported OS for RayPack Framework Installations

The following operating systems are supported for the installation and running of RayPack.

- Windows 8.1
- Windows 8.1 x64
- Windows 8
- Windows 8 x64
- Windows 7
- Windows 7 x64
- Windows Vista
- Windows Vista x64
- Windows XP Professional SP3
- Windows XP Professional SP3 x64
- Windows 2012 R2 Server
- Windows 2012 Server
- Windows 2008 R2 Server
- Windows 2008 Server SP1-SP2
- Windows 2008 Server x64 SP1-SP2
- Windows 2003 R2 Server
- Windows 2003 R2 Server x64
- Windows 2003 Server SP2
- Windows 2003 Server x64 SP2

**Note:**

Packages generated with RayPack have their own, individual set of target OS. The list above is not designed to display which target OS are reachable by RayPack packages.

Prerequisite Software

- .NET 4.0 Client & Full for Windows XP up to Windows 7 systems (both 32bit and 64bit)
- Visual C++ Runtime 10.0 Redistributable (32- or 64- bit, depending on the target platform).

As a packaging best practice, it is recommended to install available .NET versions onto the base instead of including it within a package.

The VC++ redistributables are automatically deployed to the local installation folder during installation of RayPack, eliminating a need of manual installation.

Additional Information

Visit www.raypack.net for further information regarding the product and current community incentives. It's also recommended taking a look at additional resources available at the Knowledge Base for Raynet products: <http://knowledgebase.raypack.net>

Raynet is looking forward to receiving your feedback from your RayPack experience. Please contact your Raynet service partner or write an e-mail to beta@raypack.net to add your ideas or requirements to the RayPack development roadmap!

Our Raynet support team gladly assists you on any question or issue you encounter regarding RayPack. Feel free to sign in and open incidents via our Raynet support panel, or by simply sending an email to support@raynet.de if you are an already registered Raynet customer.

RayPack is part of the RaySuite

More information online
www.raynet.de

Raynet GmbH

Technologiepark 20
33100 Paderborn
Germany

T +49 5251 54009-0
F +49 5251 54009-29

General information: info@raynet.de
Product support: support@raynet.de