

RayQC 2.1 SP1 Release Notes



02.10.2015

RayQC 2.1 SP1 Release Notes



**Copyright © Raynet GmbH (Germany, Paderborn HRB 3524). All rights reserved.
Complete or partial reproduction, adaptation, or translation without prior written permission is prohibited.**

RayQC 2.1 SP1 Release Notes

Raynet and RayFlow are trademarks or registered trademarks of Raynet GmbH protected by patents in European Union, USA and Australia, other patents pending. Other company names and product names are trademarks of their respective owners and are used to their credit.

The content of this document is furnished for informational use only, is subject to change without notice, and should not be construed as a commitment by Raynet GmbH. Raynet GmbH assumes no responsibility or liability for any errors or inaccuracies that may appear in this document. All names and data used in examples are fictitious unless otherwise noted.

Any type of software or data file can be packaged for software management using packaging tools from Raynet or those publicly purchasable in the market. The resulting package is referred to as a Raynet package. Copyright for any third party software and/or data described in a Raynet package remains the property of the relevant software vendor and/or developer. Raynet GmbH does not accept any liability arising from the distribution and/or use of third party software and/or data described in Raynet packages. Please refer to your Raynet license agreement for complete warranty and liability information.

Raynet GmbH Germany
See our website for locations.

www.raynet.de

Table of Contents

Introduction	4
New Features	5
Resolved Issues	9
Known Issues	10
System Requirements	11
Additional Information	12
Need Help?	13

Introduction

RayQC is a rule-based tool used to create and execute test criteria using one or more checklists. It offers various modules to check the quality of applications and software packages all along the Application Lifecycle Management process.

Executing quality checks is possible using manual and / or automated procedures, which may utilize an extendable plug-in interface to integrate individually scripted check routines, tailored exactly towards specific mission scenario needs

RayQC Advanced is an extension module of Raynet's quality control tool i.e. RayQC. This extension is meant to provide packagers with the ability to execute automatic collision and conformity tests on software packages, merge modules, legacy setups, and OS snapshots. Additionally, a package can also be verified for virtualization against standard visualization technologies.

With this solution a user can execute tests on a package or a set of packages, which can either be located on a disk or maintained in the built-in package catalog library. Backed by a SQL Server database, this library maintains imported packages and their historical test results.

The release of RayQC 2.1 SP1 presents the user with the ability to execute conformity tests on web applications as well. Furthermore, with RayUpdater, a new tool to help migrate the RayQC database after the release of a new version has been added. Now, RayQC has the ability to integrate an MSI editor.

New Features

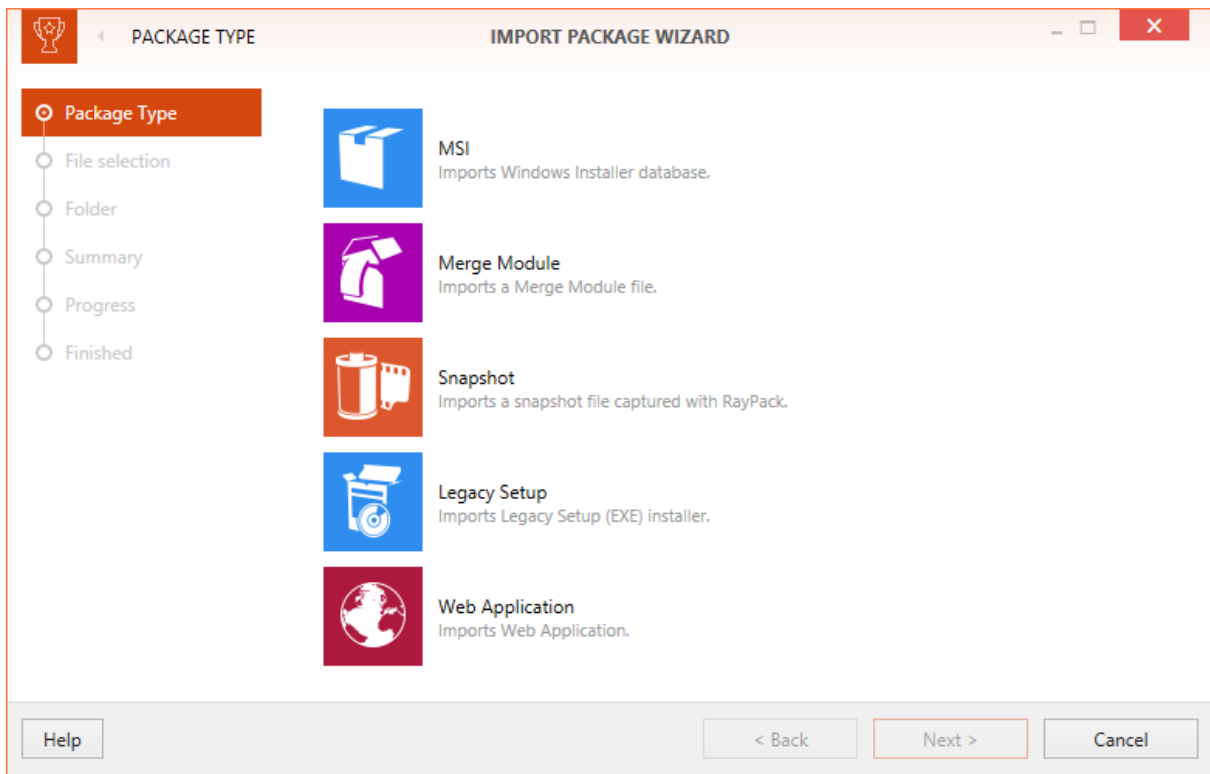
This chapter of the document summarizes the new features and functions offered by RayQC 2.1 SP1.

Conformity Tests for Web Applications

With the current release of the RayQC 2.1 SP1 the ability to perform conformity tests on different browsers has been added.

Import Wizard for Web Applications

The Import Wizard now supports the import of web applications into the library.

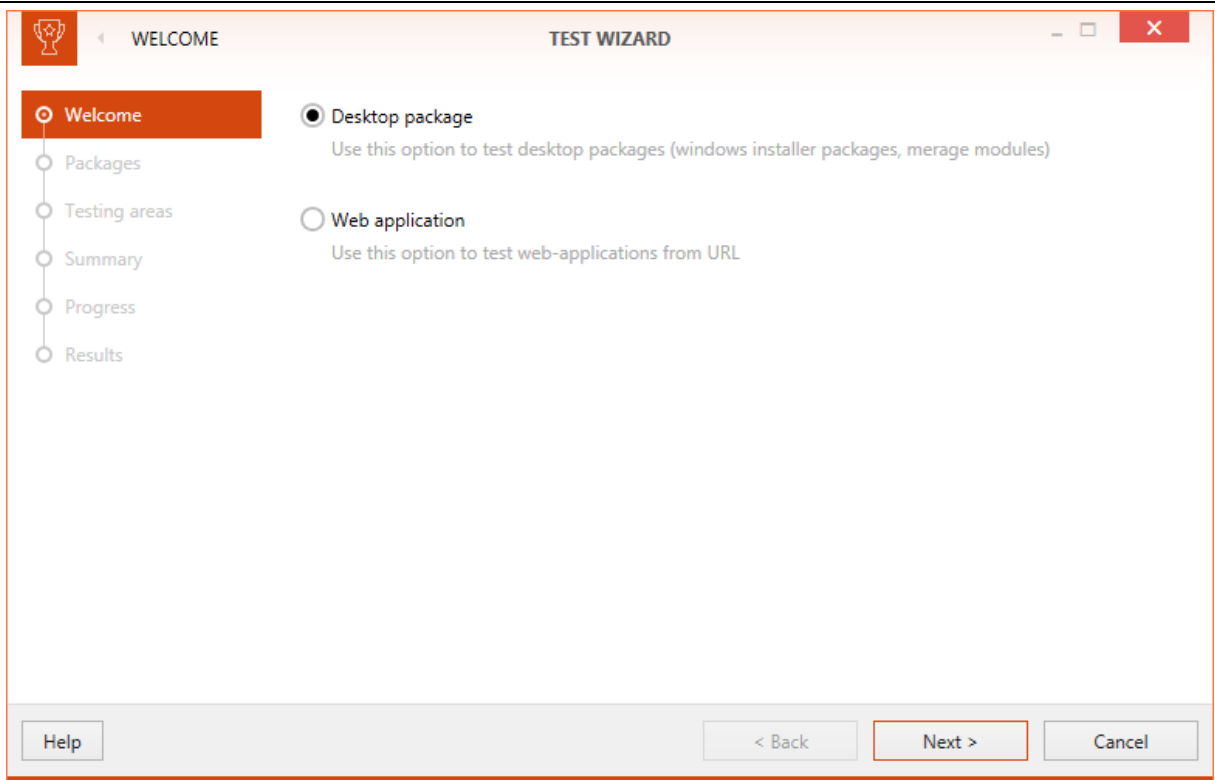


Test Wizard for Web Applications

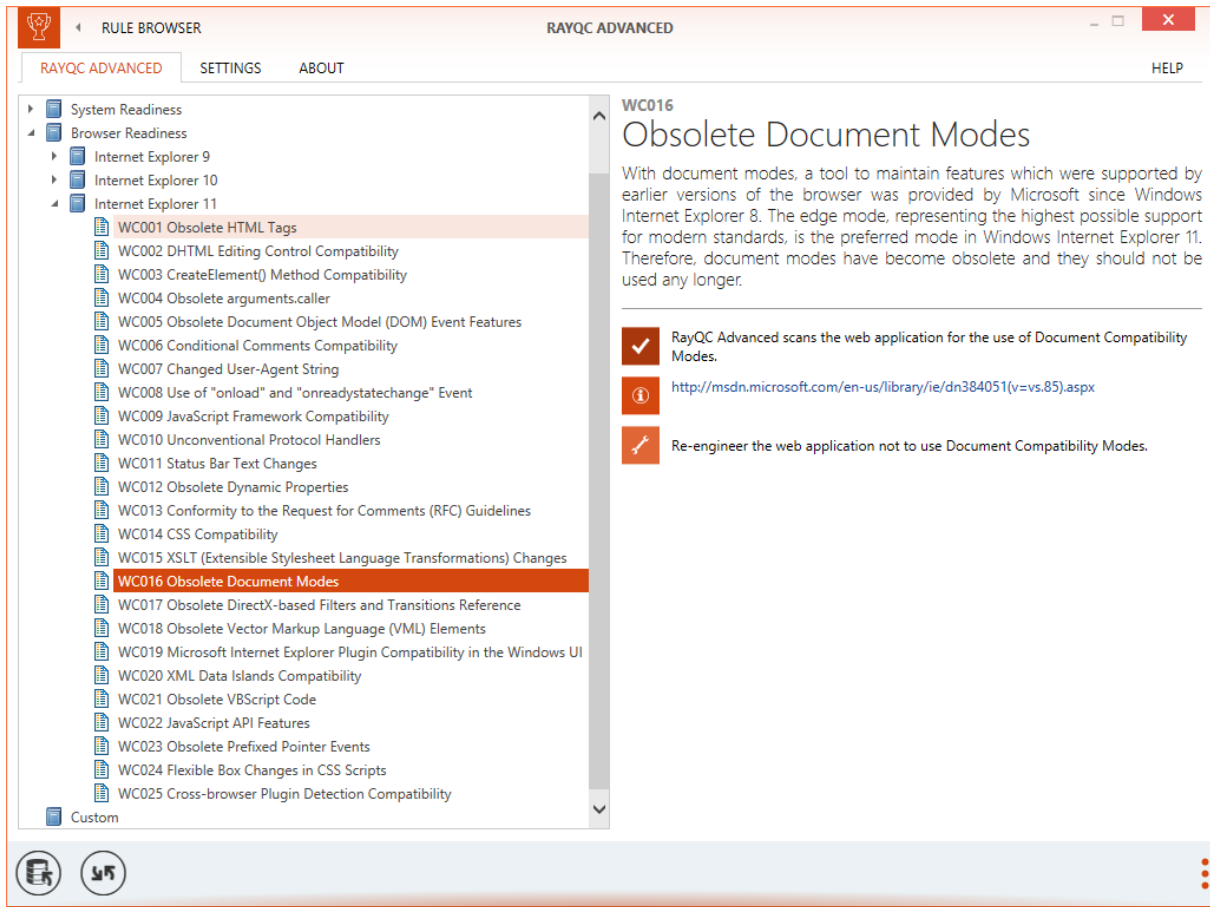
The ability to perform conformity tests for web applications against different browser has been added to the Test Wizard.

At the moment, conformity tests for Internet Explorer 9, Internet Explorer 10, and Internet Explorer 11 are supported.

The support for conformity tests against other browsers will be added with future releases of RayQC.



For the conformity tests on browsers, new rule sets have been added for Internet Explorer 9, Internet Explorer 10, and Internet Explorer 11.



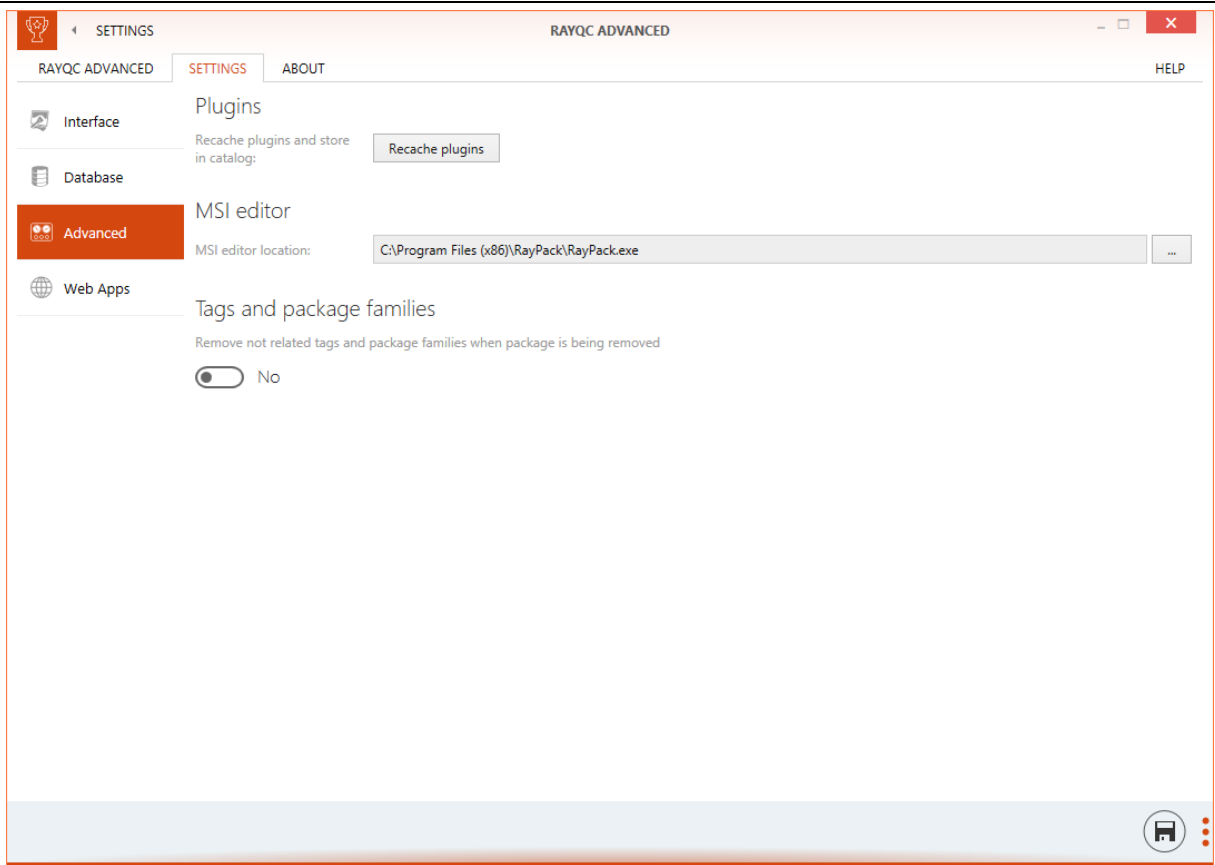
Command Line Support for Web Applications

RayQC comes with a standardized command line interface for automation and scripting requirements. This allows the execution of different actions in silent mode and allows the integration with RayFlow. With the release of RayQC 2.1 SP1, command line support for testing and importing of web applications has been added to the already existing command line interface.

MSI Editor Integration

Another new feature that has been added is the ability to open the source package inside a predefined MSI editor.

By default, RayPack is the MSI editor that is predefined in the Advanced view in the settings of RayQC. Further information about RayPack, Raynet's packaging framework, is available online: www.raypack.net.

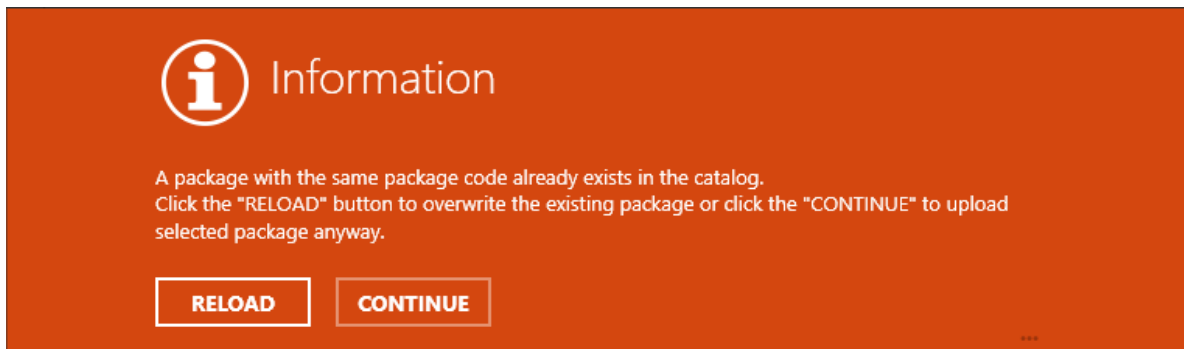


Resolved Issues

The following issues have been fixed during the implementation of RayQC 2.1 SP1.

- **RTS-754 - Importing identical snapshots does not give a warning message (as it is in case of Windows Installer packages).**

In RayQC 2.1 SP1, if a user imports an identical snapshot, a warning message is given.



With the **Reload** button the OS Snapshot can be reimported. With the **Continue** button a second OS Snapshot similar to the first one will be generated.

The Import Wizard can still be aborted by clicking the **Cancel** button later on.

- **RTS-565 - Truncated text when printing grid state with longer descriptions.**

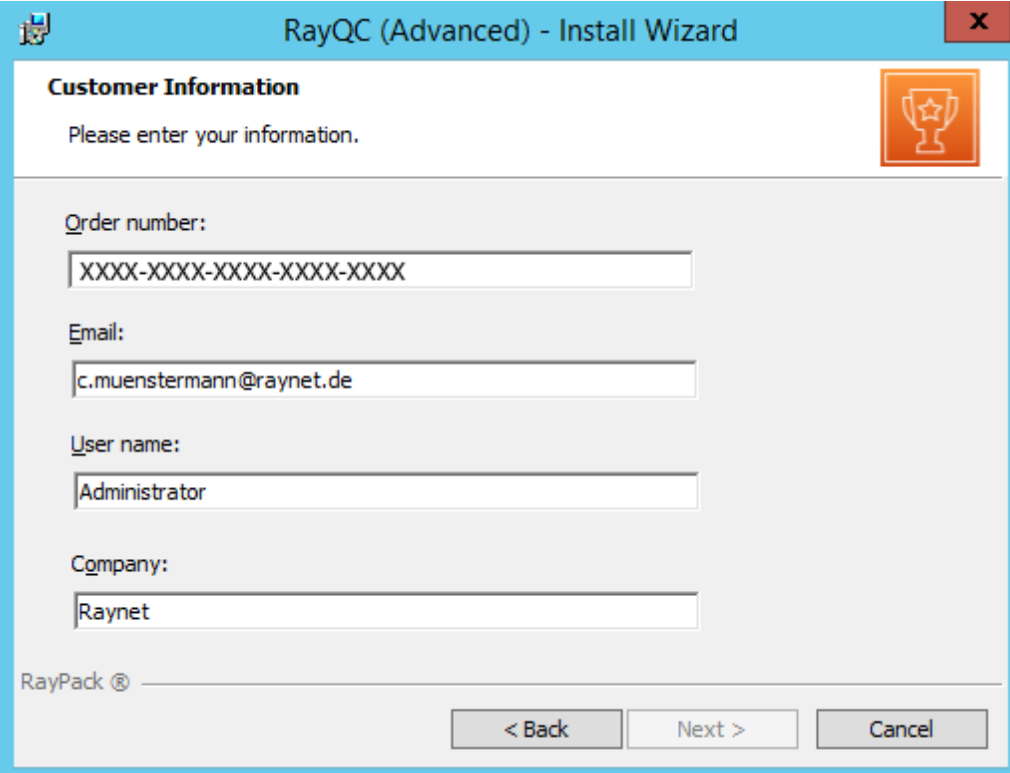
In RayQC 2.1 printing a report could lead to a fragmentary comment representation. This issue has been fixed in RayQC 2.1 SP1

Known Issues

The following list is a summary of known issues present in RayQC 2.1 SP1.

- **RTS-808 - The Next > button on the license activation page (installation wizard) is disabled, in case a focus is lost on the text box (e.g. Order number).**

If focus is lost on the text box (e.g. Order number), the **Next >** button on the license activation page is disabled.



The screenshot shows a window titled "RayQC (Advanced) - Install Wizard" with a close button (X) in the top right corner. The window contains a "Customer Information" section with the instruction "Please enter your information." and a RayQC logo. Below this are four text input fields: "Order number:" with the placeholder "XXXX-XXXX-XXXX-XXXX-XXXX", "Email:" with the value "c.muenstermann@raynet.de", "User name:" with the value "Administrator", and "Company:" with the value "Raynet". At the bottom left, it says "RayPack ®". At the bottom right, there are three buttons: "< Back" (disabled), "Next >" (disabled), and "Cancel".

Press TAB or go to another field to enable the **Next >** button again.

- **RTS-737 - Layout might get messed up if working with a specific combination of .NET Framework and graphic drivers.**

There is a known issue that, if working with a specific combination of .NET Framework and graphic drivers, the layout might get messed up.

System Requirements

Hardware Requirements

Minimal

- CPU Pentium IV / Core2 processor
- 2 GB RAM
- 1 GB free hard disk
- 1280x1024 screen resolution

Recommended

- CPU Intel Core i5 or i7
- 8GB RAM
- 40 GB free hard disk (software library usage)

Supported OS

- Windows 8.1 x64
- Windows Server 2012 R2
- Windows 8
- Windows 8 x64
- Windows Server 2012
- Windows 7
- Windows 7 x64
- Windows Server 2008 SP1
- Windows Server 2008 R2
- Windows Vista SP1
- Windows Vista x64
- Windows XP Professional SP3
- Windows Server 2003 SP1 x64

Prerequisite Software

- .Net 4.0 Full (32bit or 64bit)
- Windows Management Framework (including Windows PowerShell 2.0, WinRM 2.0, and BITS 4.0)
Please verify if the named or later versions are available on your device before using internal or external plugins in checklists.
For further details and download resources, visit <http://support.microsoft.com/en-us/kb/968929>.
- Microsoft SQL Server Express 2008 or higher is required for RayQC Advanced. The server can either be locally hosted or on a remote machine.



Be aware:

In order to be able to use external plugins with RayQC, it has to be ensured that the PowerShell version supported by the device that hosts the application matches the PowerShell version of the actual plugin script. It is highly recommended to synchronize the PowerShell version among all devices that are assigned for QA execution to prevent compatibility issues in the first place.

Additional Information

Further information regarding RayQC can be found in several resources which are available.

- The RayQC 2.1 SP1 Installation Guide provides IT professionals with a guide on how to install RayQC for the first time.
- The RayQC 2.1 SP1 User Guide provides detailed information about both, the RayQC Checklist management tool and the RayQC Advanced Collision management tool.
- The RayQC 2.1 SP1 Operations Supplement provides information about third-party software packages and libraries redistributed with RayQC.
- The product website www.rayqc.de provides information about the product, news, and support.
- Raynet and its partners offer a range of training courses that can also be customized to meet your requirements. For more information on these courses, speak with your Raynet consultant or contact the Raynet Sales department via sales@raynet.de.

Need Help?

Request RayQC support

Our Raynet support team gladly assists you on any question or issue you encounter regarding RayQC. Feel free to sign in and open incidents via our Raynet support panel, or by simply sending an email to support@raynet.de if you are an already registered Raynet customer.

Join the RaySuite community

The RaySuite community resides within our Knowledge Base: <https://raynet.de/Support/>. Once you have signed up for access to the Raynet support panel, you automatically have access to the Knowledge Base, too. You will surely come to a point where you would love to suggest a new feature for the future development of RayQC. Maybe you need to find some tips & tricks to hit your target right. the RaySuite community is your place for discussing such topics, for sharing and expanding your own experience.

Contact your Raynet sales representative

Our sales team is the right contact for any license or edition question you might encounter. Would you like to benefit from a professional RayQC training? Ask for dates and locations to find the right training to meet your needs. You are highly welcome to step in contact via sales@raynet.de.

Software Packaging Quality Control

RayQC is part of the RaySuite[®].

More information online
www.raynet.de

Raynet GmbH

Technologiepark 20
33100 Paderborn
Germany

T +49 5251 54009-0
F +49 5251 54009-29

General information: info@raynet.de
Product support: support@raynet.de