

10.2 *infinity* Release Notes





Table of Contents

Introduction	3
Deployment Manager	4
New Features in Deployment Manager	4
Resolved Issues	9
Known Issues	9
OS Deployment Manager	10
New Features in OS Deployment Manager	10
Resolved Issues	11
Security Manager	13
New Features in Security Manager	13
Known Issues	13
System Requirements	14
Hardware requirements	14
Prerequisite software	16
Compatibility	22
Compatible components	22
Upgrading from earlier releases	22
Additional Information	23



Introduction

RayManageSoft 10.2 *infinity* provides a complete set of products for software and operating system (OS) deployment, as well as security and patch management. The software includes four components for deploying, patching and securing applications and operating systems, all built on a common infrastructure that includes IT asset discovery, inventory and software asset management. The RayManageSoft client-centric architecture leverages existing IT hardware to speed up implementation and reduce costs for mid-size and large organizations.

Deployment Manager

Deployment Manager is the component of RayManageSoft that transforms desktops, servers, and mobile devices into self-managing, smart devices that continuously align with enterprise IT policies.

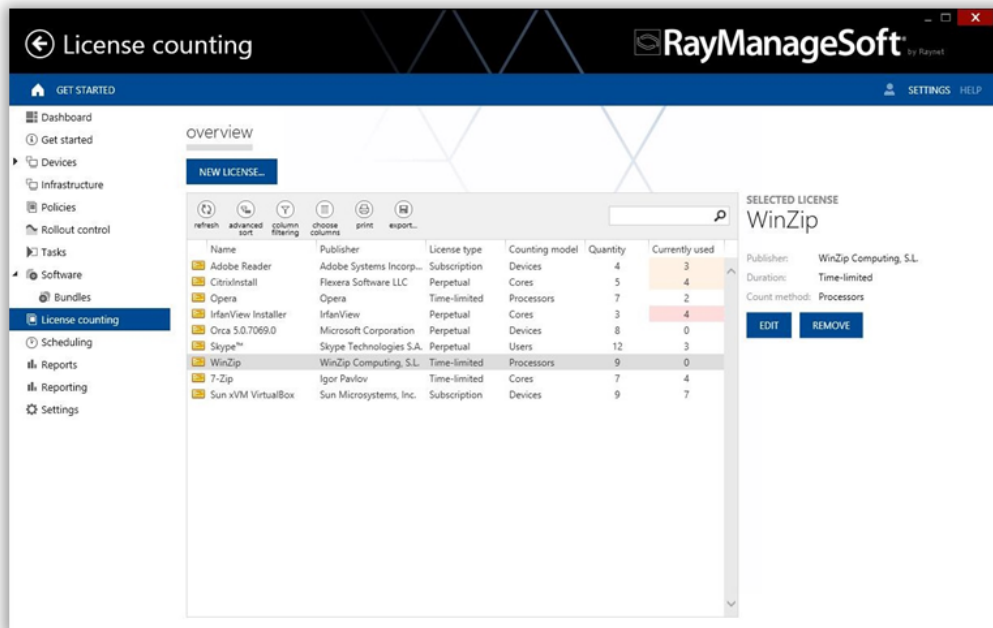
New Features in Deployment Manager

Extended Dashboard

In this new version, RayManageSoft Dashboard has been extended to include tiles representing the features License Counting and Sites. These tiles provide direct access to the overview of respective features.

License Counting

With this version of RayManageSoft, new snap-in license counting is introduced. License Counting gives user a quick and easy method to track number of licenses on a managed device for a particular software package.



Name	Publisher	License type	Counting model	Quantity	Currently used
Adobe Reader	Adobe Systems Incorp...	Subscription	Devices	4	3
Citrixdinstall	Flexera Software LLC	Perpetual	Cores	5	4
Opera	Opera	Time-limited	Processors	7	2
IrfanView Installer	IrfanView	Perpetual	Cores	3	4
Orca 5.0.7069.0	Microsoft Corporation	Perpetual	Devices	8	0
Skype™	Skype Technologies S.A.	Perpetual	Users	12	3
WinZip	WinZip Computing, S.L.	Time-limited	Processors	9	0
7-Zip	Igor Pavlov	Time-limited	Cores	7	4
Sun xVM VirtualBox	Sun Microsystems, Inc.	Subscription	Devices	9	7

The license counting component includes a feature for counting licenses on user, device, processor, and core basis. Taking into account the specified license per package and using data available through the database and inventory, it counts the number of instances that RayManageSoft deployable packages have been installed on a managed device and then it generates a summarized report with respect to the licenses used by users and computers.

The licenses created by the user, are stored in the licensing library which includes information regarding their name, publisher, type, authorized quantity and number of licenses currently in use. When a particular license is selected from the list, the information including its publisher, duration and count method is displayed on the left sidebar along with the **EDIT** and **REMOVE** button, which can be used to edit a license or remove it from the license list.

New Distribution Wizard

In an effort to provide the user with a clear and consistent user interface, the old Package Distribution Wizard interface has been replaced with a new interactive one.

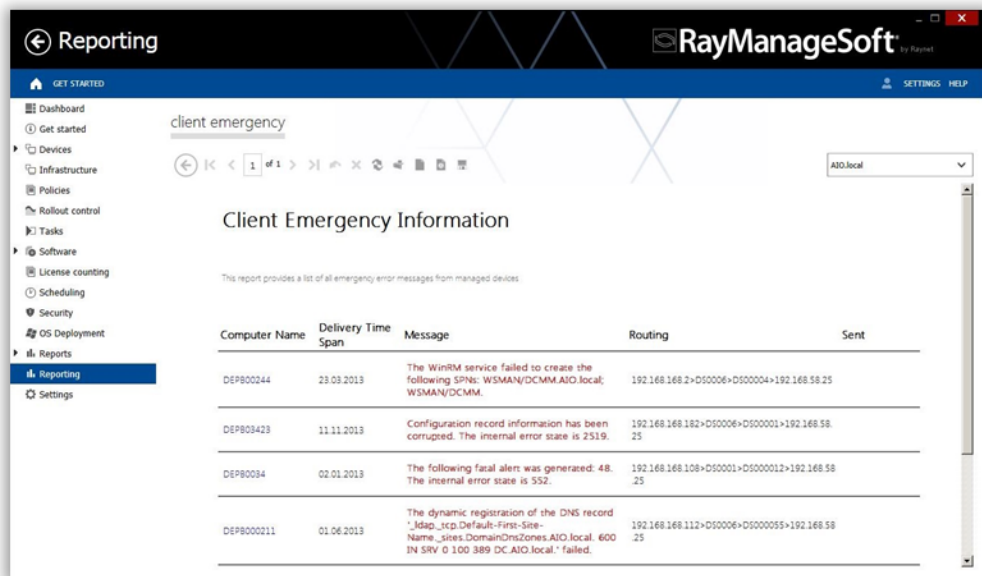
New Messaging System

To provide users with the real time information regarding the status of managed devices and their policy complaint state, two new features - Health Check and Lost & Found - have been added in this version of RayManageSoft. These features are part of the RMS Messaging System.

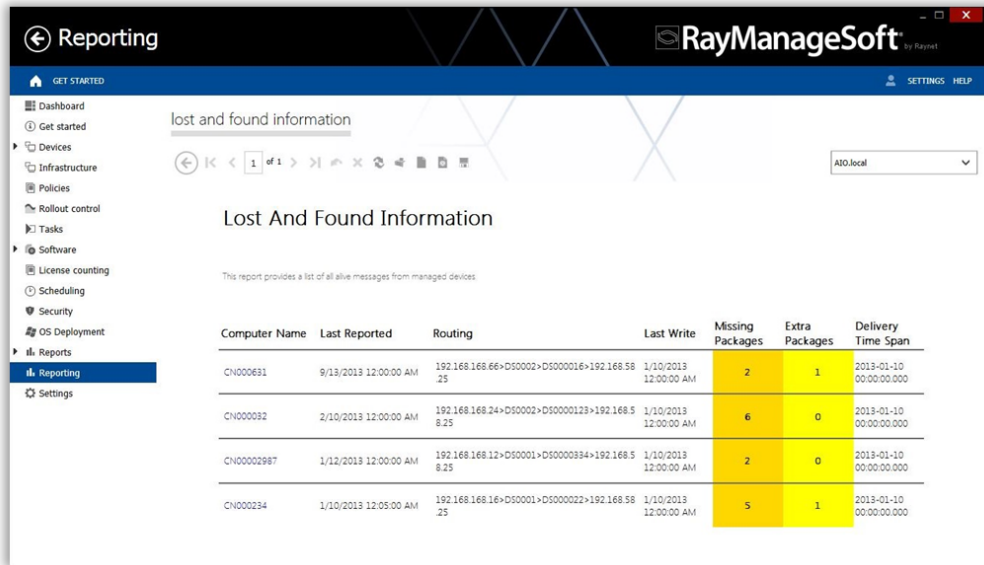
The RMS Messaging System uses its services to gather information on the distribution hierarchy and then this information is used to set up a communication channel between managed device(s) and the administration server. On the managed device(s), "RMSClientService"- a client agent independent of the RayManageSoft core services is installed.

"RMSClientService", reads the settings of its client and starts up two schedules "Heartbeat" and "Emergency". Based on the configured schedule, the service sends information in form of a heartbeat to the administration server. The information sent includes the state of client's policy compliance and status of the RayManageSoft core services.

RMS Messaging System service, updates the RayManageSoft database with the information received from the managed device(s). The information is available as reports, through the Reporting component of the Deployment Manager. As part of the Health-Check feature, the report contains information pertaining to the failure of client services.



Along with the information provided under Health-Check feature, information regarding the client policy compliance and its availability (last reporting time) is provided as part of the Lost & Found feature.



lost and found information

lost and found information

Lost And Found Information

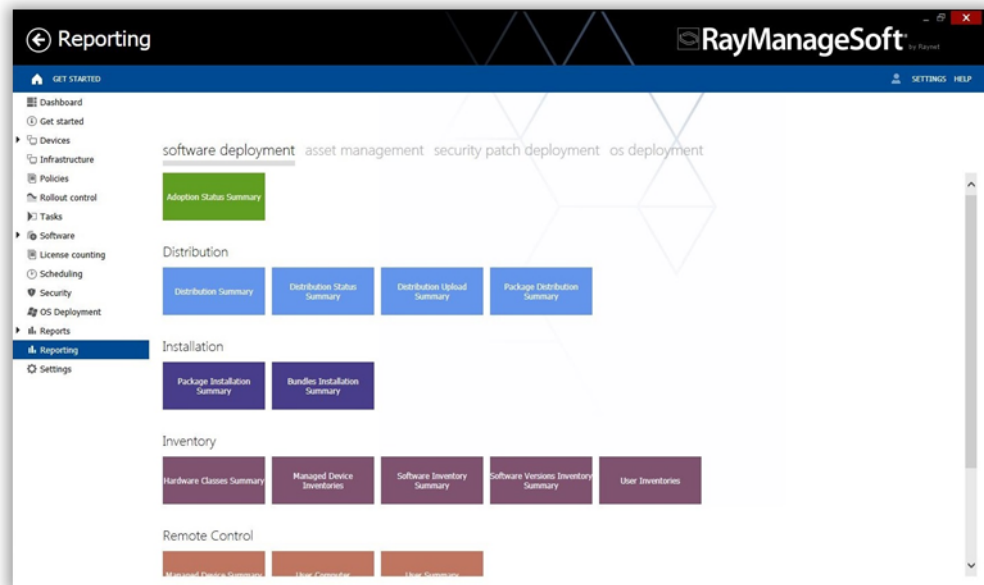
This report provides a list of all alive messages from managed devices

Computer Name	Last Reported	Routing	Last Write	Missing Packages	Extra Packages	Delivery Time Span
CN000631	9/13/2013 12:00:00 AM	192.168.168.66>D50002>D5000016>192.168.58.25	1/10/2013 12:00:00 AM	2	1	2013-01-10 00:00:00.000
CN000032	2/10/2013 12:00:00 AM	192.168.168.24>D50002>D50000123>192.168.5.8.25	1/10/2013 12:00:00 AM	6	0	2013-01-10 00:00:00.000
CN00002987	1/12/2013 12:00:00 AM	192.168.168.12>D50001>D50000394>192.168.5.8.25	1/10/2013 12:00:00 AM	2	0	2013-01-10 00:00:00.000
CN000234	1/10/2013 12:05:00 AM	192.168.168.16>D50001>D5000022>192.168.58.25	1/10/2013 12:00:00 AM	5	1	2013-01-10 00:00:00.000

Enhanced Reporting

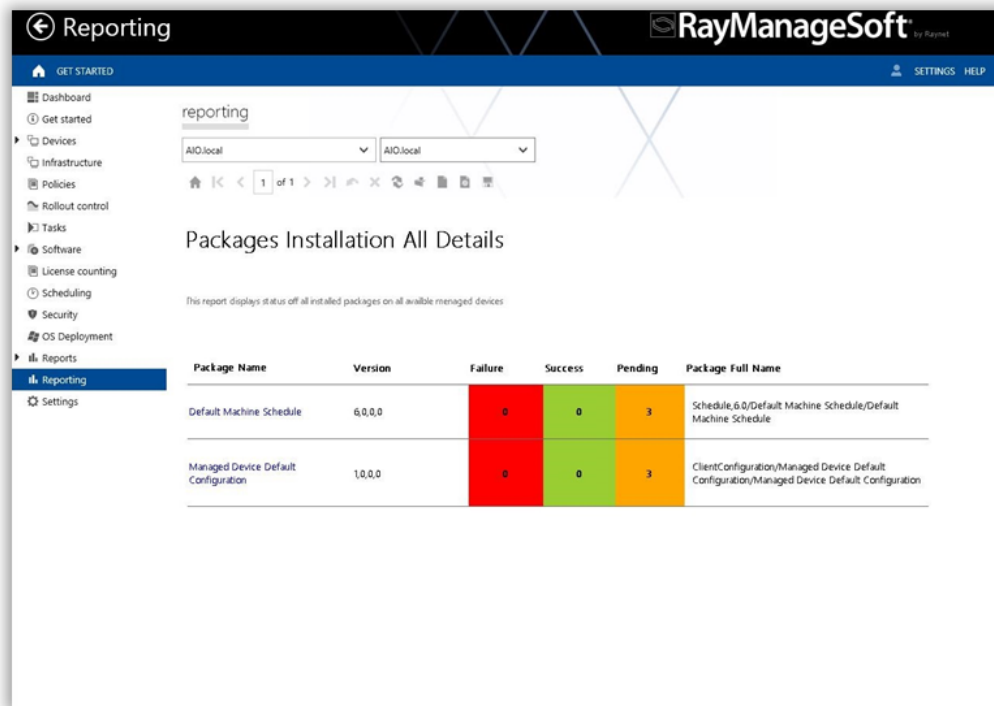
The reporting component of the RayManageSoft *infinity* provides its user a comprehensive, flexible and fast reporting solution. Using the SQL Server Reporting Services, the user can easily generate reports and customize it according to their needs and requirements. After generating the reports, the reporting component provides a highly interactive platform to import, organize and view those reports.

Deployment Manager Reporting Snap-In consists of two sections overview and report viewer. The overview section consists of tabs, which reflects user defined report groups. Each report group is shown within one group. Once a tab is called the available reports can be opened by clicking on a representing tile. User definable headers can be defined to organize tiles into convenient, intuitive sub-groups.



In the report viewer, tool bar available at the top, provides the user with various options including print view,

refresh, page setup, page navigation and possibility to export reports in various formats.

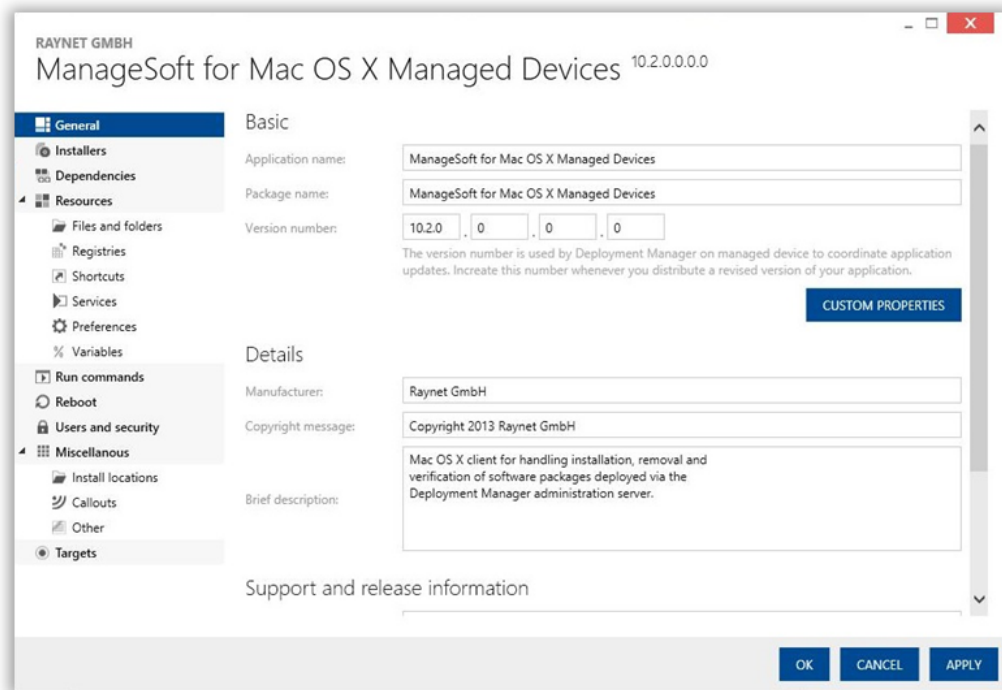


Key Features of the Reporting feature can be summarized as:

- RDL based reports
- Reports can be created in various forms including graphical, tabular and interactive
- User defined report management
- SQL Server Reporting Services provides the user with a full range of ready-to-use tools and services, which can be used with the new reporting feature
- Possibility to export reports in various formats
- Flexible and Fast

Enhanced Packaging

Taking the next step towards enhancing the packaging experience with RayManageSoft Deployment Manager, the Package Editor in this release comes with a new look. In this enhanced look, all the configurable properties of a package are now available in form of a tree in the left sidebar of the wizard. Using the sidebar the user can now easily access, configure and change properties of a package.



In addition to the new look, features including Create a copy, Registry Import, and Recent Packages are introduced.

Create a copy

Create a copy feature can be accessed through the Software Library by right clicking on a package and selecting 'Create a copy' option from the context menu. The user has the possibility to create three different types of package copies including creating a deep copy of the package, creating a new version of the application and creating a new revision of the package without changing the application name and its version.

Registry Import

Within the Registry section of the Package Editor a new button has been added. The user can directly import registry files by clicking on it, to the package. These registry files can be edited or removed by using the Edit and Remove button available in the right sidebar or by simply double clicking on the registry item.

Recently Edited

In an attempt to improve accessibility, a new option 'Recently edited' has been added to the context menu shown when one right clicks on the Software item in the RayManageSoft Console tree. This option lists all the packages that had been recently edited in the software library.

Resolved Issues

Policies overview performance

The performance of specific views within RayManageSoft depends on multiple factors, such as the given complexity of Active Directory and policy structures, or capacity of the physical Administration Server machine components.

With the previous release, Raynet received customer feedback regarding performance issues which have been experienced during the initial retrieval of data required for the policies overview page. After analysis of the underlying algorithms, an advanced data collection procedure, which noticeably increases the performance of the policies overview page, has been implemented in this current release.

Access restriction to Policy Information

Earlier releases of RayManageSoft only allowed users belonging to the domain administrator group to access the policy information. This restriction has been removed to enable access to the policy information by users with access rights.

Multiple Package Distribution performance

When a package is distributed to the distribution locations or location groups, a distribution job is created. Because of an issue, multiple numbers of distribution job were created when multiple packages were distributed. This affected the performance of package distribution. This issue has been resolved in the current release.

Infrastructure information storage

The information about the distribution locations and hierarchy is stored in the RayManageSoft database and in hierarchy.cfg file. Because of a replication issue in the previous releases, the information at the two storage locations were not synchronized and differed from each other. The issue is resolved in the current release.

Security Patch deployment using Rollout Control

An issue with the deployment of security patches using the Rollout Control has been fixed in this release.

Known Issues

Reporting With SQL 2005

The new Reporting component of Deployment Manager has some issues while working with SQL Server 2005. The issue is being worked upon and will be corrected in future.

OS Deployment Manager

OS Deployment Manager automates the process of deploying and installing Microsoft Windows® XP, Vista, 7, 8, Windows Server® 2003, 2008 and 2012 operating systems on computers throughout the IT infrastructure, even with limited connectivity or IT support. It eases the migration from one OS version to another and is an essential tool for a Windows® 8 deployment.

New Features in OS Deployment Manager

Improved User Interface

New Update Database option

New functional option naming Update Database has been added to the context menu available on right-click to the OS Deployment item in the console tree. Update database allow the user to directly import computers from the Active Directory to the RayManageSoft database.

New Distribution Wizard

To bring in line with the interactive and user friendly user interface of RayManageSoft, the old computer name mapping distribution wizard in OS Deployment Manager has been replaced with the new one.

Image Mounting Status

With the provision of providing optimal usability experience with RayManageSoft, a new feature with enhanced interface behavior for image mounting in OS deployment manager is available in this version. When an image is mounted the side-bar on the right and the context menu available on the image are disabled. Furthermore, the mounting status is displayed in the side-bar on the right, and when the status is shown as "Image is mounted", then it can be clicked to open the image folder in the file explorer.

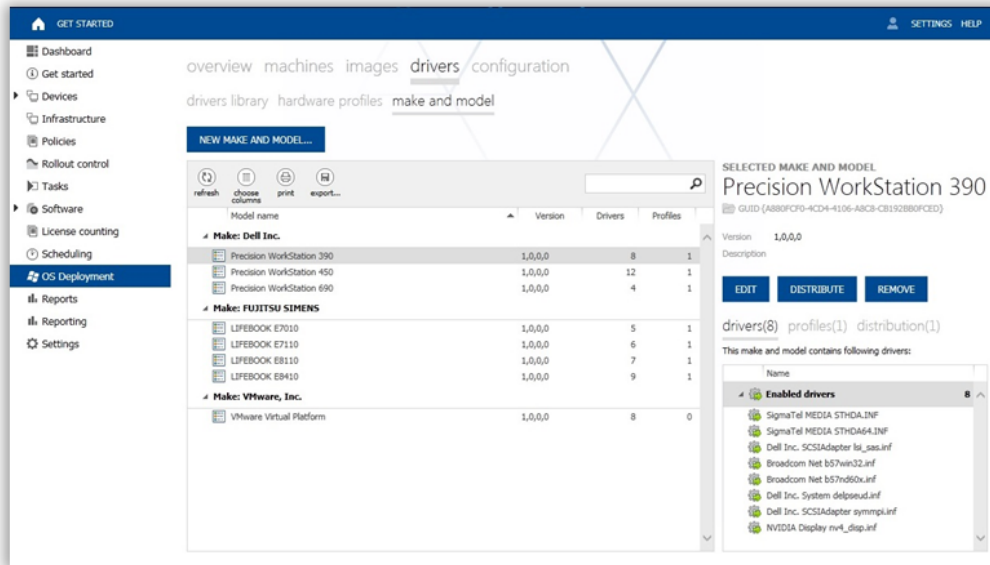
Automated Detection of Drivers

OS Deployment Manager in this version of RayManageSoft uses information from the drivers .inf file to import the driver (and any corresponding files) into the driver library. During import, the OS Deployment Manager verifies the information to be imported to avoid adding redundant drivers to the library. It also uses the information contained within the .inf file to create the name of the driver, based on the manufacturer, Driver Class and the name of the .inf file.

The drivers can be added to a hardware profile which can directly be assigned to a machine. A driver can either be added to the hardware profile from the library, or a new driver can also be added by simply choosing 'Add New Driver' from the context menu.

Make and Model

Make and Model is a new feature added to the OS Deployment Manager. It allows the user to add for a hardware, its manufacturer (Make) and model (Model) to the database and automatically allocate drivers to them. For every Make and Model it is possible to add hardware profile(s) as well as single driver(s) or both.



Using Make and Model, a user can automatically assign drivers to a machine, by simply entering the machines manufacturer and its model. After the installation of the WinPE, the drivers defined under the Make and Model for the machine is automatically delivered to it.

Resolved Issues

Images and More Button

The **MORE** button on the right side-bar provides more functional options that can be executed on different types of images in the OS Deployment Manager. The functional options, generally available in form of a menu is listed based on the relevance to the type of image. In the previous release, because of some issues relating to the interface, the functions menu was not correctly listed. The issue is resolved in the RayManageSoft *infinity* 10.2.

Deleting a Boot Image

An issue relating to a possibility of choosing to remove an OS image from OS Image Library or All Distribution Servers (but not both) is resolved with the current release.

OS Deployment Manager Interface

In the previous release, due to an issue with the OS Deployment Manager interface, different buttons under the options including Machines, Images, Drivers and Configuration appeared gray instead of being blue. The issue has been resolved in the current release.

Security Manager

Security Manager protects organizations by automatically monitoring the authoritative sources of patch data for Windows devices. It provides alerts for new patches and streamlines the process of deploying patches to devices across the enterprise. Flexible workflows allow patch deployment to the entire enterprise, specific organizational units or individual users and computers.

New Features in Security Manager

Support for Non-MS Patches

With this version of RayManageSoft, Security Manager component has been extended to support patching for third-party software products. Hence current patches and updates for software's including the Java Runtime Environment v. 7, Adobe Reader v. 11 and Adobe Flash Player are available in the RayManageSoft database and can be deployed using the security patch manager. In the future, the plan is to extend support to more third-party software products.

Support for Microsoft Security Advisories

In addition to the existing support for Microsoft Security Bulletins, this release of RayManageSoft extends its support to Microsoft Security Advisories. Microsoft Security Advisories are the security recommendations from Microsoft that address the changes related to the security that may not be classified as vulnerability and therefore does not require a security bulletin. With this release of RayManageSoft advisories will be available along with the bulletins in the Security Manager corresponding to its release by Microsoft and can be deployed in the same way as bulletins through the Security node of Deployment Manager.

New Context Menu

To make it more convenient for users to execute basic functions on a patch in Security Patch Manager Library, context menu has been added. A user can simply right click on a single patch or selection of multiple patches and through context menu can execute existing functions including download, distribute, production emergency, process and visibility.

Known Issues

Security Manager Installation

In the main installation of RayManageSoft Deployment Manager, the option of installing the Security Manager is present. Even if this option is selected, the Security Manager will not be installed. This is a known issue and will be remedied in future versions.

To install the Security Manager, the separate installation routine will have to be used.

System Requirements

This section describes the compatibility of RayManageSoft 10.2 *infinity* products. If installing any components of RayManageSoft on the same server, the version of that component must also be 10.2 *infinity*.

Hardware requirements

Basic requirements

For devices running the Deployment Manager Administration Console or the Managed Device Selector

- Minimum screen resolution: 1024 x 768 pixels
- Minimum color settings: 8 bit (256 colors)

Core servers

- Minimum RAM: 2GB
- Recommended RAM: 4GB or higher
- Minimum disk space: 1GB

Reports servers

- Minimum RAM: 2GB
- Recommended RAM: 4GB or higher
- Minimum disk space: 1GB

Data servers

- Minimum RAM: 2GB
- Recommended RAM: 4GB or higher
- Minimum disk space: 1GB
 - Additional 40GB for systems including OS Deployment Manager
 - Additional 30 GB for systems including Security Manager

Site servers

- Minimum RAM: 1GB
- Recommended RAM: 2GB or higher
- Minimum disk space: 100MB

Remote console

- Minimum RAM: 1GB
- Recommended RAM: 2GB or higher
- Minimum disk space: 700MB

Distribution servers

- Minimum RAM: 1GB
- Recommended RAM: 2GB or higher
- Minimum disk space: 1GB
 - Additional 20GB for systems including OS Deployment Manager
 - Additional 30 GB for systems including Security Manager

Managed devices

- Minimum RAM: 512MB
- Recommended RAM: 1GB or higher
- Minimum disk space: 300MB

Prerequisite software

The table below describes the supported operating systems and software prerequisites of RayManageSoft 10.2 *infinity* at the time of release.

Component	Operating system	Prerequisite software
Core Server	<ul style="list-style-type: none"> • Windows 2012 R2 Server • Windows 2012 Server • Windows 2008 R2 Server¹ • Windows 2008 Server SP1-SP2 • Windows 2008 Server x64 SP1-SP2¹ • Windows 2003 R2 Server • Windows 2003 R2 Server x64¹ • Windows 2003 Server SP2 • Windows 2003 Server x64 SP2¹ 	<ul style="list-style-type: none"> • .NET Framework 4.0 • Jre-7u45-windows-i586 x86 • Internet Explorer 7.0 to 10.0 • Microsoft Internet Information Services 6.0 to 8.0 <p><u>For OS Deployment Manager:</u></p> <ul style="list-style-type: none"> • Microsoft Windows Automated Installation Kit (WAIK) with WinPE 3.0 or 3.1 for Windows versions from XP to 7 • Windows Assessment and Deployment Kit (ADK) with WinPE 3.1 or later for Windows 8 • Microsoft Windows Deployment Services (WDS - required only if you intend to use PXE support) • Microsoft Sysprep • Symantec Ghost Corporate Edition 7.5 or 8.0 Ghost Server (required only if Symantec Ghost is to be used for imaging) • Microsoft Excel 2000 or later (required only for asset discovery import from Excel)
Remote Console	<ul style="list-style-type: none"> • Windows 2012 R2 Server • Windows 2012 Server • Windows 2008 R2 Server • Windows 2008 Server SP1-SP2 • Windows 2008 Server x64 SP1-SP2 • Windows 2003 R2 Server • Windows 2003 R2 Server x64 • Windows 2003 Server SP2 • Windows 2003 Server x64 SP2 • Windows 8.1 • Windows 8 • Windows 8 x64 	<ul style="list-style-type: none"> • .NET Framework 4.0 • Internet Explorer 7.0 to 10.0

	<ul style="list-style-type: none"> • Windows 7 • Windows 7 x64 • Windows Vista • Windows Vista x64 • Windows XP Professional • Windows XP Professional x64 	
Data Server	<ul style="list-style-type: none"> • Windows 2012 R2 Server • Windows 2012 Server • Windows 2008 R2 Server • Windows 2008 Server SP1-SP2 • Windows 2008 Server x64 SP1-SP2 • Windows 2003 R2 Server • Windows 2003 R2 Server x64 • Windows 2003 Server SP2 • Windows 2003 Server x64 SP2 	<ul style="list-style-type: none"> • SQL Server 2005 SP2 to SP4 with Reporting Services • SQL Server 2008 with Reporting Services • SQL Server 2008 SP1 with Reporting Services • SQL Server 2008 R2 with Reporting Services • SQL Server 2012 with Reporting Services • SQL Server Tools and Workstation Components 2005, SQL Server 2008, SQL Server 2012 Features: Client Tools Connectivity, Management Tools • .NET Framework 4.0
Reports Server	<ul style="list-style-type: none"> • Windows 2012 R2 Server • Windows 2012 Server1 • Windows 2008 R2 Server1 • Windows 2008 Server SP1-SP2 • Windows 2008 Server x64 SP1-SP21 • Windows 2003 R2 Server • Windows 2003 R2 Server x641 • Windows 2003 Server SP2 • Windows 2003 Server x64 SP21 	<ul style="list-style-type: none"> • .NET Framework 4.0 • Internet Explorer 7.0 to 10.0 • Reporting Services (same release as the database) • Internet Information Services 6.0 to 8.0
Site Server (OS Deployment Manager only)	<ul style="list-style-type: none"> • Windows 2012 R2 Server • Windows 2012 Server • Windows 2008 R2 Server • Windows 2008 Server SP1-SP2 • Windows 2008 Server x64 SP1-SP2 • Windows 2003 R2 Server • Windows 2003 R2 Server x64 • Windows 2003 Server SP2 	<ul style="list-style-type: none"> • Microsoft Windows Automated Installation Kit (WAIK) with WinPE 3.0 or 3.1 for Windows versions from XP to 7 • Windows Assessment and Deployment Kit (ADK) with WinPE 3.1 or later for Windows 8 • Microsoft Windows Deployment Services (WDS required only if you intend to use PXE support) • Symantec Ghost Corporate Edition 7.5 or 8.0 Ghost Server (required only if Symantec

	<ul style="list-style-type: none"> Windows 2003 Server x64 SP2 <p><u>Supported, but not recommended:</u></p> <ul style="list-style-type: none"> Windows 8.1 Windows 8 Windows 8 x64 Windows 7 Windows 7 x64 Windows Vista Windows Vista x64 Windows XP Professional Windows XP Professional x64 	<p>Ghost is to be used for imaging²⁾</p> <ul style="list-style-type: none"> Internet Explorer 7.0 to 10.0
<p>Managed Device</p>	<ul style="list-style-type: none"> Windows 2012 Server Windows 2008 R2 Server Core Windows 2008 R2 Server Windows 2008 Server Core Windows 2008 Server Windows 2008 Server Core x64 Windows 2008 Server x64 Windows 2003 R2 Server Windows 2003 R2 Server x64 Windows 2003 Server SP2 Windows 2003 Server x64 SP2 Windows 8.1 Windows 8 Windows 8 x64 Windows 7 Windows 7 x64 Windows Vista Windows Vista x64 Windows XP Professional Windows XP Professional x64 Windows XP Home <p><u>For Deployment Manager:</u></p>	<ul style="list-style-type: none"> Internet Explorer 7.0 to 10.0 (Windows platforms only) Java SE Runtime Environment (build 1.6.0) (Mac OS X 10.7 only)

	<ul style="list-style-type: none"> • RedHat Linux 8 and 9 • RedHat Enterprise Linux 3, 4, 5, 6, 6.1 • CentOS 4, 5, 6 • Fedora 6 - 11 • SuSE Professional/OpenSuSE 9, 10, 11 • SuSE Enterprise Server (SLES) 9, 10, 11 • Solaris 9, 10, 11 (Intel) • Solaris 8, 9, 10, 11 (SPARC) • Mac OS X 10.3, 10.4, 10.5, 10.6, 10.7 • AIX 5.2, 5.3, 6.1, 7.1 • HP-UX 11.00, 11i, 11i v2, 11i v3 	
<p>Packaging Server</p>	<ul style="list-style-type: none"> • Windows 2012 R2 Server • Windows 2012 Server • Windows 2008 R2 Server • Windows 2008 Server • Windows 2008 Server x64 • Windows 2003 R2 Server • Windows 2003 R2 Server x64 • Windows 2003 Server SP2 • Windows 2003 Server x64 SP2 <p><u>Supported, but not recommended:</u></p> <ul style="list-style-type: none"> • Windows 8.1 • Windows 8 • Windows 8 x64 • Windows 7 • Windows 7 x64 • Windows Vista • Windows Vista x64 • Windows XP Professional • Windows XP Professional x64 	<ul style="list-style-type: none"> • .NET Framework 4.0 • Internet Explorer 7.0 to 10.0
<p>Snapshot Wizard</p>	<ul style="list-style-type: none"> • Windows 2012 R2 Server • Windows 2012 Server • Windows 2008 R2 Server 	

	<ul style="list-style-type: none"> • Windows 2008 Server • Windows 2008 Server x64 • Windows 2003 R2 Server • Windows 2003 R2 Server x64 • Windows 2003 Server SP2 • Windows 2003 Server x64 SP2 • Windows 8.1 • Windows 8 • Windows 8 x64 • Windows 7 • Windows 7 x64 • Windows Vista • Windows Vista x64 • Windows XP Professional • Windows XP Professional x64 	
<p>Distribution Server</p>	<ul style="list-style-type: none"> • Windows 2012 R2 Server • Windows 2012 Server • Windows 2008 R2 Server Core • Windows 2008 R2 Server • Windows 2008 Server Core • Windows 2008 Server • Windows 2008 Server Core x64 • Windows 2008 Server x64 • Windows 2003 R2 Server • Windows 2003 R2 Server x64 • Windows 2003 Server SP2 • Windows 2003 Server x64 SP2 <p><u>Supported, but not recommended:</u></p> <ul style="list-style-type: none"> • Windows 8.1 • Windows 8 • Windows 8 x64 • Windows 7 • Windows 7 x64 • Windows Vista 	<ul style="list-style-type: none"> • .NET Framework 4.0 • Jre-7u45-windows-i586 x86 • Internet Explorer 7.0 to 10.0

	<ul style="list-style-type: none">• Windows Vista x64• Windows XP Professional• Windows XP Professional x64	
--	---	--

¹ Requires IIS to run in 32 bit mode

² Please be aware of the fact that there are no intentions to provide ongoing support for later versions of Symantec Ghost.

Compatibility

This section describes the compatibility of RayManageSoft 10.2 *infinity* products. If installing any components of RayManageSoft on the same server, the version of that component must also be 10.2 *infinity*.

Compatible components

Versions of distribution servers and managed devices that can be managed by Deployment Manager 10.2 *infinity*:

Component	Compatible versions
Deployment Manager for distribution servers	10.x
Deployment Manager for managed devices (Windows)	10.x
Deployment Manager for managed devices (Linux)	10.x
Deployment Manager for managed devices (Solaris)	10.x
Deployment Manager for managed devices (Mac OS X)	10.x
Deployment Manager for managed devices (AIX)	10.x
Deployment Manager for managed devices (HP-UX)	10.x

Versions of distribution servers and managed devices that can be managed by OS Deployment Manager 10.2 *infinity* and Security Manager 10.2 *infinity*:

Component	Compatible versions
Deployment Manager for distribution servers	10.x
Deployment Manager for managed devices (Windows)	10.x

Upgrading from earlier releases

The last version before this release was 10.1; therefore that upgrade path is the regarded as the RMS standard upgrade procedure. To upgrade from releases earlier than 10.1, please consult your Raynet support representative.

Please note that the system requirements have changed during the last Deployment Manager releases. Make sure to meet the system requirements during each step of the migration process to ensure a stable system status at all times.

Additional Information

Visit www.raymanagesoft.com for further information on RayManageSoft, and take a look at the additional resources available at the Knowledge Base: <http://knowledgebase.raymanagesoft.com>.

Raynet is looking forward to receiving your feedback from your RayManageSoft experience. Please contact your Raynet service partner or write an e-mail to support@raynet.de to add your ideas or requirements to the RayManageSoft development roadmap!

RayManageSoft is part of the RaySuite

More information online
www.raynet.de

Raynet GmbH

Technologiepark 20
33100 Paderborn
Germany

T +49 5251 54009-0
F +49 5251 54009-29

General information: info@raynet.de
Product support: support@raynet.de