

RayEval 2.1 SP1 Release Notes





**Copyright © Raynet GmbH (Germany, Paderborn HRB 3524). All rights reserved.
Complete or partial reproduction, adaptation, or translation without prior written permission is prohibited.**

RayEval Release Notes

Raynet and RayFlow are trademarks or registered trademarks of Raynet GmbH protected by patents in European Union, USA and Australia, other patents pending. Other company names and product names are trademarks of their respective owners and are used to their credit.

The content of this document is furnished for informational use only, is subject to change without notice, and should not be construed as a commitment by Raynet GmbH. Raynet GmbH assumes no responsibility or liability for any errors or inaccuracies that may appear in this document. All names and data used in examples are fictitious unless otherwise noted.

Any type of software or data file can be packaged for software management using packaging tools from Raynet or those publicly purchasable in the market. The resulting package is referred to as a Raynet package. Copyright for any third party software and/or data described in a Raynet package remains the property of the relevant software vendor and/or developer. Raynet GmbH does not accept any liability arising from the distribution and/or use of third party software and/or data described in Raynet packages. Please refer to your Raynet license agreement for complete warranty and liability information.

Raynet GmbH Germany
See our website for locations.

www.raynet.de



Table of Contents

Introduction	4
New Features in RayEval	5
Resolved Issues	8
System Requirements	10
Additional Information	11
Need Help?	12

Introduction

RayEval facilitates a semi-automated capture of an installation routine including choice selections and configuration input. Captured data can then be edited and exported into a PDF or Word format document. Generally, such documentation must be created manually with screenshots of button choices, generation of text boxes, writing of instructional text, and so on. However, RayEval accomplishes this semi-automatically in three easy steps.

The packager selects the section where they want to have screenshots, and it is automatically stored sequentially for them. Next, they take screenshots simply by clicking the middle mouse button (default setting) or a different key if preferred by the user. After the screenshots have been made in each section, the project documentation can be saved in a RayEval file (with .rex extension) or easily exported to Microsoft Word/PDF format. The result is a complete file that includes documentation of an evaluation based on the selected template. The outcome is a professional looking document with a table showing the separate sections and screenshots. If needed, additional information can be added at a later time.

In this release of RayEval 2.1 SP1, there are many new features and enhancements that come as a direct result of the comments and feedback from our customers. The new features in version 2.1 SP1 meet the need of our current customers and the demand of the current market. Some of those demands have to do with improving performance, providing more options in the settings snap-in, which is meant to provide its users an intuitive and interactive graphical platform to create evaluation documents; without having to deal with the syntactical cluttering.

Welcome to RayEval 2.1 SP1.

New Features in RayEval

RayEval Installer

RayEval was available in the form of a portable application in previous versions. In this release, RayEval is now a MSI application, providing the added advantages offered by the Windows Installer technology, like self-healing, upgrading to a new version, selective installation of features and plugins, just to name a few. However, a portable version can still be created by performing a MSI administrative installation.

Support for Microsoft Word 2013 Templates

Due to having its Spire.Doc Libraries upgraded, RayEval now supports templates in .docx format that are created using Microsoft Word 2013 for exporting the evaluation results.

New License Activation Tool

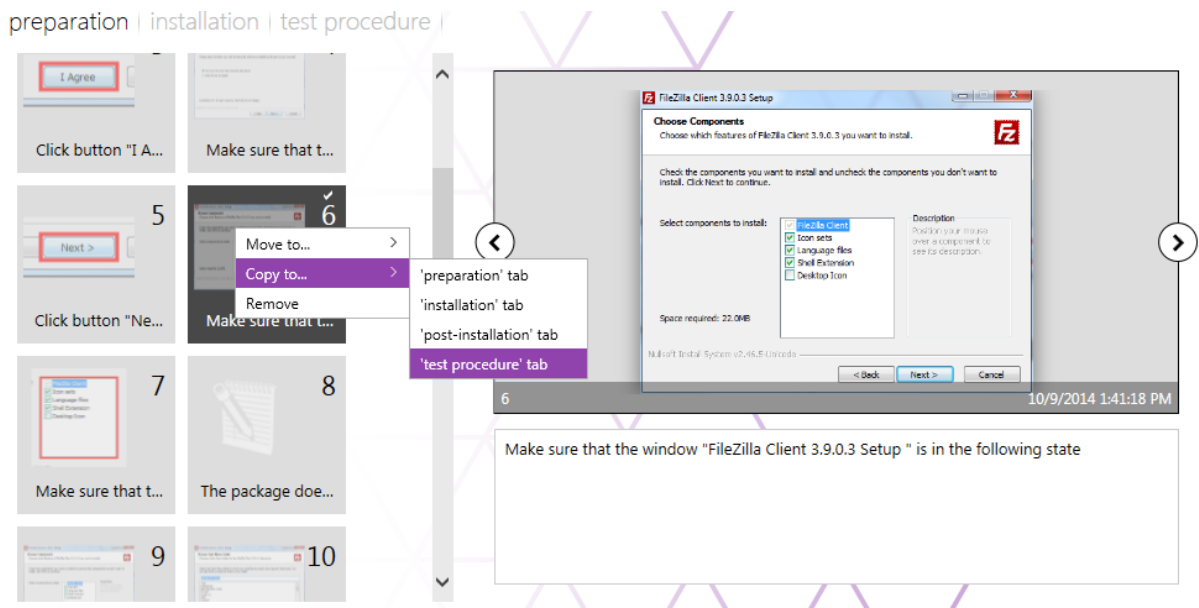
The license activation tool now offers various options for a user to activate RayEval before using it. The tool offers activation of the application in both online and offline modes. For online activation, a user needs to provide the order number of their purchase and for the offline activation the license file provided by Raynet is required.

Added New Special Property @DATE

With the new property “@DATE” in RayEval, it is now possible to insert a date into the evaluation documents.

Moving and Copying of Evaluation Steps

In previous versions of RayEval, a context menu with the “Remove” option was made available when a right click was performed on an evaluation step. Now, this context menu has been extended with two additional options: “Move to” and “Copy to”. Using these options a user can either move an evaluation step to another tab or simply copy the step from its existing tab to the desired selected tab.



New Options in the Settings Snap-in

New functional options have been added to the “Settings” snap-in of RayEval. These options are arranged under the “user interface” and “templates” tabs. The newly added options include:

• User Interface

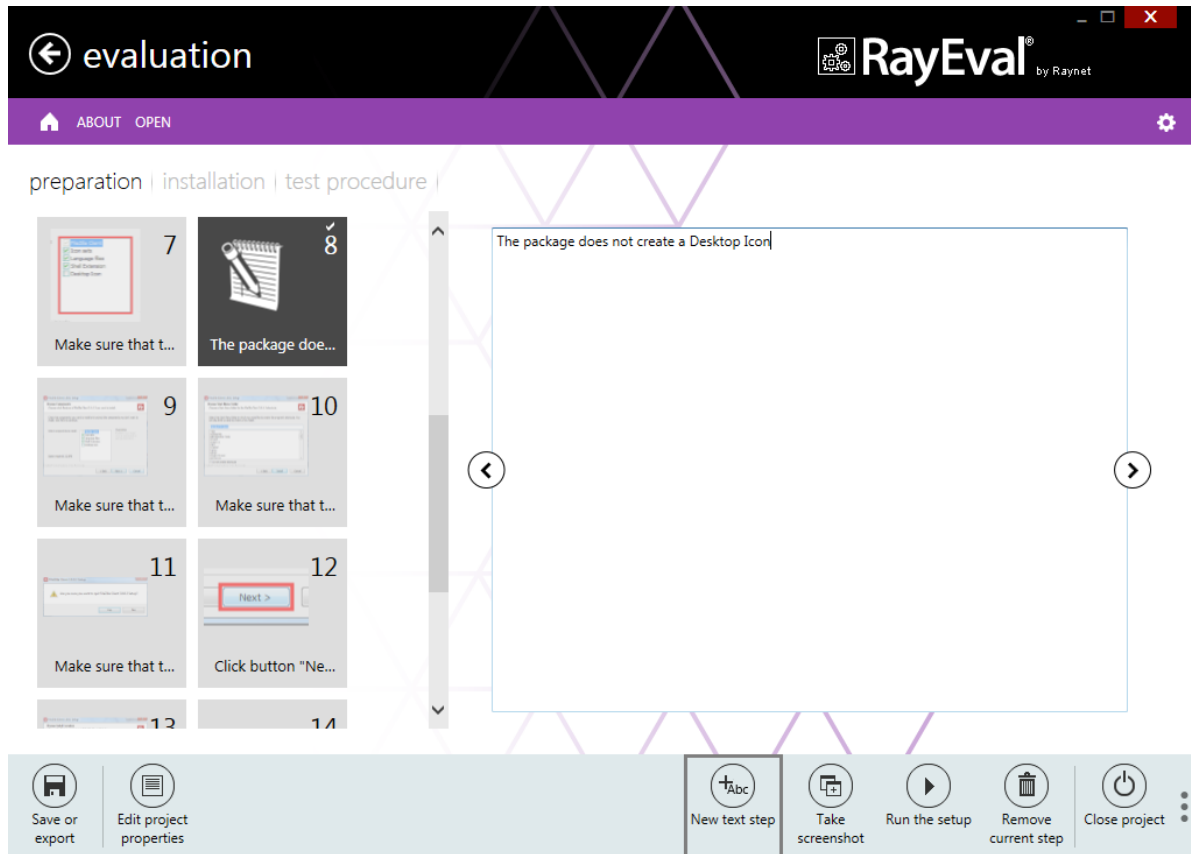
- Clear recent projects: A list of recent projects is available under the “recent” section of “home” snap-in. By using this feature a user can clear this section of the listed recent projects.
- Enable “Run setup” button: Enable or disable the “Run setup” button, available in the Task Bar at the bottom of the “evaluation” snap-in.

• Templates

- Update table of contents during export: Enable or disable updating the table of contents in an evaluation document being exported in Microsoft Word or PDF format.
- Replacement text in case of empty property: Provide an alternative text to be shown in the evaluation document for the properties that have not received a value from the user.

Adding a Text Description as Evaluation Step

A new button called “New text step” has been added to the task bar that is available at the bottom of the “evaluation” snap-in. This button, when clicked upon, adds a new step of the type text to the evaluation project. After the step is added, a user needs to provide a description of the step in the step viewer, which is available on the right-hand side of the evaluation snap-in view.



Enhanced Performance and Visual Appearance

Performance has been improved along with many UI tweaks and enhancements that provide a more interactive and informative experience to the user.

New Template

Sample templates are provided as part of the RayEval binaries. These sample templates are meant to enable users to quickly start using RayEval or provide a reference for creating their own templates. New template documents are provided with this release of RayEval.

Resolved Issues

The following issues from the previous version of RayEval have been resolved in this release:

Issues Resolved in RayEval 2.1

1. "Size of the sources" property within the "project details" displayed incorrect size of the source file.
2. Disabling "Animation" option in the "Settings" snap-in of RayEval caused a critical error, inhibiting RayEval to start.
3. An error occurred while overwriting an existing project via auto-save.
4. When a user tries to close/exit RayEval, while being in between an evaluation project, a message is shown asking whether the user would like to save the changes made to the project. Previously, when a user selected the "SAVE" option, RayEval crashed.
5. On certain environments (Virtual Machines) where RayEval was being used, it was recognized that the captured screenshots were blacked out.
6. When a user chose to remove the source file from the project, the properties that were auto-filled, were not cleared of their entries.
7. The attribute "IsVisibleInUI" had no effect on the item configured for it.
8. Within the projectconfiguration.xml file, if the property description (tag) provided was long then it was cut off in the RayEval view.
9. Exporting an evaluation result as PDF file did not work if the underlying template was based on bookmarks.
10. An evaluation report exported as a Microsoft Word file, displayed a value of type path incorrectly in the screenshot description.
11. RayEval when launched through RayFlow did not auto fill the property "Specify the operating system service pack used during the evaluation", available under the "environment" tab of "project details" snap-in.
12. The table of contents in the exported evaluation result document was not updated and hence showed incorrect details.
13. The RayEval Dashboard and "About" section was out of the view on small resolution. Currently minimum resolution requirements are 700 pixels in height and 900 pixels in width.
14. Opening a project from command line (using /open switch) crashed the RayEval.
15. RayEval was not able to handle different date and time formats (when trying to open a project that has been saved in different language)
16. For some legacy setup files, the auto populated properties in the RayEval contained white characters.
17. Multiline description was not possible for LargeText properties.
18. Performance pertaining to the export of an evaluation project as word or pdf file, required improvement.
19. The property "Installation source type" was not updated when a source file was added to RayEval evaluation project.
20. Changing of the UI language of RayEval, effected configured properties.



Issues Resolved in RayEval 2.1 SP1

- 21. RayEval encountered some problems while being run on Microsoft Windows XP.
- 22. German translation in Configuration view.
- 23. Issue with capturing certain Windows 8 Store Apps.
- 24. Wrong perspective of Desktop Icons.
- 25. Operating system version and name of Microsoft Windows Server 2012 R2 and Windows 8.1 in project details.



System Requirements

Software requirements:

Windows XP SP2 (recommended Windows 7 or 8)

.Net Framework 4.0

Windows Installer 4.5

Supported Operating Systems:

The following operating systems are supported for the installation and running of RayEval.

- Windows 8.1
- Windows 8.1 x64
- Windows 8
- Windows 8 x64
- Windows 7
- Windows 7 x64
- Windows Vista
- Windows Vista x64
- Windows XP Professional SP3
- Windows XP Professional SP3 x64
- Windows 2012 R2 Server
- Windows 2012 Server
- Windows 2008 R2 Server
- Windows 2008 Server SP1-SP2
- Windows 2008 Server x64 SP1-SP2
- Windows 2003 R2 Server
- Windows 2003 R2 Server x64
- Windows 2003 Server SP2
- Windows 2003 Server x64 SP2

Minimum Hardware requirements:

CPU Pentium IV / Core2 processor

2 GB RAM

1 GB free hard disk

Recommended Hardware:

CPU Intel Core i5 or i7

8GB RAM

10 GB free hard disk

Additional Information

Visit www.raynet.de for further information regarding the product and current community incentives.

Raynet is looking forward to receiving your feedback from your RayEval experience. Please contact your Raynet service partner or write an e-mail to sales@raynet.de to add your ideas or requirements to the RayEval development roadmap!



Need Help?

Request RayEval support

Our Raynet support team gladly assists you on any question or issue you encounter regarding RayEval. Feel free to sign in and open incidents via our Raynet support panel, or by simply sending an email to support@raynet.de if you are an already registered Raynet customer.

Contact your Raynet sales representative

Our sales team is the right contact for any license or edition question you might encounter. You would like to benefit from a professional RayEval training? Ask for dates and locations to find the fitting training occasion. You are highly welcome to step in contact via sales@raynet.de.

RayEval is part of the RaySuite

More information online
www.raynet.de

Raynet GmbH

Technologiepark 20
33100 Paderborn
Germany

T +49 5251 54009-0
F +49 5251 54009-29

General information: info@raynet.de
Product support: support@raynet.de