

## ✓ RMS UEM 3.0

### 3.0.2521.731 [Update 1]

Release on Oct 13, 2023

#### Resolved issues

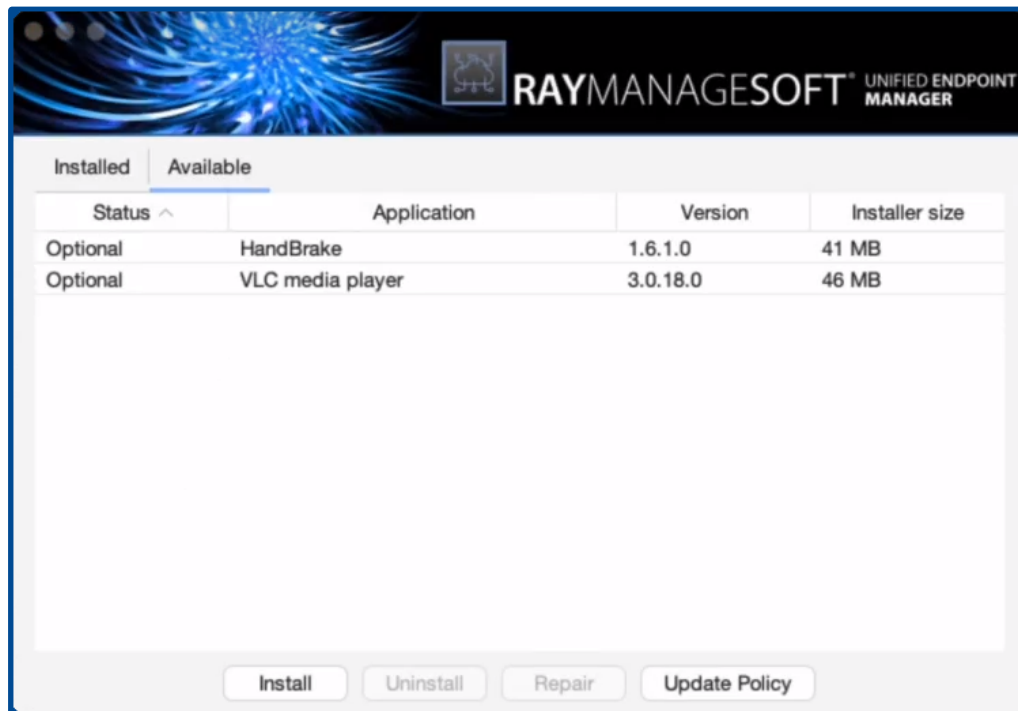
- Resolved role issues on group editing. [RMSC-2114](#)
- Resolved assignment issues on install state when adding or removing child group relations for groups. [RMSC-2233](#)

### 3.0.2516.727 [RTM]

Release on Jun 27, 2023

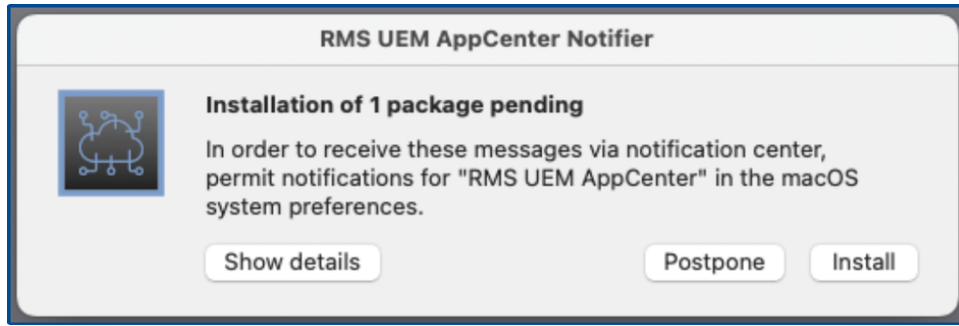
#### AppCenter for Windows and macOS [RMSC-1723](#) [RMSC-1848](#) [RMSC-1753](#) [RMSC-1785](#) [RMSC-1820](#)

The RMS UEM AppCenter for macOS has been implemented in this release. It provides an overview of the installed and available packages. Additionally, the AppCenter contains a simple management, so that the user can repair or uninstall the packages (as long as the policies allow it).



AppCenter running on macOS

Both Windows and macOS have now native support for user interaction for postponement. The administrator can set up packages, so that the actual installation can be pushed, until specific number of times or until a specific date. The user has an easy to understand prompt, which lets him pick up the desired action.

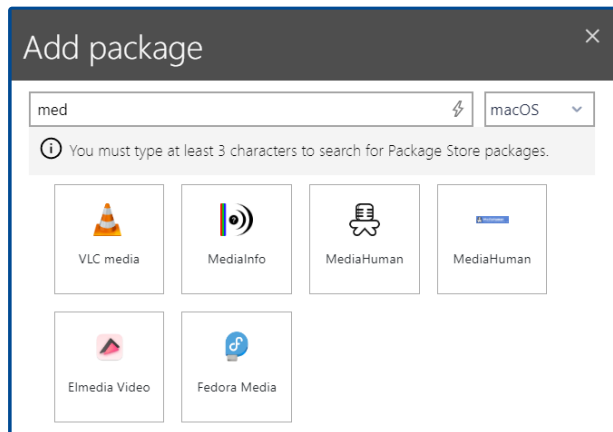


Postponement prompt running on macOS

On Windows, AppCenter replaces the previously available Selector / Deployment Manager.

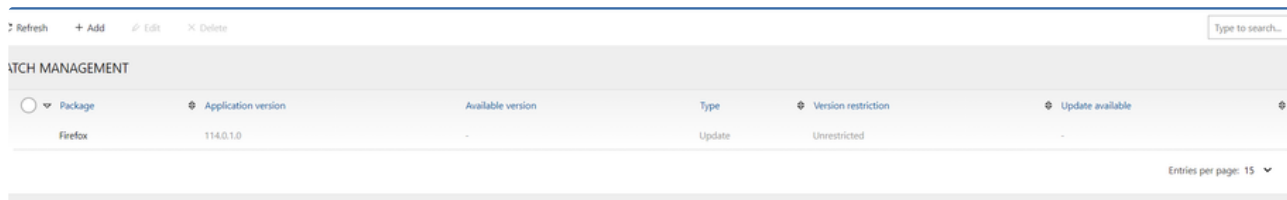
## Automatic Creation of Packages and Patches for macOS RMSC-1726 RMSC-1728

The built-in integration of Package Store has been extended and now supports both Windows and macOS apps. Package Store is a quick way of preparing a ready-to-be-deployed app with common settings. The app is preconfigured and yet still allows flexibility and configuration options both general as well as app-specific.



Package Store package selection for macOS packages

Similarly to the previously available patching ability for Windows patches, patching for macOS applications has been implemented. Package Store packages for macOS can be used as a source for automatic patching.



Patch Management page showing a macOS package

## Applications Can Now Be Displayed in Tree-Like Structures RMSC-1647

The list of applications has now two alternate modes - next to the previously available list mode (flat), the users are now able to create tree structures, with multi-level nesting. This change makes it easier to manage packages, move them between different states / rings / functional folders, and find the required entries without much effort.

Name	Status	Type	Display name	Version	Manufacturer
Windows					
Browser					
Packaging					
RayPack	●	Windows	RayPack	7.2.6639.3437	Raynet GmbH
KeePass 2.x	●	Windows	KeePass (2.x)	2.54.0.0	Dominik Reichl
VirtualBox-x64	●	Windows	VirtualBox for 64-bit	7.0.8.0	Oracle
Adobe Acrobat Reader DC	●	macOS	Adobe Acrobat Reader DC	23.1.20177.0	Adobe
Firefox	●	macOS	Firefox	114.0.1.0	Mozilla

Applications page using the new Tree view

## Tag Groups, Devices and Packages with Target Operating System RMSC-1854

Core elements for organization of policies and assignments (groups, devices and packages) now support an extra property, that defines the desired operating system. This makes it easier to manage platform assignments, when working with hybrid environments, with mixed Windows and macOS devices and apps.

Edit device
✕

DISPLAY NAME \*

OWNER

NOTE

LOCKED

i If a device is locked, it is prohibited from uploading files or obtaining new packages.

OPERATING SYSTEM TYPE

Save changes

Discard

Edit device dialogue

## The Assignment Dialog Has Been Redesigned RMSC-1832 RMSC-513 RMSC-1894

The package assignment dialog has been redesigned. The **General** settings are now more descriptive and frequently used options have been pulled to be displayed earlier.

**Add package assignment**

General Postponement Lifetime

PACKAGE  
RayPack 7.2.6639.3437 (Applications)

FORCE INSTALL

- This application is required**  
Install the application automatically. You can configure [postponement settings](#), to allow the user to defer the installation for a short time.
- This application is required but can be uninstalled**  
Install the application automatically, but allow the user to uninstall it. You can configure [postponement settings](#), to allow the user to defer the installation for a short time.
- This application is optional**  
Allow the user to choose whether or not to install the application from a catalog of available applications.

OUT-OF-POLICY BEHAVIOR  
What should happen if the assignment of this application is removed?

- The application should stay on the device**  
The application and its data will stay, and it will be fully functional even if the application is no longer assigned to the device.
- The application should be removed from the device**  
The application will be automatically removed by the next policy update. Application data and content will not be removed.

Add Discard

Package Assignment dialogue - General tab

In the new **Postponement** tab it is possible to configure specific settings that will affect whether and for how long the end user is allowed to postpone the installation of an app.

**Add package assignment**

General Postponement Lifetime

POSTPONEMENT OF ASSIGNMENT

**Postpone by days** 5

The installation can be postponed for 5 days. (Starting from the day they are available on the managed device)

**Postpone by date** 06/21/2023 01:00 PM

Local Time  UTC Time

The installation can be postponed until **2023-06-21 13:00 UTC Time**

Add Discard

Package Assignment dialogue - Postponement tab

In the new **Lifetime** tab it is possible to configure a specific timeframe in which the assignment is valid. This enables the setup of assignments for apps to groups or devices, that should only be used from and/or until a specific date.

Add package assignment
✕

General
Postponement
Lifetime

LIFETIME OF ASSIGNMENT

Always active

Effective from

06/20/2023 01:39 PM

Local Time
  UTC Time

Effective range

06/24/2023 01:00 PM

-

06/30/2023 01:00 PM

Local Time
  UTC Time

This application will be available on the managed device starting from **2023-06-24 13:00** until **2023-06-30 13:00 Local Time**

Add

Discard

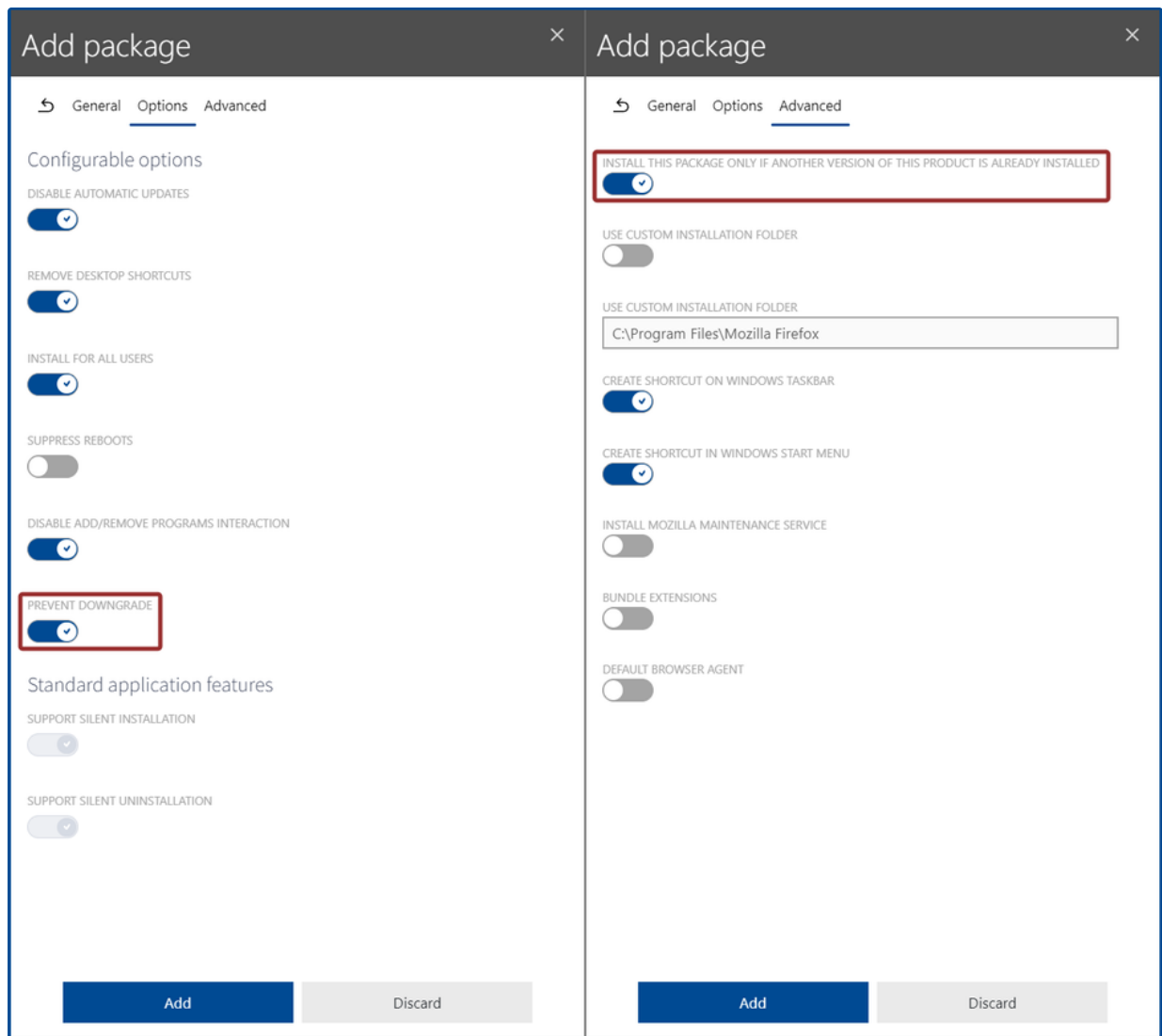
Package Assignment dialogue - Lifetime tab

## Two New Options for Package Store Packages Are Available RMSC-1727

It is now possible to enable the patching of applications using Package Store packages using two new options that have been introduced with this release:

- **Prevent downgrade:** ensures that the installation on the target device will be prevented if a higher version of the application is already installed on the target device.
- **Install this package only if another version of this product is already installed:** ensures that the installation on the target device will be prevented if no previous version of the applications is installed.

These two options can be used in combination to use UEM and Package Store functions as a patching mechanism even if the original deployments are handled by an external system (for example Microsoft Intune).



Options dialogue and **Advanced** dialogue with the new options

## Other improvements/changes

- Improved performance of data normalization and enrichment (RayVentory Catalog). [RMSC-1517](#)
- When a new inventory is received, the reconciliation engine ensures it is rejected if a newer version of the inventory is already available. [RMSC-1838](#)
- When downloading the macOS agent if the backend is configured with HTTPS, the certificate gets downloaded automatically and integrated into the installation sources. During the installation of the agent, the certificate will get installed to the internal store. [RMSC-1786](#)  
[RMSC-1788](#)
- It is now possible to view packaging options for imported Package Store packages. Previously, these settings were only visible when creating the package. [RMSC-1920](#)
- A new scheduling event option "don't rerun option" has been implemented. This option enables for the event to be configured to delay the next run for a certain amount of time once it was successfully executed. This way a short repeat time in combination with a high delay for the next run can be configured to make sure that clients with a short on-time are covered. [RMSC-1812](#)
- The device information has been extended by the serial number. It is gathered during the inventory import. [RMSC-1714](#)
- New functions have been added to the automation tool.
  - It is now possible to automatically remove a device or package assignment from a group. [RMSC-1703](#)
  - It is now possible to automatically delete a device or group. [RMSC-1890](#)

- A Folder and upload file support has been added for macOS packages which is similar to the folder and upload file supported for windows packages. [RMSC-1796](#)
- The logging on macOS agent components has been improved. [RMSC-1690](#) [RMSC-1836](#)
- It is now possible to simultaneously assign multiple devices to a single group. [RMSC-1289](#)
- The install state indicator has been improved. In case of overlapping assignments, depending on priority and lifetime specification, the most highly prioritized assignment is identified and used to determine the deployment state value. [RMSC-1356](#) [RMSC-1877](#) [RMSC-1846](#)  
[RMSC-1813](#)
- It is now possible to filter the raw data in the device details view of a macOS device to only display the data within `/Applications`.  
[RMSC-1841](#)
- The RMS UEM AppCenter documentation for the Windows and the macOS agent has been improved. The documentation can be accessed from within the RMS UEM AppCenter to gain general knowledge about the RMS UEM AppCenter and the functionalities it offers. [RMSC-1917](#) [RMSC-1911](#)

## Resolved Issues


- Fixed an issue where the version of the agent was not correctly identified during the inventory import from a macOS device. [RMSC-1718](#)
- Fixed an issue where the operating system for macOS devices was not displayed correctly. [RMSC-1840](#)
- Fixed various minor text and localization issues on tooltips, warnings, and error messages. [RMSC-1918](#)
- Fixed an issue where Package Store packages were incorrectly uploaded to the Azure Storage. [RMSC-1967](#)
- Fixed an issue where some files could be missing when creating third party installer (.exe) packages. [RMSC-1973](#) [RMSC-1980](#)
- Fixed the uninstallation and installation operation order in "Apply Policy" on the macOS agent. [RMSC-1986](#)
- Certain application installations on the macOS failed due to missing permissions. For these the installation can now be performed using the `osascript` installation of the package with the default string. [RMSC-1975](#)

## Known Issues

- **Packaging of a package sometimes fails due to a MinIO connection issue**  
Sometimes, due to connection problems a change could not be uploaded to MinIO and therefore the packaging will fail. If this is the case, redo the change. In most cases, the next upload will work directly. [RMSC-1098](#)
- **Duplicated device settings and schedules**  
When changing the defaults in the tenant settings, device settings and schedules will be duplicated. The duplicates need to be removed manually. [RMSC-1246](#)
- **No feedback when tabs contain validation errors that prevent saving**  
When editing a package and inserting invalid information into a field that will be validated, there is no information that there are errors in the tab. Clicking on the **Save** button will result in no reaction. [RMSC-1344](#)
- **Error message for circular dependencies is missing**  
When creating a circular dependency between packages by adding a dependency, only a generic error is given. It does not provide proper information towards the problem. [RMSC-1351](#)
- **Drag&Drop issue in applications tree view**  
When dropping an item between two packages, the item gets moved to the root folder. Dropping needs to be restricted to folder items only. [RMSC-1898](#)
- **Adding unmanaged dependency for package**  
When adding an unmanaged dependency for a package an error that the given product code is not correctly read when supplying a reference package might occur. [RMSC-1987](#)
- **macOS AppCenter auto-refresh**  
The installation and uninstallation of available packages that have been started by the user are also not refreshed automatically. The list only gets updated after switching between the tabs. [RMSC-1994](#)

## Migration

The database migration is handled automatically during the initial launch.

 Be aware: RayManageSoft UEM 3.0 will not install properly, when upgrading from a previous version of the product and if there is any null value in its Prerequisite table, column Match. [RMSC-2014](#)

In order to mitigate this condition, we recommend to execute the following query on your RMS UEM database, before migrating to the version 3.0:

```
Update [Prerequisite]
Set [Match] = 0
Where [Match] IS NULL
```