

✓ RayEval 7.3

7.3.2309.2383 [Update 1]

Released on Aug 24, 2023

New features

- PackBench now uses Windows Credentials Store for RayFlow connectivity, and is able to reuse login session from other RayPack Studio products. [RF-4879](#) [RF-4883](#) [RF-4607](#) [ZEN-17962](#) [ZEN-19506](#) [ZEN-20902](#)

Improvements

- It is now possible to use floating license with MSIX-based deployment of RayEval. [RPK-4693](#)

Fixes

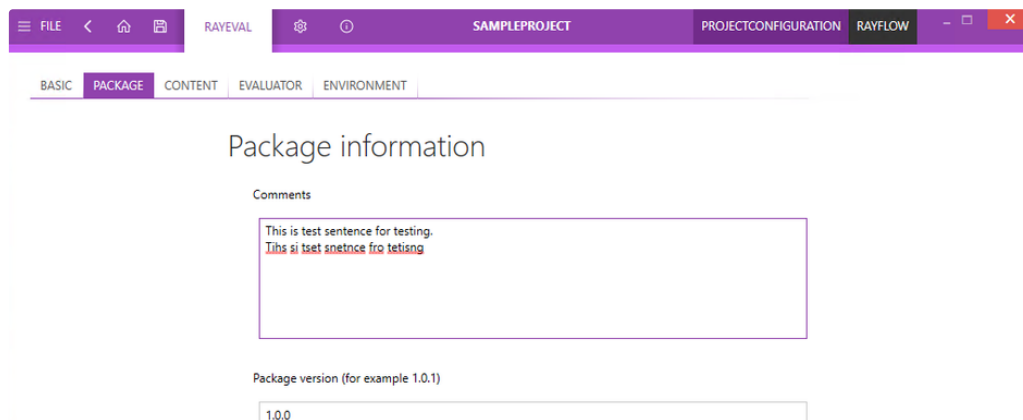
- Fixed various issues with localized texts. [RPK-4786](#) [RVL-700](#)
- Fixed an issue, where where an inaccurate error message was displayed when a template was lacking a column in a steps table. [RVL-615](#)
- Fixed an issue where `ApplicationData` failed to update as expected. [RVL-702](#)
- Fixed an error that occurred during the export of a project as a PDF file. [RVL-704](#) [ZEN-21258](#)
- Fixed an issue with cloning of the default configuration. [RVL-705](#) [ZEN-21525](#)
- Fixed an issue, where Windows 11 could be recognized as Windows 10. [RVL-713](#)
- Fixed an issue, where system snapshots could not be created due to a missing file. [RVL-716](#)

7.3.2292.2380 [RTM]

Released on Dec 2, 2022

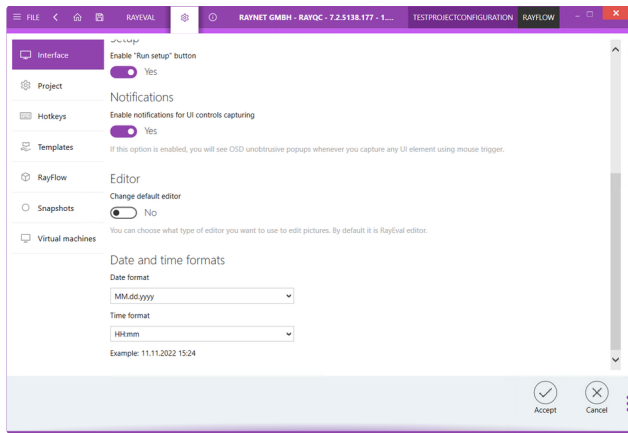
Spell-Checking for Step Descriptions [RVL-128](#)

When editing the description of a step, the text is automatically checked against spell-checks and offers auto-suggestions (availability of the support of a language depends on the Windows settings). This way it is easy to eliminate spelling errors and grammar mistakes without additional proof-reading.

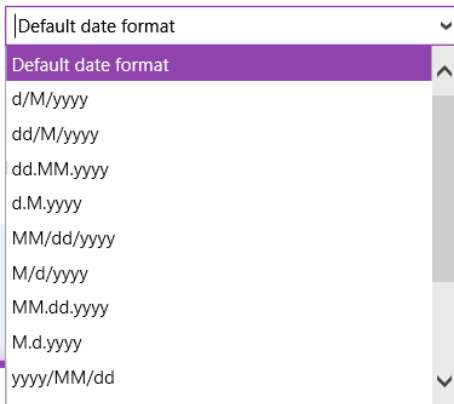


Configurable Regional Settings for Date Formats [RVL-378](#)

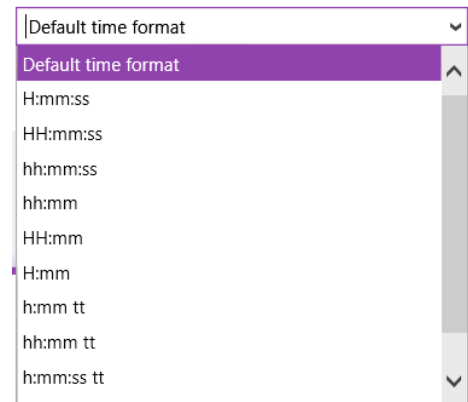
Date format is now configurable in the program settings. RayEval now offers multiple different ways the dates are presented.



Date format



Time format



Other Improvements

- Improved scrolling when dragging steps. [RVL-584](#)
- Improved the handling of the clipboard. [RVL-362](#)

Resolved Issues

- Improved the German localization. [RVL-131](#)