

RayVentory Scan Engine 12.5

12.5.3583.76 [Update 3]

Released on 25 Apr 2023

Security Improvements

- The bundled component `curl` for Windows was updated to version `8.0.1`. This update ensures that the RayVentory Agent performs optimally and is compatible with the latest features and security enhancements. [RVP-2039](#) [ZEN-23032](#)

Resolved Issues

- Fixed an issue with basic authentication of NDI uploads to RayVentory Scan Engine HTTP server. [RVP-2034](#) [ZEN-21146](#)
- Fixed an issue where the remote inventory on AIX was causing the inventory scan to fail in some cases. [RVP-2078](#) [ZEN-22942](#)
[ZEN-22705](#)

12.5.3581.73 [Update 2]

Released on 12 Apr 2023

Improvements

- The `libcurl.dll` library is now signed with the Raynet certificate, adding an extra layer of security for our users. [RVP-2073](#)
- We've made significant improvements to the device updating process, particularly when scanning multiple devices with large databases simultaneously. This ensures data consistency and offers a better user experience. [RVP-2065](#)
- RayVentory agent now supports time zones for schedule calculations, enabling more accurate and convenient scheduling options for users. [RVP-2052](#)

12.5.3579.69 [Update 1]

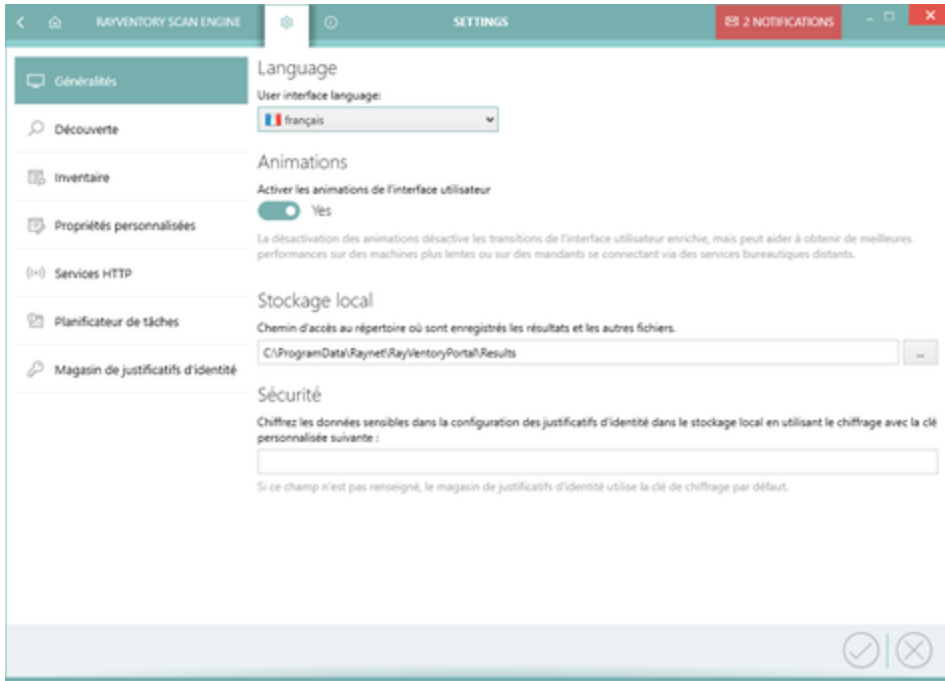
Released on 22 Feb 2023

Resolved Issues

- Fixed issues with discovery and inventory based on LDAP import. [RVP-1892](#)
- Fixed SSL/TLS connection issue on activation of license. [RVP-2058](#)

Preview features

- In this build, we added a preview of French UI translation. [RVP-2031](#)



12.5.3571.67 [RTM]

Released on 29 Dec 2022

Inventory Agent Now Supports ARM64 Processors [RVP-1179](#) [RVP-2004](#) [RVP-2009](#)

ARM64 processors are now supported by the RayVentry Inventory Agent. For a detailed list of the supported operating systems refer to the *Software Requirements* chapter in the *Release Notes* document or to the *Supported OS for the Different Inventory Methods* chapter in the *User Guide*.

New Scheduler That Removes the Dependency on Cron [RVP-1797](#)

The RayVentry Inventory Agent now features its own scheduler (`raysched`) that can be activated during the installation on the target. When installed, using the new scheduler will completely remove the dependency on `cron`, working in a similar pattern and using the same syntax.

Other Features and Improvements

- **INVENTORY AGENT** A fallback method which is used if `netstat` is not available to directly retrieve the default gateway information for each known and used network adapter has been implemented. [RVP-1823](#)
- The `Win32_Process` class and multiple default properties have been added to the default `wmitrack.ini`. [RVP-2017](#) [RVP-2018](#) [ZEN-20886](#)
- Improved performance of non-Windows zero touch scans, achieved by optimized behavior of process scanning. [RVP-1880](#) [ZEN-19634](#)
- The logging for the RIW file scan when configured in the custom configuration file has been improved. [RVP-1991](#) [ZEN-20399](#)
- New functionality that removes old inventory files associated to a device once a new inventory comes via any inventory method has been implemented. [RVP-2020](#) [ZEN-20898](#)
- It is now possible to get database names and table names for Microsoft SQL databases. [RVP-2033](#) [ZEN-19195](#)

Security Improvements

- In this build, all OSS libraries which were previously not signed are now digitally signed. [RR-3257](#) [RR-3448](#) [ZEN-19870](#)
- Fixed a security issue "Unquoted Service Path Enumeration", where the path to the HTTP upload service executable was saved without enclosing it in quotes. [RVP-1980](#)

Resolved Issues

- **INVENTORY AGENT** Fixed an issue during the parsing of custom scripts in combination with arrays. [RVP-1959](#) [ZEN-19986](#)
- Fixed an issue with CyberArk Vault Authentication being cut off. [RVP-1668](#)
- Fixed an issue where it was possible to save Windows and Oracle credentials without a password. [RVP-1693](#)
- Fixed an issue with a missing folder for non-Windows scans. [RVP-1747](#)
- Fixed an issue where not all discovered devices were inventoried during the discovery task. [RVP-1892](#) [ZEN-20181](#) [ZEN-20959](#)
[ZEN-21072](#)
- Added missing translations in the *Discovery* wizard. [RVP-1908](#)
- Fixed an issue with the service discovery being enabled in the context menu while no device was selected. [RVP-1971](#)
- Fixed an issue where the import of `tnsnames.ora` would not work and the instances would not be added if `DESCRIPTION` properties were listed in a `DESCRIPTION_LIST` property. [RVP-1990](#) [ZEN-20470](#)
- Fixed an issue where two or more scheduled tasks running in parallel overwrote each others `taskrunner.log` file. [RVP-1992](#)
[ZEN-20498](#)
- Improved handling of Windows Zero-Touch Docker inventories. [RVP-1994](#) [ZEN-20398](#)
- Fixed an issue where the *Don't scan devices which upload inventory files via http* checkbox did not work as expected for some filters.
[RVP-2000](#)
- Fixed concurrency issues and possible race-condition when starting more than one inventory job. [RVP-2005](#) [ZEN-20787](#) [ZEN-20940](#)
- Fixed an issue where, when using the *AD users and Groups* import with custom attributes, the attributes were not written to the database correctly. [RVP-2025](#) [ZEN-20657](#)
- **INVENTORY AGENT** Fixed a minor issue where the tracker was still shown with the wrong version number after the update. [RVP-2026](#)
[ZEN-21071](#)