

RayPack 7.3

7.3.6797.3446 [Update 1]

Released on 27 Feb 2023

Improvements and new features

- **PACKDESIGNER** Improved performance of file deletion. **RPK-4753**
- **PACKRECORDER** Added a new checkbox to control whether the empty registry keys should be excluded from the conversion from RCP formats. **RPK-4720**
- More robust and secure way of saving RayFlow credentials and sharing the session between other RayPack Studio components. **RF-4879**

Resolved issues

- **EASY PACK** Fixed an issue, where Easy Pack could show a warning when creating a new blank MST project. **RPK-4711**
- **MSIX** Fixed an issue, where adding PSF fixup would not bootstrap the correct launcher. **RPK-4708**
- **PACKWRAPPER** Fixed various issues when switching between visual and advanced view. **RPK-4696**
- **PACKLAYERING** Fixed random issues with VHD handling when building Citrix AppLayering projects. **RPK-4747** **RPK-4684**
- **PACKDESIGNER** Fixed an issue with setting of SIS languages, where a neutral language was always added next to the desired language code. **RPK-4743**
- **PACKDESIGNER** Fixed an issue, where an error would be shown when trying to export ICE validation results to PDF. **RPK-4744**
- **MACOS** Fixed an issue, where `.rpx` files could not be built after adding a new resource. **RPK-4700**

7.3.6780.3445 [RTM]

Released on 02 Dec 2022

Easy Package Creation with Easy Pack **RPK-4607** **RPK-4610**

EasyPack is a new, interactive way of creating projects and setups with RayPack. It integrates most basic and advanced options in different packaging projects, providing a smooth and consistent experience. The goal of this new UI is to expose the most important information about the selected setup, present available paths and features, collect the necessary feedback in project-specific steps, and finally to create a new project. The following scenarios are covered by EasyPack:

EasyPack

SELECT WHAT YOU WANT TO DO:

The screenshot shows a selection screen with three options, each in a rounded rectangular box with a right-pointing chevron:


- I have a setup**
I want to convert or modify package
- I have loose sources**
I want to create new package
- I do not have sources**
I want to find product in PackageStore

- Local repackaging
- Repackaging on a virtual machine
- Creating a blank project (MSI/MSIX)

- Creating a modification package (MSIX) or blank Windows Installer transform (MST)
- Creating packages with Package Store


EasyPack


SELECT PACKAGE:


 **Selected package** Change ^
C:\Program Files (x86)\RayPack\RayPack.exe

Product name:	RayPack
Manufacturer:	Raynet GmbH
Product version:	7.2.6754.3834-493889788
Type:	Legacy

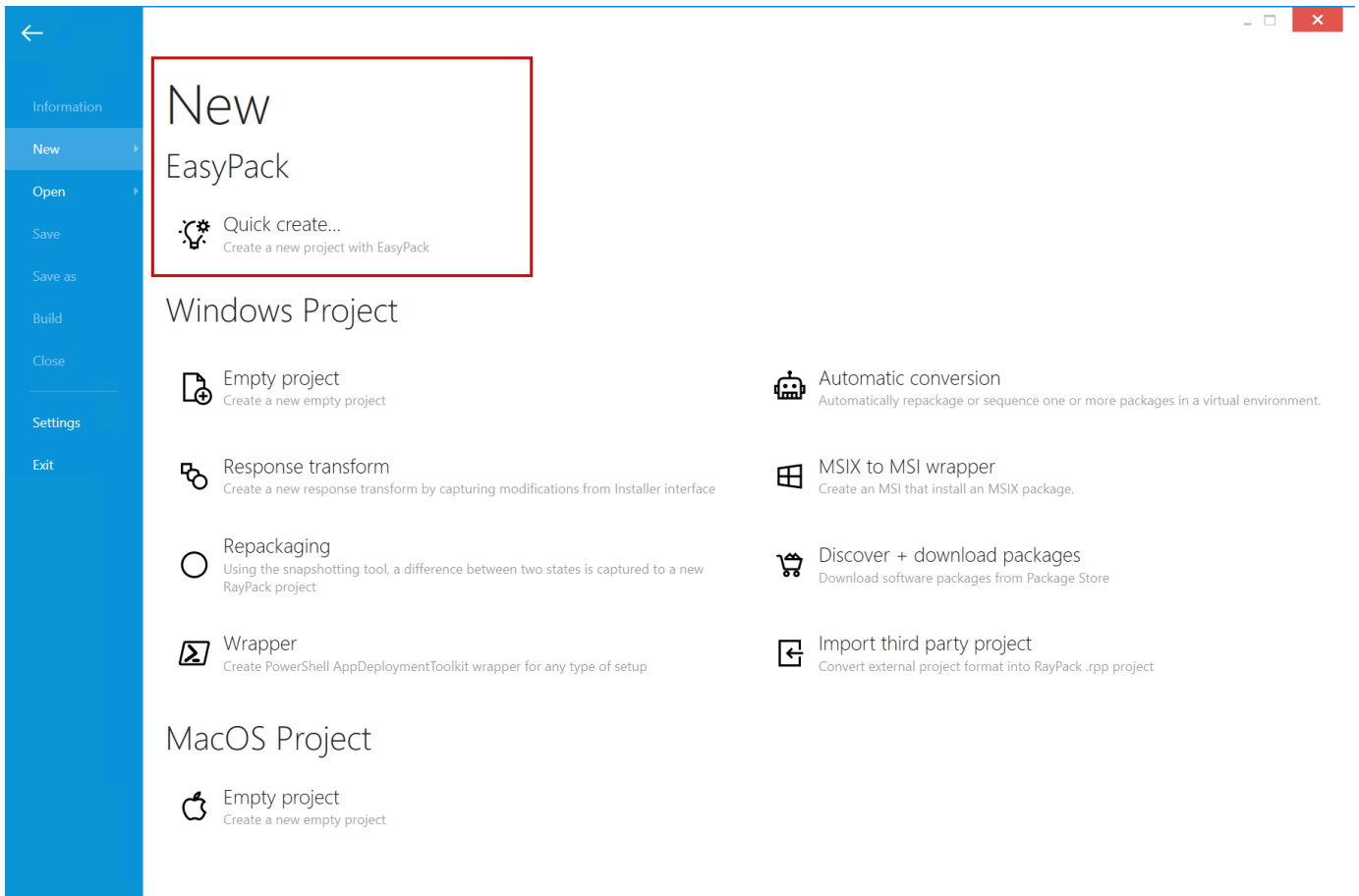
AVAILABLE OPTIONS:

 **Repackage package** This machine v >
Use selected machine to repackage machine

 **Wrap package** >
Use PSAppDeployToolkit to wrap this package

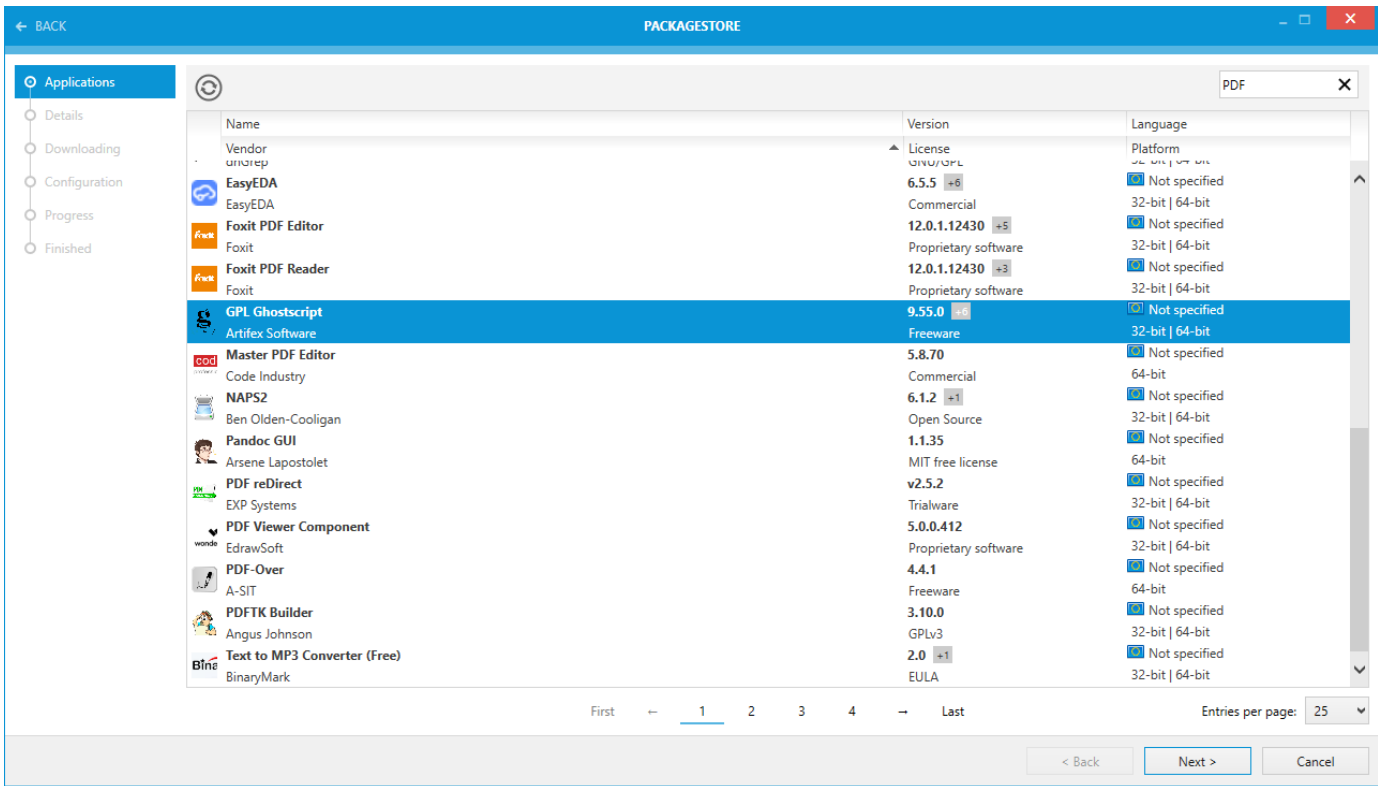
 **Create Intune package** >
Prepare package to deployment

This new wizard can be used side-by-side of the already existing functionality. Also in this version, we reorganized the groups of projects in the New project menu to be better accessible and functionally related.



Package Store integration with 10K+ packages [RPK-4538](#) [RPK-4675](#)

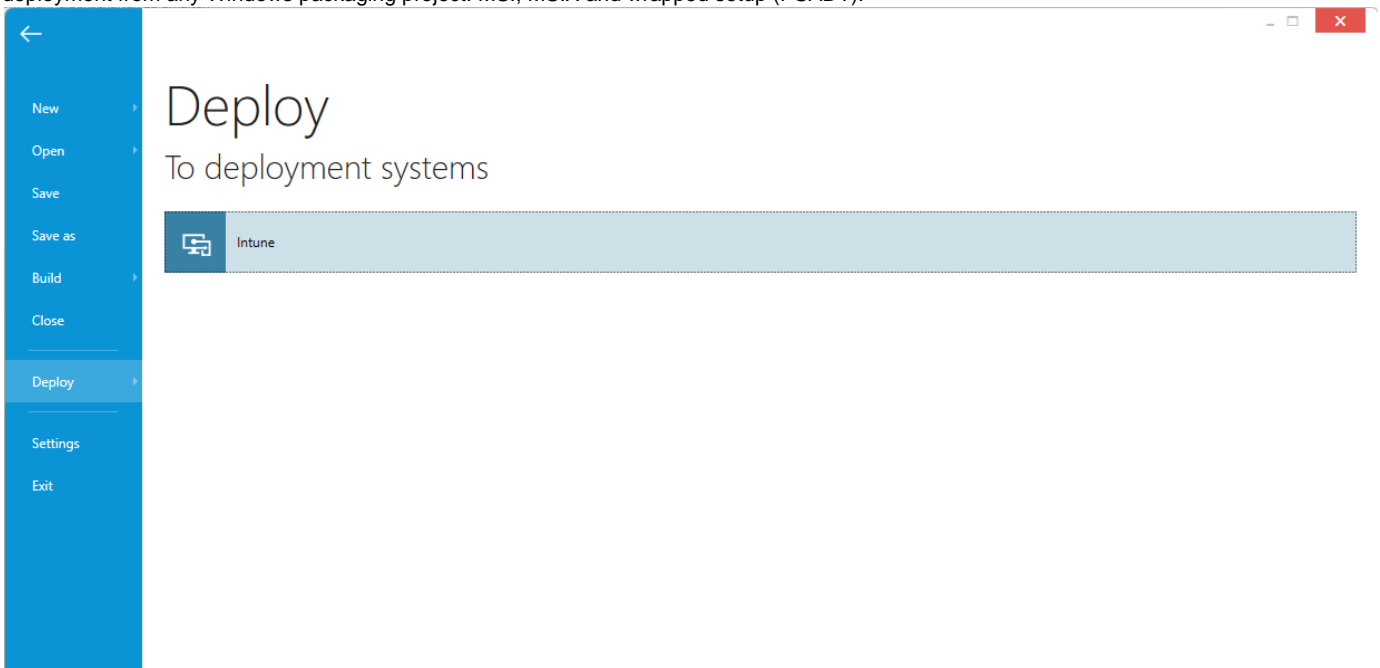
Relaunched Package Store platform offers several thousands of apps in 20K different versions, most of them with further configuration options. Package Store has a simple interface, which guides through the complete process, from automatic downloading of sources, through the configuration, to the package generation. The packages are deployment-ready and can be deployed to popular deployment systems, like Intune, SCCM or RMS UEM.



Once the automatic packaging is finished, the user still has the ability to continue editing the project using the Visual Designer component for PSADT projects.

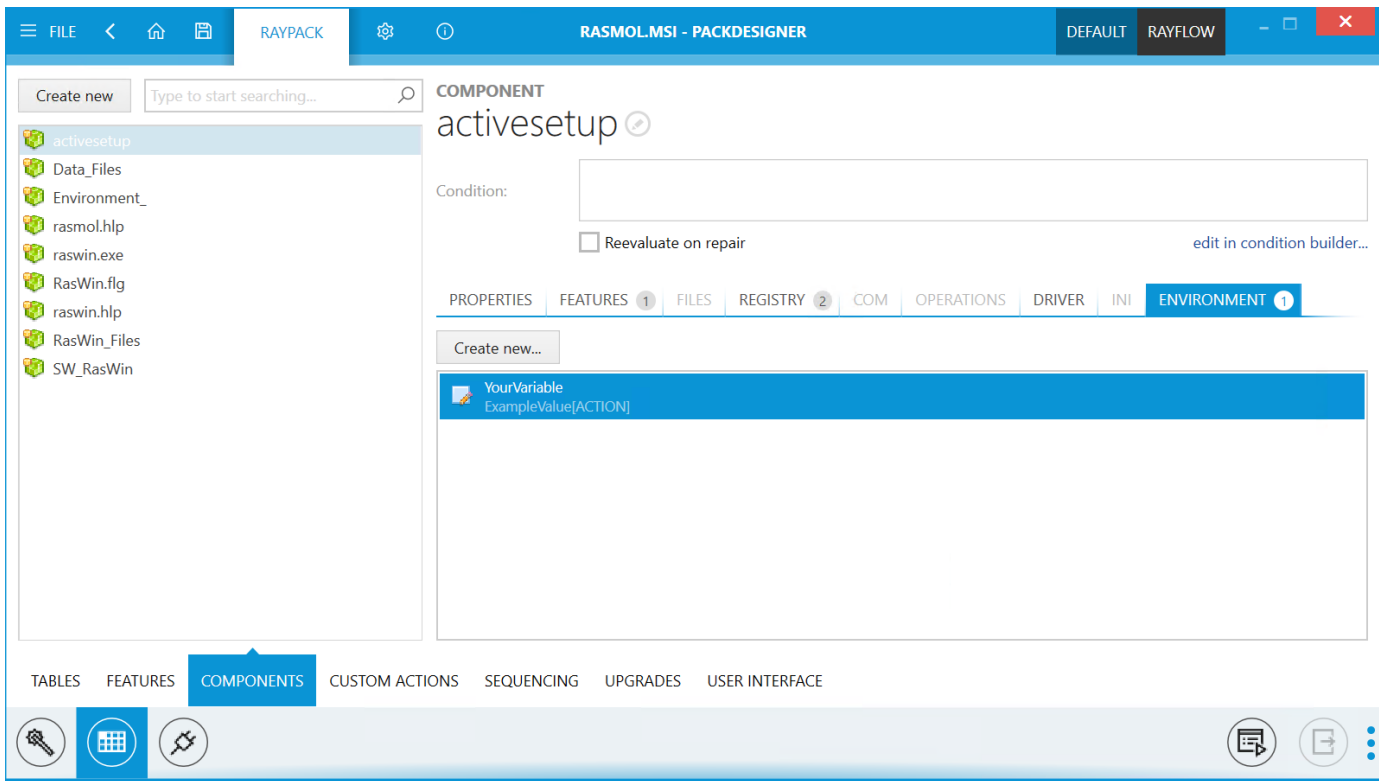
Direct Deployment from PSADT and MSIX Projects to Intune [RPK-3994](#) [RPK-4521](#) [RPK-4518](#)

A new option for direct deployment has been added to our PSADT and MSIX project editors. This feature means, it is now possible to deployment from any Windows packaging project: MSI, MSIX and wrapped setup (PSADT).



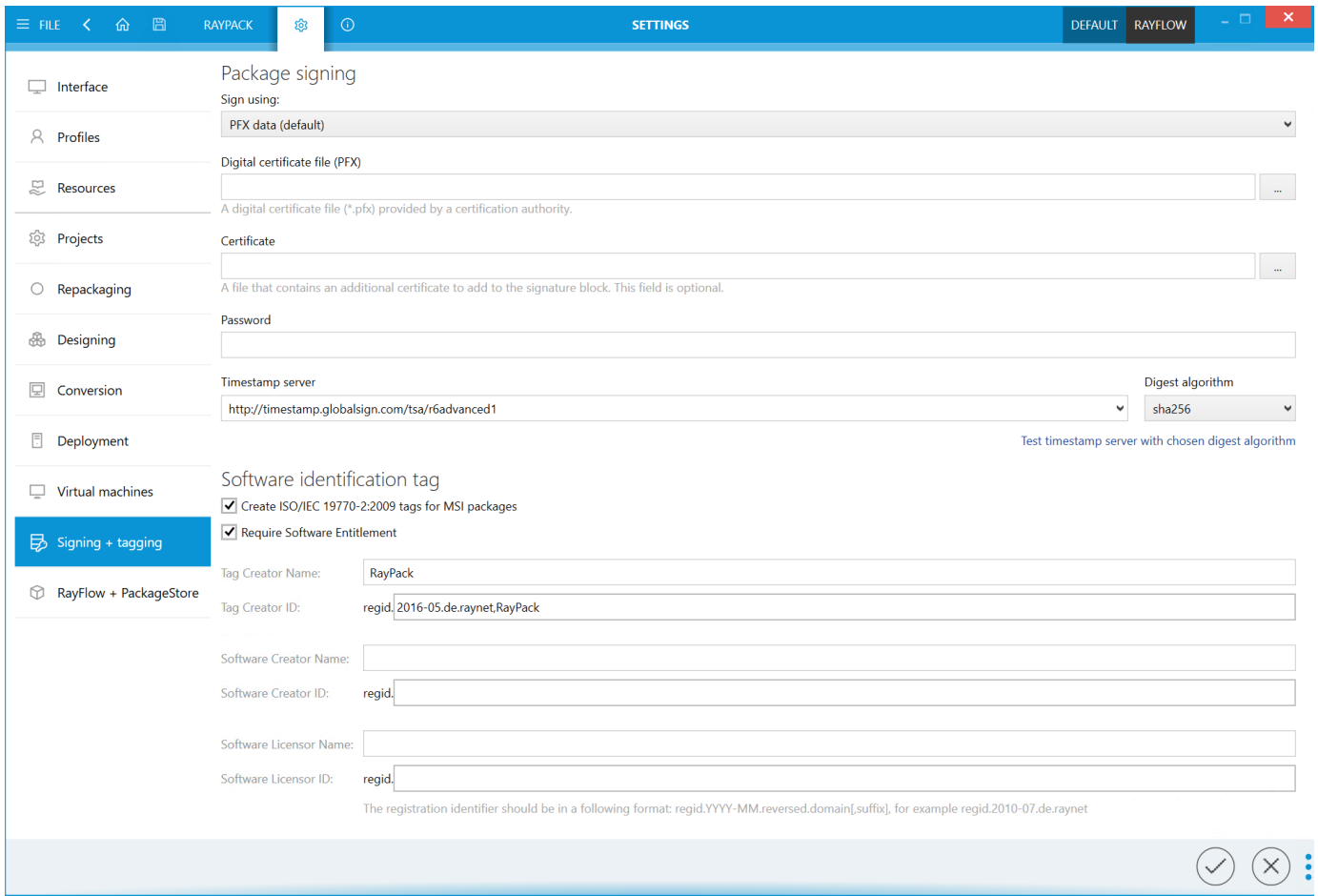
Editing of MSI Environment Variables from the Component View [RPK-4558](#)

In PackDesigner, we added a new tab in the Component view. This context-aware view shows the list of environment variables assigned to a selected component and provides an easy way of adding a new content that should go to a specific component.



Advanced Options for Signing and Timestamping **RPK-4609**

Based on popular feedback, we improved the signing dialog by adding a list of predefined public timestamp server, available for free. To support custom scenarios, the user can now also specify the digest algorithm used for timestamping. Finally, to make sure the configuration is accepted for MSIX packaging, a new button to test the settings is available. This means that signing issues related to timestamping can now be identified very early on, directly during the initial setup.



Ability to Edit Files and Scripts Directly from MSIX Project Editor **RPK-4646**

Editing files or scripts from any MSIX-based project has never been easier. In this version, there is an extra context-menu option to open any file in an editor of choice. RayPack does the heavy lifting and ensures the new content overwrites the existing one without time-consuming manual decompression and compression of resources.

RAYPACK RASMOL.RPPX - PACKDESIGNER DEFAULT RAYFLOW

Type to start searching... Add or import... Type to start searching...

General

- General
 - Your project
 - Properties
 - Capabilities
 - Dependencies
 - Build options
- Content
 - Files and Folders
 - Registry
 - Applications
 - Startup tasks
 - Services
 - Fonts
- PSF
 - Fixups
 - Scripts
- Advanced
 - File extensions
 - Context menu
 - Firewall rules
 - COM
 - Desktop app

Start script Detection.ps1 RasWin

Script to execute: Detection.ps1

Arguments:

General

- Run script only once per user
- Show PowerShell window
- Exit the application if the starting script fails
- Wait for the starting script to finish

Script time-out:

- No time-out
- Stop the script if running more than: 5000 ms

Script content: Edit script...

```

1 [String]$Version = 'Version'
2 [Version]$ExpVersion = '<product_version>'
3
4 [String]$LastStatus = 'LastStatus'
5 [String]$ExpLastStatus = 'Install'
6
7 [String]$PackageID = 'PackageID'
8 [String]$ExpPackageID = '<application_id>'
9
10 [String]$Revision = 'Revision'
11 [String]$ExpRevision = '01'
12
13 $Counter = 'notdetected'
14

```

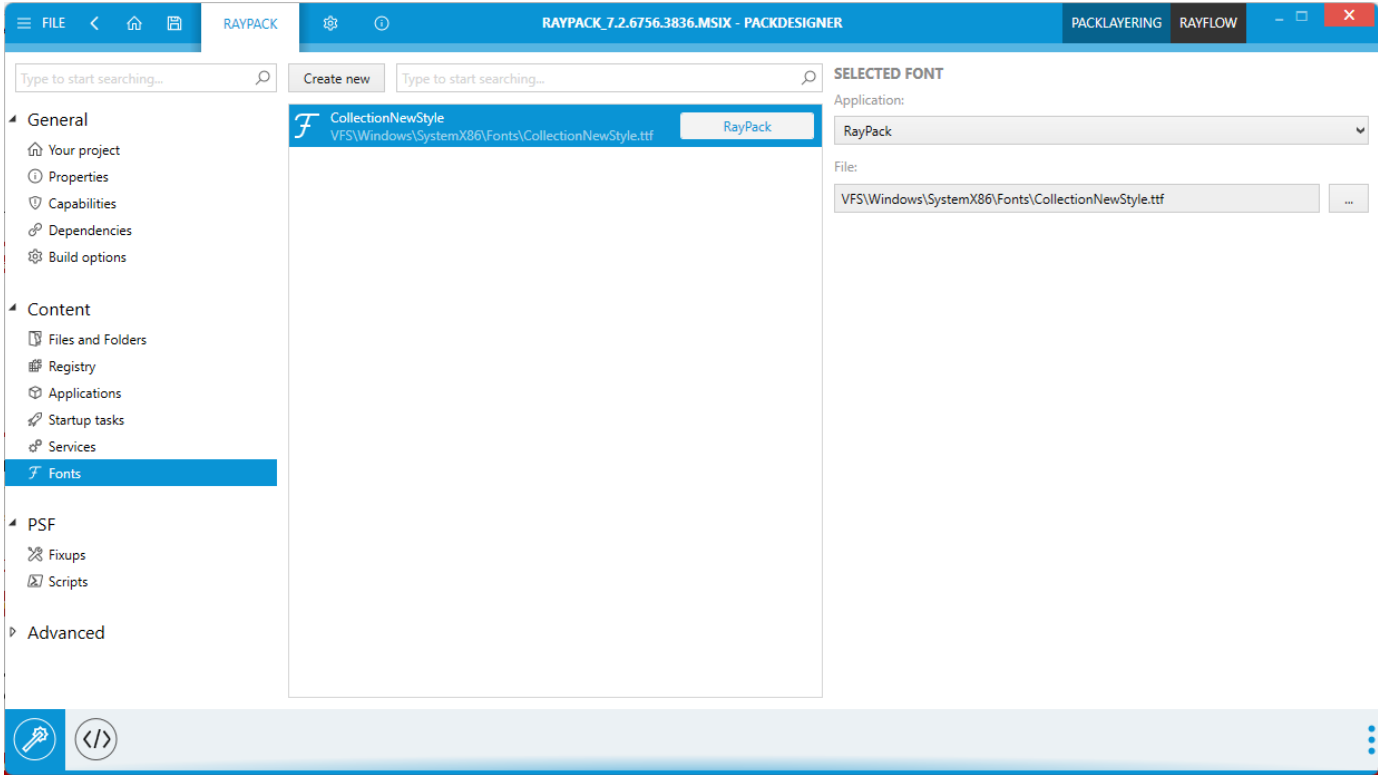
Name	Size
config.json	1149 B
Detection.ps1	1781 B
FileRec	260 KB
FileRec	317 KB

- Import file(s)... Ins
- Delete Del
- Rename F2
- Properties Alt+Enter
- Edit with...

HIDE BASE ITEMS NOT BELONGING TO MODIFICATION PACKAGE

Based on popular demand, we implemented several new MSIX features, which can be now managed and edited using the visual designer:

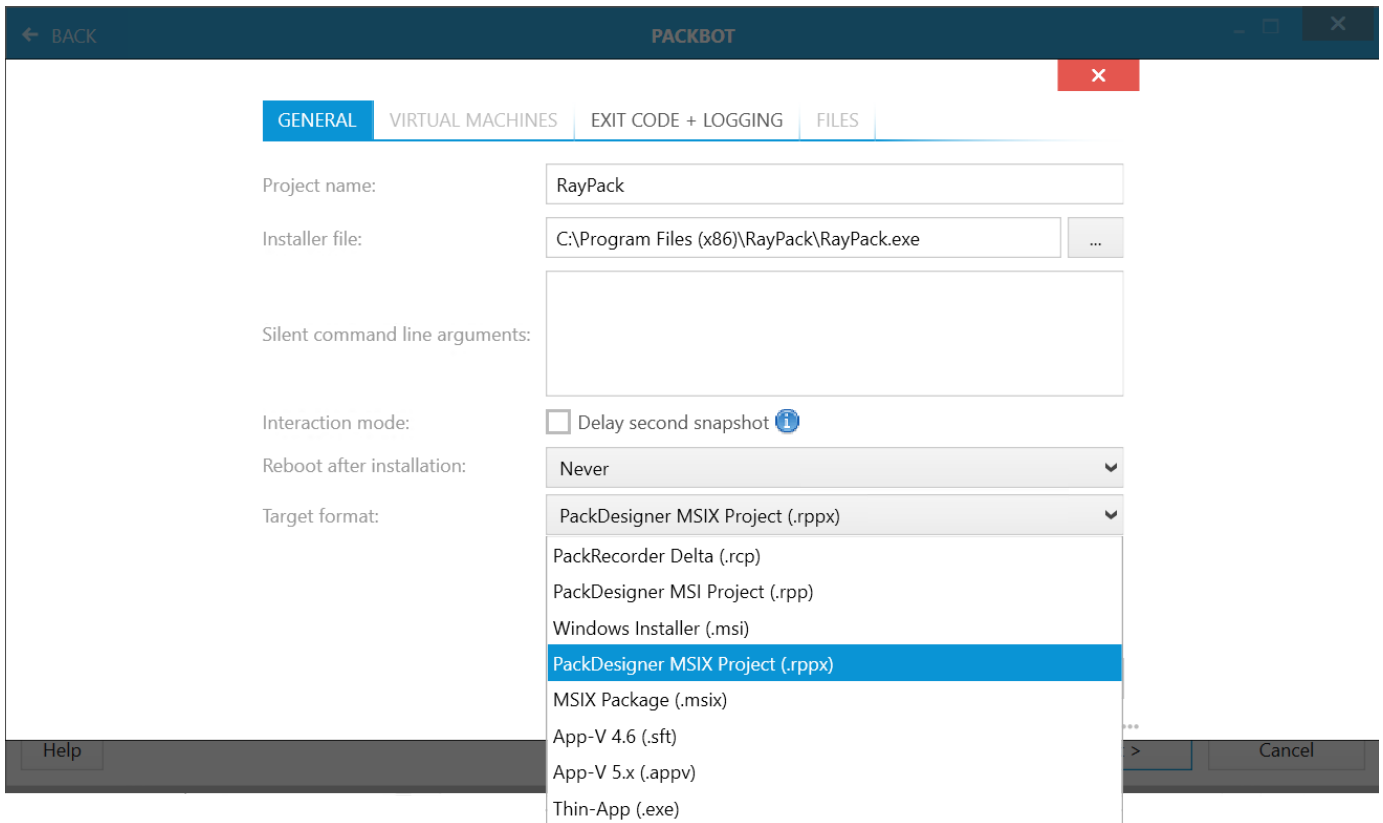
- With the new **Fonts** page it is possible to register fonts.
- With the new **Desktop app** page it is possible to define in-depth behavior for apps that blend MSIX and classic deployment.
- The **Dependencies** page now supports driver dependencies and host runtime dependencies
- The **Properties** page now exposes options for multi-user awareness and file/registry write virtualization.
- The **Applications** page has now several extra options to set the runtime behavior, trust level and other in-depth settings for MSIX deployment.



Additionally, the structure of options in the main menu has been reorganized. Similar options are now grouped, and less-frequently used were moved to the Advanced group.

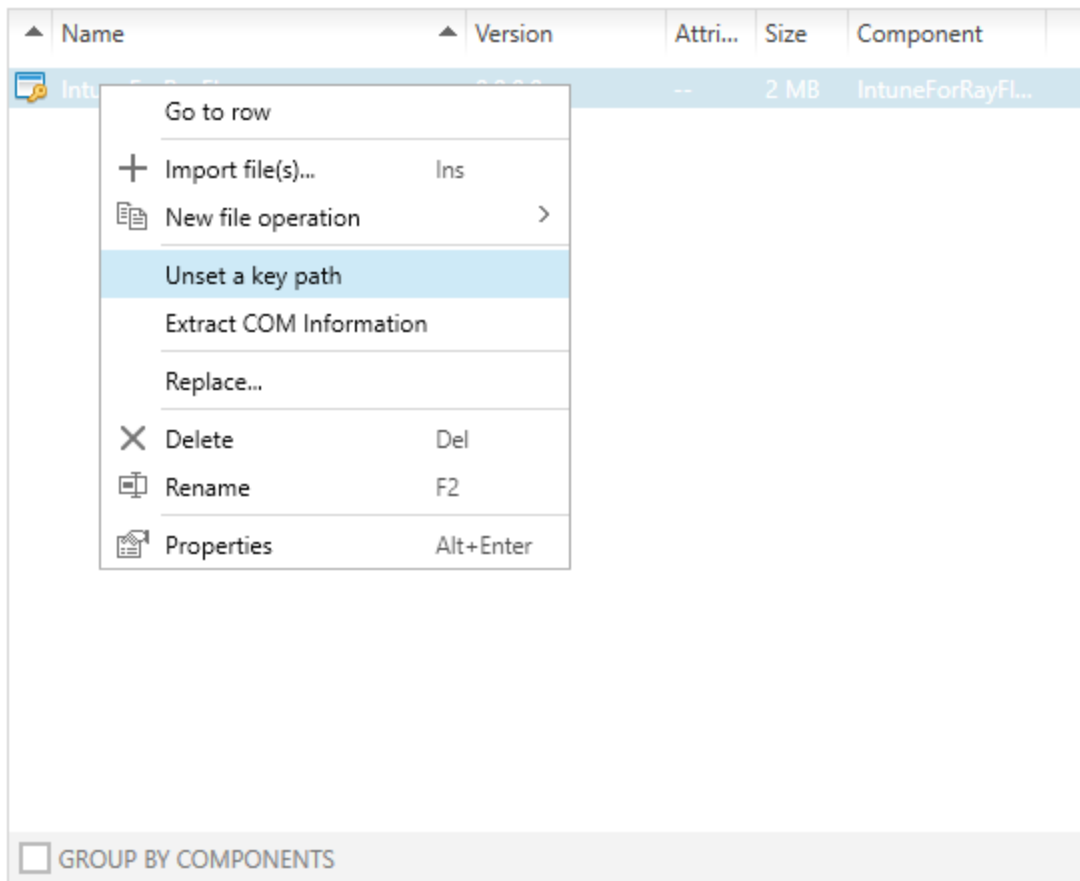
Repackaging to RPPX Format Is Now Available in PackBot **RPK-4647**

We added a new target format (RPPX) to the PackBot configuration dialog. RPPX is a project format for MSIX-based setups.



Better Control of KeyPath Resources **RPK-4659**

Based on a popular feature request, we implemented new context menu options to provide a quick removal of component key paths. This new function is available on both, the global (Registry, Files + folders) and on the Component level. When a key path is removed, the empty key path (component directory) is used automatically according to MSI best practices.



Other Improvements

- In MSIX/RPPX projects, the build menu can be now accessed with the F7 hotkey. [RPK-4640](#)
- More options have been added to control the user interaction and UI of PSADT projects. [RPK-4569](#)
- Minor UI improvements of PackWrapper PSADT actions. [RPK-4572](#) [RPK-4568](#) [RPK-4573](#)
- Inline script editing in PSADT projects is now more convenient due to a bigger editing area. [RPK-4552](#)
- It is now possible to use the File > Save as functionality to save an MSIX project under a different name. [RPK-4648](#)
- PSADT projects (.ps1 format) can be now opened from the RayPack.exe command-line. [RPK-4619](#)
- Improved conversion of ODBC entries from RCP to App-V. [RPK-4554](#) [ZEN-19607](#)
- Improved performance of INI file building from RCP projects. [RPK-4525](#) [ZEN-19356](#)
- It is now possible to drag and drop Registry entries between local browser and project view. [RPK-4533](#) [ZEN-19309](#) [ZEN-19608](#)
- When importing a REG file with special MSI characters, RayPack now asks whether to treat them literally or as MSI properties. [RPK-4534](#)
[ZEN-19309](#) [ZEN-19608](#)
- Pressing F1 (to open contextual help) now reuses previously opened windows. [RPK-1974](#)
- When importing an invalid .reg key, RayPack no longer creates an empty component for the new content. [RPK-4577](#)
- Updated bundled NSIS framework to version 3.08. [RPK-4691](#)

Resolved Issues

- Fixed the handling of the PSADT `Resolve-Error` function and conversion to PowerShell. [RPK-4483](#)
- Fixed an issue, where the first or the second snapshot could fail while repackaging on a virtual machine. [RPK-4547](#)
- Resolved minor UI bugs and issues in the MSIX Designer. [RPK-4463](#)
- Fixed an issue, where the saving of the MST file for the second time could not complete. [RPK-4527](#) [RPK-4531](#) [ZEN-19743](#)
- Fixed the import of DLL containing multiple icons into an MSI project. [RPK-3684](#)

- Fixed not-working pinning of MSI apps to the taskbar. [RPK-3761](#)
- Fixed an issue with the command-line tool `RpCmd.exe`, where it was not possible to sign packages while converting from `.rcp` to `.msi` / `.msix` using the parameters `-Certificate` and `-Password`. [RPK-4512](#) [RPK-4520](#) [RPK-4522](#)
- Fixed an issue where COM `TypeLib` entries and registry keys could be duplicated in the UI after making manual changes in the Tables view. [RPK-4519](#) [RPK-4576](#) [ZEN-19309](#) [ZEN-19608](#)
- Fixed an issue with the import of nested files structures in PSADT projects. [RPK-4520](#)
- Fixed a possible crash when removing a previously added fixup in the MSIX editor. [RPK-4524](#)
- Fixed the handling of parameters for the functions `Get-InstalledApplication`, `Execute-MSI`, `Execute-Process` and `Remove-MSIApplications` in PSADT projects. [RPK-4529](#) [RPK-4530](#) [RPK-4535](#) [RPK-4537](#)
- Fixed an issue where packaging was not possible on machines where the Windows Defender feature was not installed. [RPK-4542](#)
[ZEN-19577](#)
- Fixed an issue with the MSI shortcut editor where some localized texts were overlapping the content. [RPK-4545](#)
- Fixed the adjustment of complex conditions after removing an MSI property with row tracking enabled. [RPK-4578](#) [ZEN-19309](#)
[ZEN-19608](#)
- Fixed an UI issue with a missing description and an example of usage for PSADT functions. [RPK-4559](#)
- Fixed a warning shown when saving a PSADT project that removes a registry key. [RPK-4595](#)
- Fixed an issue with the creation of MST files from RCP projects. [RPK-4596](#)
- Fixed an exception when generating an executable bootstrapper for MSI projects. [RPK-4591](#)
- Fixed minor bugs with MSIX Registry handling (adding and removal). [RPK-4601](#) [RPK-4600](#)
- Fixed an exception when changing signatures in the Build Options followed by starting an MSIX build. [RPK-4604](#)
- Fixed an issue with partially clipped buttons in the COM class properties dialog. [RPK-4654](#) [ZEN-19608](#)
- Fixed the conversion of RCP to MSIX with empty multi-string Registry values. [RPK-4617](#)
- Fixed an exception when pressing `CTRL + Z` and typing paths to Visual Basic scripts in the Custom Action editor. [RPK-4618](#)
- Fixed issues with the removal of MSIX packages from PSADT files. [RPK-4653](#)
- Fixed the adding of scripts in MSIX projects. [RPK-4636](#) [RPK-4602](#)
- Fixed various minor issues with registry importing which was not possible with some REG files. [RPK-4655](#)