



RAYFLOW[®]

Workflow Management

Release Notes RayFlow
7.3

RayFlow is part of RaySuite.



**Copyright © Raynet GmbH (Germany, Paderborn HRB 3524). All rights reserved.
Complete or partial reproduction, adaptation, or translation without prior written permission is prohibited.**

Release Notes RayFlow RayFlow 7.3

Raynet and RayFlow are trademarks or registered trademarks of Raynet GmbH protected by patents in European Union, USA and Australia, other patents pending. Other company names and product names are trademarks of their respective owners and are used to their credit.

The content of this document is furnished for informational use only, is subject to change without notice, and should not be construed as a commitment by Raynet GmbH. Raynet GmbH assumes no responsibility or liability for any errors or inaccuracies that may appear in this document. All names and data used in examples are fictitious unless otherwise noted.

Any type of software or data file can be packaged for software management using packaging tools from Raynet or those publicly purchasable in the market. The resulting package is referred to as a Raynet package. Copyright for any third party software and/or data described in a Raynet package remains the property of the relevant software vendor and/or developer. Raynet GmbH does not accept any liability arising from the distribution and/or use of third party software and/or data described in Raynet packages. Please refer to your Raynet license agreement for complete warranty and liability information.

Raynet GmbH Germany
See our website for locations.

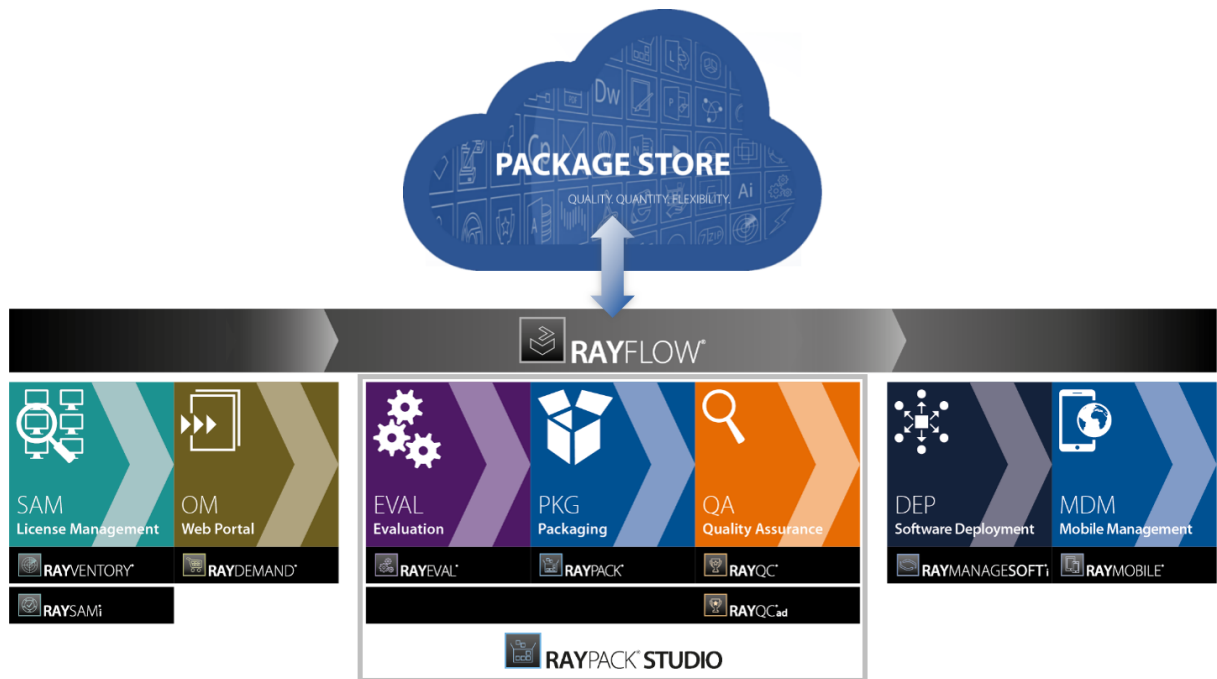
www.raynet.de

Contents

Introduction	4
What's New?	5
Security Improvements	6
Other Improvements	6
Resolved Issues	7
Migration	9
RayFlow Server	9
RayFlow Client	15
System Requirements	16
RayFlow Server	16
RayFlow Client	18
Additional Information	19

Introduction

This release of RayFlow 7.3 provides new features, as well as functional improvements and fixes for known issues from prior versions. RayFlow is available as a standalone product as well as it can serve as the backbone for the RaySuite Enterprise Solution.



Visit www.raynet.de for further information regarding the product and current community incentives.

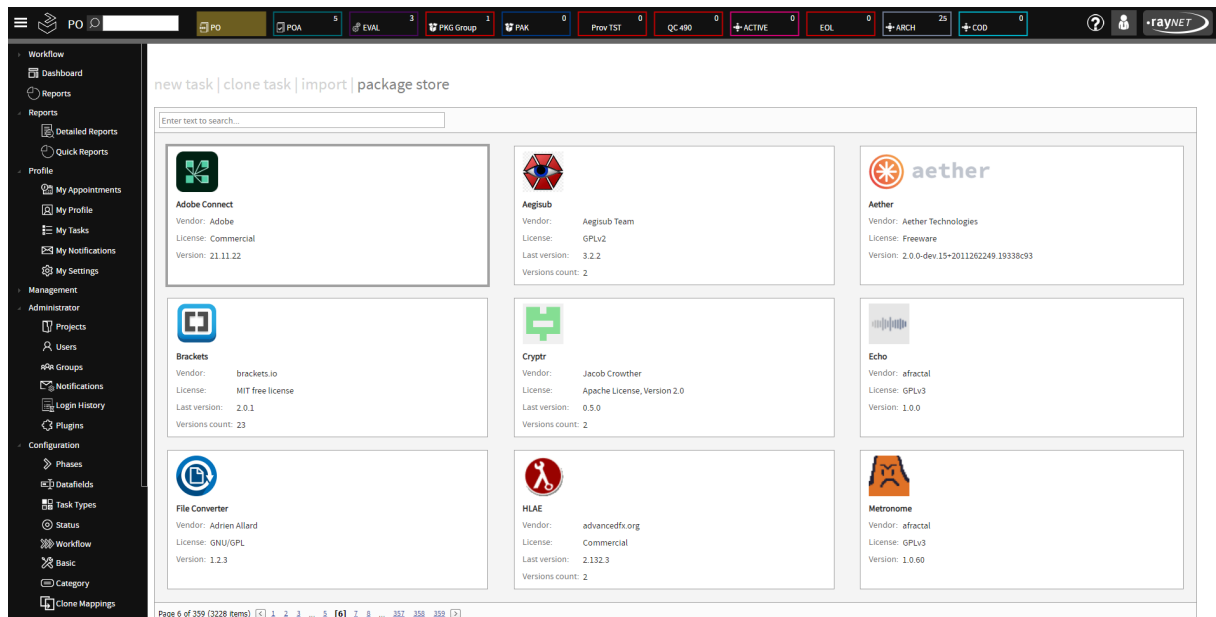
Raynet is looking forward to receiving your feedback from your RayFlow experience. Please contact your Raynet service partner or write an e-mail to sales@raynet.de to add your ideas or requirements to the RayFlow development road map!

What's New?

The following chapters contain an overview of the improvements, resolved issues, and the new features that are part of the new release of RayFlow 7.3.

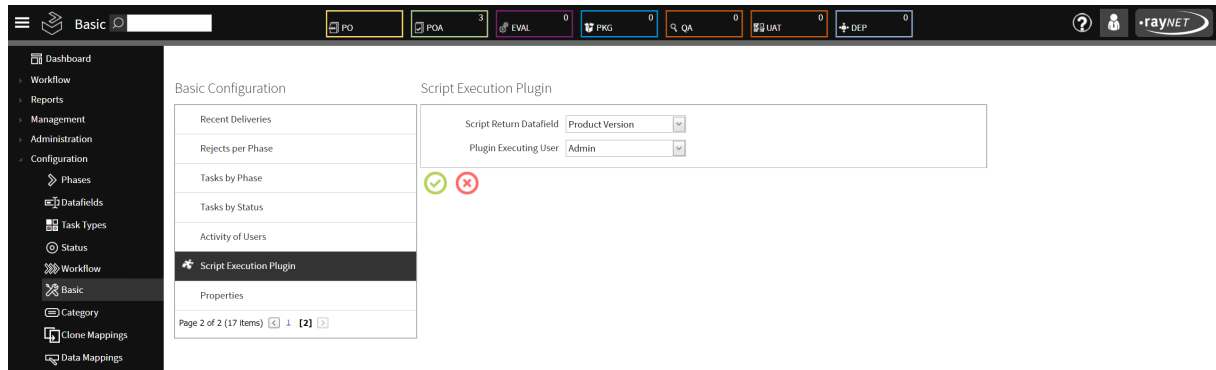
Package Store Integration With Thousands of Ready to Use Packages [RF-4621](#)

The relaunched Package Store platform offers several thousand app in 10K+ different versions, most of them with further configuration options. The Package Store has a simple interface which guides through the complete process. From the automatic downloading of sources, through the configuration, to the package generation. The packages are ready for deployment and can be deployed to popular deployment systems like Intune, SCCM, or RMS UEM.



Execute Scripts Based on Task Triggers [RF-4845](#)

RayFlow now has a plugin-based functionality which allows the user to start custom scripts in reaction to various triggers. This makes it possible to automate several features which were previously out-of-process. For example, starting automated deployment once a package reaches a certain status, performing clean-ups, informing external systems, and much more.



Security Improvements

- Fixed a security issue in which setting-up a new password required a backend connection that verified password conditions which on the other hand was sending the new password candidate in clear text. RF-4849
- Fixed an installation routine where password to service account could be logged in clear text. RF-4894

Other Improvements

- Restored the ability to edit tasks without leaving the phase overview screen with additional edit button present to open tasks in a new tab. RF-4776
- It is now possible to manually change the column widths in the **Phase** view as it used to be possible in RayFlow 6.0. RF-4777
- Improved the general performance when working with large projects with thousands of tasks. RF-4781
- It is now possible to sort tasks by their respective workflow phase in the **My Tasks**, **Workflow**, and **Batch** views. RF-4782 RF-4793
- It is now possible to order tasks by their type in the **Phase** view. RF-4784
- Both server and client are now upgraded to run on the .NET Framework 4.7.2. This change has impact on the software requirements. RF-4891

Resolved Issues

The following issues from the previous version of RayFlow have been resolved in this release.

- Fixed an issue where a random error (`Ticket is invalid`) could be shown due to expiration of internal session tickets. RF-4874 ZEN-19466 ZEN-19579
- Fixed an issue where custom filters could reset / break **Batch processing** and **My tasks** grid layouts. RF-4867
- Fixed an issue where adding a new data field could shuffle the column headers. RF-4862
- Fixed a security issue where an unprivileged user could see all tasks in the **Tracking** view. RF-4860
- Fixed sporadic internal server error when an unprivileged user opens the **Tracking** view. RF-4861
- Fixed an internal server error (`FormatException` error) while loading the **Phase** view. RF-4863
- Fixed finish type events not properly refreshing the single task view. RF-4846
- Fixed incorrect selector positioning for autocomplete fields. RF-4847
- Fixed issues during log-in. RF-4839
- Fixed an issue with missing clone task selection in the Clone Task view. RF-4785



Note:

This may require resetting the column layout after the upgrade!

- To reset the layout for all users, execute the following command on your database tabel:
`DELETE FROM [dbo].[UserSettings] WHERE Property Like '%GridLayout%'`
- Fixed an issue where opening the configuration of a data field could lead to a `NullReferenceException`. RF-4796
- Fixed an issue with the observer function which was working outside of the expected area. RF-4799
- Fixed an issue with undefined widths and missing icons in the columns **Status** and **Task Type** in the **My Tasks** view. RF-4799
- Fixed an issue where the auto-calculated column sizes may be too small. RF-4774
- Fixed an issue where it was not possible to run plugins of the type BATCH. RF-4775
- Fixed an error when displaying Date related data-field details. RF-4772

-
- Fixed an issue where the **Phase Overview** was using a wrong format for **Date Fields**. RF-4769
 - Fixed wrong Datetime conversion in the phase view. RF-4770
 - Fixed an issue where date field values were decremented by one day on every save. RF-4768
 - Removed obsolete ODBC entries from the MSI installer. RF-4896
 - Restored the missing default log configuration (`log4net.config`) in RayFlow client. RF-4875
 - Fixed the internal handling of MIME types for bundled styles and scripts. RF-4844
 - Fixed the selection of users in Batch processing to only include users that have edit permissions on the selected phase. RF-4832
 - Fixed UI issues with displaying of the flag `ShowInFlow` for tools. RF-4684

Migration

This chapter of the document is meant to help users upgrade from their existing RayFlow version to RayFlow 7.3.

RayFlow License

If the previously installed RayFlow version has been a version prior to 4.0, it will be necessary to activate the RayFlow using a new `.rs1` license file instead of the old `.license` files that were used previously to 4.0. In this case, reactivate your RayFlow license by using the license activation tool or contact the Support Team using our [Support templates](#). Information on how to reactivate a Raynet Product License can also be found in our [KnowledgeBase](#).

RayFlow Server

Migration from 1.x RayFlow Servers

If migrating from a 1.x RayFlow server to RayFlow 7.3, it is recommended to ask for the help of our consultants.

Migration from 2.x RayFlow Servers or Higher to 7.3

1. Make a Backup of the Current System

(This step is optional but strongly recommended)

A. Uninstall the previous version of RayFlow Server:

- Start the SQL Server Management Studio.
- Right-click on the existing RayFlow database and select **Task > Back Up** from the context menu.

B. Backup the file system:

- Go to the RayFlow Server Installation directory (`%INSTALLDIR%`).
- Right-click on the directory and select **Send To > Compressed Zip Folder**.
- Store the database and the file backups at a safe location.



Note:

The content of the previous related `web.config` file will later be needed for the edition of the new `web.config` file.

2. Uninstall the Previous RayFlow Server

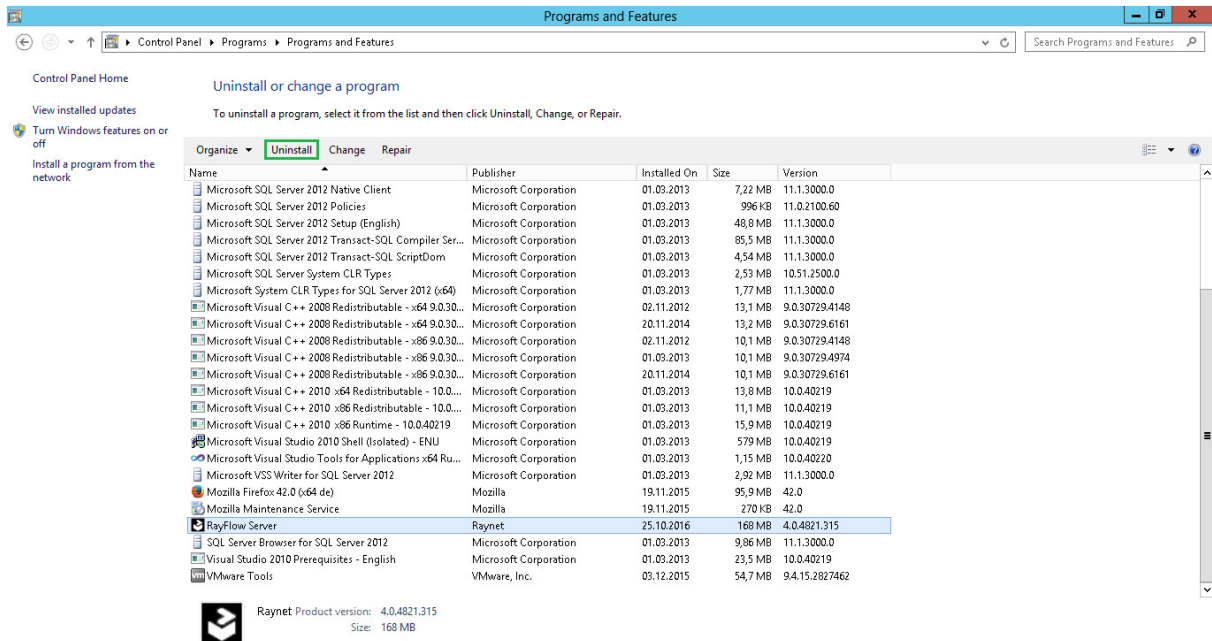


Warning:

If step 1 has been skipped, make sure that the `web.config` file of the previous installation is kept available in a safe location.

After the old `web.config` file has been saved uninstall the old version of RayFlow Server.

To uninstall RayFlow Server use the Windows Control Panel. In the **Uninstall or change a program** section, select the entry for RayFlow Server. Right-click on the entry and select **Uninstall** from the context menu.

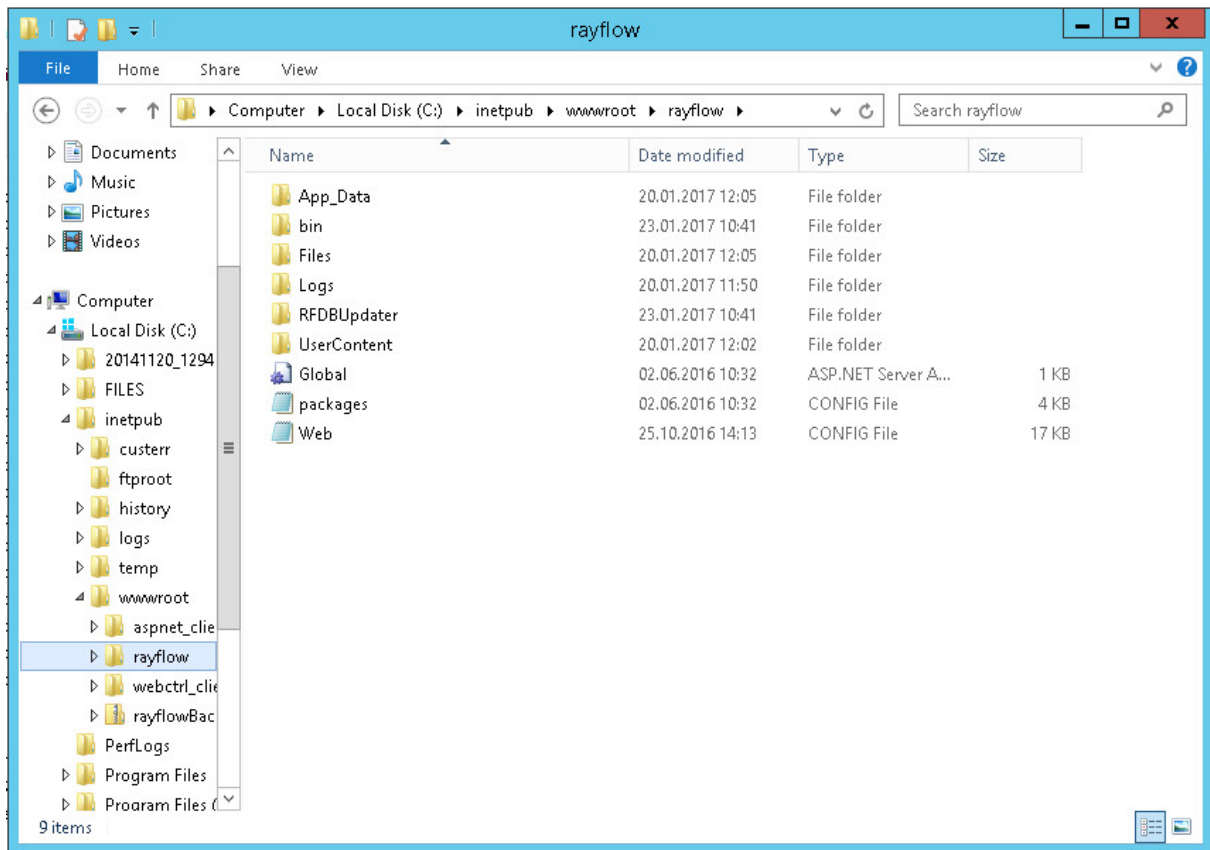


Be aware:

Folders which contain customized data (icons, license files, files uploaded to tasks, etc.) will not be deleted by this action and will remain in the `%INSTALLDIR%` or in its subfolders.

In the screenshot below there is an example of data that will remain after uninstalling the old

RayFlow Server.



3. Installation of RayFlow Server 7.3

Install the current version of the RayFlow Server to the %INSTALLDIR% folder using the MSI installer. Detailed information on how to install the new RayFlow Server can be found in the Server Installation Guide for RayFlow.



Warning:

Skip the database creation during the installation!

4. Edition of the New Web.config File

Open the `web.config` file which is located in the %INSTALLDIR% in a text editor and replace the connection string with the connection string of the old `web.config` file (see either the first or the second step). Save the changes to the new `web.config` file.

Example:

```
<!-- Your connectionstring -->
<connectionStrings>
  <add name="RayflowEntities"
    connectionString="Data Source=(local);Initial Catalog=Rayflow;Integrated
    Security=True;MultipleActiveResultSets=True;App=EntityFramework"
    providerName="System.Data.SqlClient"/>
</connectionStrings>
```

5. Upgrade the RayFlow Database

The database needs to be updated using the RayFlow-Updater. This is a simple console program which contains the four parameters which are necessary to update the RayFlow database to the latest state without the use of SQL scripts.

```
rfDBUpdater.exe -path %INSTALLDIR%\RFDBUpdater\ -upgrade -wait
```

The application itself is located in the following directory of the RayFlow Server installation: %INSTALLDIR%\RFDBUpdater\

Example of how to launch an update from a local folder:

```
rfDBUpdater.exe -upgrade -wait
```

Example of how to launch an update from any folder:

```
rfDBUpdater.exe -path %INSTALLDIR%\RFDBUpdater\ -upgrade -wait (with full path %INSTALLDIR%)
```

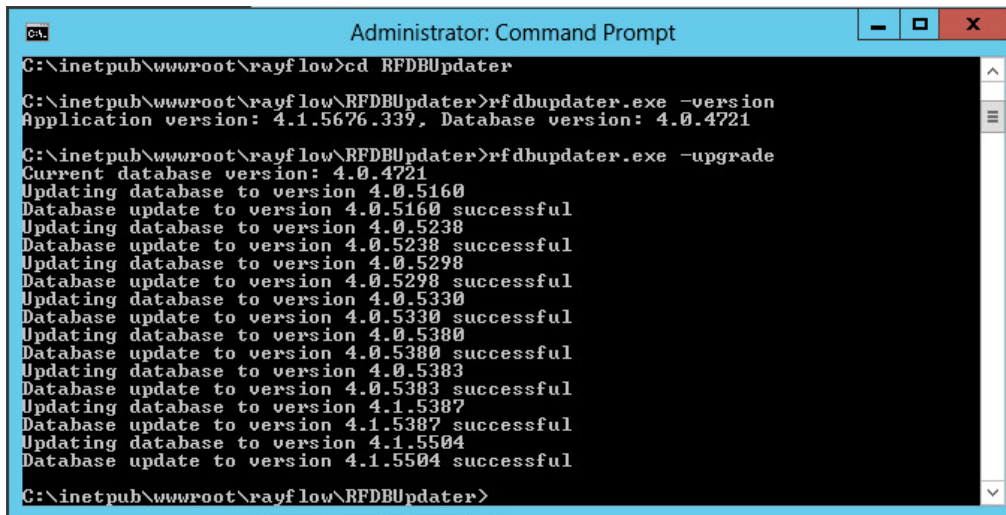
List of Arguments:

`-path`: The path containing the RayFlow Server installation. It is necessary for the Database/Connection string which will be taken from the `web.config` in the given path. At the same time, the path is the address of the SQL Scripts folder which also resides in the same folder. The path can be omitted if the command is launched from the RayFlow Server installation folder.

`-upgrade`: Using this parameter will update the database to the latest state.

`-version`: Get the current version of RayFlow.

`-wait`: Wait for a key action.



```
Administrator: Command Prompt
C:\inetpub\wwwroot\rayflow>cd RFDBUpdater
C:\inetpub\wwwroot\rayflow\RFDBUpdater>rfdbupdater.exe -version
Application version: 4.1.5676.339, Database version: 4.0.4721
C:\inetpub\wwwroot\rayflow\RFDBUpdater>rfdbupdater.exe -upgrade
Current database version: 4.0.4721
Updating database to version 4.0.5160
Database update to version 4.0.5160 successful
Updating database to version 4.0.5238
Database update to version 4.0.5238 successful
Updating database to version 4.0.5298
Database update to version 4.0.5298 successful
Updating database to version 4.0.5330
Database update to version 4.0.5330 successful
Updating database to version 4.0.5380
Database update to version 4.0.5380 successful
Updating database to version 4.0.5383
Database update to version 4.0.5383 successful
Updating database to version 4.1.5387
Database update to version 4.1.5387 successful
Updating database to version 4.1.5504
Database update to version 4.1.5504 successful
C:\inetpub\wwwroot\rayflow\RFDBUpdater>
```



Note:

If any errors are reported, please contact the support team.

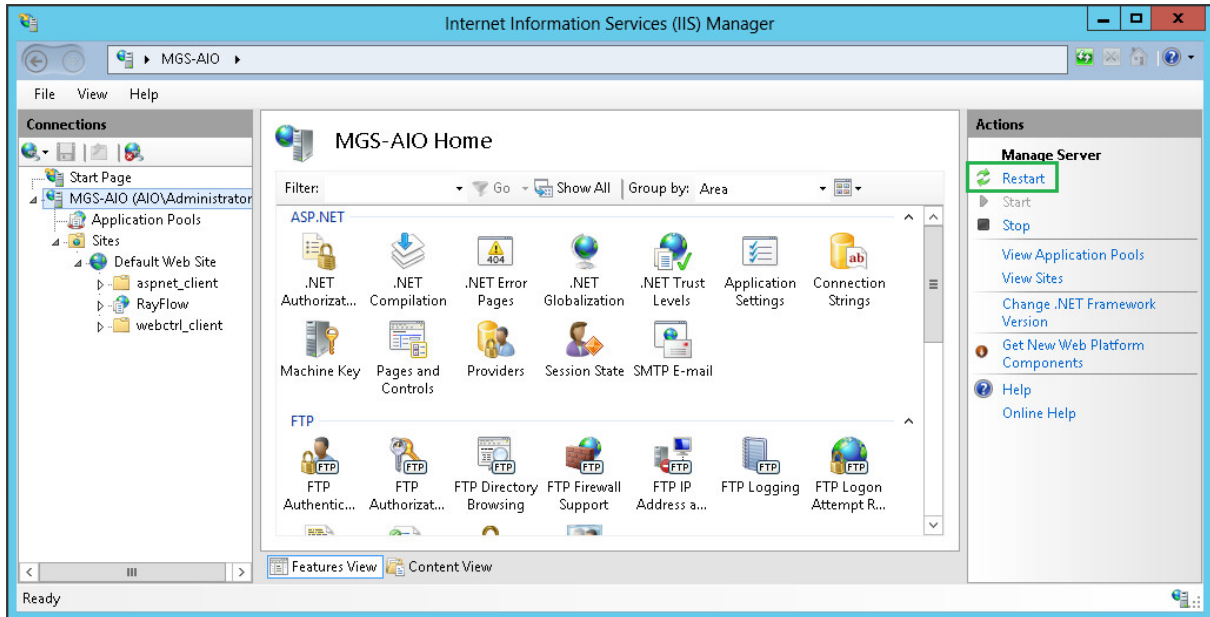
6. Manual Configuration

(The necessity of these steps depends on the environment.)

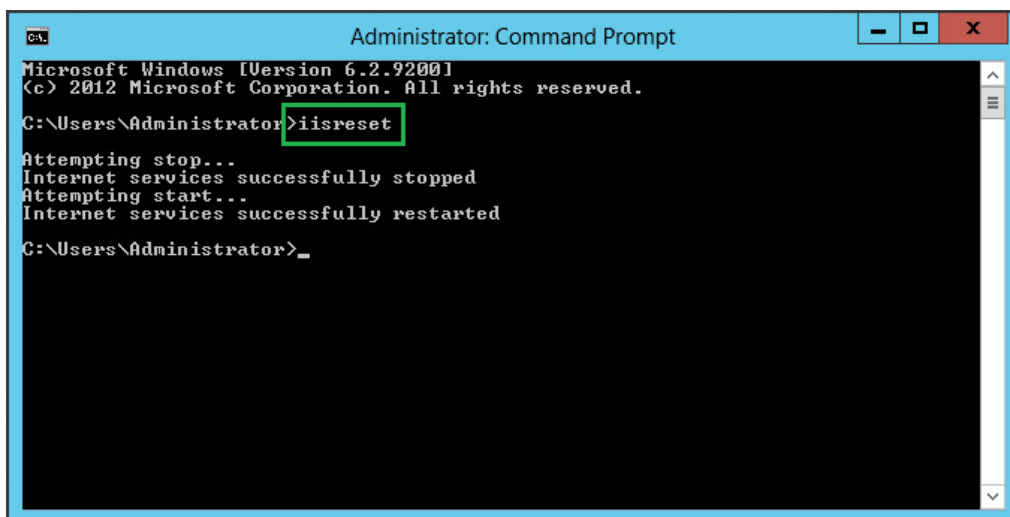
Internet Information Services (IIS) restart

Restart the Internet Information Services either using the Internet Information Services Manager or via Command Prompt using the `iisreset` command line.

Internet Information Services Manager:



"iisreset" command line:



RayFlow Client

Upgrading the RayFlow Application

General upgrade preparations

RayFlow 7.3 is delivered as an MSI software package. In order to install it safely:

1. Download the MSI package for RayFlow 7.3 from the Raynet resource repositories.
(If you have not already received credentials, please contact the Raynet support team via support@raynet.de to get them via email)
2. Copy all files that need to be kept for later reuse or look-up (such as `RayFlow.exe.config` for proxy settings, `dashboard.xml`)
3. Execute the RayFlow 7.3 MSI package and work yourself through the setup routine.

Adjusting the newly installed RayFlow instance

1. Define config files and settings according to the old system state.
2. Launch RayFlow.
3. If there are issues regarding broken or missing functionality, please feel free to contact the Raynet support team via support@raynet.de.

System Requirements

RayFlow Server

Hardware Requirements

Minimal

- Minimum disk space required: 120 GB
- Minimum RAM required: 1GB
- Pentium 4, 2.4 GHz Processor
- Network 100Mbit

Recommended

- CPU Intel Core i5 or i7
- 8GB RAM
- Disc Space: 500 GB RAID 10 (4x250GB)
- Network 100Mbit

Prerequisite Software

The following are the minimum software requirements for the installation and running of RayFlow 7.3.

- Windows Server 2008 R2 or higher
- Microsoft SQL Server 2008 or higher
- IIS 7 or higher
- .NET Framework 4.7.2

**Note:**

Minimum server requirement for .NET Framework 4.7.2 is Windows Server 2008 SP2. Further information on system requirements for .NET Framework 4.7.2, can be found

under the following link: <https://msdn.microsoft.com/en-us/library/8z6watww%28v=vs.110%29.aspx>

- Microsoft Report Viewer Runtime (Required to view SSRS Reports)

Please refer to the following links for system requirements related to different versions of Microsoft Report Viewer Runtime

Microsoft Report Viewer 2012 Runtime

<http://www.microsoft.com/en-us/download/details.aspx?id=35747>

Microsoft Report Viewer Redistributable 2008

<http://www.microsoft.com/en-us/download/details.aspx?id=577>

- Crystal Report Runtime 2010 13.0.14 (Only required if Crystal Reports are used for reporting)

Supported internet browsers:

- FireFox version 3 and newer
- Chrome
- Microsoft Edge
- It is recommended to use a screen resolution of at least 1024x768 pixels.
- Although other browsers might work they are not officially recommended.

RayFlow Client

Hardware Requirements

Minimal

- Screen resolution: 1024 x 768 pixels
- Color settings: 16 bit
- RAM: 2GB
- Disk space: 10GB

Recommended

- Screen resolution: 1280 x 1024 pixels
- Color settings: 32 bit
- RAM: 4GB or higher
- Disk space: 100GB or more

Additional Information

Further information regarding RayFlow can be found in several resources which are available.

- The *Operations Supplement* provides information about third-party software and libraries redistributed with RayFlow.
- The *Administration and Configuration Guide* provides detailed information about RayFlow Server.
- The *Installation Guide* provides detailed information on how to setup a RayFlow server instance.
- The *User Guide* provides information for user of the RayFlow client.
- The product website <https://raynet.de/en/Raynet-Products/RayFlow> provides information about the product, news, and support.
- Raynet and its partners offer a range of training courses that can also be customized to meet your requirements. For more information on these courses, speak with your Raynet consultant or contact the Raynet Sales department via sales@raynet.de.



Raynet GmbH

Technologiepark 22
33100 Paderborn, Germany

T +49 5251 54009-0

F +49 5251 54009-29

info@raynet.de

support@raynet.de

www.raynet.de