

PACKAGINGSUITE

RAYFLOW. RAYEVAL. RAYPACK. RAYQC

Enterprise Software
Packaging

Release Notes Packaging Suite
5.0

Packaging Suite is part of RaySuite.



**Copyright © Raynet GmbH (Germany, Paderborn HRB 3524). All rights reserved.
Complete or partial reproduction, adaptation, or translation without prior written permission is prohibited.**

Release Notes Packaging Suite

Raynet and RayFlow are trademarks or registered trademarks of Raynet GmbH protected by patents in European Union, USA and Australia, other patents pending. Other company names and product names are trademarks of their respective owners and are used to their credit.

The content of this document is furnished for informational use only, is subject to change without notice, and should not be construed as a commitment by Raynet GmbH. Raynet GmbH assumes no responsibility or liability for any errors or inaccuracies that may appear in this document. All names and data used in examples are fictitious unless otherwise noted.

Any type of software or data file can be packaged for software management using packaging tools from Raynet or those publicly purchasable in the market. The resulting package is referred to as a Raynet package. Copyright for any third party software and/or data described in a Raynet package remains the property of the relevant software vendor and/or developer. Raynet GmbH does not accept any liability arising from the distribution and/or use of third party software and/or data described in Raynet packages. Please refer to your Raynet license agreement for complete warranty and liability information.

Raynet GmbH Germany
See our website for locations.

www.raynet.de

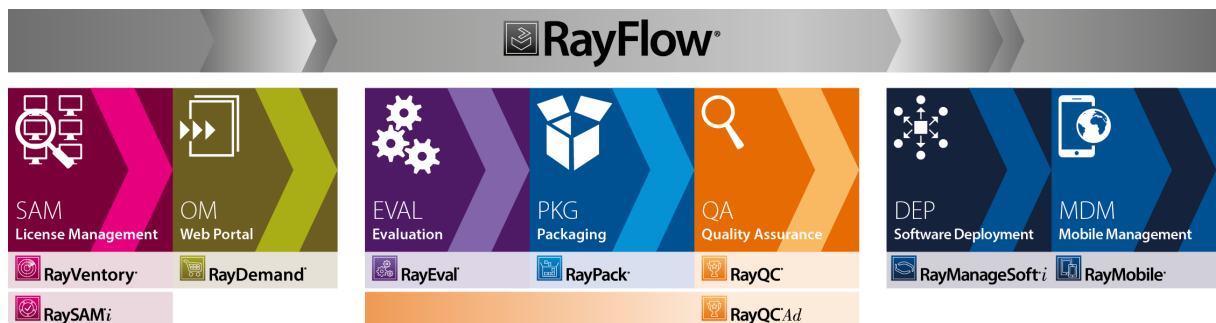
Table of Contents

Introduction	4
What's New?	5
General	5
RayPack	6
PackBench	12
RayFlow Client	15
RayQC	17
RayQC Advanced	19
RayEval	21
PackManager for App-V	23
Resolved Issues	25
RayPack	25
PackBench	27
RayFlow Client	27
RayQC	28
RayQC Advanced	29
RayEval	30
PackManager for App-V	30
Migration	31
RayPack / PackBench	31
RayFlow Client	32
RayQC / RayQC Advanced	33
RayEval	36
System Requirements	37
Hardware Requirements	37
Supported OS	38
Prerequisite Software	38
Additional Information	40

Introduction

Packaging Suite 5.0 is the next iteration of Raynet's framework for the creation and management of software packages. Packaging Suite 5.0 includes powerful tools with new features that automate and accelerate holistic packaging projects.

Packaging Suite covers all the steps: From compatibility checks of software applications and packages to the evaluation to the packaging and the subsequent quality control as well as to the clearly structured workflow management. The perfectly matched software products allow to efficiently pass through the individual phases of a packaging process. At the same time, they enormously accelerate the workflow: the integration of all products into RayFlow enables an extremely comfortable exchange of data and information.



Enterprise Application Lifecycle Management

This release contains new features, enhancements and bug fixes for all of these applications: RayFlow (client), RayPack, PackBench, RayQC, RayQC Advanced, and RayEval.

Visit www.raynet.de for further information regarding the product and current community incentives.

Raynet is looking forward to receiving your feedback from your Packaging Suite experience. Please contact your Raynet service partner or write an e-mail to sales@raynet.de to add your ideas or requirements to the Packaging Suite development road map!

What's New?

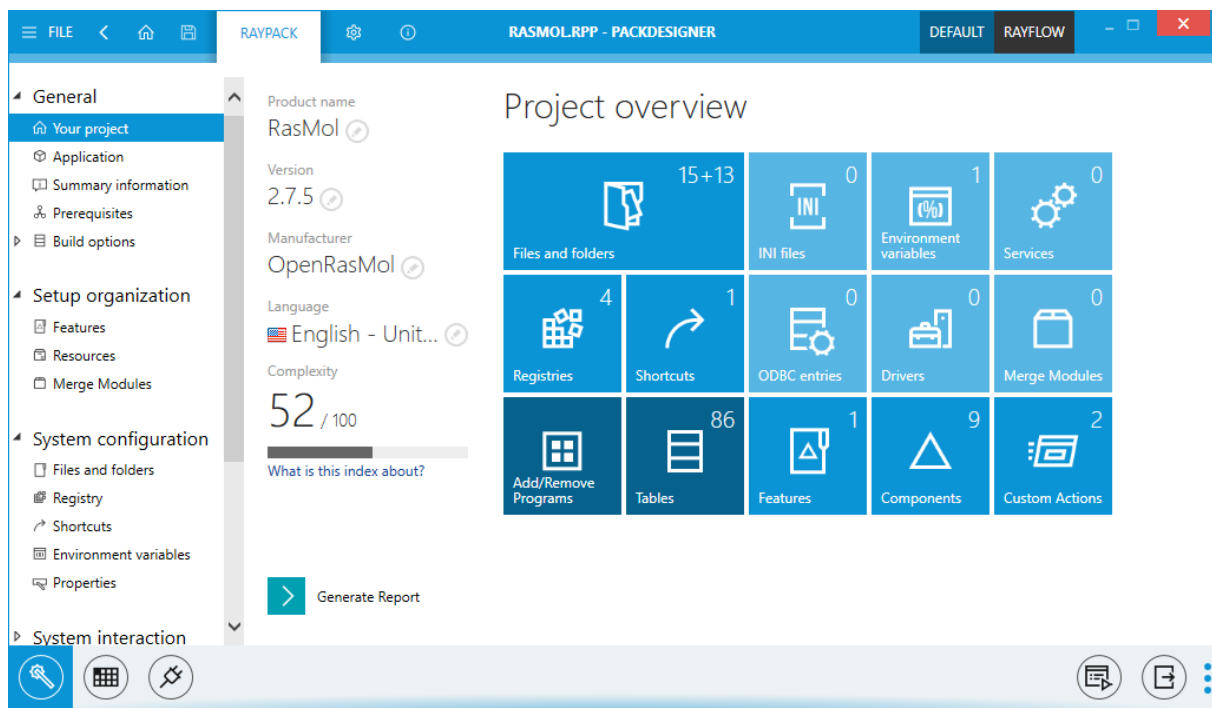
The following chapters contain an overview of the improvements, resolved issues, and the new features that are part of the new release of Packaging Suite 5.0.

General

New User Interface

All Packaging Suite components received an overhaul of the user interface. The new design is crispier, and with some subtle touches working with our product is faster, more productive and visually attractive. We have used influences from common design changes in Windows Operating systems and combined them with our distinctive look and feel to provide a fresh yet familiar work environment.

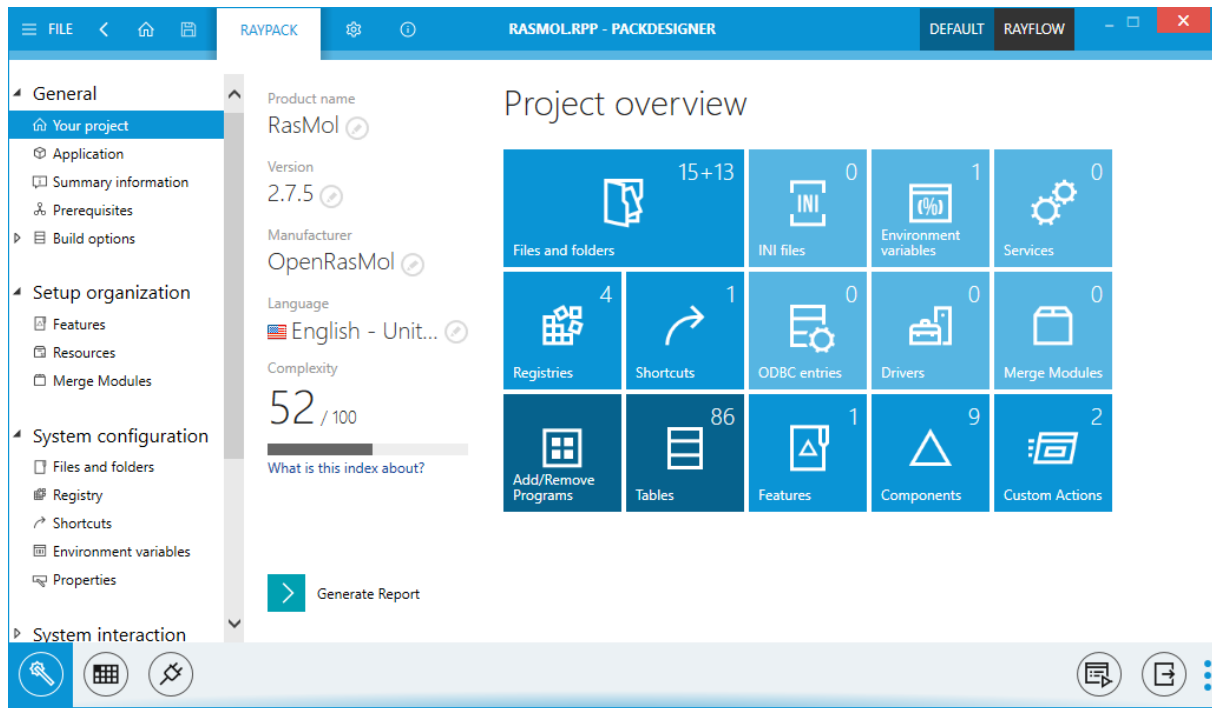
- Product logos and icons have changed.
- The application shell is smaller, leaving more place for the actual content.
- The icons have been redesigned for a better visual indication of features.
- Dashboards are compacted and their scaled content provides more information at once.
- Animations and transitions between screens (when enabled) are much faster and less obtrusive.
- In several products we have redesigned the recent items display - not only are these views consistent, but also provide new functions like pinning/unpinning.



RayPack

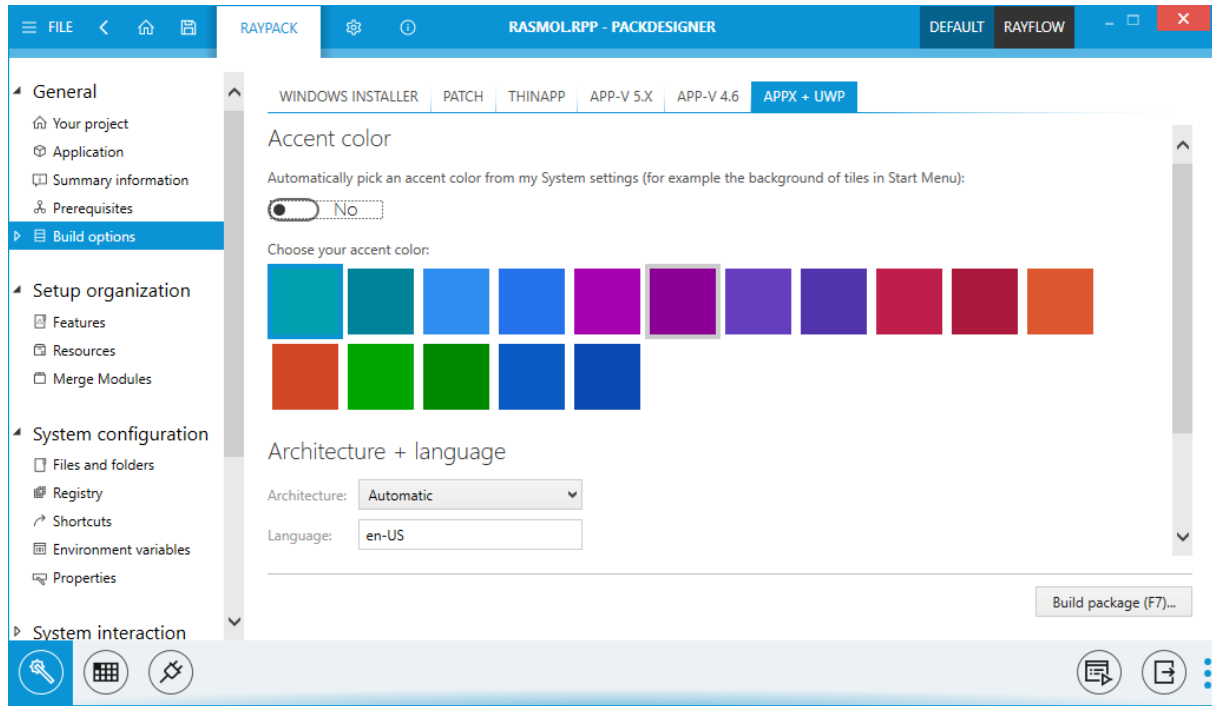
New User Interface and icons RPK-2347

As with other Packaging Suite components, this release brings an overhauled user interface which is crispier and faster. We have used influences from common design changes in Windows Operating systems and combined them with our distinctive look and feel to provide fresh yet familiar work environment.



Conversion and repackaging to Windows 10 APPX/UWP Format RPK-2282

RayPack can now create packages that use the UWP Bridge to deliver legacy Win32 applications in an .appx container that can be distributed via Windows Store and that can use new functions and security features of the Windows 10 UWP Platform. Conversion to UWP/APPX format is supported for both repackaged and converted applications.

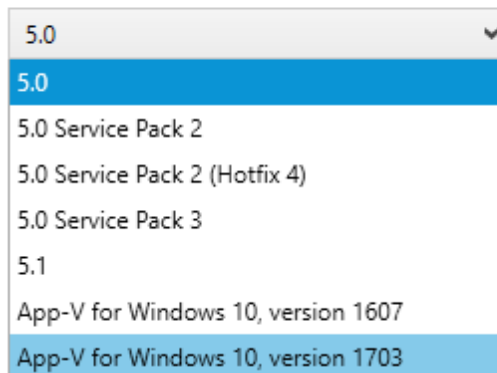


Support for App-V 5.0 SP2, App-V 5.1, App-V 5.2 for Windows 1607 and 1703 [RPK-2350](#)

With this new release it is possible to target a specific App-V version. While newer target versions offer more functions and bug fixes, the older ones are likely to be better supported and have a larger install base. Regardless of user choice, RayPack can generate a package in a proper format and automatically uses features available on a given platform as required. And to stress that we can support App-V 5.1 and App-V for Windows 10, the name 5.0 has been replaced with 5.X throughout the UI.

Version

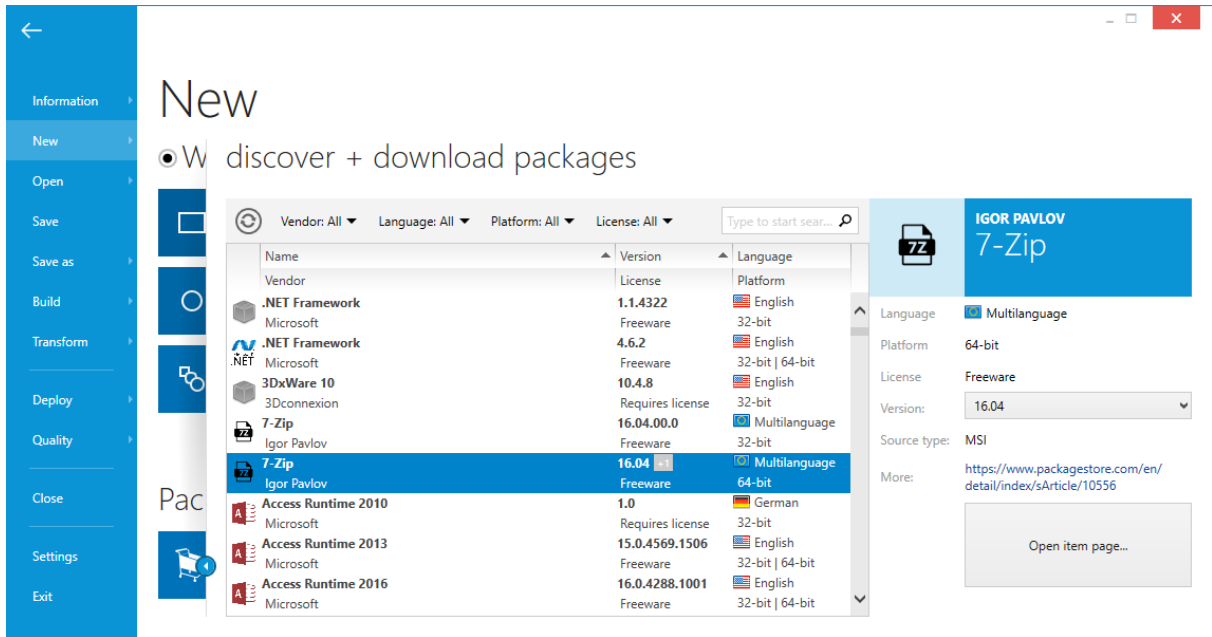
Select the target package version used for the converting process:



Integration with PackageStore [RPK-2260](#)

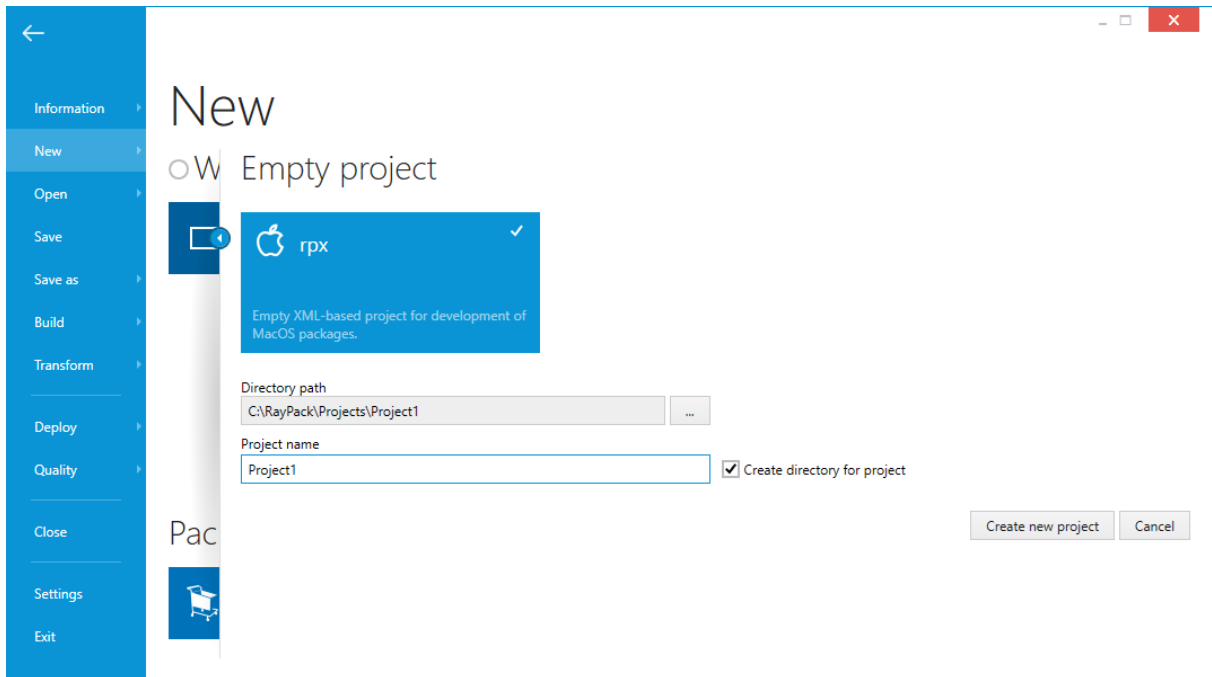
Already know our PackageStore? If yes, then take a look at the integration we implemented. Browsing for packages has never been any simpler than using our redesigned New menu. In case you missed out on the

launch of PackageStore, make sure to check it out at packagestore.com.



Support for MacOS Packages RPK-2316

RayPack can now create non-Windows projects. In version 5.0, we have built-in native support for the creation of .pkg files, allowing applications to be installed on Mac systems. The new package editor shares the simplicity of existing PackDesigner editors, while at the same time providing all important aspects of Mac packaging.



Wrapping generated projects with PowerShell AppDeploymentToolkit RPK-1746

One of the new options built into RayPack 5.0 makes it possible to automatically create a wrapper from the award-winning PowerShell AppDeploymentToolkit. For more information about the toolkit itself, visit the webpage: <http://psappdeploytoolkit.com/>

Signing and wrapping

Sign the MSI each time the project is built

Note: This option requires a valid [signature configuration](#)

After the build is complete, create an executable bootstrapper / wrapper

A screenshot of a dropdown menu with the following options:

- Executable (*.exe) bootstrapper (NSIS) (selected)
- Batch file (*.cmd) bootstrapper
- PowerShell (*.ps1) bootstrapper (PSAppDeploymentToolkit)

Many improvements and greater success rate for conversions from MSI/RPP/RCP to App-V 5.x and App-V 4.6 RPK-2261 RPK-1678

We have reviewed how our converter worked with several popular applications and came up with improvements that led to an even better success ratio of conversions to App-V 5.X and App-V 4.6 formats. For the newest App-V format there is an improved support for Shell Extensions, COM classes, TypeLib, & ProgId. Also conversion of 64-bit packages has been vastly improved. The conversion should be also much faster than in RayPack 4.1. Additionally, this new version of RayPack improves support for App-V MSI wrappers (the setting which is now configurable per-profile).

APP-V 5.X APP-V 4.6

Launcher

Create MSI wrapper

Copy App-V launcher to the output folder

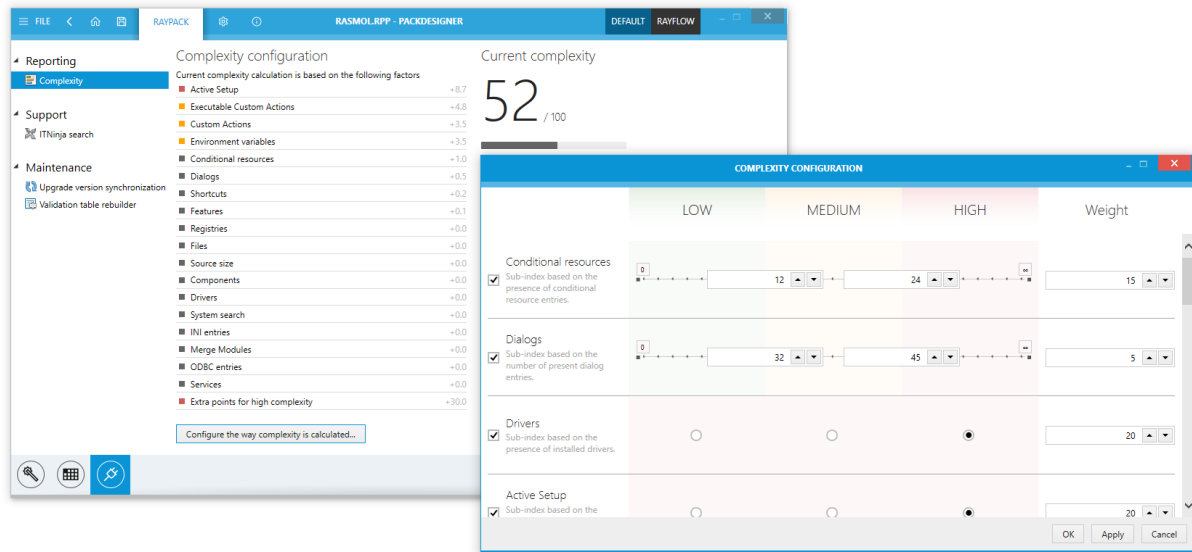
The launcher can be used to quickly test and troubleshoot the produced App-V packages.

Plugins system RPK-1740

RayPack 5.0 plugins. In this first official launch, there are several plugins available that cover the following new functions:

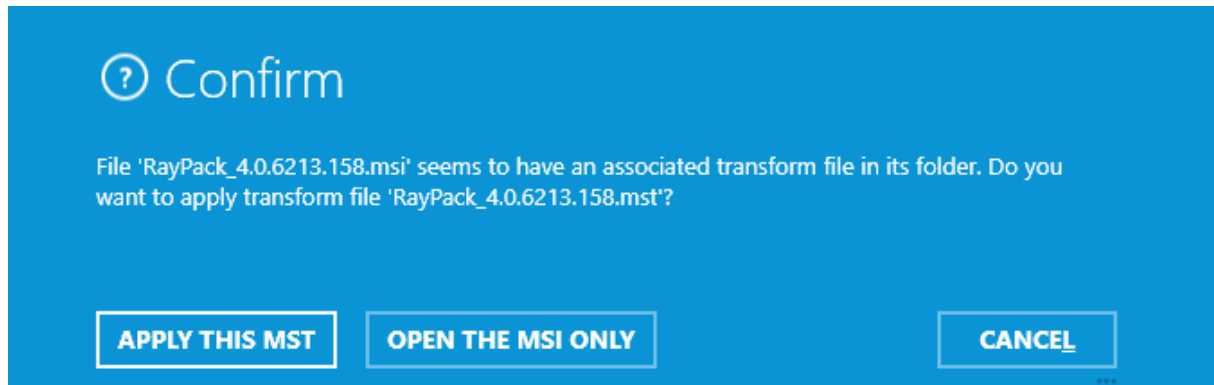
- Automatic handling of version boundaries within the `_Upgrade` table
- Maintenance of the `_Validation` table
- Searching for packaging-relevant information in leading internet-based sources (IT Ninja)

Additionally, we have reworked the complexity index. As a plugin-based solution it offers new options and configuration possibilities that were not possible before.



When opening an MSI file, RayPack suggests matching MST candidates from the same folder RPK-1119

RayPack encourages to use MST transforms over direct MSI editing. When opening an MSI file, RayPack 5.0 tries to find out if there is a potential MST candidate within the same folder and prompts the user to open it, if available. Thanks to this mechanism opening the correct MSI + MST combination is much faster.



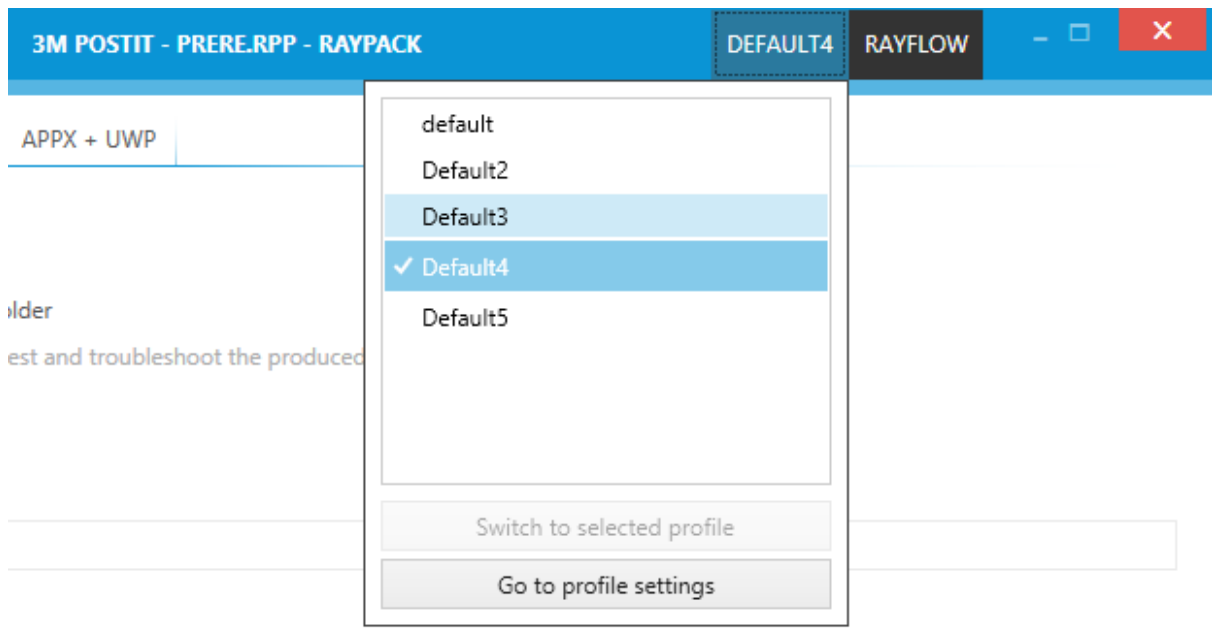
Ability to execute scripts (macros) on currently opened MSI/RPP/MST projects RPK-1547

Recognizing the importance of existing scripts using Windows Installer COM + MSI automation, RayPack allows to run scripts (macros) directly on currently opened projects. This way users can automate complex tasks which are otherwise not possible with a built-in templating system. Because of flexibility of this module, anything starting from Visual Basic to Powershell but also a simple executable can be used as an executor of a scripted method.

Quick profile selector is now available in the application title bar RPK-2291

Profiles have always been an important feature of RayPack, allowing fluent teamwork on many different projects. This new release brings enhancements to the profile selector and makes it faster to see and change the

current profile by using a dedicated drop-down in the top right corner. This way users always know which profile is in use and can change it to the required one within seconds.



Other

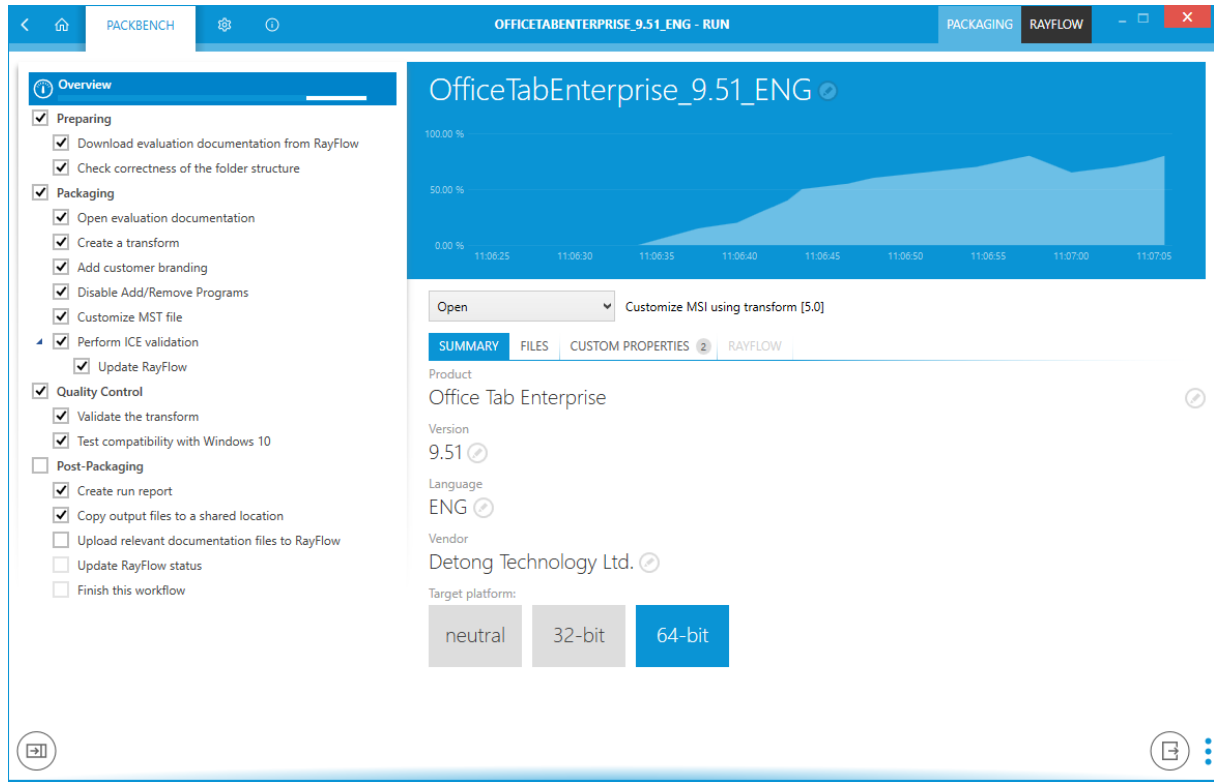
- [RPK-81](#) [RPK-2255](#) Updated and extended default exclusion lists
- [RPK-2373](#) Improved and updated default System Search list
- [RPK-2371](#): Improved Windows 10 exclusion list
- [RPK-2310](#) CAB files are also signed together with main MSI
- [RPK-2312](#) Custom Action view has a new interface for viewing and changing action positions and conditions
- [RPK-2328](#) RayPack generates MSI-specific information about signatures of media files
- [RPK-2329](#) MSI files without access to a time-stamp server are now supported
- [RPK-2247](#) It is now possible to type the new project name in the New Project Screen
- [RPK-1747](#) All virtualization settings have been moved to the profile and are available in a single tab called "Conversion"
- [RPK-1093](#) Components view in PackDesigner indicates whether the component is 64-bit
- [RPK-2332](#) Performance of Merge Module import has been improved, especially for large packages
- [RPK-223](#) Merge Modules can be added to the Library by a simple file copy operation (no more XML editing required)
- [RPK-2361](#) Extended virtualization settings, renamed from Virtualization to Conversion
- [RPK-2299](#) Permissions scanning is disabled in default profile settings for a better initial experience

- **RPK-2288** Ability to specify more file extensions at once in linked folders dialog
- **RPK-2147** Full VFS Write Mode is now supported when targeting App-V 5.0 SP2 packages
- **RPK-2202** Standard temporary table `_Storage` is now visible if present within the package
- **RPK-2146** RPP/MSI Summary Info content is now imported as a comment in exported App-V 5.x packages
- **RPK-1771** The algorithm for changing sequence numbers of actions has been changed to provide greater flexibility and stable sequence numbers
- **RPK-1138** When adding a new MSI property, the view is scrolled and the new item is highlighted
- **RPK-515** When adding a new Custom Action from the SEQUENCING tab, the action is by default added to the currently viewed sequence
- **RPK-2364** Stability and performance improvements to PDF report generator
- **RPK-2363** Stability and performance improvements to App-V 4.6/5.x generator
- **RPK-2295** Stability and performance improvements to internal logging system
- **RPK-2342** Checkbox label on the last page of the PackRecorder wizard has been renamed to more accurately describe the next action
- **RPK-2347** Redesigned recent items menu, added an ability to pin elements
- **RPK-2372** Added new and updated existing predefined prerequisites
- **RPK-1392** When adding a registry operation in the components view, the currently selected hive is used as the root
- **RPK-2412** Improved application title bar behavior

PackBench

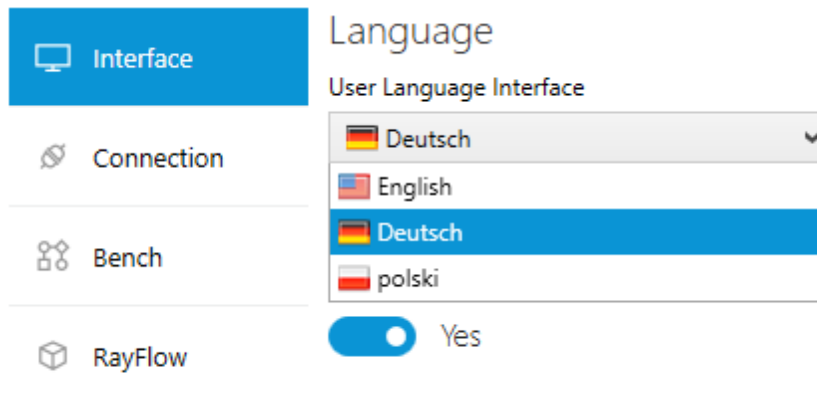
New User Interface and icons **BEN-273** **BEN-267**

As with other Packaging Suite components, this release brings an overhauled user interface which is crispier and faster. We have used influences from common design changes in Windows Operating systems and combined them with our distinctive look and feel to provide a fresh yet familiar work environment.



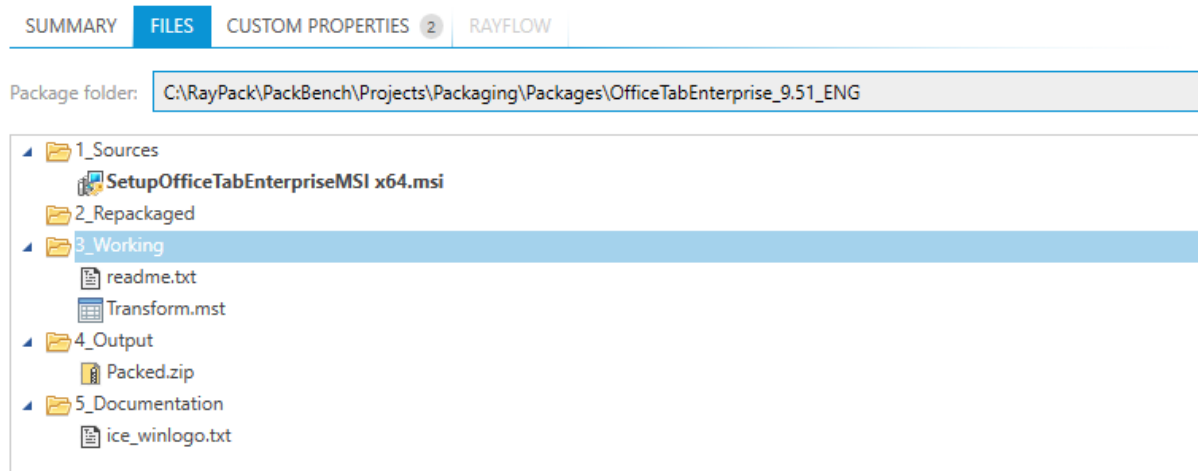
Support for multilingual user interface (English/German/Polish) BEN-14 BEN-269

The initial release of PackBench was English-only. We have now made the program multilingual by supporting additional languages: German and Polish. Plus, for users installing a new, clean database there is an option to install localized sample workflows and tools.



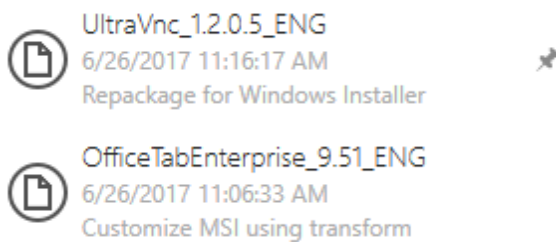
File browser shows different icons of files based on their extensions BEN-259

We have implemented a popular feature request to differentiate files inside the OVERVIEW > FILES view. From now on, file icons present the target extension, making it easier to find the required data.



Ability to pin recent items in the Recent menu (Dashboard) [BEN-282](#)

In PackBench 5.0 we have redesigned the Recent runs view. The new consistent look & feel and extended functionality allows users to pin their favorite or frequent projects to the top of the list, making sure that they stay there regardless of other parallel tasks.



Other

- [BEN-268](#) SQL scripts used to set up the initial database are now part of the installation and can be accessed within Program Files folder
- [BEN-262](#) Default installation contains a bundled RayQC Checklist and updated workflows that make use of it
- [BEN-264](#) For strict workflows, tool buttons are now disabled if their tasks are not active
- [BEN-278](#) Improved application title bar behavior
- [BEN-272](#) Stability and performance improvements of the Report Generator
- [BEN-280](#) Added support for additional product variables (for example RayBI Studio and RayBI Publisher)
- [BEN-265](#) In task view, if a tool has no resolvable parameters then the resolved command lines are not displayed anymore

RayFlow Client

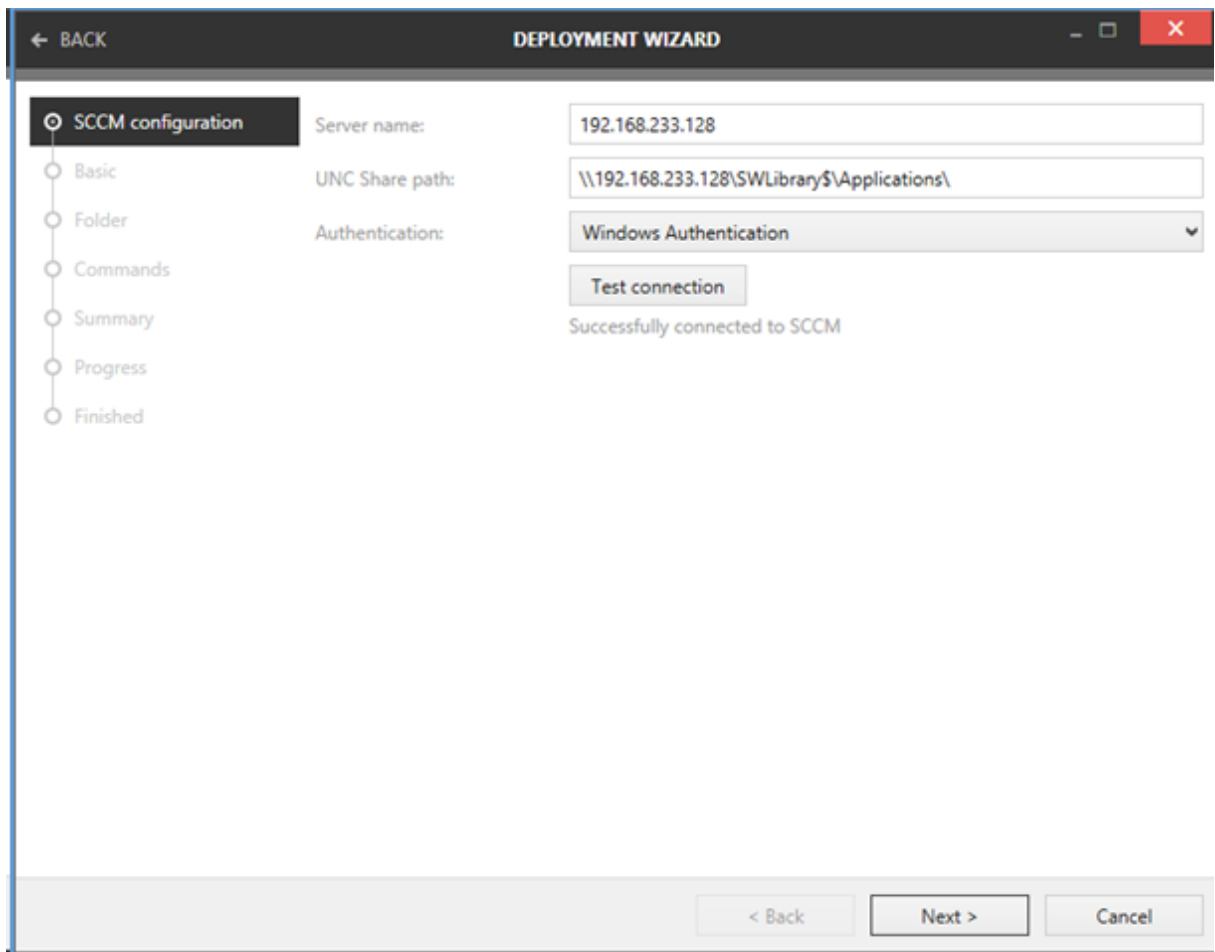
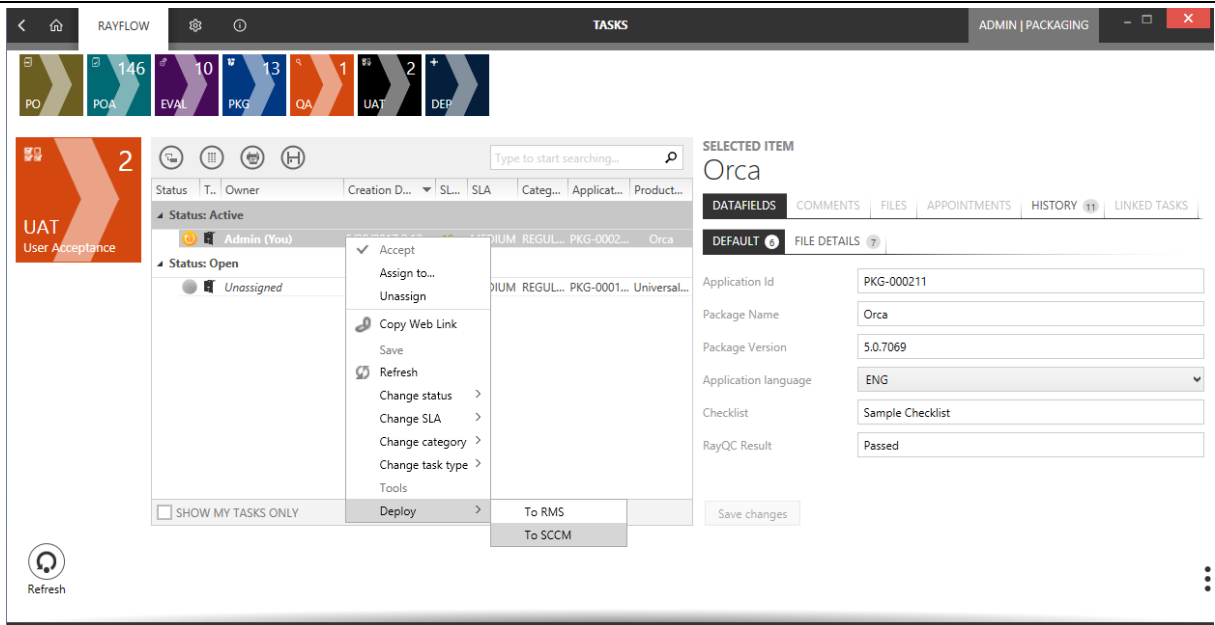
New User Interface and icons

As with other Packaging Suite components, this release brings an overhauled user interface which is crispier and faster. We have used influences from common design changes in Windows Operating systems and combined them with our distinctive look and feel to provide a fresh yet familiar work environment.



Package Deployment Integration

The RayFlowClient 5.0 now has deploy context menu items for RMS & SCCM providing access to a deployment wizard:



Improved Quick Report Handling

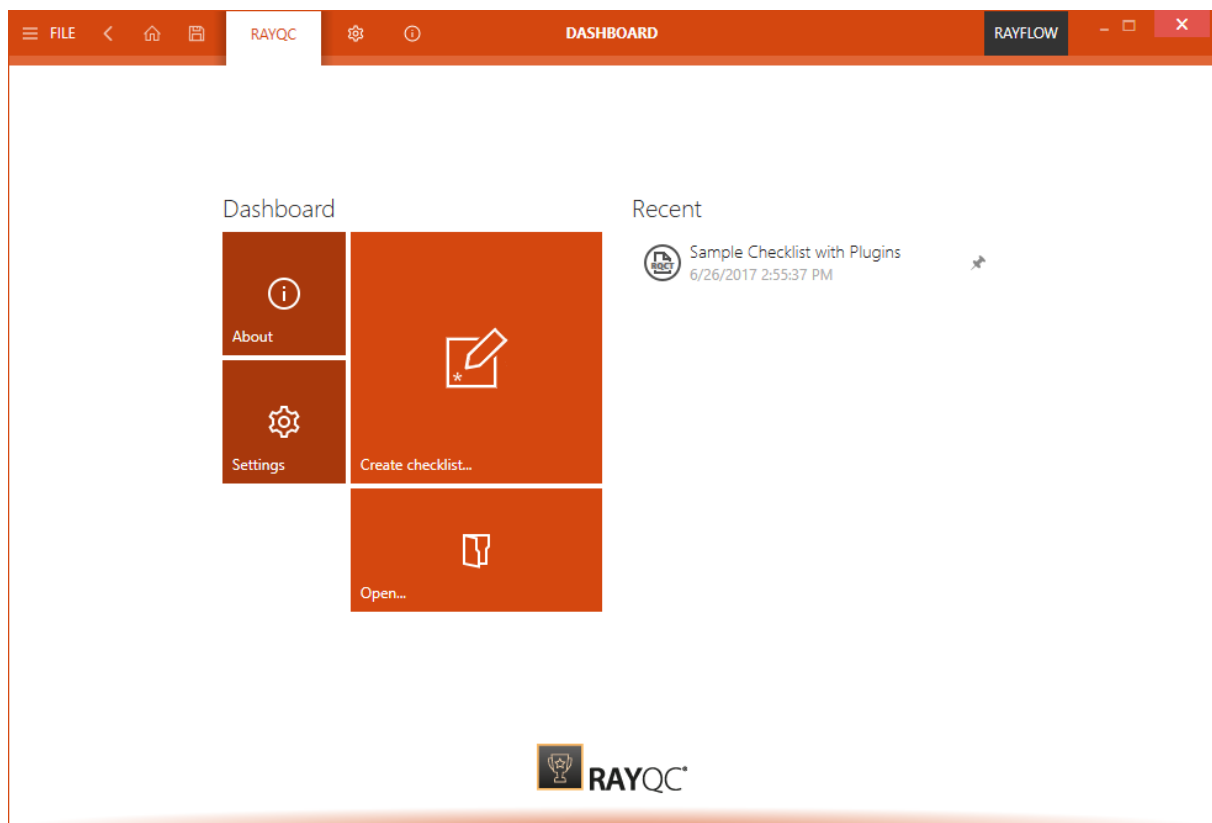
The RayFlowClient 5.0 now only refreshes a projects dashboard when one of the following actions is performed:

- Loading the project.
- Creating a task.
- Editing a tasks datafields.
- Any right-click context menu action.
- Manually refreshing a phase.

RayQC

New User Interface and icons [RQC-773](#)

As with other Packaging Suite components, this release brings an overhauled user interface which is crispier and faster. We have used influences from common design changes in Windows Operating systems and combined them with our distinctive look and feel to provide a fresh yet familiar work environment.



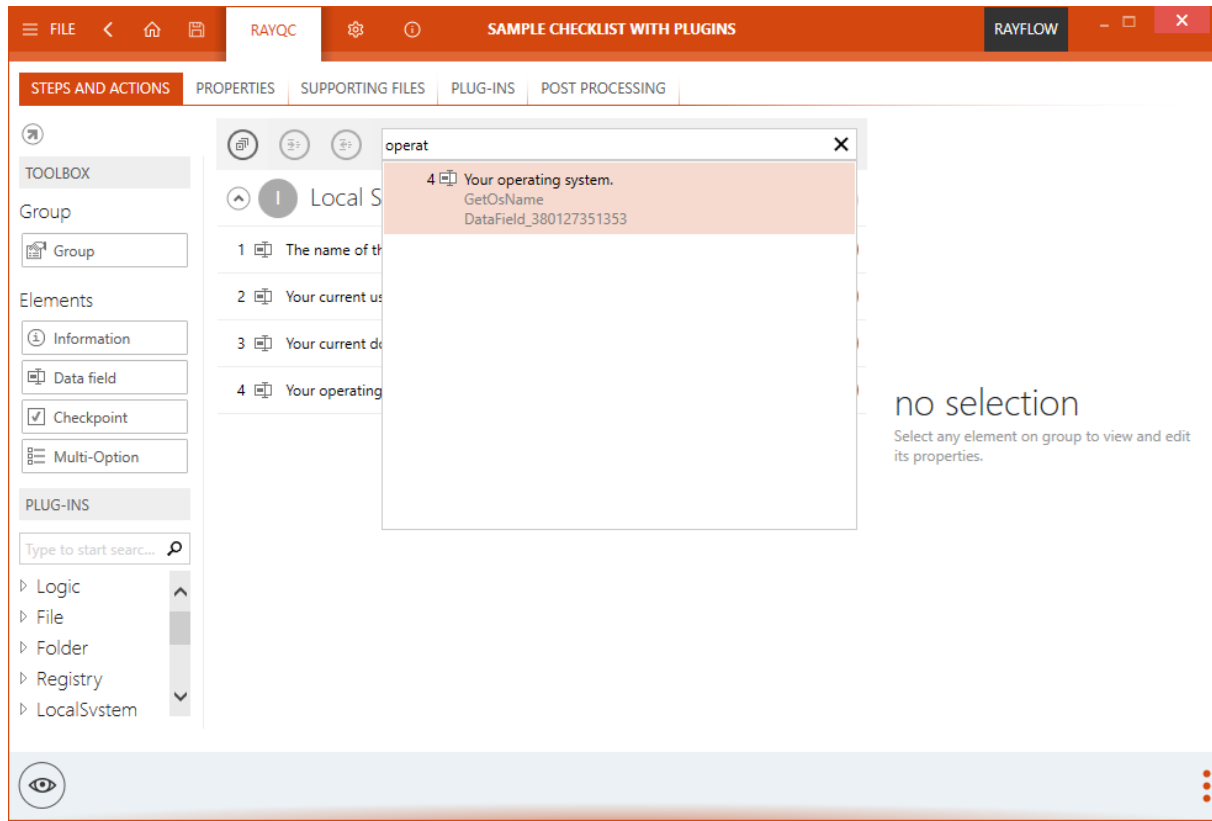
New plugins [RQC-692](#) [RQC-682](#) [RQC-677](#)

This version of RayQC contains new plugins to:

- Download a file from RayFlow.

- Read the content of a text file.
- Read from and write to RayFlow comment fields.

Quick search functionality in the checklist editor RQC-685



Other

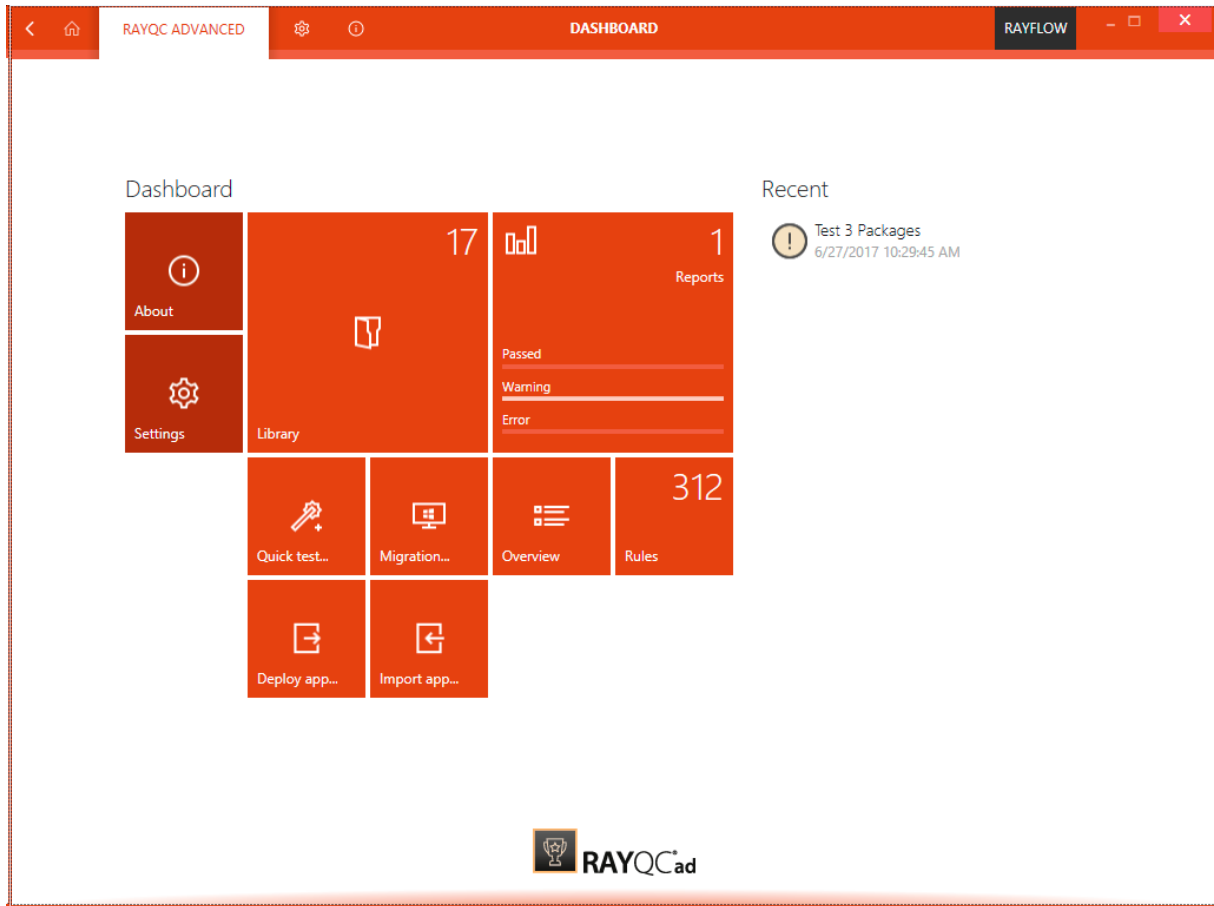
- **RQC-131** It is now possible to copy & paste into a new group
- **RQC-463** Support variables in report titles
- **RQC-657** Ability to copy elements and groups
- **RQC-652** Support for environment variables in File plugin functions
- **RQC-776** Added ability to disable warning messages when running all plugins
- **RQC-581** Show the element type icon in the checklist editor next to each item
- **RQC-579** Ability to copy single elements in the viewer mode to the clipboard
- **RQC-715** In checklist viewer, if a group has no elements then the expander is hidden
- **RQC-679** Extended options for checklist signing and extensions of certificate private keys
- **RQC-647** Restored the 'Jump to <element>' right-click context menu option for the editor and viewer

- **RQC-640** Added an 'Update' button in plugins and supporting files
- **RQC-642** Added "Collapse all" functionality
- **RQC-736** Redesigned the Report screen within Backstage menu
- **RQC-730** Redesigned recent items menu, added an ability to pin elements
- **RQC-724** Improved graphics of collapse/expand button in the viewer
- **RQC-707** Show warning if installed PowerShell version is not supported
- **RQC-656** Improved scrolling performance when dragging and dropping elements between groups within large checklists
- **RQC-494** Plugin function BooleanToString accepts empty fields and treats them as a "false" value
- **RQC-742** Improvement handling of conflicts between local and global native plugins
- **RQC-758** Stability and performance improvement to the Report Generator
- **RQC-772** Improved dropping of a new element in checklist editor
- **RQC-774** Improved naming of working directory in temporary location

RayQC Advanced

New User Interface and icons **RQC-773**

As with other Packaging Suite components, this release brings an overhauled user interface which is crispier and faster. We have used influences from common design changes in Windows Operating systems and combined them with our distinctive look and feel to provide a fresh yet familiar work environment.



New Rule-set for Windows Apps (UWP) RTS-2101

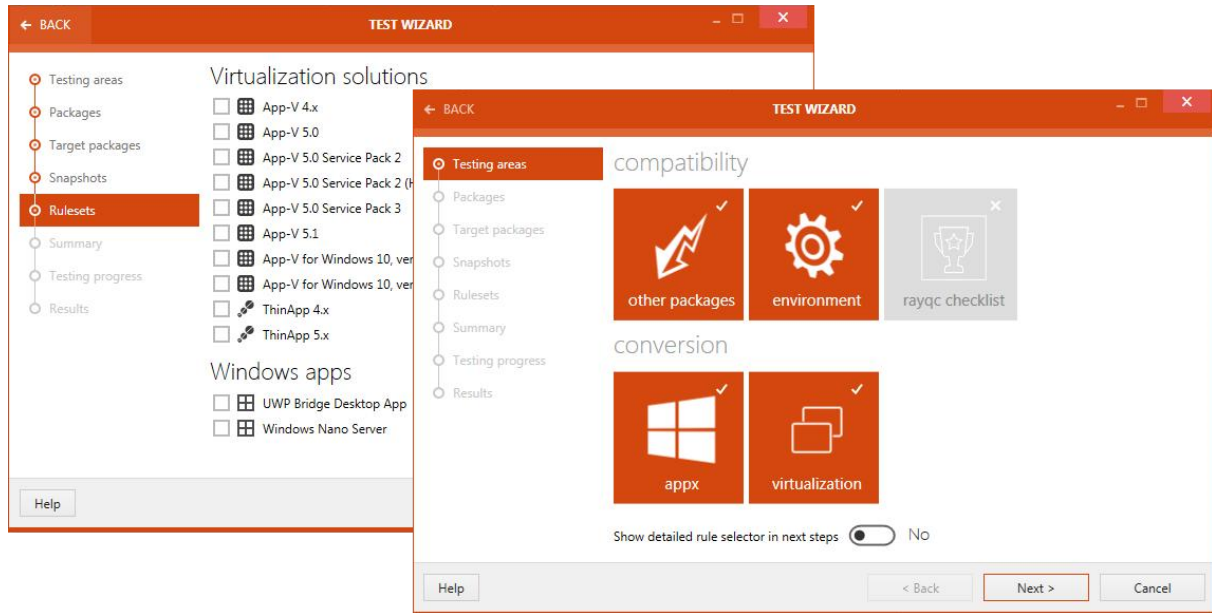
A new rule-set for testing whether packages can be converted to the UWP Bridge Desktop App format have been added to RayQC Advanced.

Separate rule-sets for various Windows 10 Editions (including Anniversary and Creators Update, etc.) RTS-2113

In releases prior to Packaging Suite 5.0, packages could only be tested against a generic Windows 10 rule-set. We have implemented and adjusted several rules so that it is now possible to target a specific Windows edition, including Windows 10 Creators Update.

Separate rule-sets for various App-V versions (including 5.0, 5.1, App-V for Windows 10, etc.) RTS-2115

In releases prior to Packaging Suite 5.0, packages could only be tested against a generic 5.x rule-set. We have implemented and adjusted several rules so that it is now possible to target a specific App-V version, including App-V for Windows 10 + classic 5.0/5.1 branches.



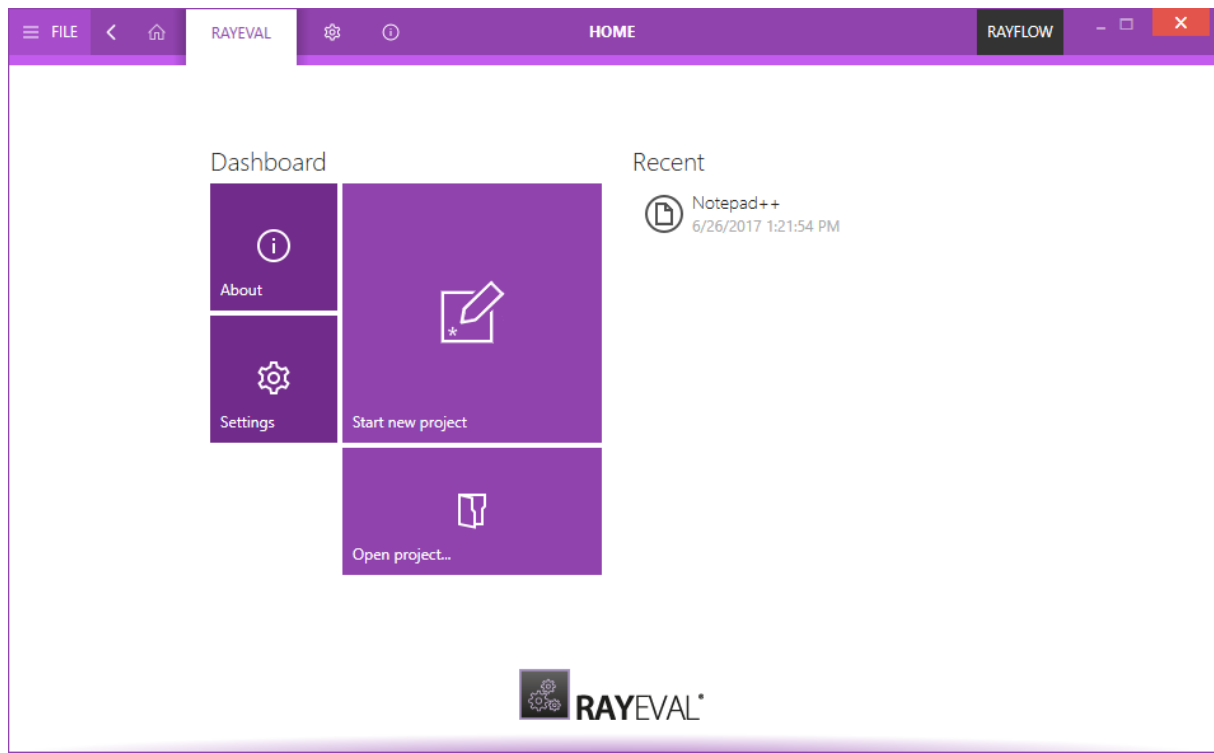
Other

- **RTS-1999** Multi-selection is now supported when fields from within *Settings > Custom Fields* are removed.
- **RTS-2107** The *RayQC checklist* option is now unchecked if no checklists are available.
- **RTS-2121** The *Use advanced mode* checkbox in the *Test wizard* has been changed into a *Yes/No* switch and the text explaining its function has been improved.
- **RTS-2099** Improved color palette for pie charts
- **RTS-2121** Changed label for “advanced mode” checkbox inside the *Test Wizard*

RayEval

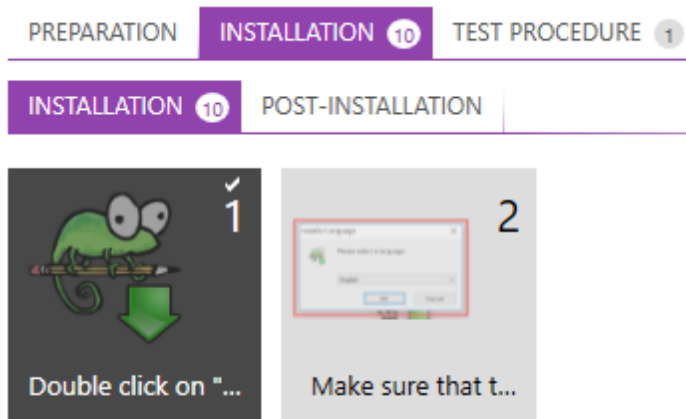
New User Interface and icons **RVL-316 RVL-338**

As with other Packaging Suite components, this release brings an overhauled user interface which is crispier and faster. We have used influences from common design changes in Windows Operating systems and combined them with our distinctive look and feel to provide a fresh yet familiar work environment.



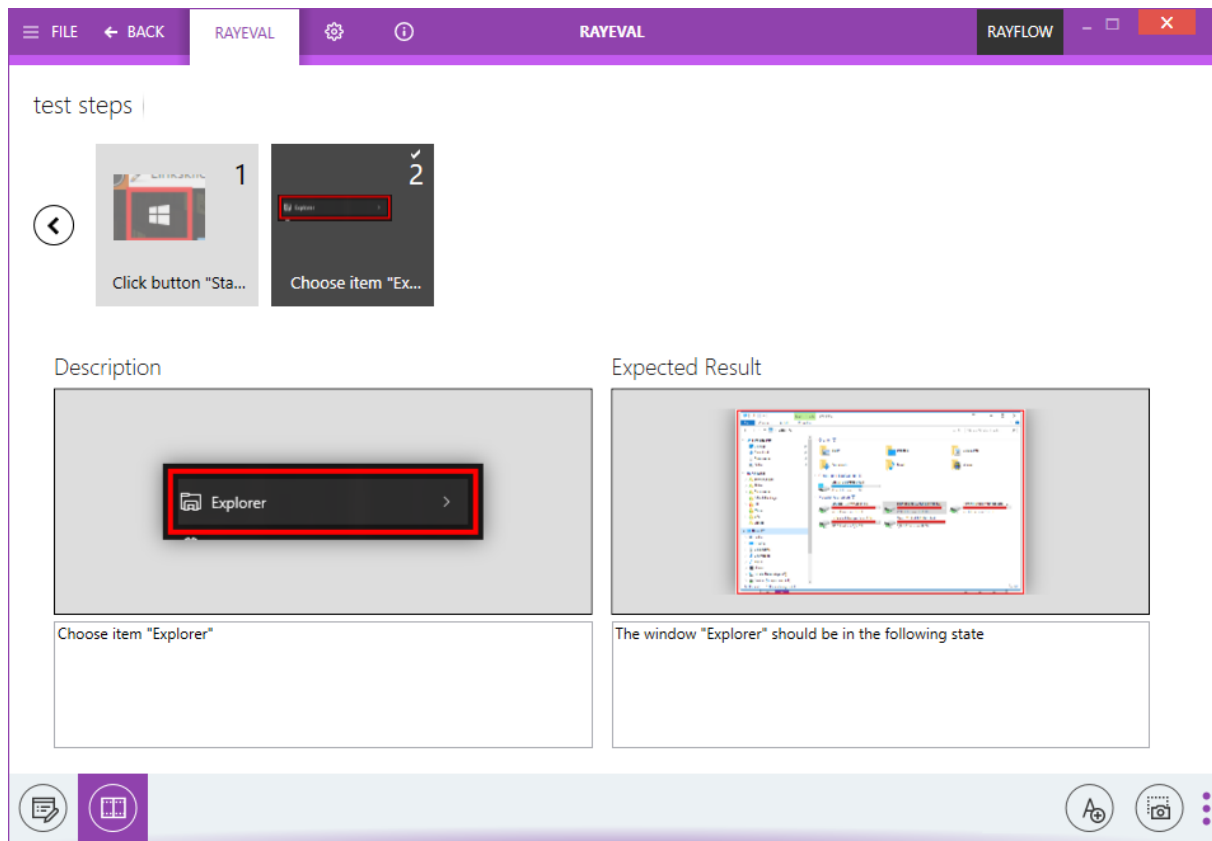
Counters added to the tabs row in the editor view RVL - 328

In this 5.0 release, tabs in the project editor use the default Packaging Suite style. Additionally, next to each item there is a small badge displaying how many steps are contained within. This allows users to quickly locate the content and provides a visual feedback about the content of the project.



Integration with TestRail RVL - 292

RayEval 5.0 can work with a special project type designed to cover test scenarios comparing required and actual results. The project can be exported to TestRail - a popular framework used to document various types of software tests.



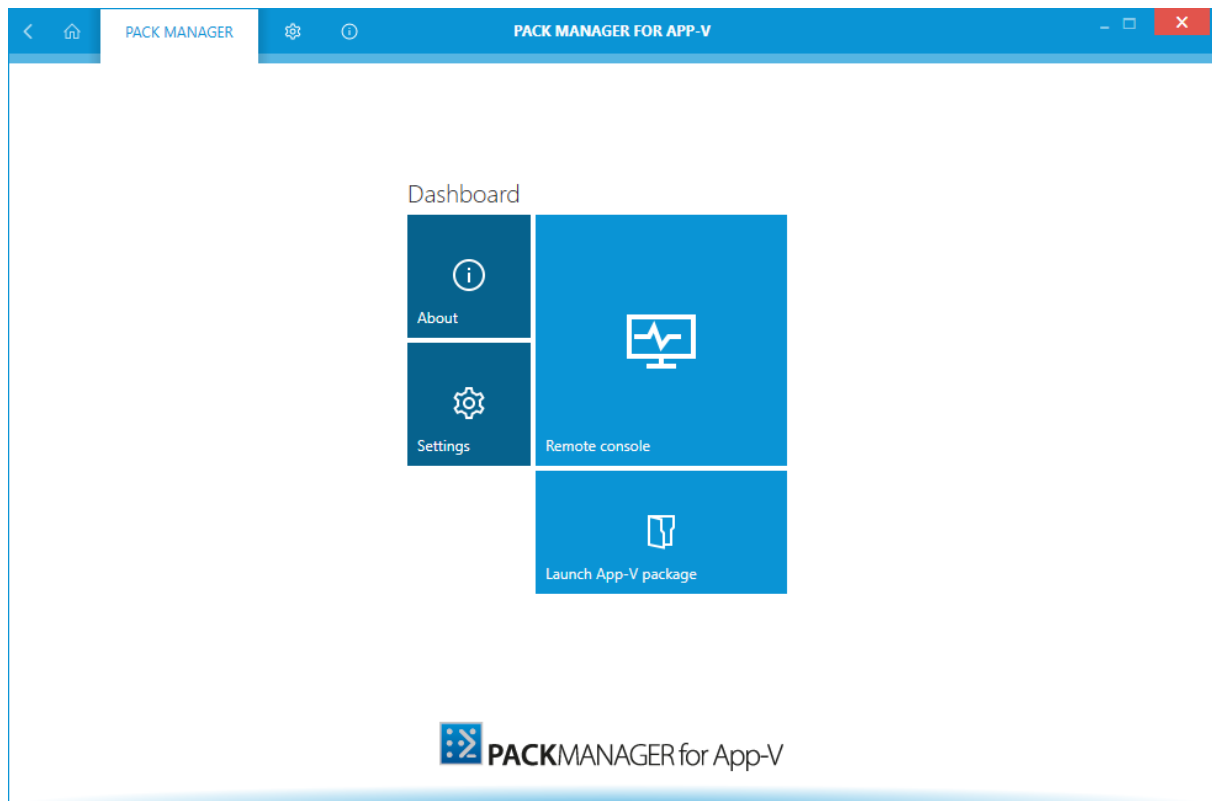
Other

- [RVL-315](#) Stability and performance improvements to PDF/DOCX report generator
- [RVL-300](#) Easy to use wizard-based creator for working with RayFlow from a standalone RayEval instance
- [RVL-308](#) Redesigned ABOUT tab with samples and help links

PackManager for App-V

New User Interface and icons [RMT-102](#)

As with other Packaging Suite components, this release brings an overhauled user interface which is crisper and faster. We have used influences from common design changes in Windows Operating systems and combined them with our distinctive look and feel to provide a fresh yet familiar work environment.



Other

- **RMT-97** Processes are grouped based on a parent-child relation
- **RMT-105** The publishing server grid screen is now hidden if nothing is selected

Resolved Issues

The following issues from the previous version of Packaging Suite have been resolved in this release:

RayPack

- [RPK-331](#) Tooltip with validation result text may overflow RayPack app boundaries
- [RPK-489](#) Edit component dialog, tab properties: misleading label "identifier"
- [RPK-514](#) Wrong link label for RayPack-defined standard actions
- [RPK-515](#) Adding new custom action from wizard should add the new CA to the sequence
- [RPK-930](#) Sequencing: Wrong link label in RayPack standard actions
- [RPK-1148](#) Missing Media table in MSI's generated from RCP without files leads to installation aborts
- [RPK-1237](#) Regardless which root element in the registry view is selected, ALL registry roots and sub keys are exported
- [RPK-1322](#) The default option when adding an exception is included but should be excluded
- [RPK-1392](#) When adding a registry operation in the components view, the currently selected hive should be used as the root
- [RPK-1627](#) Folders excluded during a session are still shown in the Build Options - Default folder list
- [RPK-1671](#) Import of WSI is not possible even though Wise is installed
- [RPK-1744](#) Crash to desktop on collision test execution on MSI
- [RPK-1832](#) Crash to desktop when opening an invalid .appx file
- [RPK-1975](#) When adding a prerequisite to RayPack after compilation an ICE03 error is present
- [RPK-1976](#) Properties list jumps after editing value (Designer View)
- [RPK-1988](#) RayPack imports wrong value from REG file
- [RPK-2157](#) Documentation regarding command lines need changing/reviewing
- [RPK-2158](#) An existing RCP file cannot be overwritten when the repackager is started by command line
- [RPK-2208](#) No warning when base MSI does not exist
- [RPK-2215](#) Failure when installing Raypack with Standalone license
- [RPK-2224](#) Reordering prerequisites via MSI table is not reflected in visual designer editor
- [RPK-2228](#) Impossible to save RPP after importing specific file
- [RPK-2231](#) Impossible to rename feature to one of its old names
- [RPK-2235](#) System search view is not refreshed after dropping tables (AppSearch and Signature)

- **RPK-2236** Project directory can contain forbidden character without validation errors in the capture wizard
- **RPK-2244** Application name is not validated for its length
- **RPK-2245** RPODBC file cannot be imported to RPP project
- **RPK-2246** ISM conversion is not working
- **RPK-2250** Importing many same file names in different subfolders is causing IDs of files with more than 256 characters
- **RPK-2264** Crash when changing certain folder properties in specific MSI file
- **RPK-2271** Registry key icon won't refresh after changing into KeyPath
- **RPK-2272** Pinning to start menu / task bar does not work in Windows 10 (conditions apply)
- **RPK-2274** Incomplete support for Chinese characters in PackRecorder snapshotting tool
- **RPK-2275** MSI error when starting TextReplacements Custom Action
- **RPK-2276** MSI error when starting installation of drivers
- **RPK-2284** When renaming a feature, its subtree is getting hidden until next reload of the project
- **RPK-2290** Wrong path when importing a file to RCP file
- **RPK-2296** Snapshotting HKLM+HKCU produces RCP with millions of reg entries
- **RPK-2303** List of resources incorrectly support multiselection mode
- **RPK-2304** When removing binary or icons items, referenced rows are not updated
- **RPK-2311** Newly created custom actions assigned at the beginning of sequence are shown last in dropdown
- **RPK-2319** Applying external merge module is not possible
- **RPK-2326** It is possible to specify invalid weith (for example negative numbers)
- **RPK-2331** Unresponsive application window when removing hundreds of folders at once in PackDesigner
- **RPK-2333** Some records describing relations are not applied correctly from RPMST files
- **RPK-2334** Cannot analyze the content of a MergeModule that has missing entries in Directory table
- **RPK-2342** Rename the prompt text shown in PackRecorder wizard for RCP editing
- **RPK-2351** Untranslated text in system selector for App-V configuration
- **RPK-2352** Cannot generate App-V package if there are not files in RPP/MSI project
- **RPK-2397** File -> Open "windows installer project" shows only .msi and .mst files
- **RPK-2398** No Merge Module can be added to a 7-zip package
- **RPK-2404** Upgrade wizard reads language information from a property instead of from Summary Information Stream
- **RPK-2406** Missing file extension in open file dialog
- **RPK-2410** Untranslated resources in inclusion/exclusion wizard

- **RPK-2413** When starting RayPack from command line with RayFlow context, the indicator is not reflecting it
- **RPK-2418** Untranslated English strings in German version of RayPack inside the CA wizard

PackBench

- **BEN-168** Installer ignores database connection settings
- **BEN-203** Wrong name used in warning prompt when the database is not accessible
- **BEN-230** No proper feedback when starting the product without correct license
- **BEN-231** Cannot install PackBench with a new database
- **BEN-266** Incorrect string in Workflow Properties for Boolean values

RayFlow Client

- **RF-4060** Client is not starting if any issues in detailed reports are present.

RayQC

- RQC-329 Inconsistent naming of empty datafield elements
- RQC-448 Adding / Removing DLL plugins does not work as expected
- RQC-524 Infinitely long cancelling process
- RQC-552 Summary Information stream is not read from MST
- RQC-570 Unneeded controls present on the last page of Admin Installer
- RQC-605 Wrong RayQC version in about tab
- RQC-615 A read only checklist has access to the editor
- RQC-618 Status of images in the Supporting Files tab is not refreshed
- RQC-636 After RF package has been selected via 'Post Processing > RayFlow Package', none of the RF plugin elements receive
- RQC-676 Incorrect margin around the label "Bypass reason"
- RQC-688 Page "Create report" is shown even when a checklist is closed
- RQC-693 Plugin Setfield change non-existing fields by multioption datafield.
- RQC-698 By editing element function groups are not expanded
- RQC-699 Red frame disappear to quickly after clicking on edit element function
- RQC-700 There is shown no information about element after clicking on Edit element function
- RQC-701 Application freezed after expanding groups
- RQC-703 Wrong example in User Guide by StringtoString plugin
- RQC-704 StringTostring convert only single words and characters
- RQC-705 Low quality of RayQC logo in PDF report
- RQC-709 Missing string in resources for the default report name
- RQC-717 IntelliSense when formatting description works only after pressing space
- RQC-728 Red frame by installation folder path in Troubleshooting tab
- RQC-729 Context menu "Edit element" does not work properly
- RQC-731 Hide element is not shown after clicking on View element button
- RQC-732 Crash of the main window when adding a new element on a minimum resolution
- RQC-733 Inconsistent paths for logs and configuration
- RQC-737 Duplicated icons for checklist verification
- RQC-738 Blank last step in RayQC installer

- RQC-739 Inconsistent application margins in various places
- RQC-740 It is possible to import the same plugins under another name in Plugins tab
- RQC-741 It is possible to access the Plugin Tab after opening a checklist
- RQC-743 No error message is shown when using unsupported PowerShell version
- RQC-746 Incorrect selection of first failed element
- RQC-747 Application crashes after adding a plugin form desktop.
- RQC-752 Wrong display of the SUPPORTING FILES tab on low resolutions
- RQC-762 Application crashes after copying and pasting a group element
- RQC-763 Cancel button by running GetCollisionTarget does not do function
- RQC-766 The "Recent" header is always shown, even if there are no recent items available
- RQC-768 Bad quality of icons in RayQC PDF report
- RQC-769 No "Information" menu item in backstage menu

RayQC Advanced

- RTS-1249 The drag and drop label description in the software library is invalid
- RTS-1873 Cut option is missing in multi-selection lists
- RTS-1902 The package icons of web applications stay gray after testing
- RTS-1993 Destination folder is not remembered by the report wizard
- RTS-1936 When testing multiple packages with RayQC checklists, sometimes an error message is displayed
- RTS-1993 The *Report* wizard does not remember the destination folder
- RTS-2001 Custom fields imported from RF are not populated with RF data
- RTS-2063 There are wrong items in the overview screen for RayQC checklists
- RTS-2066 The progress bar for package import does show a wrong progress
- RTS-2067 Filtering for multiple imports does not work
- RTS-2074 The type of an MSI is not updated after changing it in *Package Properties*
- RTS-2075 The deletion of folders in the *Import* wizard is inconsistent
- RTS-2079 The test results for checklists are incorrect
- RTS-2085 It is possible to import the same MST file twice
- RTS-2093 It is possible to select default fixes for issues that cannot be repaired
- RTS-2104 The MSI wizard still calls RayUpdater even though an existing database of the the latest version is targeted

- **RTS-2106** There is a random error at the startup of the application
- **RTS-2110** The Items *Deploy app* and *Import app* are not translated
- **RTS-2114** An inconclusive error is shown on startup
- **RTS-2122** File names and other information are not wrapped in the exported PDF file of the Library View
- **RTS-2125** Column width cannot be changed after restoring the grid's layout
- **RTS-2127** Missing fix information on chart in created PDF Report
- **RTS-2133** Wrong examples for virtualization tests from command line

RayEval

- **RVL-270** There is no documentation regarding the standard properties (@SOURCETYPE)
- **RVL-279** Not the same information by giving order number
- **RVL-301** After the button NEW is clicked for a second time, the backstage is open on the Information page instead of on the New page
- **RVL-303** When started from a command line (using RayFlow Client or PackBench) the main RayEval window is not opened in the foreground
- **RVL-306** Minimal height of the window is cutting the content
- **RVL-307** Settings screen contains untranslated item "Hotkeys"
- **RVL-319** Cannot capture anything if opening an existing projects
- **RVL-320** Bottom bar is not animated in the settings screen
- **RVL-342** Missing cancel button in a prompt message when leaving unsaved settings in the Settings screen

PackManager for App-V

- **RMT-107** Additional connection is added to recent list after connecting to remote computer
- **RMT-109** Recent header is visible even when there are no recent elements

Migration

RayPack / PackBench

Upgrading the RayPack Application

General upgrade preparations

RayPack 5.0 is delivered as part of the Packaging Suite Installer. In order to install it safely:

1. Download the Packaging Suite Installer 5.0 from the Raynet resource repository.
(If you have not already received credentials, please contact the Raynet support team via the [Raynet support portal](#) to receive them via the ticket system).
2. Copy all files that need to be kept for later reuse or look-up (such as resources of global external plugins, log, settings and config files, the `*.rs1` file, etc.) to a temporary transfer directory outside of the Packaging Suite application directory (where they usually reside).
3. *(only if PackBench is installed)* Make a backup of the SQL Server database which is used by the PackBench.
4. Execute the Packaging Suite Installer and work through the setup routine. The installation of RayPack 5.0 using the Packaging Suite Installer is described in the *Packaging Suite Installer User Guide*.

**Note:**

If upgrading PackBench, ensure that a **running** SQL server is available before starting the migration/installation.

Migration from RayPack 4.1

Some settings for Virtualization Pack have been moved from per-project setting to a new global place which is profile-dependent. Some minor old setting which were already part of the profile may be lost when opening a profile created by RayPack 4.1 and older.

There are no other breaking changes.

Migration from older versions

Refer to the Raynet Knowledge Base for information about migration paths from version 4.0 and older.

Troubleshooting

If you experience abnormal symptoms (like program not starting, missing features, etc.) after the upgrade, we highly recommend to perform the clean installation of RayPack / PackBench 5.0. In order to do that, please perform the following steps:

- 1) Locate your product order number. If you can't find it, contact our support.
- 2) Make a backup of your license file (by default installed to <ProgramData>\Raynet\Licenses\RayPack*.rsl).
- 3) Uninstall the previous version of RayPack / PackBench.
- 4) Delete the content of the installation folder (by default C:\Program Files (x86)\RayPack, C:\Program Files (x86)\RayPack\PackBench).
- 5) Install RayPack / PackBench 5.0.
- 6) Start the main application (`raypack.exe` or `packbench.exe` respectively) to re-activate RayPack / PackBench again.

If the issues are not resolved after performing the steps described above, the following steps will revert the profile to the original state:

- 7) Close RayPack / PackBench.
- 8) Backup and then remove the content of the following folders:
 - Configuration files
 - For RayPack: %AppData%\RayPack
 - For PackBench: %AppData%\RayBench and %ProgramData%\RayBench
 - AppData\Local\Raynet
 - Optionally, you can also revert the PackPoint to the default state by removing the PackPoint folder (standard installation path is C:\RayPack\PackPoint).
 - For PackBench, you may try to install a new database with sample data to see if the problem persists.
- 9) Start RayPack / PackBench again.

If the procedures given above did not resolve the issue, please contact our support.

RayFlow Client

Upgrading the RayFlow Application

General upgrade preparations

RayFlow 5.0 is delivered as an MSI software package. In order to install it safely:

1. Download the MSI package for RayFlow 5.0 from the Raynet resource repositories.
(If you have not already received credentials, please contact the Raynet support team via support@raynet.de to get them via email)
2. Copy all files that need to be kept for later reuse or look-up (such as `RayFlow.exe.config` for proxy settings, `dashboard.xml`)
3. Execute the RayFlow 5.0 MSI package and work yourself through the setup routine.

Adjusting the newly installed RayFlow instance

1. Define config files and settings according to the old system state.
2. Launch RayFlow.
3. If there are issues regarding broken or missing functionality, please feel free to contact the Raynet support team via support@raynet.de.

RayQC / RayQC Advanced

Upgrading the RayQC Application

General upgrade preparations

RayQC 5.0 is delivered as part of the Packaging Suite Installer. In order to install it safely:

1. Download the Packaging Suite Installer 5.0 from the Raynet resource repositories.
(If you have not already received credentials, please contact the Raynet support team via the [Raynet support portal](#) to get them via the ticket system)
2. Copy all files that need to be kept for later reuse or look-up (such as resources of global external plugins, log, settings and config files, the `*.license` file, the `*.rsl` file, etc.) to a temporary transfer directory outside the Packaging Suite application directory (where they usually reside).
3. Make a backup of your SQL Server database which is used by the RayQC Advanced Module.
4. Execute the Packaging Suite Installer and work yourself through the setup routine. The installation of RayQC 5.0 using the Packaging Suite Installer is described in the Packaging Suite Installer User Guide.

**Note:**

If upgrading RayQC Advanced, ensure that a **running** SQL server is available before starting the migration/installation.

If an older version than RayQC 2.1 is installed on the target machine

If an older version than RayQC 2.1 is already installed on the target machine there are two different ways to migrate to the new RayQC 5.0.

- Install RayQC 5.0 and keep the installation of RayQC 1.5 or Packaging Suite 2.0. They will remain untouched by the installation of RayQC 5.0.

General upgrade preparations

RayQC 2.1 is delivered as an MSI software package. In order to install it safely:

1. Download the MSI package for RayQC 2.1 from the Raynet resource repositories.
(If you have not already received credentials, please contact the Raynet support team via support@raynet.de to get them via email)
2. Copy all files that need to be kept for later reuse or look-up (such as resources of global external plugins, log, settings and config files, the `*.license` file, etc.) to a temporary transfer directory outside the RayQC application directory (where they usually reside).
3. Remove the old RayQC installation manually.
4. Execute the RayQC 5.0 MSI package and work yourself through the setup routine. The installation of RayQC 5.0 is described in the RayQC 5.0 Installation Guide.

Adjusting the newly installed RayQC instance

1. Launch RayQC.
2. Define `.config` files and settings according to the old system state.
3. Test the new settings and configurations by creating and evaluating checklists, communicating with RayFlow, reviewing log files, etc.
4. If there are issues regarding broken or missing functionality, please feel free to contact the Raynet support team via support@raynet.de.

RayUpdater

During the migration, if database changes are necessary, these will be done automatically. While executing the setup routine, RayUpdater, the tool used for a safe migration of the data, will be launched automatically and perform all necessary steps without the necessity of any user input.

Upgrading RayQC Files

The file formats RQCT and RQCP Raynet introduced in RayQC 1.5 and have been massively reworked to match the needs of the modernized application logic. Therefore, it is not possible to simply reuse templates and projects that have been generated with RayQC 1.5 in the current version 5.0.

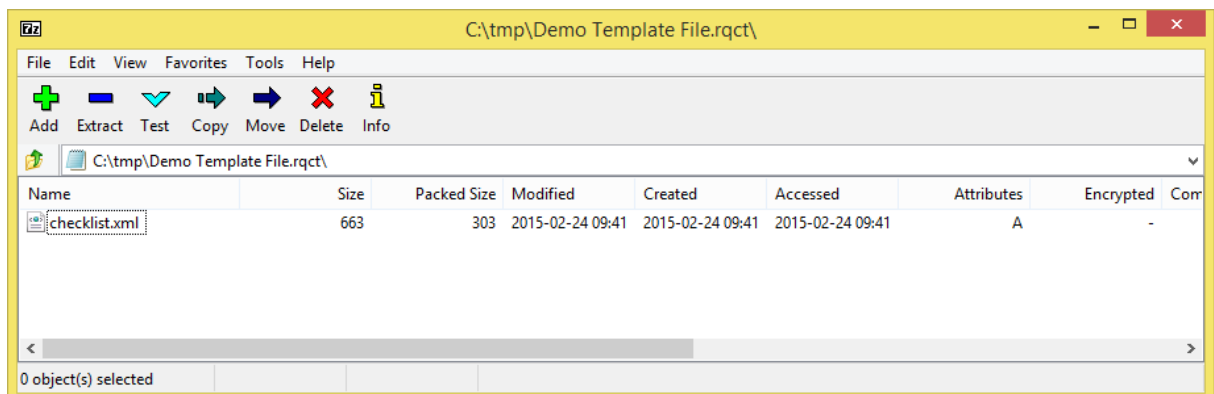
The RQCT files used in RayQC 5.0 are no longer XML structures, but ZIP containers that contain the XML checklist file (`checklist.xml`) as well as all other resources required to run the checklist on RayQC: plugins, help files, images, etc. are stored within dedicated directories wrapped in the ZIP container.

Additional files that represent the current project status of a checklist evaluation (`state.xml`), post-processing settings and signature information, are added when a template is saved as project file RQCP.

Knowing about these changes makes it quite obvious that there must be some manual steps in any kind of checklist transition from version 1.5 to 5.0. Once this is done, the following standard procedure is a valid option for their transition to 5.0:

To transfer a RayQC 1.5 RQCT to the current 5.0 format, users have to run the following procedure:

1. Copy the original RQCT file to a temporary working directory.
2. Change the file
 - a. name to `checklist`
 - b. extension from `.rqct` to `.xml`
3. Create a new ZIP that contains the `checklist.xml` file. Name the ZIP container according to the old checklist file name, and set the file extension to RQCT.
4. The result of steps 1-4 has to be a zip container with the file extension `*.rqct`, that contains a `checklist.xml` file with the original checklist structure.



5. Open this file in RayQC 5.0.
6. It is most likely, that the validation procedure run during checklist loading states issues with the XML source structure. In this case, a dialog is displayed, revealing details about invalid areas with a click on the more button.

Open the `checklist.xml` file from within the RQCT container, and correct all mentioned issues to establish an XML file that is valid according to the `ChecklistSchema.xsd` demanded by RayQC 5.0.

7. Save the changes to the `checklist.xml` file, and re-try to open the RQCT container with RayQC.
8. Repeat steps 6 & 7 until the checklist is successfully validated and opened by the application.

Once this level is achieved, all upcoming changes may be executed directly within the checklist editor. Please refer to the User Guide section about editing checklist templates for further instructions.

**Be aware:**

Checklists with extended plugin and condition usage may be quite difficult to upgrade manually, since both parts of the system logic have undergone revolutionary changes during the development of RayQC 5.0. Therefore, these checklists are recommended to be recreated from scratch.

Also be aware:

There is no direct upgrade path for RayQC projects from product versions prior to 1.5.

Please contact your RayQC service consultant, or the Raynet support team to get information about possible forms of assistance for any required upgrading measures.

RayEval

Upgrading the RayEval Application

General upgrade preparations

RayEval 5.0 is delivered as an MSI software package. In order to install it safely:

1. Download the MSI package for RayEval 5.0 from the Raynet resource repositories.
(If you have not already received credentials, please contact the Raynet support team via support@raynet.de to get them via email)
2. Copy all files that need to be kept for later reuse or look-up to a temporary transfer directory outside the RayEval application directory (where they usually reside). This is important for all files that have been customized like the project configuration file (`Projectconfiguration.xml`), the export plugins configuration file (`PluginTemplates.xml`), and the folder which contains all the template documents (`<INSTALLDIR>\Plugins\Templates\`).
3. Execute the RayEval 5.0 MSI package and work yourself through the setup routine. The installation of RayEval 5.0 is described in the RayEval 5.0 User Guide.
4. After the installation has been finished, copy the files that have been backed-up to their previous locations.

System Requirements

Hardware Requirements

This section lists the minimal hardware requirements for devices running Packaging Suite.

Minimal

- Screen resolution: 1024 x 768 pixels
- Color settings: 16 bit
- RAM: 2GB
- Disk space: 10GB

Recommended

- Screen resolution: 1280 x 1024 pixels
- Color settings: 32 bit
- RAM: 4GB or higher
- Disk space: 100GB or more

**Note:**

The installation of the Packaging Suite framework itself requires about 400MB of disk space. The amount of additional space needed depends on the volume of your packaging material and the location of the data store.

Supported OS

The following operating systems are supported for the installation and running of Packaging Suite.

- Windows Vista
- Windows 7
- Windows 8
- Windows 8.1
- Windows 10
- Windows Server 2008 SP1-SP2
- Windows Server 2008 R2
- Windows Server 2012
- Windows Server 2012 R2
- Windows Server 2016

**Note:**

Packages generated with Packaging Suite have their own, individual set of target OS. The list above is not designed to display which target OS are reachable by Packaging Suite packages.

Prerequisite Software

- .NET 4.5 Client & Full for Windows XP up to Windows 7 systems (both 32-bit and 64-bit)

General requirements

- In order to use RayFlow functionality directly from Packaging Suite components, a running RayFlow server has to be accessible.
- In order to use *RayManageSoft* integration, *Management Console* has to be installed on the machine on which RayPack is running.

RayPack

- In order to use Quality features (checklists, compatibility, virtualization, and conflict testing) RayQC / RayQC Advanced have to be installed on the local machine.
- Contact our Support / Sales to obtain a license for the PackCommander module.
- In order to create SWV packages, the Symantec Workspace Virtualization Agent 7.5 has to be installed on the packaging machine.

- In order to create Thin-App packages, the VMware ThinApp has to be installed on the packaging machine.

**Note:**

It is recommended to install Packaging Suite on a virtual machine. This allows the packaging machine to always be in a "clean state" and ensures that any packages created are not "polluted" with information (files, registry keys etc.) from other sources other than the package that is to be packaged.

PackBench

- Depending on the configuration of Packaging Suite, additional tools and/or components of RaySuite may be required. To get more information about the command line usage of these tools refer to the respective *User Guides* of these products.
- For PackBench: SQL Server, version 2008 or higher. Express editions are also supported.

RayQC

- In order to install and use the product, PowerShell 3.0 or newer must be installed..

RayQC Advanced

- In order to install and use the product, SQL Server version 2008 or higher. Express editions are also supported.

Additional Information

Visit www.raynet.de for further information regarding the product and current community incentives. It is also recommended to take a look at additional resources available at the Knowledge Base for Raynet products: <https://raynetgmbh.zendesk.com/hc/en-us>.

Raynet is looking forward to receiving your feedback from your Packaging Suite experience. Please contact your Raynet service partner or write an e-mail to sales@raynet.de to add your ideas or requirements to the Packaging Suite development roadmap!

Our Raynet support team gladly assists you on any question or issue you encounter regarding Packaging Suite. Feel free to sign in and open incidents via our [Raynet Support Panel](#).



Raynet GmbH

Technologiepark 20
33100 Paderborn, Germany

T +49 5251 54009-0

F +49 5251 54009-29

info@raynet.de

support@raynet.de

www.raynet.de