



•rayNET



RayFlow®

RayFlow Web 4.1
Release Notes

30.11.2016

Release Notes RayFlow Web 4.1



**Copyright © Raynet GmbH (Germany, Paderborn HRB 3524). All rights reserved.
Complete or partial reproduction, adaptation, or translation without prior written permission is prohibited.**

Release Notes RayFlow Web 4.1

Raynet and RayFlow are trademarks or registered trademarks of Raynet GmbH protected by patents in European Union, USA and Australia, other patents pending. Other company names and product names are trademarks of their respective owners and are used to their credit.

The content of this document is furnished for informational use only, is subject to change without notice, and should not be construed as a commitment by Raynet GmbH. Raynet GmbH assumes no responsibility or liability for any errors or inaccuracies that may appear in this document. All names and data used in examples are fictitious unless otherwise noted.

Any type of software or data file can be packaged for software management using packaging tools from Raynet or those publicly purchasable in the market. The resulting package is referred to as a Raynet package. Copyright for any third party software and/or data described in a Raynet package remains the property of the relevant software vendor and/or developer. Raynet GmbH does not accept any liability arising from the distribution and/or use of third party software and/or data described in Raynet packages. Please refer to your Raynet license agreement for complete warranty and liability information.

Raynet GmbH Germany
See our website for locations.

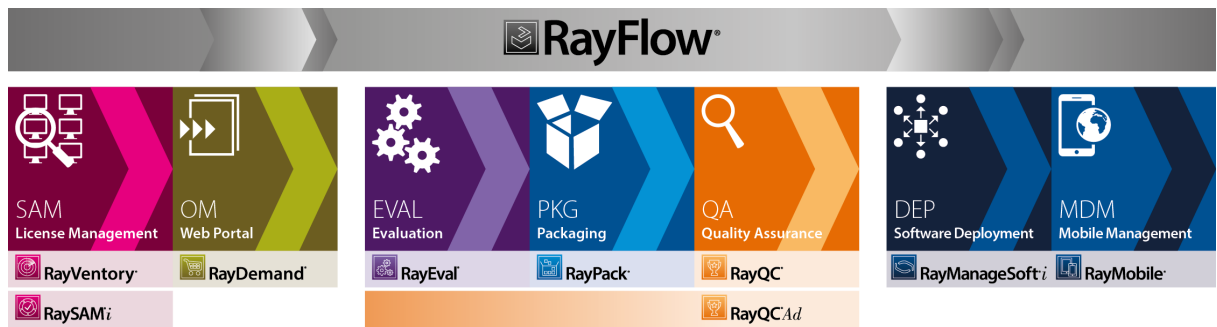
www.raynet.de

Table of Contents

Introduction	4
What's New?	5
Improvements & Enhancements	7
Resolved Issues	9
Migration	16
System Requirements	26
Additional Information	28

Introduction

This release of RayFlow Web 4.1 provides new features, functional improvements, as well as functional improvements and fixes for known issues from prior versions. RayFlow Web is available as a standalone product as well as it can serve as the backbone for the RaySuite Enterprise Solution.



Enterprise Application Lifecycle Management

Visit www.raynet.de for further information regarding the product and current community incentives.

Raynet is looking forward to receiving your feedback from your RayFlow Web experience. Please contact your Raynet service partner or write an e-mail to sales@raynet.de to add your ideas or requirements to the RayFlow Web development road map!

What's New?

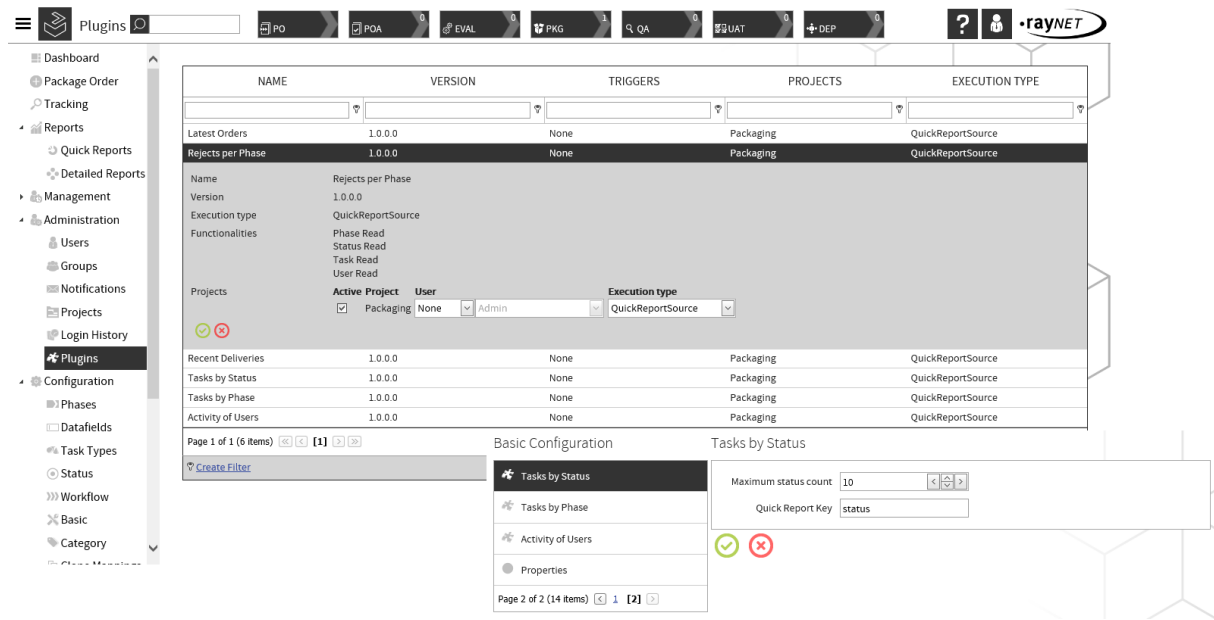
The following chapters contain an overview of the improvements, resolved issues, and the new features that are part of the new release of RayFlow Web 4.1.

Floating Licenses

RayFlow Server now supports the concurrent usage licensing model, commonly known as "Floating License Model".

Plugins have been added to RayFlow [RF-3248; RF-3277; RF-3278; RF-3317; RF-3368; RF-3395]

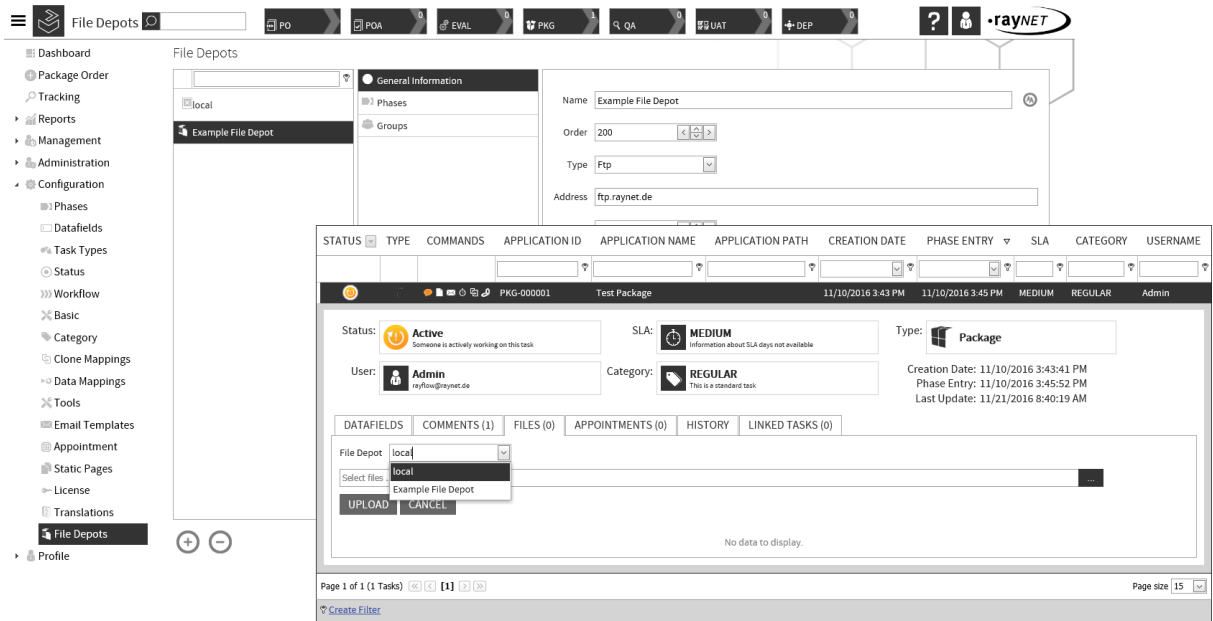
With the release of RayFlow 4.1 plugins have been added to RayFlow.



At the moment, there are five different kinds of plugins. Triggered plugins, direct plugins, batch plugins, task attached plugins, and the Quick Report Sources where the latter are replacing the old quick reports.

File Depots [RF-3347; RF-3351; RF-3352]

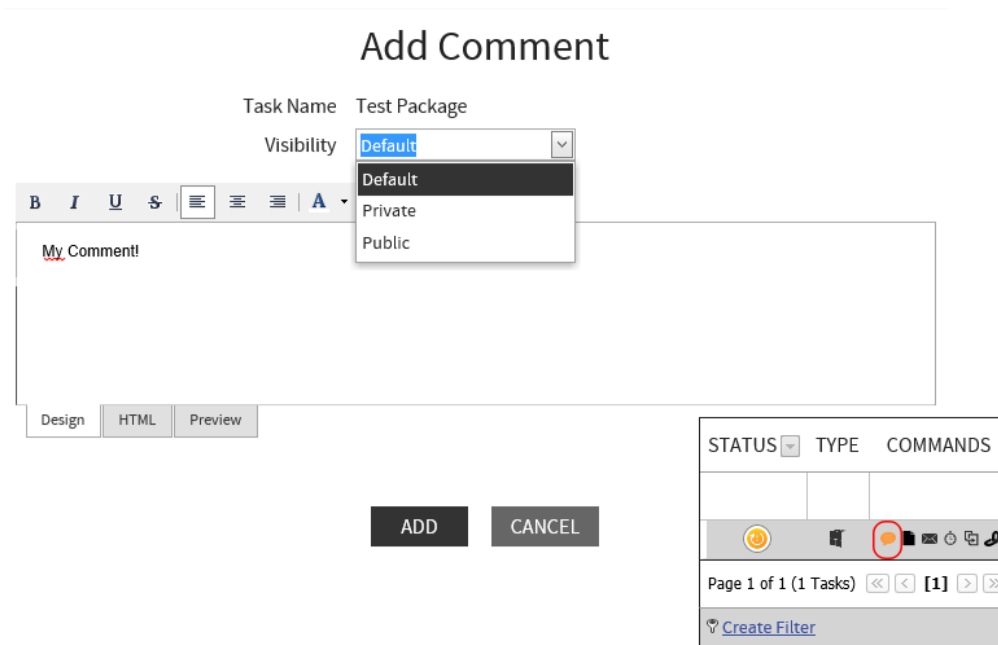
With File Depots, an option to upload and download files to and from locations different than the IIS server Rayflow is running on, has been added.



The new target location for uploading files can be easily selected using a new dropdown box that is available when selecting to upload a file. Previously, it was not possible to upload files to locations other than the hosting webserver.

Visibility of Comments [RF-3171]

There are now different visibility options for comments. Comments can now be set to private, default, or public visibility.



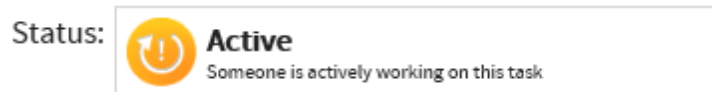
This means that users can decide if a comment is just visible for themselves, for those who have access to the phase where the comment is located, or to everyone who can view the task even though the comment was made in a phase they have no view permissions for.

Performance Improvements [RF-1084; RF-2758]

The overall performance of RayFlow as well as the performance in the available views has been significantly improved.

Task lock changes [RF-3260; RF-3261]

There are changes to how task lock works. Tasks are now only locked if users are making changes to a task.



Furthermore, users cannot steal task from other users with the same permission level anymore. Administrative users on the other hand can now release and steal locks from all users which have a permission level that is not higher than their own and can therefore also steal or release locks from users with the same permission level.

Improvements & Enhancements

- **RF-571** The Rejects quick report now only lists those tasks that have been rejected and are still in the phase that the rejection action moved them to and has an option to alternatively show how many rejections did occur per phase.
- **RF-2134** It is now possible to copy holidays when copying, exporting, or importing a project.
- **RF-2397** Phases permissions have been improved to work like expected.
- **RF-2653** Localization for user defined content has been added to RayFlow. Users can now define names and texts in multiple languages.
- **RF-3141** SLA calculation jobs now support cancellation and progress update editing the periodic interval of repetitions now updates the server configuration properly.
- **RF-3152** An example tool configuration for RayQC, RayQC Advanced, RayEval, and RayPack has been added as default to the standard **Packaging project** after RayFlow has been installed.
- **RF-3218** Default values have been added for datafields of the type dropdown.
- **RF-3264** The base URL usage for notifications has been improved.
- **RF-3296** If a project contains multiple status of the type **Open**, the one with the lowest order number is now used for creating tasks.
- **RF-3301** The error message for a too long project name value has been improved.
- **RF-3311** Descriptions of the datafields have been added to the webservice object domain model.
- **RF-3332** After selecting the **Select all** dropdown field option and then unchecking one or more dropdown menu items, the **Select all** option does not automatically get deselected.

-
- **RF-3376** The webservice now allows the retrieval of phase permissions and task permissions for the current user.
 - **RF-3471** An active control for the file depot configuration has been added.

Resolved Issues

The following issues from the previous version of RayFlow Web have been resolved in this release:

- **RF-482** After uploading and then downloading a file the downloaded file is empty.
- **RF-801** The `ApplicationLanguage` column name is not visible within the SSRS reports.
- **RF-820** The web interface tracking data page sometimes only has the username and datetime stamp.
- **RF-1324** The appointment view does not contain information about created appointments.
- **RF-1566** After changing user assignment the moved user is not selected.
- **RF-1916** If the **My Profile** page is locked to a user, they have no possibility to get rid of the initial password warning.
- **RF-1966** There are issues with unique datafields.
- **RF-2014** Email field in **My Profile** has no red background color on mandatory validation.
- **RF-2050** Mixed multi dropdown values are shown in the detailed reports.
- **RF-2067** Features are available with every license even though they are unlicensed.
- **RF-2101** Clicking on the **Show report** button of a standard report causes a never ending loading phase on a newly opened report browser tab.
- **RF-2109** Typo in log file entry "onfigurationController".
- **RF-2183** CSV import action does not utilize the default values of a given datafield.
- **RF-2412** Some translations are missing or need to be reviewed.
- **RF-2490** New events with an already existing name can be created.
- **RF-2524** The wheel does not stop to rotate after saving a comment in the phase view.
- **RF-2527** Text for "**Send this appointment via mail**" should be different.
- **RF-2529** The confirmation message for editing an appointment is displayed after changing the page instead of after editing the appointment.
- **RF-2538** Datafield configuration cannot be called anymore if number that is too big has been typed into the order field.
- **RF-2550** Multiple clicks on the create button [+] lead to multiple custom filters.
- **RF-2558** The **My Profile** form is always submitted, even if the client-side validation failed.
- **RF-2576** A Javascript error causes the **newtask** view to stop and the **newtask** view only works again after reloading the page.
- **RF-2600** Local datafields that are hidden in the **Create** phase when cloning tasks are visible in the **Column Chooser**.
- **RF-2615** When opening the **Datamappings** page, it is not possible to click anything within the grid.

- RF-2686 Hidden datafields and groups are shown in the Manager view.
- RF-2696 Hidden datafields and groups are shown in the User view.
- RF-2698 The All-Edit-Administrator can create appointments for users on user-hidden phases.
- RF-2734 Change status has to be disabled for Edit-User on foreign task.
- RF-2738 The full length of phase titles is not displayed, 4 characters are missing.
- RF-2749 Profile properties cannot be viewed for a project.
- RF-2763 Email notifications are sent multiple times for the same event.
- RF-2787 The order of the **Close** and the **Apply** buttons in the **Phase** view needs to be changed.
- RF-2826 Project cannot be cleaned up.
- RF-2834 Unable to create a new SLA.
- RF-2875 Users who only get notifications from the First Phase also get emails for uploaded files.
- RF-2943 All users with **View** permission, no matter if privileged or unprivileged, can change types.
- RF-2946 The Guid instead of the type name is shown when exporting a file using the function in **My Tasks**.
- RF-2948 It is possible to create empty filter in My Tasks.
- RF-2958 The Status, User, SLA, and Category dropdown menus keep the selected values after clicking on cancel.
- RF-2967 Multiple clicks on the create button (+) create multiple entries.
- RF-2978 All datafields remain editable despite of their configuration.
- RF-2992 After saving the layout for a user HTML-code is shown.
- RF-3001 **Clone Task Order** shows an unhandled ArgumentException.
- RF-3003 Deactivated SLA cannot be activated because the name validation says that the name already exists.
- RF-3006 Newly added properties are not validated for already existing keys in the projects view.
- RF-3009 If root raises other users to root group members in **Default project** context, this role is not respected by other projects.
- RF-3015 The column with buttons in the grid is moveable in email templates.
- RF-3030 The file upload in the create phase fails.
- RF-3037 Internal error occurs on creating custom filter if no datafield exists.
- RF-3039 It is possible to change the time of an appointment in the **Timeline** tab of the **Calender** view.
- RF-3041 The status change for **Edit User** on foreign tasks is handled differently by web and client.
- RF-3043 In the **Appointment** tab the appointments are not listed in the correct order.
- RF-3045 The first **Create Job** button is moved after the job table is expanded.
- RF-3049 In edit-boxes in the task details and command button context the cursor sometimes jumps back to

the beginning position of a line automatically.

- RF-3057 No notifications are sent on the **Status changed** event.
- RF-3058 Creating an SLA without a name leads to a server error.
- RF-3068 Assigning groups to a datafield does not work in phase configuration.
- RF-3077 Importing a project fails due to **FOREIGN KEY** constraint "FK_EmailTemplates_Language".
- RF-3081 Notifications on datafield change are send multiple times.
- RF-3102 If resetting the layout and adding a column afterward, the system stops working.
- RF-3108 There are multiple functional problems in the **Translations** configuration.
- RF-3109 Phases translations are partially not used.
- RF-3110 SLA translations are partially not used.
- RF-3111 Category translations are partially not used.
- RF-3112 Status (event) translations are partially not used.
- RF-3113 Datafield translations are partially not used.
- RF-3114 Translations in the interface are missing.
- RF-3115 Quick report does not work if a project contains two or more phase/subphases with the same name.
- RF-3116 **Phase** view sometimes becomes unresponsive on Firefox.
- RF-3118 Not all non-alphanumeric characters are accepted for user passwords.
- RF-3130 Translations that have been entered are gone in copied projects or exported files.
- RF-3142 User profile displays language ID instead of the name.
- RF-3145 The file content preview for CSV imports is not working properly.
- RF-3148 The permanent task link which is generated by RayFlow is only working if the user is logged in and the project is selected.
- RF-3149 A user who is in an edit group of a phase cannot see the phase but just the text: "**No selected phase**".
- RF-3150 It is not possible to create a new datafield.
- RF-3151 The link from the **Command** button does not work in Firefox.
- RF-3153 After the installation of RayFlow Web the standard **Packaging project** has no report mapping.
- RF-3154 Neither the title of the table nor its **Column Chooser** are displayed at the **Upload History** table.
- RF-3157 The **Column Chooser** and the **Settings** button are not displayed in a phase when using Firefox.
- RF-3159 The block execution via invalid Logins is not shown in the **All Users** table.
- RF-3161 There is an error with the quick reports if a project contains a duplicated phase name.
- RF-3162 When clicking on an entry from the global search list, the user will be redirected to an error page

when using Firefox.

- RF-3164 The phase part of the task track filter rules has no effect.
- RF-3177 When creating a new task track using the phase view command button an error occurs.
- RF-3178 The task track command button never shows the existence of a task track for any task.
- RF-3179 Cannot delete notification profiles if users or groups are assigned.
- RF-3180 If the property editable is removed from a datafield or a datafield is disabled, the datafield will be removed from the list completely.
- RF-3182 Pop-ups are not centered anymore after the content or the browser size has been changed.
- RF-3183 Imported projects are not visible to any user in the GUI.
- RF-3185 The **Status change** dropdown menu only contains the status icons and does not display the status names.
- RF-3190 It is not possible to create a new project because the administration page will freeze.
- RF-3191 Clicking in the **View Documentation** button the **new project** tab is opened instead of the documentation.
- RF-3192 If an administrator creates an appointment for another user, his dashboard lists this appointment even though only appointments assigned to himself should be listed.
- RF-3193 Usernames cannot be changed.
- RF-3194 When a category which is currently in use is disabled, the category dropdown still shows the disabled entry.
- RF-3195 The CSV import is not working.
- RF-3204 User assignment to notifications always shows all unprivileged users as assignees.
- RF-3205 If an appointment is available and a single appointment or appointments for the whole project are downloaded, an exception occurs.
- RF-3206 **Status** and **Type** icons in the **Phase** view are not vertically centered.
- RF-3212 On the tools page of a project the tools of all the projects are displayed.
- RF-3213 Fixed table columns in the import view are moveable.
- RF-3216 On trying to create a new project a successful message is displayed but the project will not be created.
- RF-3217 An error occurs when mapping datafields.
- RF-3220 If a dropdown datafield is listed on a blank value inside a `.csv` file, the import fails.
- RF-3221 It is not possible to save changes to a datafield if the type dropdown is disabled.
- RF-3228 Appointments can be created for users that do not have permissions for the target phase.
- RF-3241 Editing an appointment in **phase view** and in **My Appointments** causes errors.
- RF-3242 In the provided reports the parameter selectors for the entry dates are too big.

- RF-3244 The **User-Group** assignment has been deleted from database.
- RF-3245 The **Datafield configuration** view does not show the increment function itself but its current execution value instead.
- RF-3247 When a user wants to save the changes made on a status entry (except the name), he will not be able to save the changes, since it will claim that the entered name is already used.
- RF-3249 It is not possible to create, update or delete tools.
- RF-3251 New tasks cannot be created due to notification events.
- RF-3255 Subphases are not shown in the history and there are no actual entries in the tracking view.
- RF-3257 If no license exists, an exception is thrown which prevents the start-up of the application and causes an internal error message.
- RF-3263 Emails raised by a client action shown an incomplete link.
- RF-3271 An error occurs when creating a task using a SLA with no event configuration.
- RF-3272 Translation buttons are not visible.
- RF-3273 The `SendNotificationAction` is not persisted correctly.
- RF-3274 Changes to a phase cannot be saved.
- RF-3280 The profile image is not saved.
- RF-3282 Quick Reports are neither displayed on the **Select Project** page nor on the **Quick Reports** page.
- RF-3287 Datafields are ordered by random inside of datafield groups instead of being ordered by their order numbers.
- RF-3289 All datafield edition jobs fail due to the **The given key was not present in the dictionary.** message.
- RF-3290 If the datafield filter is set to any special datafield option, no notifications are raised.
- RF-3291 Filter settings are not correctly displayed or saved when setting filters for a tasktrack.
- RF-3292 Tasks cannot be added to topics.
- RF-3293 When a user in the phase view edits a task and clicks on another tasks **accept** button, he is informed that there are unsaved changes. However, if he clicks on cancel, his changes are reverted and the other task gets accepted.
- RF-3295 Saving the event configuration will fail if any of the phases has no mode selected.
- RF-3297 Events filters and datafields filters are broken.
- RF-3298 The **Status Now** dropdown list is not filled correctly.
- RF-3299 In the **Tasks by Status** chart deleted tasks are also included.
- RF-3300 The task name label reset is not working.
- RF-3310 User language fallback is not working.
- RF-3313 Server Error when saving event translations.

- **RF-3314** When opening an event in the editor, the related form does not contain the saved data.
- **RF-3315** Finished status and related assignment is reported and notified on the following phase.
- **RF-3321** When the user calls the **My Profile** page for the first time, the **Save** button and the **New password** and **Confirm password** textboxes are active.
- **RF-3323** The datafield configuration displays datafield groups from all projects in the datafield creation pop-up and the datafield details.
- **RF-3325** After deleting a task type the success message is not displayed.
- **RF-3326** Old page entries are visible in the group visibility tab.
- **RF-3328** Tooltip of the collect translation button and the corresponding successful message should be more specific.
- **RF-3330** Selected projects and users are not displayed in the project dropdown main field after the have been selected. However, they remain selected.
- **RF-3331** Running an SSRS report with a dropdown menu option enabled causes RayFlow to believe that the status data sets data source has not been supplied.
- **RF-3334** Once parameters have been set and the SSRS report is run, RayFlow believes that a data source instance for the status data has not been supplied.
- **RF-3341** Translations are not used on notification tiles.
- **RF-3360** Saving datafield editions to blank states relates in an internal server error.
- **RF-3361** Editable datafields also show disabled checkboxes.
- **RF-3362** Administrators do not have the permission to assign their own tasks to other users.
- **RF-3369** Instance-related **My Tasks** and **My Appointments** pages are not available.
- **RF-3377** Initial datafield phase assignment action displays the **Editable** check box as checked even though it is not really checked.
- **RF-3398** Quick reports are not localized.
- **RF-3433** Root user cannot see any other users but himself.
- **RF-3445** Importing projects that contain notification profiles fails.
- **RF-3451** Custom filters name and description cannot be edited.
- **RF-3454** **My Settings** is not present in **Profile** after upgrading RayFlow.
- **RF-3459** Exception occurs when removing a parent phase setting from a phase.
- **RF-3463** A misleading error message in the log file states that there is an error in sending an email while the error is an invalid email server password.
- **RF-3464** Delivered Tasks are not listed on an unfiltered **Tracking** page.
- **RF-3466** Problem with the limitation of displayed elements in the **Activity of Users** report.
- **RF-3473** If a task is linked to other tasks in the workflow and it is finished from the last phase, the web application returns a callback error when trying to select the remaining tasks.

- **RF-3501** The webservice throws an exception on requesting the workflow for a project without datafields.

Migration

This chapter of the document is meant to help users upgrade from their existing RayFlow version to RayFlow Web 4.1. This chapter is divided into three parts:

1. Migration from RayFlow 1.6 to the current version
2. Migration from RayFlow 1.11 to the current version
3. Migration from RayFlow 2.0 (SP1) to the current version

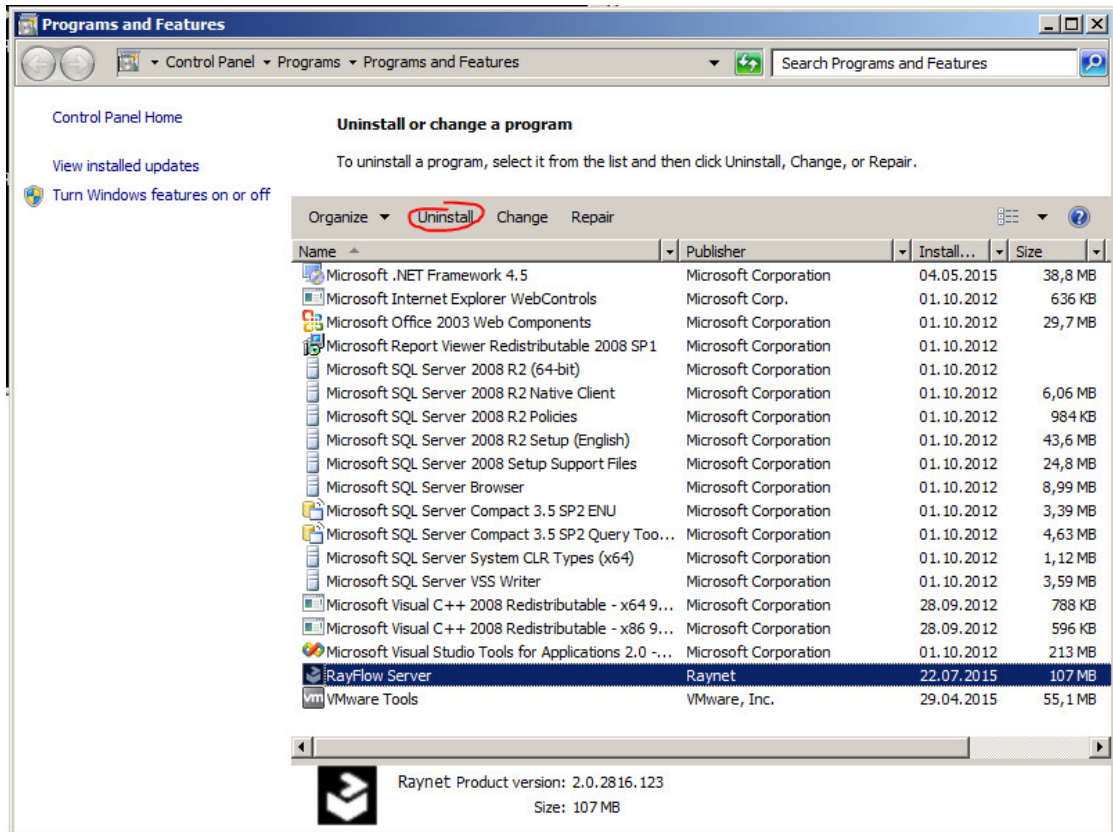
Migration from 1.6 to 4.1

To migrate from RayFlow Web 1.6 to RayFlow Web 4.1 first migrate from 1.6 to 1.11 . After this, follow the instructions for migrating from version 1.11 to RayFlow Web 4.1

Migration from 1.11 to 4.1

1. Update web application sources

- a. Uninstall the previous version of RayFlow Server:



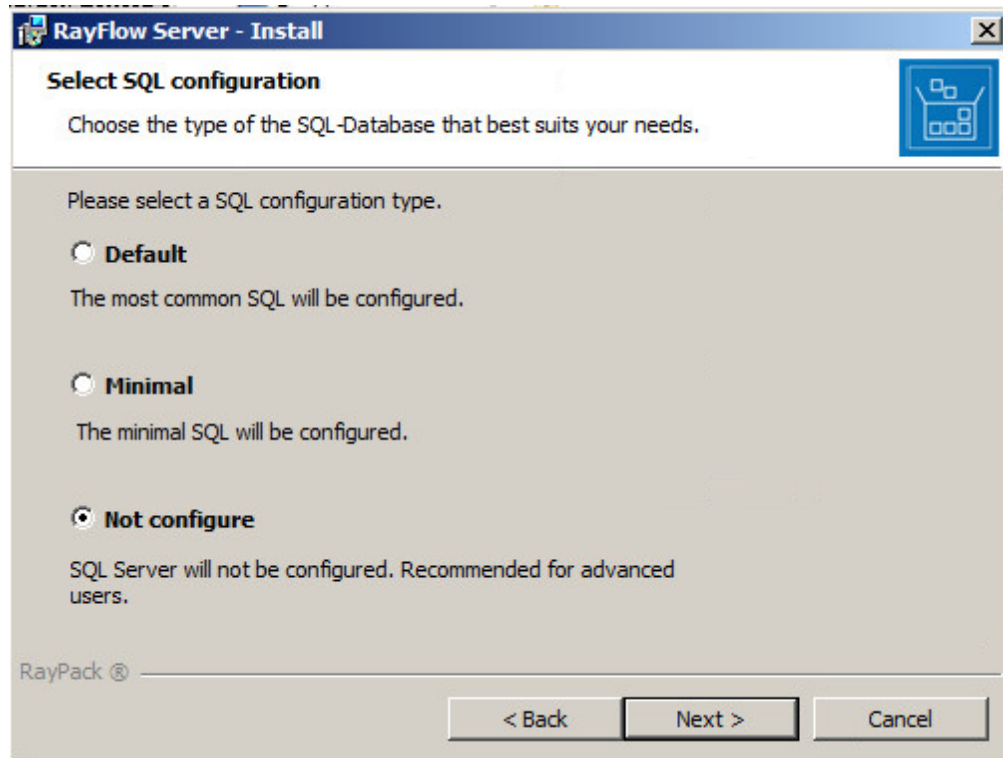
If RayFlow Server was installed manually (without MSI Installer):

- Make a backup copy of the complete RayFlow Server folder
- Remove all files and folders except the following:
 - .\Files
 - .\RFReports
 - .\ImportFiles
 - .\App_Data\UploadTemp\
 - .\bin\License
 - .\bin\.license
 - .\Logs\

App_Browsers	15.01.2015 10:55	File folder	
App_Data	15.01.2015 10:55	File folder	
bin	15.01.2015 12:49	File folder	
Charts	15.01.2015 10:56	File folder	
Documentation	15.01.2015 10:56	File folder	
Exported	15.01.2015 10:56	File folder	
Files	15.01.2015 10:56	File folder	
Help	15.01.2015 10:56	File folder	
Images	15.01.2015 10:56	File folder	
JSClass	15.01.2015 10:56	File folder	
Login	15.01.2015 10:56	File folder	
Logs	15.01.2015 10:56	File folder	
RFRReports	15.01.2015 10:56	File folder	
SQL_Scripts	15.01.2015 10:56	File folder	
UploadTemp	15.01.2015 10:56	File folder	
_app_offline.htm	15.01.2015 08:48	Opera Web Docu...	1 KB
AddReport.aspx	15.01.2015 10:21	ASP.NET Server Pa...	6 KB
Agents.aspx	15.01.2015 10:21	ASP.NET Server Pa...	7 KB
AppLocationEditor.aspx	15.01.2015 10:21	ASP.NET Server Pa...	6 KB
AppMonitor.aspx	15.01.2015 10:21	ASP.NET Server Pa...	12 KB
AppStatusEditor.aspx	15.01.2015 10:21	ASP.NET Server Pa...	10 KB
AppView.aspx	15.01.2015 10:21	ASP.NET Server Pa...	18 KB
BatchProcessing.aspx	15.01.2015 10:21	ASP.NET Server Pa...	29 KB

- b. Install the current version of RayFlow Server 4.1 using the MSI Installer. (For more information refer to the *RayFlow Server Deployment* Chapter in the *Installation Guide*)

NOTE: Skip database creation during installation!



- c. Open the `web.config` file in the RayFlow Server root folder and change the connection string to the existing database.

```
<!-- If this parameter is not included, then a .Net ADO connection timeout of 15 seconds is used by default. -->
<!-- Your connectionstring -->
<connectionStrings>
  <add name="RayFlowEntities"
    connectionString="(Data Source=(local);Initial Catalog=RayFlow16RedBull;Integrated Security=True;MultipleActiveResultSets=True;App=EntityFramework;
    providerName=System.Data.SqlClient"/>
</connectionStrings>
<adoSettings>
```

NOTE: The connection string can be taken from the web.config file stored in the backup folder created previously.

2. Update Database

RayFlow-Updater is a simple console program with 4 parameters for updating the RayFlow database to the newest state without the use of SQL-scripts.

```
rfDBUpdater.exe -path z:\raynet\DEV\sources\RayFlow.WebApplication\ -upgrade -wait
```

This application is located under the following directory of RayFlow Server installation directory: %
 INSTALLDIR%\RFDBUpdater\

Example of how to launch an update from a local folder:

```
rfDBUpdater.exe -upgrade -wait
```

Example of how to launch an update from any folder:

```
rfDBUpdater.exe -path z:\raynet\DEV\sources\RayFlow.WebApplication\ -upgrade -wait
```

Arguments

- **-path:** The path containing the RayFlow Server installation. It is necessary for the Database/Connection string which will be taken from web.config in the given path. The path is, at the same time, the address to your SQL_Scripts folder which also resides in the same Folder. The path can be omitted if the command is launched from the RayFlow Server installation folder
- **-upgrade:** Using this parameter will update your database to the newest state
- **-version:** Get current version of RayFlow
- **-wait:** Wait until any key action is taken by the user

Developer guide

SQL-Script changes

All database changes should be added to the file Updatescript.sql which you will find in RayFlow_Web_ folder in subfolder SQL_Scripts.

Reserved indexes for future use can be found in the index.sql file.

Structure of Updatescript.sql script

This file consists of two parts: version delimiter and SQL statements which are delimited by GO. In the example below, you can see how a version delimiter should be.

!!! GO is a delimiter and should always be in a single line

Line `###version-1.7###` is a version delimiter

Build-explanation

SQL-Statement

! Please no transaction commands in your sql statement.

In the example (Table acme) below you can see how your statement should look like.

```
IF NOT EXISTS(
--in comment please only
    SELECT NULL FROM sys.tables WHERE name = 'Acme' and type_desc = 'USER_TABLE'
)
BEGIN
CREATE TABLE ACME (...)/UPDATE TABLE ACME(...)/INSERT INTO (...)/DELETE ACME(...)
END
GO
```

Follow these steps to successfully upgrade your RayFlow database from 1.11 to 4.1

1. Backup the database

- Start SQL Server Management Studio
- Right click on the existing RayFlow database and select **Task** -> **Backup** from the context menu

2. Backup the file system

- Go to the RayFlow Server Installation directory
- Right click on it and then select **Send To** -> **Compressed Zip Folder**

Store your database and file system backup to a safe location

3. Old web.config

- Take note of the connection string entry within the `%INSTALLDIR%\web.config` file which can be found below the following line: `<!--Your connectionstring-->`

4. Delete old file system

- Delete all files and folders from `D:\RayFlow\customer_name\` except for the following folders:

Files, Images, Import, ImportFiles, Logs, RFReports and UploadTemp.

5. Implement new file system

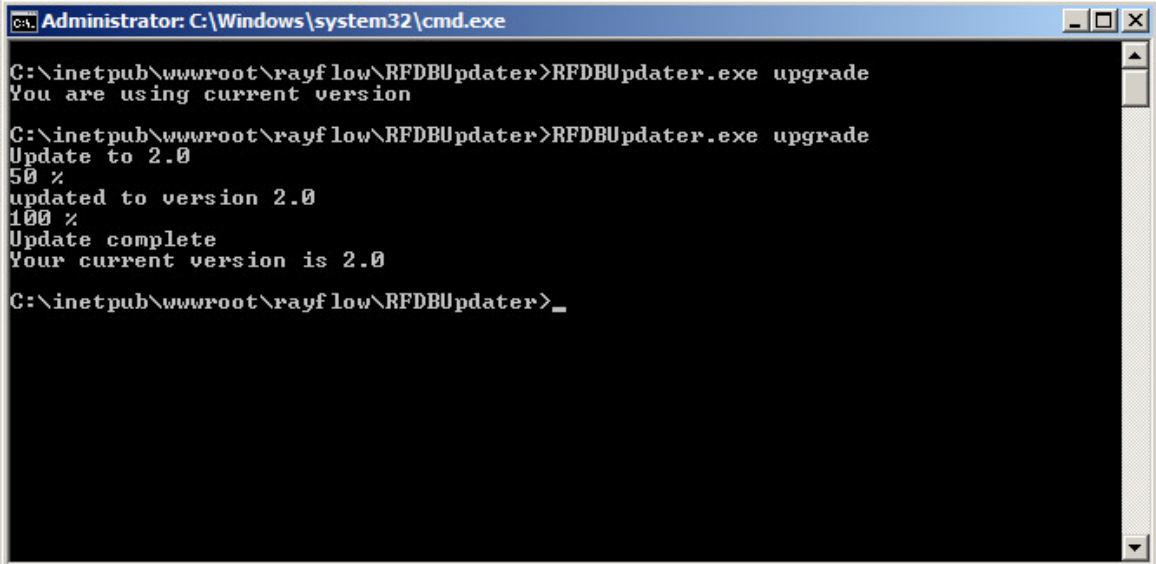
- Copy the RayFlow 1.10 source to your existing RayFlow directory. Merge the new folders with the existing ones, and choose the "Copy and Replace" command for the files that still exist.

6. Edit the new web.config file

- Open the web.config file in a text editor and add the connection string, which you previously noted into it. Save the changes to the new web.config file

7. Upgrade RayFlow database

- Launch a command prompt as Administrator
- Navigate to the folder RayFlow Installation Directory\RFDBUpdater
- Launch the RayFlow database updater tool. The updater tool has two switches:
-version: Gives you the current version of your RayFlow database
-upgrade : Upgrades the RayFlow database to the current version



```
Administrator: C:\Windows\system32\cmd.exe
C:\inetpub\wwwroot\rayflow\RFDBUpdater>RFDBUpdater.exe upgrade
You are using current version
C:\inetpub\wwwroot\rayflow\RFDBUpdater>RFDBUpdater.exe upgrade
Update to 2.0
50 %
updated to version 2.0
100 %
Update complete
Your current version is 2.0
C:\inetpub\wwwroot\rayflow\RFDBUpdater>_
```

The database updater can run into errors if your RayFlow instance has been modified and is no longer in the

default state. In this case analyze the errors, fix them manually (for example: add missing datafields or change keys in the database), and rerun the updater.

NOTE: You can repeat the execution of the updater several times until it finishes without any errors.

3. Manual configuration

➤ License

Reactivate RayFlow license by using the license wizard, or copy the old license file from the backup `rayflow1.x\bin` to the new RayFlow folder `rayflow4.1\bin`

➤ Phase icons,

Copy all needed phase icons from the backup `rayflow1.x\Images` to `rayflow4.1\Content\Images\Icons\Phase`

Recreate the icons to match the new style of RayFlow Server 4.1. The images must be in png format, black and white and 16 x 16 pixels.

See how to upload icons for phases in the user manual.

➤ Import

Copy all import files from the backup `rayflow1.x\ImportFiles` to the new RayFlow folder `rayflow4.1\ImportFiles`

➤ Custom fields

Reactivate the needed custom fields. Go to configuration/customfields and perform the needed changes.

NOTE: After the migration all custom fields will be activated.

➤ Column chooser

Start RayFlow Server in a browser (e.g. `http://localhost/rayflow`).Go to each phase and select the required datafields.

PACKAGE NAME	PACKAGE ID	INSTALLATION SOURCE TYPE
<input type="text"/>	<input type="text"/>	<input type="text"/>
● Adobe_Acrobat_Pro	0022	MSI
● Adobe Photoshop CS6		
● Skype		MSI
● Google SketchUp		MSI

Page 1 of 1 (4 Tasks) << <

[Create Filter](#)

Column Chooser

APPLICATION LANGUAGE

CHECKLIST

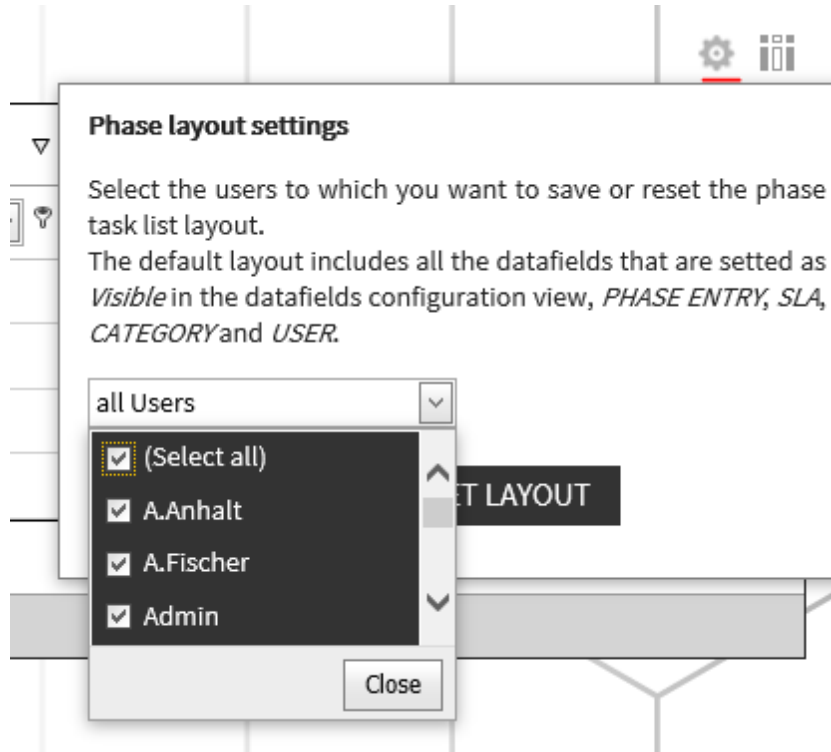
DEPENDENCY_1

DEPENDENCY_2

ESTIMATEDDISKSPACE

NOTE: After the migration all available datafields will be displayed in the task list view.

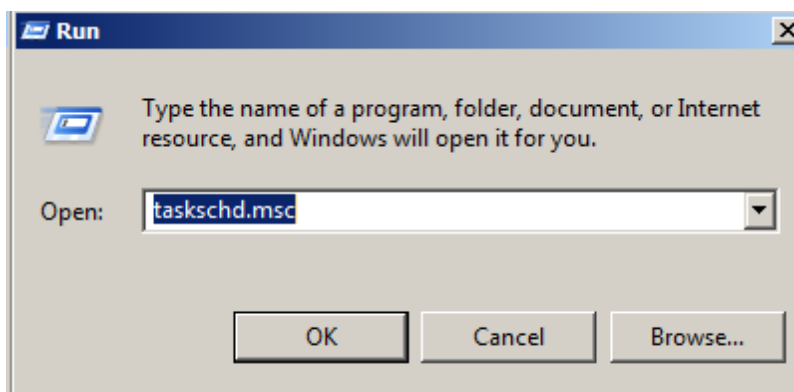
Save selected layout for all users:



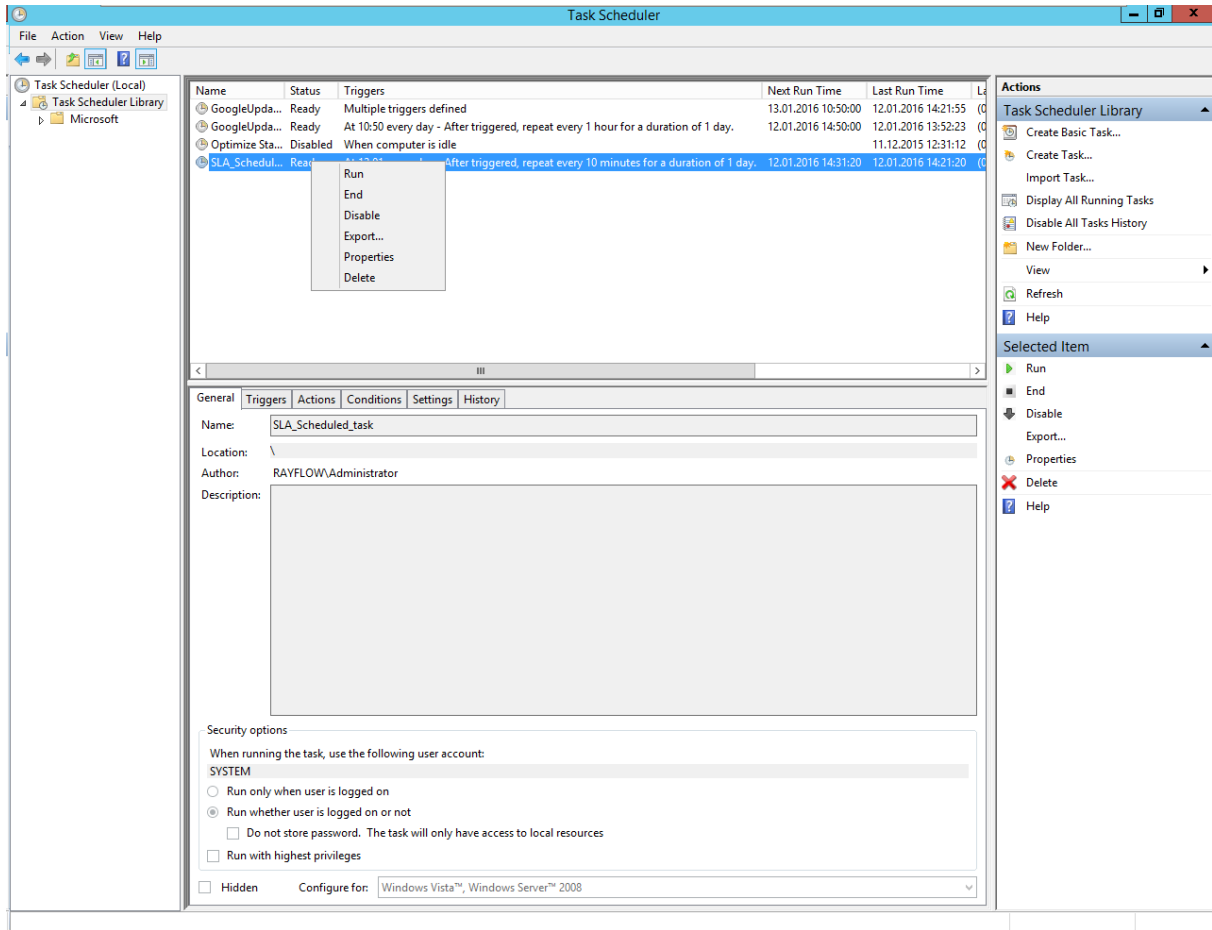
4. Remove SLA Scheduled Task

As the SLA Calculator tool is now integrated to the RayFlow Web Application, remove the previously created scheduled task for the SLA calculation. To do this:

- Start Task Scheduler



- Select the node Task Scheduler Library. A list of scheduled tasks for the local device will be shown. Right click upon the SLA task:



- Select Delete option from the context menu. A confirmation message will be shown. Click on Yes option to finalize removing the SLA scheduled task.

Migration from 2.0/2.0 SP1 to 4.1

To migrate from RayFlow 2.0 or its Sp1 to the current version, execute steps 1,2 and 4 of the topic Migration from 1.11 to 4.1.

Please contact our support if you have any questions or run into any problems.

Changes to the RayFlow Licensing Model

If migrating from RayFlow Web 2.x or earlier, the existing license data will not be recognized by the current version of 4.1. In order to use RayFlow Web, it needs to be reactivated using the same order number. The necessary license information will be automatically downloaded from the server. This operation requires a valid maintenance for the product. Contact our support to get help regarding migration and licensing.

System Requirements

Hardware Requirements

Minimal

- Minimum disk space required: 120 GB
- Minimum RAM required: 1GB
- Pentium 4, 2.4 GHz Processor
- Network 100Mbit

Recommended

- CPU Intel Core i5 or i7
- 8GB RAM
- Disc Space: 500 GB RAID 10 (4x250GB)
- Network 100Mbit

Prerequisite Software

The following are the minimum software requirements for the installation and running of RayFlow Web 4.1.

- Windows Server 2008 SP2 or higher
- Microsoft SQL Server 2008 or higher
- IIS 7 or higher
- .NET 3.5 for SQL Server
- .NET 4.5

**Note:**

Minimum server requirement for .NET Framework 4.5 is Windows Server 2008 SP2. Further information on system requirements for .NET Framework 4.5, can be found under the following link: <https://msdn.microsoft.com/en-us/library/8z6watww%28v=vs.110%29.aspx>

- Microsoft Report Viewer Runtime (Required to view SSRS Reports)

Please refer to the following links for system requirements related to different versions of Microsoft Report Viewer Runtime

Microsoft Report Viewer 2012 Runtime

<http://www.microsoft.com/en-us/download/details.aspx?id=35747>

Microsoft Report Viewer Redistributable 2008

<http://www.microsoft.com/en-us/download/details.aspx?id=577>

- Crystal Report Runtime 2010 13.0.14 (Only required if Crystal Reports are used for reporting)

Supported internet browsers:

- Microsoft Internet Explorer™ version 9.0 and newer
- FireFox version 3 and newer
- Chrome
- Microsoft Edge
- It is recommended to use a screen resolution of at least 1024x768 pixels.
- Although other browsers might work they are not officially recommended.

Additional Information

Further information regarding RayFlow Web can be found in several resources which are available.

- The *Operations Supplement* provides information about third-party software and libraries redistributed with RayFlow Web.
- The *Administration and Configuration Guide* provides detailed information about RayFlow Web.
- The product website <https://raynet.de/en/Raynet-Products/RayFlow> provides information about the product, news, and support.
- Raynet and its partners offer a range of training courses that can also be customized to meet your requirements. For more information on these courses, speak with your Raynet consultant or contact the Raynet Sales department via sales@raynet.de.

About Raynet

Raynet GmbH is a leading and innovative service and solution provider in information technology and specialized in the architecture, implementation and operation of all tasks within "Application Lifecycle Management". Raynet's Headquarters is in Germany and presently has more locations in Germany, USA, Poland, UK and Belgium.

For over 15 years, Raynet has supported hundreds of customers and partners with its products and solutions for enterprise application management projects worldwide. These include license management, software packaging, software deployment, migrations, client engineering and much more. Additionally, Raynet maintains and cultivates strong partnerships with leading companies in Application Lifecycle Management.

Raynet products and solutions are unique in design and functionality. Their development is highly driven by our customers and partners who play a big role in the development of our products and are a key reason why our products are always cutting edge. Whether you want to introduce a new deployment tool or to start a SAM project, whether you want to plan a packaging factory or do a migration – Raynet is the choice for best-of-breed-practices in services, products, and solutions for Application Lifecycle Management.

Next Steps

For more information, please visit our website: www.raynet.de or contact our sales team on +49 5251 54009-0 or sales@raynet.de



Raynet GmbH

Technologiepark 20
33100 Paderborn, Germany
T +49 5251 54009-0
F +49 5251 54009-29
info@raynet.de

www.raynet.de



www.rayflow.de