



 **RayVentory[®]**
is part of RayManageSoft *i*



RayManageSoft[®] *i*

10.6
Release Notes



Copyright © Raynet GmbH (Germany, Paderborn HRB 3524). All rights reserved.

Complete or partial reproduction, adaptation, or translation without prior written permission is prohibited.

Release Notes
for release 10.6 *infinity*

Raynet and RayFlow are trademarks or registered trademarks of Raynet GmbH protected by patents in European Union, USA and Australia, other patents pending. Other company names and product names are trademarks of their respective owners and are used to their credit.

The content of this document is furnished for informational use only, is subject to change without notice, and should not be construed as a commitment by Raynet GmbH. Raynet GmbH assumes no responsibility or liability for any errors or inaccuracies that may appear in this document. All names and data used in examples are fictitious unless otherwise noted.

Any type of software or data file can be packaged for software management using packaging tools from Raynet or those publicly purchasable in the market. The resulting package is referred to as a Raynet package. Copyright for any third party software and/or data described in a Raynet package remains the property of the relevant software vendor and/or developer. Raynet GmbH does not accept any liability arising from the distribution and/or use of third party software and/or data described in Raynet packages. Please refer to your Raynet license agreement for complete warranty and liability information.

Raynet GmbH Germany
See our website for locations.
www.raynet.de



Table of Contents

Introduction	4
New Features	5
Improvements	8
Highlighted Resolved Issues	12
Resolved Issues	15
Known Issues	20
RayVentory System Requirements	21
Hardware Requirments	21
Prerequisite Software	21
RayManageSoft System Requirements	24
Hardware Requirements	24
Prerequisite Software	25
Compatibility	32
Compatible Components	32
Upgrading from Earlier Releases	33
Additional Information	34

Introduction

RayManageSoft / RayVentory 10.6, just like its predecessors, will continue to provide a complete set of products for software and operating system (OS) deployment, as well as security and patch management. The software includes four components for deploying, patching, and securing applications and operating systems, all built on a common infrastructure that includes IT asset discovery, inventory and software asset management. The client-centric architecture leverages existing IT hardware to speed up implementation and reduce costs for mid-size and large organizations.

The release of RayManageSoft / RayVentory 10.6 has a great deal to do with the feedback from our customers since some of its new features and enhancements come as a direct result of that communication. The new features in version 10.6 meet the needs of our current customers and the demand of the current market. Some of those demands are in the area of software asset management (SAM) where enterprises are looking for a well-rounded, comprehensive deployment product that also targets license counting, detailed reporting, and inventorying of software and hardware, just to name a few.

Welcome to RayManageSoft / RayVentory 10.6.

New Features

This chapter of the Release Notes gives an overview about the new features that have been added to RayManageSoft / RayVentory in 10.6.

[RMS-2148] Windows Server 2016 Support

RayManageSoft / RayVentory now supports the new Microsoft operating system Windows Server 2016. Windows Server 2016 support has been added for Software Deployment, Security Patch Management, RayVentory, Managed Devices, and Distribution Server.

[RMS-1659] GPO Editors setting synchronization

RayManageSoft GPO-Editors can be defined to configure who should be allowed to work with RayManageSoft / RayVentory Policies. Only new created policies used to consider the settings. Now a tool has been implemented that enables you to synchronize the settings to all existing RayManageSoft / RayVentory policies. This tool enables you now to updated the trustees of your active directory policies after any GPO-Editor setting adjustments.

[RMS-1792] White-List for Managed Device

You can now specify which set of active directory users are allowed to interact with the Deployment Manager Agent directly. This can be done by specifying security groups for the "AllowedGroups" setting in managed device settings.

[RMS-2097] Apply-Policy-Condition for Managed Device

Since the RayManageSoft / RayVentory agent works on a "desired state" principle it is rather simple to affect multiple applications with little effort. However this also brings risks around unwanted actions. An additional layer of intelligence will be implemented allowing the agent to independently determine if an abnormal situation based on rules exists, thus leaving the current state unaltered.

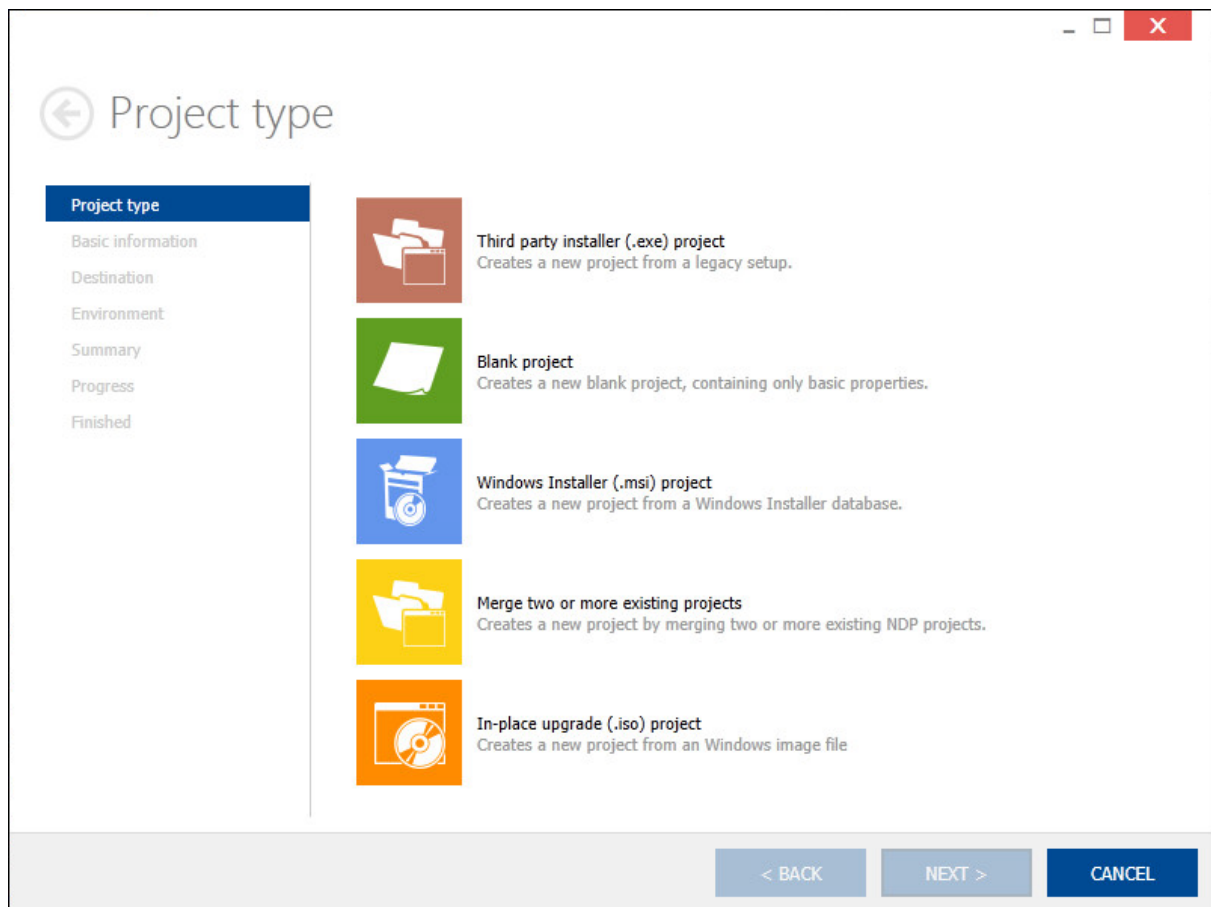
'ApplyPolicyCondition' feature is implemented that is going to be executed

- after the client side merge is done
- and before the policy is processed.

When the 'ApplyPolicyCondition' function completes and all conditions have been met the process will continue as normal. Otherwise the "Update Machine Policy" gets terminated and a failure message is sent to the administration server of this current fail and the actual condition that failed, further details in the reporting section.

[RMS-2019] In-Place upgrade – Supported Package Creation

The Import Wizard for packages has been extended. You have now the possibility to easily create a basic RMS package for your Windows image files. This enables you to perform silent In-Place upgrades on your managed devices. The upcoming wizard will assist you on creating the package and provide default values.



[RMS-2065] New inventory targets

New inventory tools in RayManageSoft / RayVentry for additional targeting. Be aware that the tools have not been verified for all possible environment variations and are therefor similar to a beta release.

We highly recommend to first perform an acceptance test on your test environment before going productive with the new tools.

- Oratrack - Oratrack performs automatic Oracle DB discovery and inventory.
- OSI - OSI creates an inventory of an OpenStack infrastructure.
- RIU - RIU remotely creates basic hard and software inventories of certain Linux and Unix distributions.
- RWI - RWI remotely creates basic hard and software inventories via WMI.

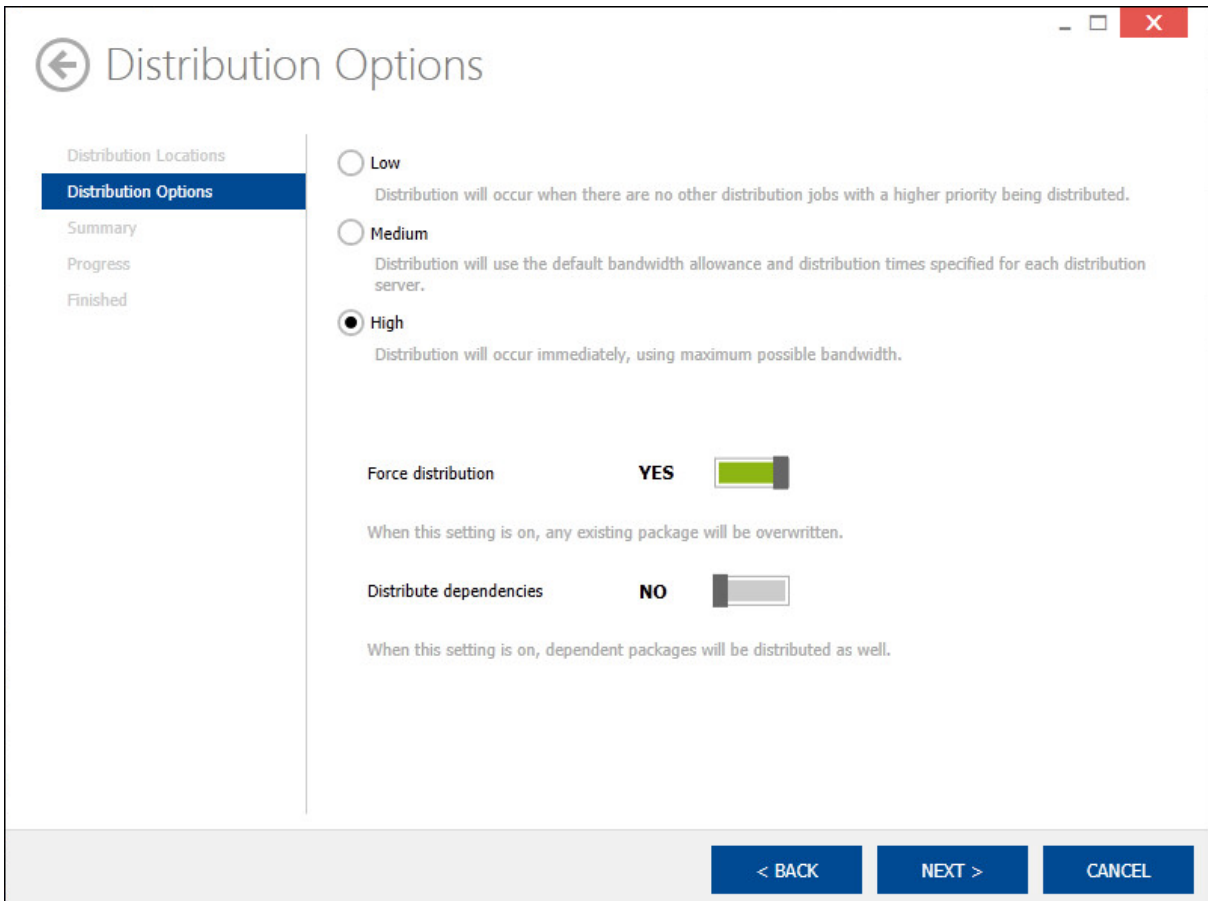
Improvements

This chapter of the Release Notes gives an overview about the improvements that have been added to RayManageSoft / RayVentory in 10.6.

[RMS-1878] Configure defaults for Distribution Wizard

Defaults for the “Force Distribution” and “Distribute Dependencies” check boxes in the Distribution Wizard can now be defined.

We extended the Distribution Wizard Configuration in the Deployment Manager Configuration by “Force distribution by default” and “Distribute package dependencies by default”.



Distribution Options

Distribution Locations

- Distribution Locations
- Distribution Options**
- Summary
- Progress
- Finished

Low
Distribution will occur when there are no other distribution jobs with a higher priority being distributed.

Medium
Distribution will use the default bandwidth allowance and distribution times specified for each distribution server.

High
Distribution will occur immediately, using maximum possible bandwidth.

Force distribution **YES**

When this setting is on, any existing package will be overwritten.

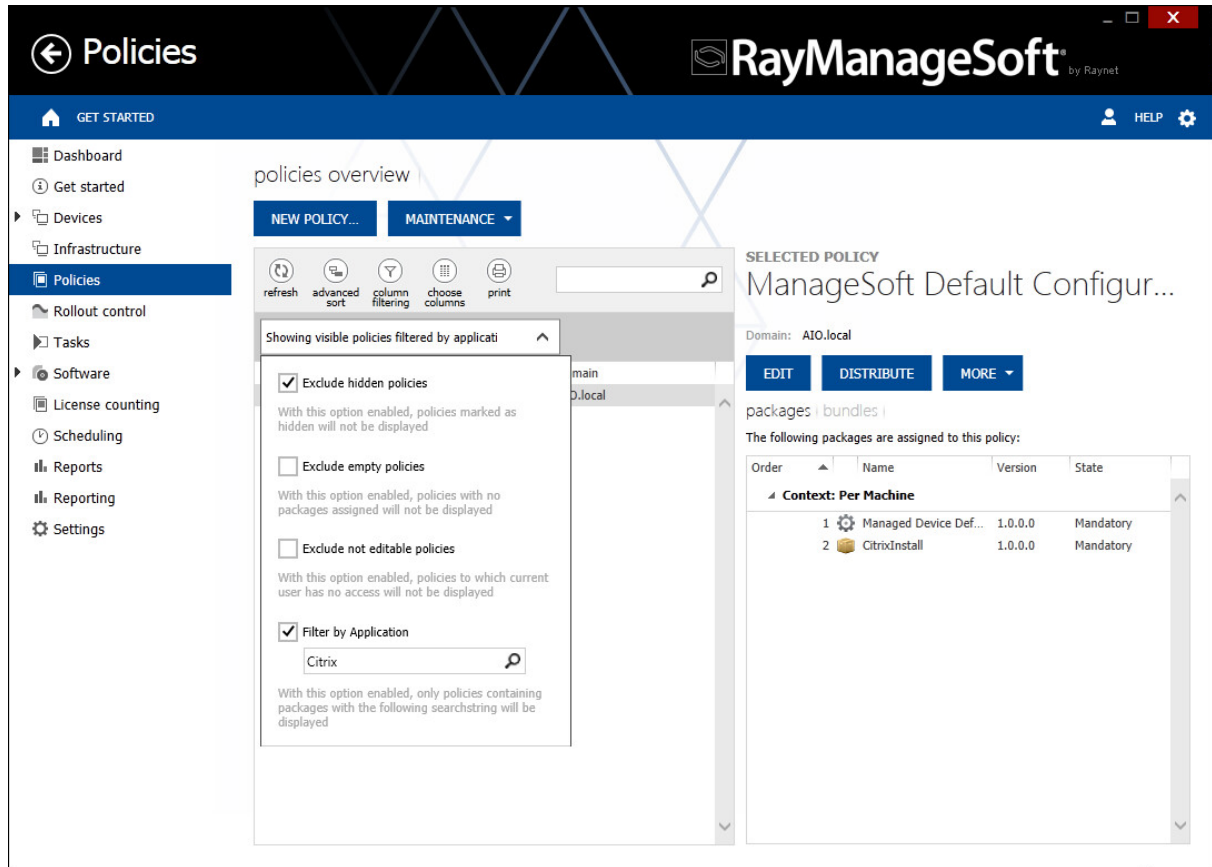
Distribute dependencies **NO**

When this setting is on, dependent packages will be distributed as well.

< BACK **NEXT >** **CANCEL**

[RMS-324] Search Policy by Application in Policy Snapin

Additional filter for policies in the Policy Snapin has been implemented. The filter provides you now the possibility to filter your policies by application.



[RMS-1795]ADBrower Dialog - Search Bar Improvement

The search function has been improved. It scans now the available sub elements correctly and does not anymore require to have the nodes unfolded.

[RMS-2046] Task Snapin Grid improvements

The first row is always selected and by default the sorting is done by last update descending.

history | settings |

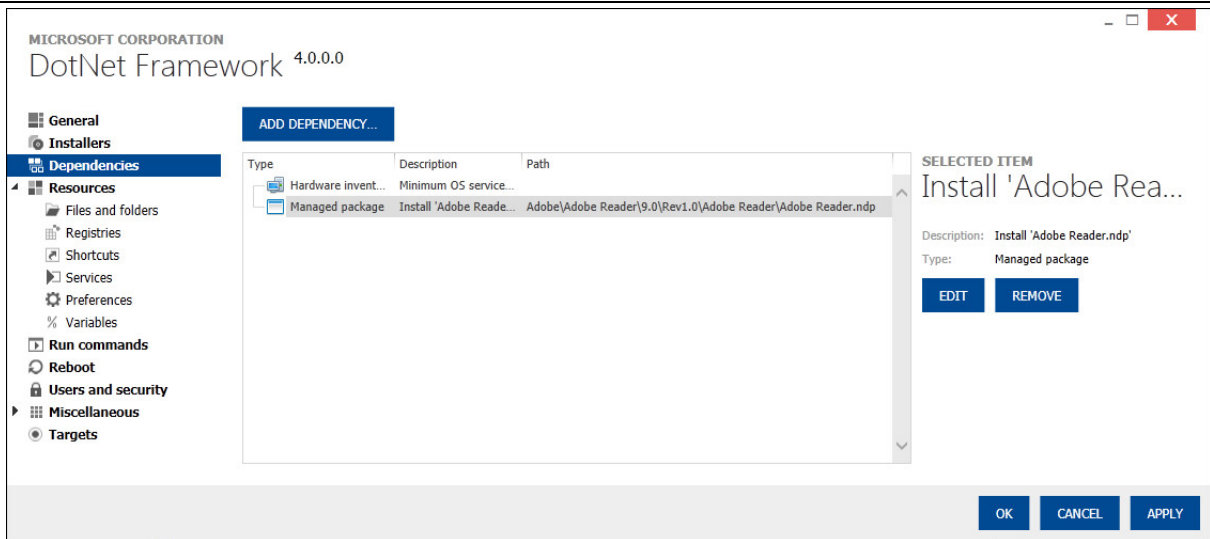
Name	Type	Progress	Last update
▲ Last update: Yesterday			
✓ Remote Command Task - SUS - Inventory	Inventory	<div style="width: 100%; height: 10px; background-color: green;"></div>	14-09-2016 14:53:29
✓ Remote Command Task - SUS - CMD Test	Client command	<div style="width: 100%; height: 10px; background-color: green;"></div>	14-09-2016 14:50:43
✓ Discovery Task - Sustainable - BRIDGEPC	Discovery	<div style="width: 100%; height: 10px; background-color: green;"></div>	14-09-2016 14:48:18
✓ Adoption Task - SAN - SRVHYPERV01	Adoption	<div style="width: 100%; height: 10px; background-color: green;"></div>	14-09-2016 13:55:36
✓ Discovery Task - Sandbox - SRVHYPERV01	Discovery	<div style="width: 100%; height: 10px; background-color: green;"></div>	14-09-2016 13:44:42
⚠ Adoption Task - Sustainable (15)	Adoption	<div style="width: 95%; height: 10px; background-color: green; border: 1px solid red;"></div>	14-09-2016 13:18:10
✓ Remote Command Task - Sustainable - Chang...	Client command	<div style="width: 100%; height: 10px; background-color: green;"></div>	14-09-2016 12:56:06
! Remote Command Task - Sustainable - Chnag...	Client command	<div style="width: 100%; height: 10px; background-color: red;"></div>	14-09-2016 12:29:02
✓ Discovery Task - Sustainable DB - 10.1.56.71	Discovery	<div style="width: 100%; height: 10px; background-color: green;"></div>	14-09-2016 08:04:02
▶ Last update: tirsdag			
▶ Last update: Last Week			
▶ Last update: Last Month			
▶ Last update: Older			

[RMS-1114, RMS-2037] SNMPTracker on Distribution Server by RemoteExecution

The SNMPTracker remote action can now also be started from Distribution Servers.

[RMS-1932] Path column for managed package dependency

In addition to the name of a package dependency the path of the package is displayed since the name is not unique.



[RMS-2094] Security Patch Manager - Target Configuration extended

Operating system and application targets got updated. Now even different kind of Windows 10 variants can be considered.

[RMS-2088] Security Patch Manager - Resource GUID Twins

PatchInstaller of the RMS Security Analyzer is now able to consider so called Twin GUIDs of the patch resources. Some matching used to fail and required resources to be installed were ignored.

Highlighted Resolved Issues

The following is the list of highlighted issues that have been resolved in RayManageSoft / RayVentory in 10.6.

[RMS-2076] Filter out false DB-instances

By default, the Oracle DB setup creates listeners like 'CLRExtProc' which don't correspond with a DB instance. When running in discovery mode then DB-Instances with a successful connection or failing to do so, due to authentication or protocol issues must be considered as valid DB-Instances.

[RMS-2020] Immediate reboot issue

"Apply Machine Policy" event was not started after the immediate reboot.

[RMS-2002] Remote Console for ManageSoft directory installation

The login failed because the user was not determined correctly to be a part of the 'MGS Administrator' local group.

[RMS-1954] Package Installations detail reports are not correct

Drill down in reporting for software package installation success/pending displayed wrong packages.

[RMS-1947] Data export issue

Depending on the column selection in devices grid export of data failed. The problem has been identified and fixed for all snapin grids.

[RMS-1891] URL defines the Name of the File

Name of files were too long because of URL changes in Microsoft security updates. Now when security packages are created, the source names are shortened.

[RMS-1879] Issue for 'Verify' button in selector of the managed device

In case the package was not anymore allocated to the managed device, it used to be not possible to call the verify functionality in the selector. After pressing the 'Verify' button, nothing was happening.

The condition got adjusted, so that even not allocated but rather installed packages can be repaired using the 'Verify' button.

[RMS-1871] ComputerID of NetworkDevice update issue

ComputerID for a NetworkDevice changes for no reason. To fix the problem matching during import of

discovery logs has been adjusted. Before trying to bind the device data with DNSFullName to a Computer object, the NetworkDevice table is searched for the DNSFullName. When the ComputerIDs from the NetworkDevice records are unambiguous then this ComputerID is used for binding and the AD stays untouched.

[RMS-1866] Package pack issue

Software package cannot be packed because the path towards files got wrongly written into the ndp file. The parser of the software package editor got fixed.

[RMS-1859] Package validation issue

The validation failed for new created packages because the targets got not written correctly. The targets set up for the package are now also written for created variables.

[RMS-1858] Package Installation Issue

The package installation was not working correctly. Self-heal of packages caused a reboot cycle on the managed devices. The self-heal used to replace identical files.

[RMS-1857] Reporting ADTree OU limitation

In reporting the ADTree got not correctly loaded. The tree structure used to be incomplete for two items with space and without space, such as "OU=Working" and "OU=Working Legacy".

[RMS-1852] Issues in 'My Assets' of reporting

The pages could not be loaded correctly for

- My assets > discovery > Discovered device counts by operating system
- My assets > discovery > Discovered devices showing operating system
- My assets > Processor > Computers showing processor speed and operating system
- My assets > Processor > Computer counts by processor speed and operating system.

[RMS-1844] Wrong package version in software library

The software library displays packages with wrong name or version. We have identified and fixed the issue in 'installation repair' part when inventory files are imported.

[RMS-1811, RMS-1873, RMS-1988, RMS-1989, RMS-2016] Matching issues in inventory and discovery importer

Matching issues when importing inventory or discovery files caused duplicated computer entries. Furthermore because of the faulty matching it appeared that data of devices got not correctly gathered, such as the DNS

name was still missing or ComputerID did changed for NetworkDevice entries.

[RMS-1778] Package reporting issues

Software Package Reporting did not display failed upgrades of RayManageSoft packages. The importer of installation log files got adjusted to handle the issue. The installation table gets now updated in case an installation log gets imported of a failed upgrade. The previous record of the older version is dropped.

[RMS-1722] Incorrect 'pending' display in reporting

Certain bundles were shown wrongly as "pending" in the bundle reporting. It was wrong because the corresponding GPO does only affect a certain set of devices and some other devices were still taken into account.

[RMS-1720] AddComputer

Stored procedure AddComputer did not deliver an Operating System ID, in case there was already an entry in Operating System table.

[RMS-947] Collision issues with bundles when sorting packages for policy

The algorithm of package sorting in a policy according to package order in bundles got reworked to fix the deadlock problem.

Resolved Issues

The following is the list of issues that have been resolved in RayManageSoft / RayVentory in 10.6.

[RMS-2101] 'Required by' adjusted to not exclude anymore superseded patches

[RMS-2080] Policy Visibility issue on Policy Snapin

[RMS-2079] Adjust the targets of the components to be in scope of the package targets

[RMS-2078] UpdateRequired action in Security Patch Manager reworked

[RMS-2077] Display issues of package data in ManageSoft policies

[RMS-2072] Silent MSI installation issue

[RMS-2063] Not possible to add the same name of policy in different domain

[RMS-2061] Oratrack filter RPC/other listeners by error messages on connection attempt

[RMS-2068] Inventory import failed for oracle database information

[RMS-2053] Incorrect format of domain after import discovery

[RMS-2038] 'Print' and 'export' buttons in distribution tab of Infrastructure Snapin not working

[RMS-2030] MSSECURE not available for download anymore

[RMS-2026] SNMPTracker outputs DeviceID="" in the NDI without having a DeviceID

[RMS-2025] Some RMS SSRS reports are not imported

[RMS-2022] RVP - SQLite doesn't run the review lite script because of argument NOLOGINTIME.

[RMS-2021] SWB Oratrack reports too many instances

[RMS-2017] Create OS in DB if not found

[RMS-2013] License counting - Deleting property was not possible

-
- [RMS-2011] Performance issue during item selection in devices grid**

 - [RMS-2009] Working Directory box in the Run Command dialog of the Package Editor was wrongly mandatory**

 - [RMS-1978] First 'SNMP scan' task could not be removed**

 - [RMS-1972] DomainFlatName is empty when just the inventory log is imported**

 - [RMS-1965] Software library tree-view uncollapsed all packages after cleaning of search box**

 - [RMS-1960] Message in side-bar implemented for Dependencies are not displayed for received packages**

 - [RMS-1965] Software library tree-view uncollapsed all packages after cleaning of search box**

 - [RMS-1954] Package Installations detail reports are not correct**

 - [RMS-1951] Wrong OS in RayManageSoft Dashboard**

 - [RMS-1950] Error in Oratrack (Parameter "sysdba")**

 - [RMS-1949] NetworkDevice will not be created for computers that are domain members**

 - [RMS-1947] Data export from Device Snapin not possible**

 - [RMS-1936] OS deployment driver recognition issue**

 - [RMS-1931] Command line argument assysdba is not saved/loaded to credentials file**

 - [RMS-1928] Collation issue in sp_InventoryOverview**

 - [RMS-1926] Receive issue - First char is a blank in created path**

 - [RMS-1925] SPM Automation - AddToPolicy - Replace Package issue when using same security groups**

 - [RMS-1922] ndschedag executable running in user context for events from machine schedule (Windows 8.1, Windows 10)**

-
- [RMS-1915, RMS-2009] Run Command Dialog - Working directory box is always mandatory**

 - [RMS-1905] License Counting - Wizards and Dialogs rework**

 - [RMS-1904] Improvements in UI of Web Reporting**

 - [RMS-1895] Package Editor - Shortcuts - icon index equal to '-1'**

 - [RMS-1888] Web reporting CSV export issue**

 - [RMS-1885] Issues when receiving or creating a package a reusing the same name but changing case sensitivity**

 - [RMS-1880] 'Add new Device' does not save Role**

 - [RMS-1872] Device Role of network device gets reset**

 - [RMS-1868] Missing 'Architecture, Environment, Language' columns in Run Commands dialog of Package Editor**

 - [RMS-1861] Removing target from UI for specific items, that don't support targeting**

 - [RMS-1856] RVP - SYSDBA Option changed after inventory**

 - [RMS-1853] RVP - Result Output path issue**

 - [RMS-1841] Ndrack - Assertion failure due to assuming utf8 where it is actually iso-8859-1**

 - [RMS-1839, RMS-1907] Managed Device cache for Install Location in Package Editor was not loaded correctly**

 - [RMS-1827] Distribution Location and Reporting Location names are not allowed to be the same**

 - [RMS-1822] Password in Reporting properties dialog is visible**

 - [RMS-1820] Icon index to non-existing icon reference**

 - [RMS-1810] Improve remote execution error messages**

 - [RMS-1793] Add Device/Send Message without permission**

-
- [RMS-1780] RayManageSoft Database-Design - Maximum key length fixes**

 - [RMS-1773] In Package Editor for new external installer the value of Source Location attribute was faulty+**

 - [RMS-1753] Oratrack - Argument path appears not to work when it ends on **

 - [RMS-1752] Oratrack - Argument QueryPath issue**

 - [RMS-1749] Oratrack - Argument silent=true doesn't work as expected**

 - [RMS-1748] Oratrack - Missing privileges for rvuser in DEV/QA Oracle environment**

 - [RMS-1745] Oratrack - Order arguments in usage text by name**

 - [RMS-1725] ManageSoftRP is not registered after Upgrade**

 - [RMS-1707] SNMPTracker started from the user interface issue**

 - [RMS-1645] License Editor – Display name length allowed check**

 - [RMS-1630] Grid Layout not saved in Policies Snapin and ‘Add package to policy Wizard’**

 - [RMS-1577] Misleading texts in OID Catalog tab - Explanations and help needed**

 - [RMS-1551] RVP - No files under recent if output path is changed**

 - [RMS-1510] For multiselection the Edit button was not grayed out in Policy Snapin**

 - [RMS-1373] Creation of windows installer project - upgrade codes was not taken from "*.msi" file**

 - [RMS-1368] Faulty loading number of policies on policies tile of dashboard's**

 - [RMS-1365] Received packages with wrong folder structure**

 - [RMS-1323] Oracle Server Worksheet is empty after giving Ndtrack and Oratrack inventories**

 - [RMS-1175] Overview color mismatch**

 - [RMS-1115] DeviceName is changed wrongly to ComputerCN after performing 'RMSdatabase daily**

database maintenance' job

[RMS-1050] Summary page of the Create Copy wizard - Destination or Source strings are not wrapped

[RMS-1024] IsActive for package are set to 1 during import of Log files

[RMS-1007] Search box and column filtering button on grid of 'device role', 'oid catalog' tabs needed

[RMS-939] Keeping custom device role after import of discovery log

[RMS-711] Files and folders of Package Editor - Source location of File dialog - files from sources location are not recognize as file in sources folder

[RMS-672] Reverse packages order in Policy Editor - first package has wrongly a zero as order number

[RMS-637] Summary page of the New Package wizard – Text is not wrapped correctly

[RMS-636] Summary page of the Receive Package wizard – Text is not wrapped correctly

[RMS-610] Client State Information report - content is not filter according to selected domain

[RMS-588] Searching computer in Device Snapin performance issues

[RMS-428] Sites tile on dashboard is not expanding devices node on console tree

[RMS-395] Package Editor - New folder can only be created under defined folders

[RMS-388] RMS crashes after printing the packages in the software library

[RMS-384] Jumplist for 'Open Security Patch Manager'

[RMS-359] Remote Task 'Reboot using local Deployment Manager agent' – Report of 'Failed reboot' issue

Known Issues

For a list known issues in RayManageSoft / RayVentory refer to the Raynet [Knowledge Base](#). If there are any known issues, the respective information can be found here and will be kept up-to-date.

RayVentory System Requirements

This section describes the compatibility of RayVentory 10.6.

Hardware Requirements

RayVentory Server

- Minimum RAM: 2 GB
- Recommended RAM: 4 GB or higher
- Minimum disk space 8 GB

RayVentory Server (1 - 4.000 devices)

- Dual Core CPU
- 8 GB RAM
- 60 GB disk space for OS
- 40 GB disk space for database

RayVentory Server (4.001 - 10.000 devices)

- Dual Core CPU
- 16 GB RAM
- 60 GB disk space for OS
- 100 GB disk space for database

RayVentory Portal

- Minimum RAM: 2 GB
- Recommended RAM: 4 GB or higher
- Minimum disk space: 2 GB

Prerequisite Software

The table below describes the supported operating systems and software prerequisites of RayManageSoft / RayVentory 10.6 *infinity* at the time of release.

Component	Operating system	Prerequisite software
RayVentory Server	<ul style="list-style-type: none"> • Windows 2016 Server • Windows 2012 R2 Server • Windows 2012 Server • Windows 2008 R2 Server x64 • Windows 2008 Server x86 SP2 • Windows 2008 Server x64 SP2 	<ul style="list-style-type: none"> • .NET Framework 4.0 • PowerShell 3 • SQL Server 2008 - 2015 Express or higher edition • Microsoft Internet Information Services 6.0 to 8.5
RayVentory Portal	<ul style="list-style-type: none"> • Windows 2016 Server • Windows 2012 R2 Server • Windows 2012 Server x64 • Windows 2008 R2 Server x64 • Windows 2008 Server x86 SP2 • Windows 2008 Server x64 SP2 	<ul style="list-style-type: none"> • .NET Framework 4.0 • Microsoft Internet Information Services 6.0 to 8.5
RayVentory for OS Inventory (Agentless inventory)	<ul style="list-style-type: none"> • Windows 2016 Server • Windows 2012 R2 Server • Windows 2012 Server • Windows 2008 R2 Server Core • Windows 2008 R2 Server • Windows 2008 Server Core • Windows 2008 Server • Windows 2008 Server Core x64 • Windows 2008 Server x64 • Windows 10 • Windows 10 x64 • Windows 8.1 • Windows 8.1 x64 • Windows 8 • Windows 8 x64 • Windows 7 • Windows 7 x64 • Windows Vista • Windows Vista x64 • RedHat Linux 8 and 9 	<ul style="list-style-type: none"> • Internet Explorer 7.0 to 11.0 (Windows platforms only) • Java SE Runtime Environment (build 1.6.0) (Mac OS X agent inventories only)

	<ul style="list-style-type: none"> • RedHat Enterprise Linux 3, 4, 5, 6, 6.1 • SuSE Professional/OpenSuSE 9, 10, 11 • SuSE Enterprise Server (SLES) 9, 10, 11 • Mac OS X 10.8, 10.9, 10.10 • Windows XP • Windows XP x64 • Windows 2003 R2 Server • Windows 2003 R2 Server x64 • Windows 2003 Server • Windows 2003 Server x64 • Solaris 9, 10, 11 (Intel) • Solaris 8, 9, 10, 11 (SPARC) • CentOS 6.x, 7.x • Fedora 21 • AIX 5.2, 5.3, 6.1, 7.1 • HP-UX 11.00, 11i, 11i v2, 11iv3 	
RayVentry for vSphere Inventory	<p><u>vSphere Components</u></p> <ul style="list-style-type: none"> • VMware ESX Server 3.0 and higher • VMware ESXi Server • VMware vCenter Server 	<ul style="list-style-type: none"> • .NET Framework 4.0
RayVentry for Oracle Inventory	<p><u>Database Components</u></p> <ul style="list-style-type: none"> • Oracle Database 9i • Oracle Database 10g • Oracle Database 11g • Oracle Database 12c 	<ul style="list-style-type: none"> • Java Runtime 1.4.2 - Java 8 • Any operating system supporting Oracle JRE



Warning:

Managed devices with operating systems which use OpenSSH 6.9 or higher are not supported!

RayManageSoft System Requirements

This section describes the compatibility of RayManageSoft / RayVentory 10.6 *infinity* products. If installing any components of RayManageSoft / RayVentory on the same server, the version of that component must also be 10.6 *infinity*.

Hardware Requirements

Basic requirements

For devices running the Deployment Manager Administration Console or the Managed Device Selector

- Minimum screen resolution: 1024 x 768 pixels
- Minimum color settings: 8 bit (256 colors)

Core servers

- Minimum RAM: 2 GB
- Recommended RAM: 4 GB or higher
- Minimum disk space: 1 GB

Reports servers

- Minimum RAM: 2 GB
- Recommended RAM: 4 GB or higher
- Minimum disk space: 1 GB

Data servers

- Minimum RAM: 2 GB
- Recommended RAM: 4 GB or higher
- Minimum disk space: 1 GB
 - Additional 40 GB for systems including OS Deployment Manager
 - Additional 30 GB for systems including Security Manager

Site servers

- Minimum RAM: 1 GB
- Recommended RAM: 2 GB or higher
- Minimum disk space: 100 MB

Remote console

- Minimum RAM: 1 GB
- Recommended RAM: 2 GB or higher
- Minimum disk space: 700 MB

Distribution servers

- Minimum RAM: 1 GB
- Recommended RAM: 2 GB or higher
- Minimum disk space: 1 GB
 - Additional 20 GB for systems including OS Deployment Manager
 - Additional 30 GB for systems including Security Manager

Managed devices

- Minimum RAM: 512 MB
- Recommended RAM: 1 GB or higher
- Minimum disk space: 300 MB

Prerequisite Software

The table below describes the supported operating systems and software prerequisites of RayManageSoft / RayVentory 10.6 *infinity* at the time of release.

Component	Operating system	Prerequisite software
Core Server	<ul style="list-style-type: none"> • Windows 2016 Server • Windows 2012 R2 Server • Windows 2012 Server 	<ul style="list-style-type: none"> • .NET Framework 4.0 • Jre-7u45-windows-i586 x86 • Internet Explorer 7.0 to 11.0

	<ul style="list-style-type: none"> • Windows 2008 R2 Server¹ • Windows 2008 Server SP1-SP2 • Windows 2008 Server x64 SP1-SP2¹ 	<ul style="list-style-type: none"> • Microsoft Internet Information Services 6.0 to 8.5 <p><u>For OS Deployment Manager:</u></p> <ul style="list-style-type: none"> • Microsoft Windows Automated Installation Kit (WAIK) with WinPE 3.0 or 3.1 for Windows versions from XP to 7 • Windows Assessment and Deployment Kit (ADK) with WinPE 3.1 or later for Windows 8, 8.1, 10 • Microsoft Windows Deployment Services (WDS - required only if you intend to use PXE support) • Microsoft Sysprep
Remote Console	<ul style="list-style-type: none"> • Windows 2016 Server • Windows 2012 R2 Server • Windows 2012 Server • Windows 2008 R2 Server • Windows 2008 Server SP1-SP2 • Windows 2008 Server x64 SP1-SP2 • Windows 10 • Windows 10 x64 • Windows 8.1 • Windows 8.1 x64 • Windows 8 • Windows 8 x64 • Windows 7 • Windows 7 x64 • Windows Vista • Windows Vista x64 	<ul style="list-style-type: none"> • .NET Framework 4.0 • Internet Explorer 7.0 to 11.0
Data Server	<ul style="list-style-type: none"> • Windows 2016 Server • Windows 2012 R2 Server • Windows 2012 Server • Windows 2008 R2 Server • Windows 2008 Server SP1-SP2 	<ul style="list-style-type: none"> • SQL Server 2008 • SQL Server 2008 R2 with Reporting Services • SQL Server 2012 with Reporting Services

	<ul style="list-style-type: none"> Windows 2008 Server x64 SP1-SP2 	<ul style="list-style-type: none"> SQL Server 2014 with Reporting Services SQL Server 2016 with Reporting Services SQL Server Tools and Workstation Components 2005, SQL Server 2008, SQL Server 2012, SQL Server 2014 Features: Client Tools Connectivity, Management Tools .NET Framework 4.0
Reports Server	<ul style="list-style-type: none"> Windows 2016 Server Windows 2012 R2 Server¹ Windows 2012 Server¹ Windows 2008 R2 Server¹ Windows 2008 Server SP1-SP2 Windows 2008 Server x64 SP1-SP2¹ 	<ul style="list-style-type: none"> .NET Framework 4.0 Reporting Services (same release as the database) Microsoft Internet Information Services 6.0 to 8.5
Site Server (OS Deployment Manager only)	<ul style="list-style-type: none"> Windows 2012 R2 Server Windows 2012 Server Windows 2008 R2 Server Windows 2008 Server SP1-SP2 Windows 2008 Server x64 SP1-SP2 <p><u>Supported, but not recommended:</u></p> <ul style="list-style-type: none"> Windows 10 Windows 10 x64 Windows 8.1 Windows 8 Windows 8 x64 Windows 7 Windows 7 x64 Windows Vista Windows Vista x64 	<ul style="list-style-type: none"> Windows Assessment and Deployment Kit (ADK) with WinPE 3.1 or later for Windows 8, 8.1, 10 Microsoft Windows Deployment Services (WDS) required only if you intend to use PXE support)

<p>Managed Device</p>	<ul style="list-style-type: none"> • Windows 2016 Server • Windows 2012 R2 Server • Windows 2012 Server • Windows 2008 R2 Server Core • Windows 2008 R2 Server • Windows 2008 Server Core • Windows 2008 Server • Windows 2008 Server Core x64 • Windows 2008 Server x64 • Windows 10 • Windows 10 x64 • Windows 8.1 • Windows 8.1 x64 • Windows 8 • Windows 8 x64 • Windows 7 • Windows 7 x64 • Windows Vista • Windows Vista x64 • RedHat Linux 8 and 9 • RedHat Enterprise Linux 3, 4, 5, 6, 6.1 • SuSE Professional/OpenSuSE 9, 10, 11 • SuSE Enterprise Server (SLES) 9, 10, 11 • Mac OS X 10.8, 10.9, 10.10 • Windows XP² • Windows XP x64² • Windows 2003 R2 Server² • Windows 2003 R2 Server x64² • Windows 2003 Server² • Windows 2003 Server x64² • Solaris 9, 10, 11 (Intel)² • Solaris 8, 9, 10, 11 (SPARC)² • CentOS 6.x, 7.x² 	<ul style="list-style-type: none"> • Internet Explorer 7.0 to 11.0 (Windows platforms only) • Java SE Runtime Environment (build 1.6.0) (Mac OS X only)
------------------------------	---	---

	<ul style="list-style-type: none"> • Fedora 21² • AIX 5.2, 5.3, 6.1, 7.1² • HP-UX 11.00, 11i, 11i v2, 11iv3² 	
<p>Snapshot Wizard</p>	<ul style="list-style-type: none"> • Windows 2016 Server • Windows 2012 R2 Server • Windows 2012 Server • Windows 2008 R2 Server • Windows 2008 Server • Windows 2008 Server x64 • Windows 10 • Windows 10 x64 • Windows 8.1 • Windows 8.1 x64 • Windows 8 • Windows 8 x64 • Windows 7 • Windows 7 x64 • Windows Vista • Windows Vista x64 	
<p>Distribution Server</p>	<ul style="list-style-type: none"> • Windows 2016 Server • Windows 2012 R2 Server • Windows 2012 Server • Windows 2008 R2 Server Core • Windows 2008 R2 Server • Windows 2008 Server Core • Windows 2008 Server • Windows 2008 Server Core x64 • Windows 2008 Server x64 <p><u>Supported, but not recommended:</u></p> <ul style="list-style-type: none"> • Windows 10 • Windows 10 x64 • Windows 8.1 • Windows 8.1 x64 	

	<ul style="list-style-type: none"> • Windows 8 • Windows 8 x64 • Windows 7 • Windows 7 x64 	
<p>Inventory</p>	<ul style="list-style-type: none"> • Windows 2016 Server • Windows 2012 R2 Server • Windows 2012 Server • Windows 2008 R2 Server Core • Windows 2008 R2 Server • Windows 2008 Server Core • Windows 2008 Server • Windows 2008 Server Core x64 • Windows 2008 Server x64 • Windows 2003 R2 Server • Windows 2003 R2 Server x64 • Windows 2003 Server SP2 • Windows 2003 Server x64 SP2 • Windows 10 • Windows 10 x64 • Windows 8.1 • Windows 8.1 x64 • Windows 8 • Windows 8 x64 • Windows 7 • Windows 7 x64 • Windows Vista • Windows Vista x64 • Windows XP Professional • Windows XP Professional x64 • Windows XP Home • RedHat Linux 8 and 9 • RedHat Enterprise Linux 6.x, 7.x • CentOS 6.x, 7.x • Fedora 21 	<ul style="list-style-type: none"> • Java SE Runtime Environment (build 1.6.0) (Mac OS X only)

	<ul style="list-style-type: none">• SuSE Professional/OpenSuSE 9, 10, 11• SuSE Enterprise Server (SLES) 9, 10, 11• Solaris 9, 10, 11 (Intel)• Solaris 8, 9, 10, 11 (SPARC)• Mac OS X 10.8, 10.9, 10.10• AIX 5.2, 5.3, 6.1, 7.1• HP-UX 11.00, 11i, 11i v2, 11i v3	
--	--	--



Warning:

Managed devices with operating systems which use OpenSSH 6.9 or higher are not supported!

¹ Requires IIS to run in 32 bit mode

² Advanced support

Compatibility

This section describes the compatibility of RayManageSoft / RayVentory 10.6 *infinity* products. If installing any components of RayManageSoft / RayVentory on the same server, the version of that component must also be 10.6 *infinity*.

Compatible Components

Versions of distribution servers and managed devices that can be managed by Deployment Manager 10.6 *infinity*:

Component	Compatible versions
Deployment Manager for distribution servers	10.x
Deployment Manager for managed devices (Windows)	10.x
Deployment Manager for managed devices (Linux)	10.x
Deployment Manager for managed devices (Solaris)	10.x
Deployment Manager for managed devices (Mac OS X)	10.x
Deployment Manager for managed devices (AIX)	10.x
Deployment Manger for managed devices (HP-UX)	10.x

Versions of distribution servers and managed devices that can be managed by OS Deployment Manager 10.6 *infinity* and Security Manager 10.6 *infinity*:

Component	Compatible versions
Deployment Manager for distribution servers	10.x
Deployment Manager for managed devices (Windows)	10.x

Upgrading from Earlier Releases

The last version before this release was 10.4; therefore, this upgrade path is regarded as the RMS/RV standard upgrade procedure. To upgrade from releases earlier than 10.4, please consult your Raynet support representative.

Please note that the system requirements have changed since the last release. Make sure to meet the system requirements during each step of the migration process to ensure a stable system status at all times.

Additional Information

Visit www.raymanagesoft.com for further information on RayManageSoft / RayVentory, and take a look at the additional resources available at the Knowledge Base: <http://knowledgebase.raymanagesoft.com>.

Raynet is looking forward to receiving your feedback from your RayManageSoft / RayVentory experience. Please contact your Raynet service partner or write an email to support@raynet.de to add your ideas or requirements to the RayManageSoft / RayVentory development roadmap!

More information on RayVentory can be found in the *Release Notes with Technical Specifications* for RayVentory.

RayManageSoft / RayVentory is part of the RaySuite

More information online
www.raynet.de



Raynet GmbH

Technologiepark 20
33100 Paderborn, Germany
T +49 5251 54009-0
F +49 5251 54009-29
info@raynet.de

www.raynet.de